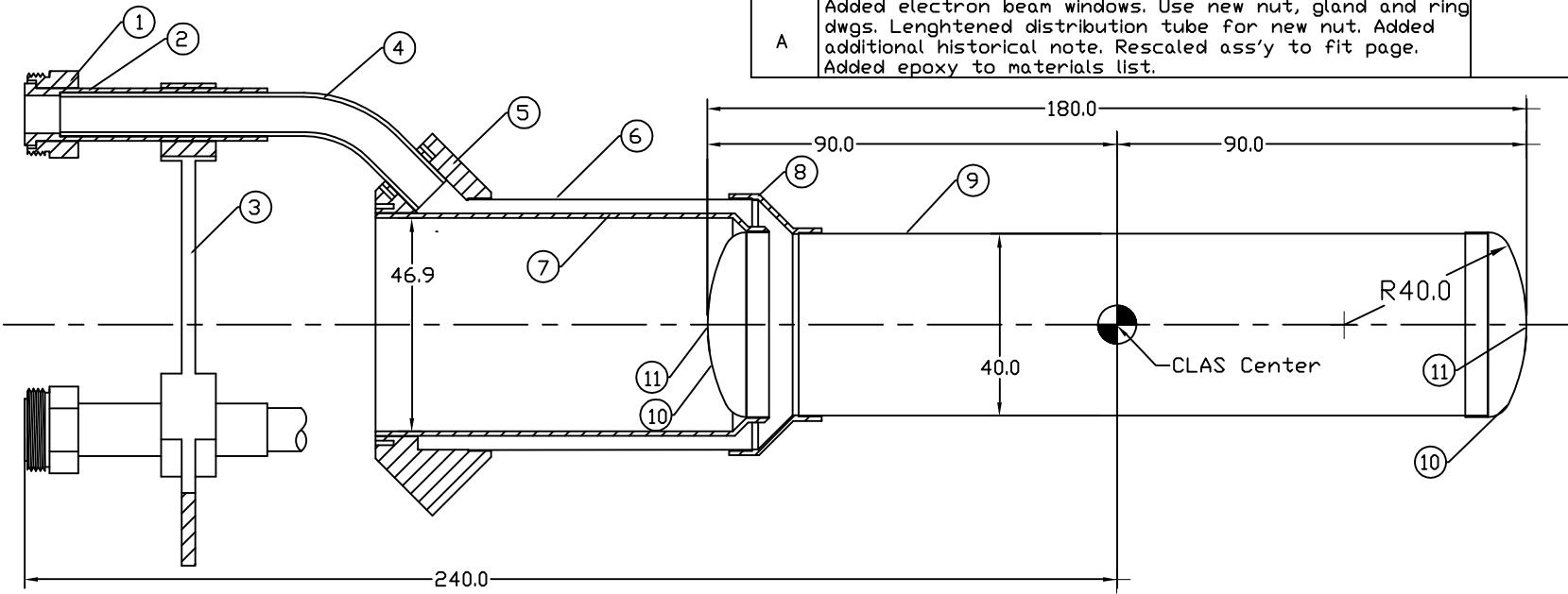


REVISIONS			
REV.	DESCRIPTION	DATE	APPROVED
A	Added electron beam windows. Use new nut, gland and ring dwgs. Lengthened distribution tube for new nut. Added additional historical note. Rescaled ass'y to fit page. Added epoxy to materials list.		

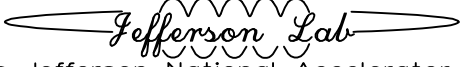


- Notes:
- 1) The G1 cell is identical to the G2 cell (66850-A-02981) except for the length of the cell wall (item 9) and the use of Kapton instead of Mylar.
 - 2) This cell will replace the original G1 cell which has no Al. windows and is no longer usable due to mechanical damage.
 - 3) Use form 66850-A-03018, s3 to form this item. Cut Kapton with 5 mm overlap on the seam and 2-3 mm longer than the form. Use mold release agent on form then wrap Kapton tightly and glue seam using DP-190. Use Mylar tape to hold seam while epoxy cures. Trim ends of Kapton to ends of form when epoxy has cured.
 - 4) Use form 66850-A-03019 to form this item. Follow procedure in note 3.

QTY REQD	ITEM NO.	PART OR IDENTIFYING NO.	NOMENCLATURE OR DESCRIPTION	MATERIAL SPECIFICATION
3	1	66850-A-03259, rev A	CONDENSER CONNECTING NUT	304 STAINLESS STEEL
3	2	66850-A-03259, rev A	GLAND	6061 T6 ALUMINUM
1	3	66850-A-03322	GAS MANIFOLD SUPPORT RING	1100 SERIES ALUMINUM
3	4	66850-A-02981 s6, rev A	DISTRIBUTION TUBE	3/8" TUBE, 6061 T6 ALUMINUM
1	5	66850-A-02981 s2	OUTER BASE RING	TORLON 4203, 1" PLATE
1	6	Note 3	OUTER BASE WALL	0.005" KAPTON
1	7	66850-A-02981 s3	INNER BASE TUBE	TORLON 4203, 2" ROD
1	8	66850-A-02981 s4	CELL WALL COLLAR	TORLON 4203, 1" PLATE
1	9	Note 4	CELL WALL	0.005" KAPTON
2	10	66850-A-02982 s1, rev B	END CAP	0.005" KAPTON
2	11	GOODFELLOW, 000392	ELECTRON BEAM WINDOW	15um Al, 99.0% x 10mm dia. Glue to inside of Item 10.
2	12	3M DP-190 GRAY	EPOXY	0.001-0.005" FILM ON ALL CONTACT SURFACES

PARTS LIST

DIM & TOL PER ANSI Y14.5 - UNLESS OTHERWISE SPECIFIED. DIMENSIONS ARE IN MM. TOLERANCES ARE: FRACTIONS DECIMAL ANGLES ± .xx ± ± ± .xxx ±	CADD I.D. NO. christo\\d:\ACAD DRAWINGS\dwg1\tar_g1_phot_elec.dwg	
	APPROVALS	DATE
MATERIAL	DRAWN s. christo	8/27/99
	CHECKED DHK	10/22/99
FINISH DEBURR & BREAK ALL SHARP EDGES	APPROVED/ORIGINATOR s. christo	10/22/99
	APPROVED DHK	10/22/99


 Thomas Jefferson National Accelerator Facility
 NEWPORT NEWS, VIRGINIA
 UNITED STATES DEPARTMENT OF ENERGY

G1 TARGET CELL
 ASSEMBLY

SIZE A	DWG. NO. 66850-A-03024	REV. A
SCALE 2:3	USED ON ASSY NO.	SHEET 1 OF 1

DO NOT SCALE DRAWING