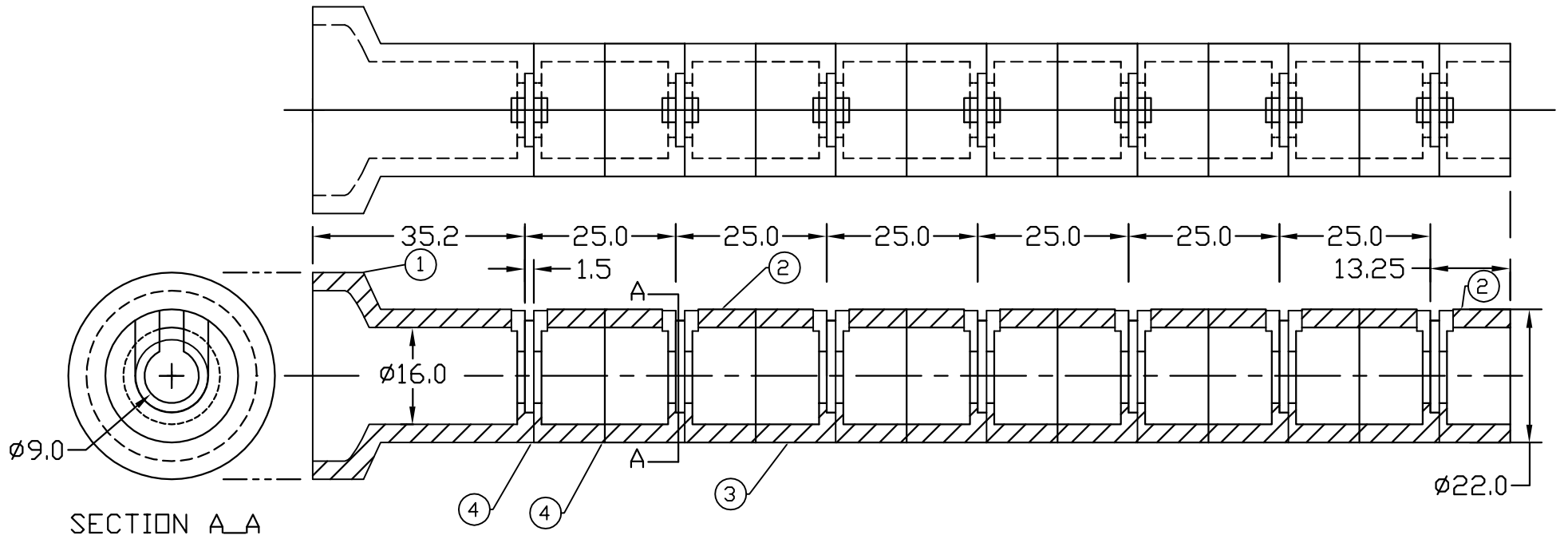


REVISIONS				
ZONE	REV.	DESCRIPTION	DATE	APPROVED



QTY REQD	ITEM NO.	PART OR IDENTIFYING NO.	NOMENCLATURE OR DESCRIPTION	NOTES/MATERIAL SPECIFICATION
1	4	3M DP-190 GRAY	EPOXY, SEE NOTE	0.001-0.002" FILM ON ALL CONTACT SURFACES
6	3	66850-A-03658	FORWARD RING	Rohacell 31 HF Foam, 1.9lb/cu.ft. Area Density=10.7mg/sq.cm.
7	2	66850-A-03657	REAR RING	
1	1	66850-A-03656	BASE	

Note:
Use Assembly Tooling listed in dwg. 66850-A-03660 to assemble the foam parts. Clean all contact surfaces with reagent alcohol. Use an ink breyer to roll out a thin film of epoxy on smooth, flat plat glass. Apply thin film of epoxy, using the breyer, to all contact surfaces. Assemble as shown in dwg 66850-A-03660.

PARTS LIST					
DIM & TOL PER ANSI Y14.5 . UNLESS OTHERWISE SPECIFIED DIMENSIONS ARE IN MM TOLERANCES ARE: FRACTIONS DECIMAL ANGLES ± .x ± ± .xx ± ±	CADD I.D. NO. christo\\d:\ACAD DRAWINGS\dwg1\tar_g7a_final.dwg		 Thomas Jefferson National Accelerator Facility NEWPORT NEWS, VIRGINIA UNITED STATES DEPARTMENT OF ENERGY g7a Solid Target Holder Sub-Assembly		
	APPROVALS	DATE			
MATERIAL	DRAWN s. christo	7/9/02	SIZE DWG. NO. REV. A 66850-A-03655 --		
FINISH DEBURR & BREAK ALL SHARP EDGES UNLESS OTHERWISE NOTED	CHECKED DKH	7/24/02			
DO NOT SCALE DRAWING	APPROVED/ORIGINATOR s. christo	7/24/02			
	APPROVED DKH	7/24/02	SCALE 1:1	USED ON ASSY NO. 66850-A-03648	SHEET 1 OF 1