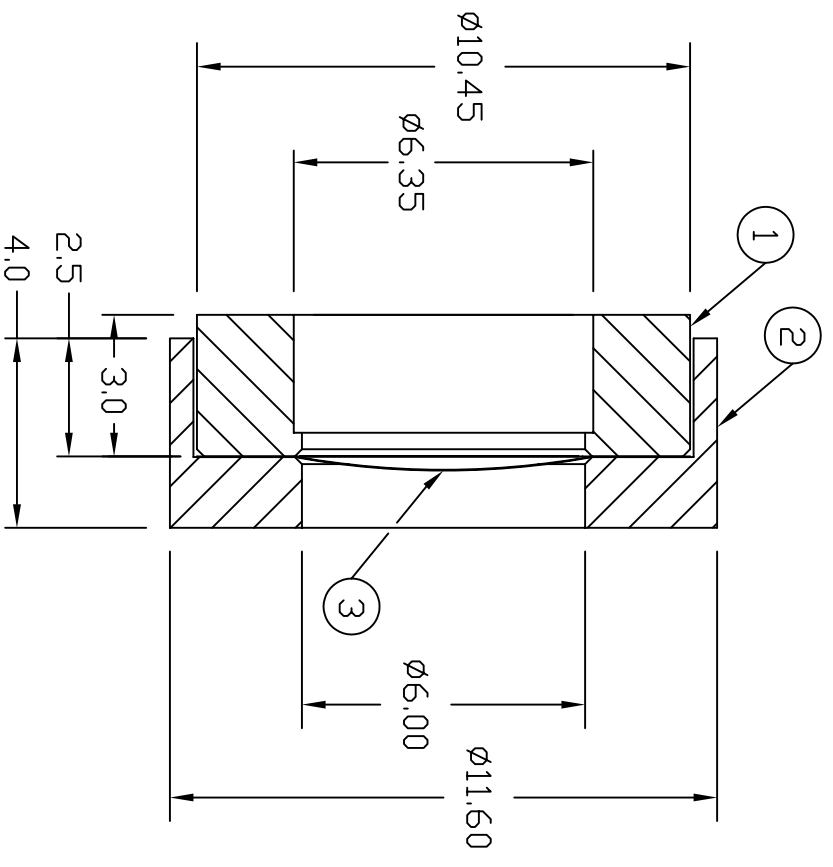


REVISIONS		DATE	APPROVED
ZONE	REV.	DESCRIPTION	

- NOTE:  
 PRE-FORM WINDOW USING THE FOLLOWING PROCEDURE:
- A) PLACE WINDOW MATERIAL ON A SMOOTH FLAT PIECE OF SOFT LEAD AT LEAST 1/8" THICK.
  - B) CENTER A 7/8" DIA. BALL BEARING OVER THE WINDOW MATERIAL.
  - C) STRIKE THE BALL WITH A HAMMER TO DISH A 5-6 MM DIA. SECTION OF THE WINDOW MATERIAL.
  - D) TRIM THE WINDOW MATERIAL TO 13.5 MM DIA., KEEPING THE DISHED SECTION CENTERED.
  - E) MAKE RADIAL CUTS AROUND THE PERIMETER FROM THE OUTSIDE EDGE TO A RADIUS OF 5.2 MM FROM THE CENTER. MAKE THE CUTS EVERY 1/2 TO 1 MM AROUND THE EDGE.



1	3	GOODFELLOW, LS 278210/1	EXIT WINDOW		
1	2	66850-A-04394	CAP RING		
1	1	66850-A-04393	CAP BASE		

DIM & TOL PER ANSI Y14.5. UNLESS OTHERWISE SPECIFIED, DIMENSIONS ARE IN MM TOLERANCES ARE: FRACTIONS    DECIMAL    ANGLES ±            ±            ± .xx        ± .05        ±		CADD I.D. NO. christo\c:\ACAD DRAWINGS\dwg1\ tar_bonus_final.dwg		NOMENCLATURE OR DESCRIPTION	
MATERIAL _____		APPROVALS		DATE	
FINISH    125    UNLESS OTHERWISE NOTED		DRAWN s. christo		10/20/05	
DEBURR & BREAK ALL SHARP EDGES		CHECKED		APPROVED/ORIGINATOR	
DO NOT SCALE DRAWING		APPROVED		APPROVED	

Thomas Jefferson National Accelerator Facility  
 UNITED STATES DEPARTMENT OF ENERGY

*Jefferson Lab*

CLAS, BONUS 6 mm DIA. TARGET  
 BACKUP 15 UM X 6 MM STRONGER  
 EXIT WINDOW ASSEMBLY

SCALE 6:1    USED ON ASSY NO. 66850-C-04391    SHEET 1 OF 1

SIZE DWG. NO. 66850-A-04392    REV. \_\_\_