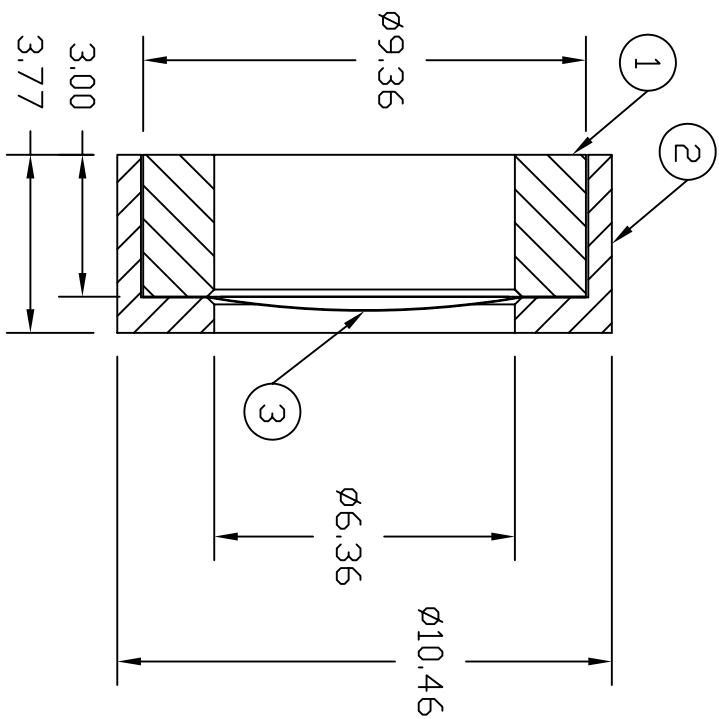


REVOLUTIONS		DESCRIPTION	DATE	APPROVED
ZONE	REV.			



NOTE:  
 PRE-FORM WINDOW USING THE FOLLOWING PROCEDURE:  
 A) PLACE WINDOW ON A SMOOTH FLAT PIECE OF SOFT LEAD AT LEAST 1/8" THICK.  
 B) CENTER A 1" DIA. BALL BEARING OVER THE WINDOW.  
 C) STRIKE THE BALL WITH A HAMMER USING ENOUGH FORCE TO DISH THE ENTIRE WINDOW.

QTY	ITEM	PART OR IDENTIFYING NO.	NOMENCLATURE OR DESCRIPTION	NOTES/MATERIAL SPECIFICATION
1	3	GOODFELLOW, LS 278210/1	EXIT WINDOW	15 um ALUMINUM ALLOY 2014 (Al 95, Cu 4, Mg 1) CUT 11/32" DIA. GLUE WITH 3M DP-190. SEE NOTE.
1	2	66850-A-04390	CAP RING	
1	1	66850-A-04389	CAP BASE	

DIM & TOL PER ANSI Y14.5. UNLESS OTHERWISE SPECIFIED DIMENSIONS ARE IN MM. TOLERANCES ARE: FRACTIONS DECIMAL ANGLES .xx ± .05 ±		CADD I.D. NO. christo \\c:\ACAD DRAWINGS\dwg1\tor_bonus_find.dwg	
MATERIAL _____		APPROVALS DATE	
FINISH 125 UNLESS OTHERWISE NOTED		DRAWN s. christo 9/19/05	
DEBURR & BREAK ALL SHARP EDGES		CHECKED	
DO NOT SCALE DRAWING		APPROVED/ORIGINATOR	
APPROVED		DATE	
SCALE 6:1		USED ON ASSY NO. 66850-C-04367, REV. A	
SHEET 1 OF 1		REV.	

Thomas Jefferson National Accelerator Facility  
 UNITED STATES DEPARTMENT OF ENERGY  
*Jefferson Lab*  
 CLAS, BONUS 6 mm DIA. TARGET  
 15 um X 6.35 MM  
 EXIT WINDOW ASSEMBLY