

SANE

Spin Asymmetries on the Nucleon Experiment (TJNAF E07-003)

SANE Collaboration

U. Basel, C. Newport U., Florida International U.,
Hampton U., Norfolk S. U., North Carolina A&T S. U.,
Ohio U., IHEP-Protvino, U. of Regina, Rensselaer Polytechnic I.,
Rutgers U., Seoul National U., Temple U., TJNAF, U. of Virginia,
College of William & Mary, U. of the Witwatersrand, Yerevan Physics I.

Spokespersons: S. Choi (Seoul), Z-E. Meziani (Temple), O. A. Rondon (U. of Virginia)

Readiness Review
July 2, 2007
Jefferson Lab

SANE Installation and Run Plans

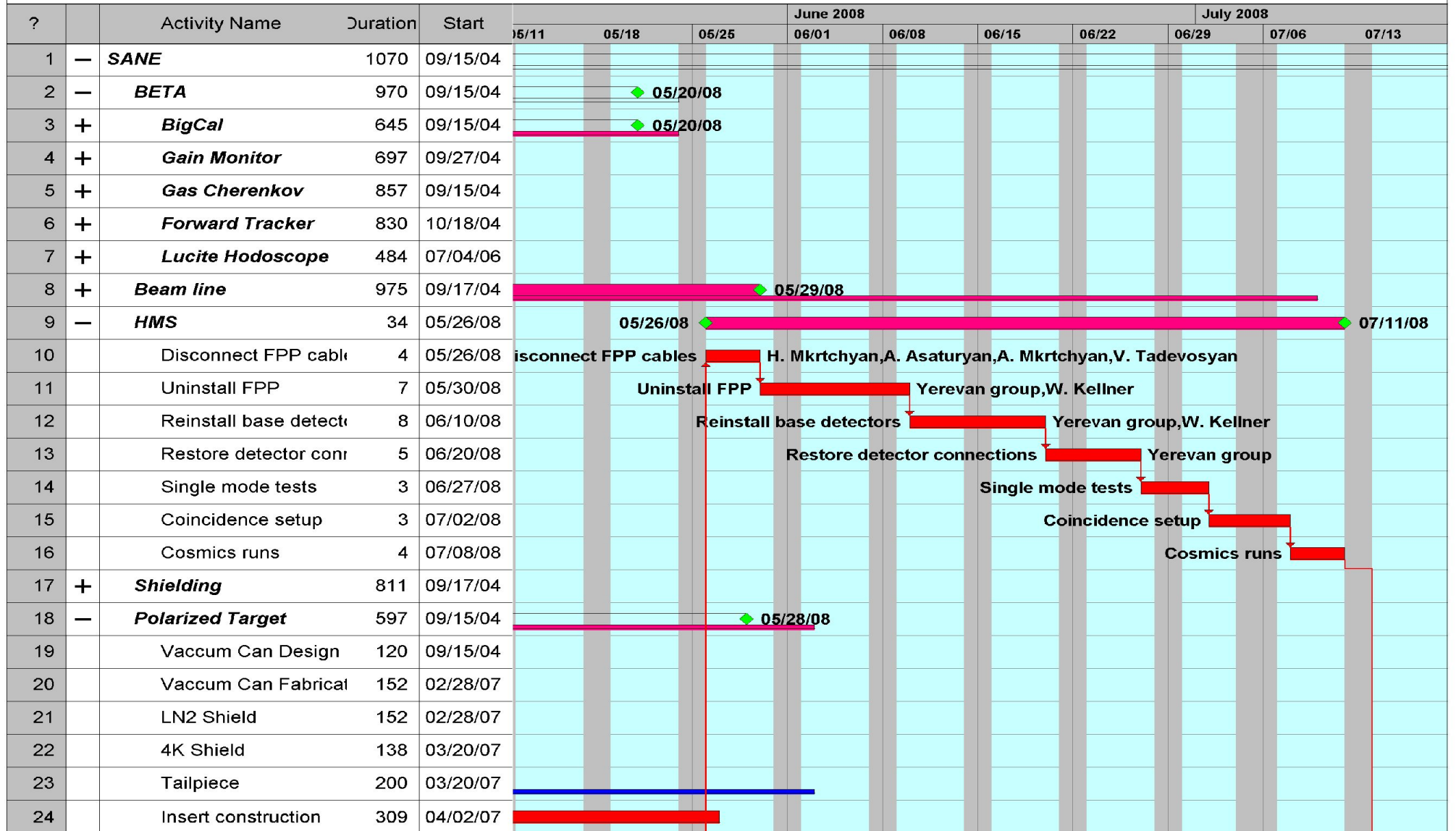
- Timeline for HMS reconditioning for SANE and general installation tasks
- Overall SANE timeline
- Run Plan
- Assumed dates and durations:
 - Installation starts on May 19, 2008
 - Run begins on July 14, 2008
 - Run ends on Sep. 22, 2008
 - Holidays: July 4th., Sep. 1st. (Labor day)
 - No survey crew, no Hall or Target group technicians on weekends
 - Target in hall: 6 weeks, four Target group personnel

HMS reconditioning and SANE installation

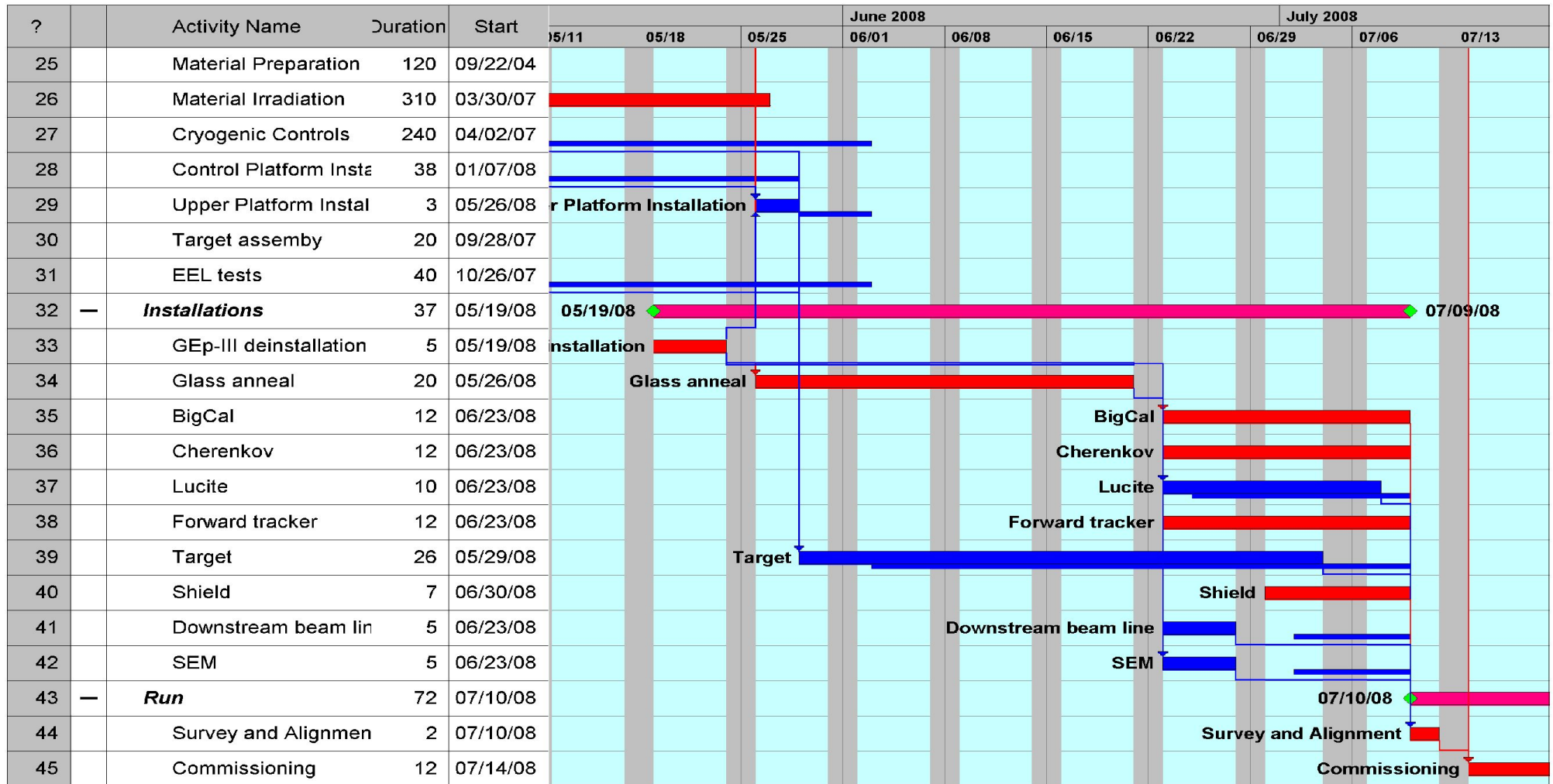
Start: 09/15/04
Finish: 09/23/08

SANE

Page #1



HMS reconditioning and SANE installation (II)



Project Start Finish Critical Activity Name Resource Names Event Start Name
 Subproject Start Finish Non Crit. Activity Name Resource Names

Filtered by <None> and Sorted by <None>

SANE Time Lines (1/3)

Start: 09/15/04
Finish: 09/23/08

Shielding

Page #1

?		Activity Name	Duration	Start	2007				2008				2009				2010				
					pr	Jul	Oct	Jan	Apr	Jul	Oct	Jan	Apr	Jul	Oct	Jan	Apr	Jul	Oct	Jan	
1	—	SANE	1070	09/15/04																	09/22/08
2	—	BETA	970	09/15/04																	05/20/08
3	—	BigCal	645	09/15/04																	05/20/08
4		BigCal assembly	21	09/15/04																	
5		BigCal tests	149	10/14/04																	
6		Gep-III	248	06/20/07																	
7	—	Gain Monitor	697	09/27/04																	05/29/07
8		Design and parts p	60	09/27/04																	
9		EEL tests	30	05/08/06																	
10		BigCal integration	247	06/19/06																	
11	—	Gas Cherenkov	857	09/15/04																	12/21/07
12		Prototype tests	78	09/15/04																	
13		Mechanical/optical	109	11/01/04																	
14		Parts procurement	120	04/01/05																	
15		Tank construction	76	11/10/06																	
16		Assembly	60	02/26/07																	
17		EEL tests	30	05/21/07																	
18		In-hall tests	85	08/27/07																	
19	—	Forward Tracker	830	10/18/04																	12/19/07
20		Lucite tests	60	10/18/04																	
21		Quartz procuremen	40	11/01/04																	
22		Quartz tests	60	02/20/06																	
23		Fibers on scintillato	0	08/07/06																	
24		Final design & Part	280	08/07/06																	

Project
Subproject

Start Finish
Start Finish

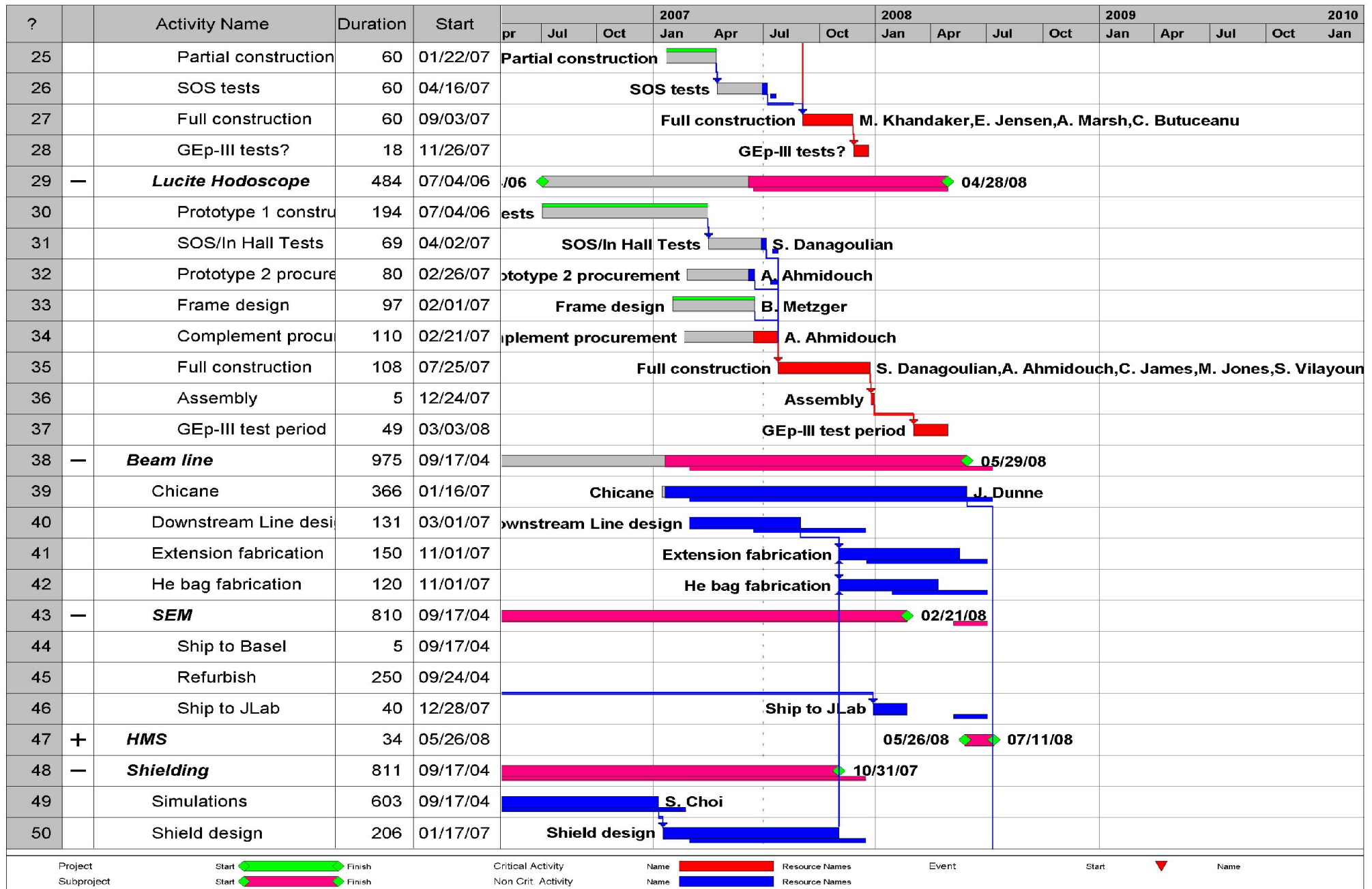
Critical Activity
Non Crit. Activity

Name Resource Names
Name Resource Names


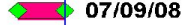




Event

Start Name

SANE Time Lines (2/3)



SANE Time Lines (3/3)

?		Activity Name	Duration	Start	2007				2008				2009				2010	
					pr	Jul	Oct	Jan	Apr	Jul	Oct	Jan	Apr	Jul	Oct	Jan	Apr	Jul
51	+	Polarized Target	597	09/15/04													05/28/08	
52	+	Installations	37	05/19/08										05/19/08		07/09/08		
53	-	Run	72	07/10/08										07/10/08		09/22/08		
54		Survey and Alignment	2	07/10/08														
55		Commissioning	12	07/14/08														
56		Run	58	07/26/08														

Project Start  Finish Critical Activity Name  Resource Names Event Start  Name
 Subproject Start  Finish Non Crit. Activity Name  Resource Names

Filtered by <None> and Sorted by <None>

Preliminary Run Plan

Start: 07/14/08
Finish: 09/23/08

SANE Run

Page #1

?	Activity Name	Duration	Start	Finish	08	July 08						August 08				September 08			
					8	15	22	29	6	13	20	27	3	10	17	24	31	7	14
1	— SANE Run	70	07/14/08	09/22/08						07/14/08							09/22		
2	Commission 2.47GeV/ (4.87?)	12	07/14/08	07/25/08						Commission 2.47GeV/ (4.87?)									
3	Calibration 2.47 GeV	6	07/26/08	07/31/08						Calibration 2.47 GeV									
4	Energy change 2 => 4 pass	1	08/01/08	08/01/08						Energy change 2 => 4 pass									
5	4.87 GeV parallel	5	08/02/08	08/06/08						4.87 GeV parallel									
6	Target rotation 180° - 80°	1	08/07/08	08/07/08						Target rotation 180° - 80°									
7	Chicane alignment	0	08/07/08	08/07/08						08/07/08 ▼ Chicane alignme									
8	4.87 GeV 80 deg.	10	08/08/08	08/17/08						4.87 GeV 80 deg.									
9	Energy change 4 pass => 5 pass	1	08/18/08	08/18/08						Energy change 4 pass => 5 pass									
10	? Chicane alignment (if needed)	0	08/18/08	08/18/08						08/18/08 ▼ ? Chicane align									
11	6.07 GeV 80 deg.	22	08/19/08	09/10/08						6.07 GeV 80 deg.									
12	Target rotation 80° - 180°	1	09/11/08	09/11/08						Target rotation 80° - 180°									
13	Chicane alignment	0	09/12/08	09/12/08						09/12/08 ▼ Chicane alignm									
14	6.07 GeV parallel	11	09/12/08	09/22/08						6.07 GeV parallel									

Project Start Finish
 Subproject Start Finish
 Critical Activity Name Resource Names Event Start Name
 Non Crit. Activity Name Resource Names

