

Procedure to mix conducting epoxy and load syringes

GlueX-doc: 1622 v2
Modified: 14 Oct. 2010

General Procedures: The 920-H conducting epoxy is mixed in the clean room. Standard clean-room procedures are followed during the procedure. If fumes are a problem, the mixing can be done in the clean-room fume hood.

Training Procedure: New personnel will watch a trained person mix the glue and load the syringe. They will then carry out the procedure twice under supervision. Given the small number of people in the clean room, no written records of this training are maintained.

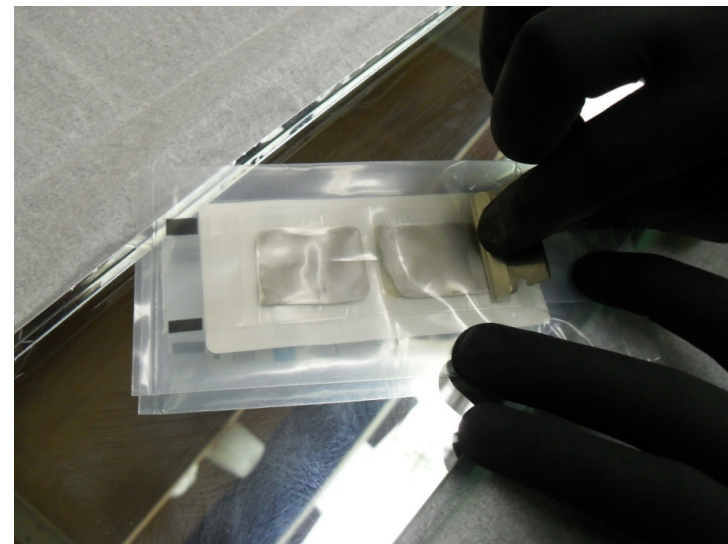
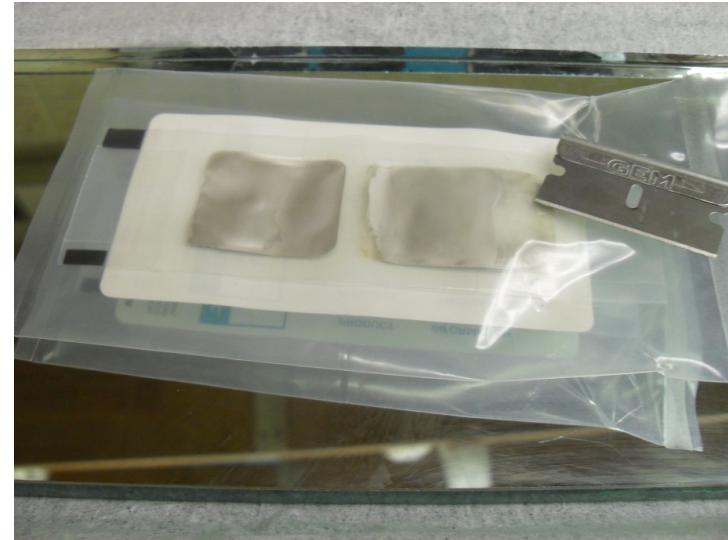
Caution: The 920-H 10-gram bipacks cost about \$40 each. Care should be exercised to avoid waste.

Safety Procedures: None

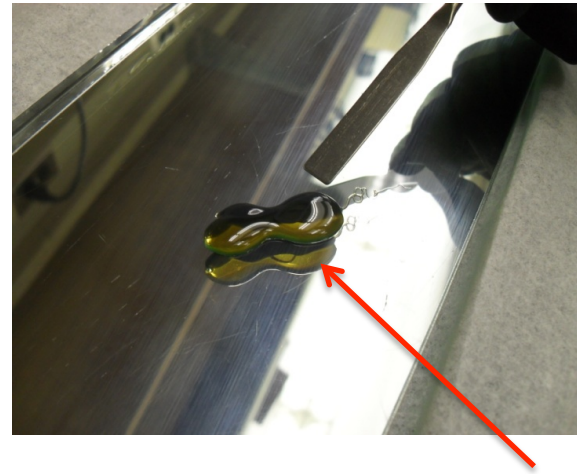
Q&A Procedures: None

Data Recorded: Data are recorded in the glue log.

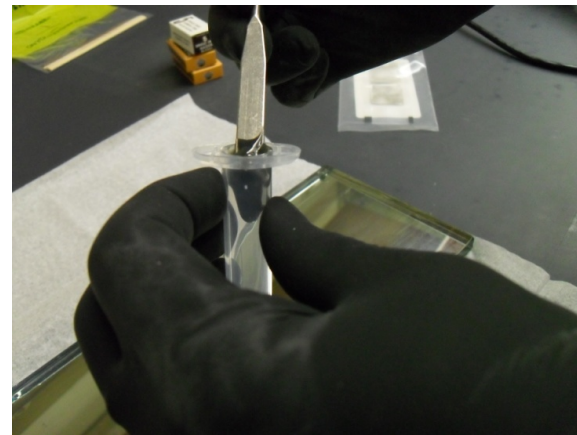
- Check the expiration date on the 920-H glue packet. Expired packets should be noted, but packets which are less than 3 months past expiration can be used.
- Take packet of glue and press glue to center of packet with razor blade to mix the two constituents.
- The two glue components can now be forced together across the boundary in the bipack and mixed by rubbing the back of the razor blade along the packet.
- Mixing should continue until the two components are thoroughly mixed.
- A cut is made in one corner of the pack, and the epoxy is squeezed into the syringe taking care to avoid losses.



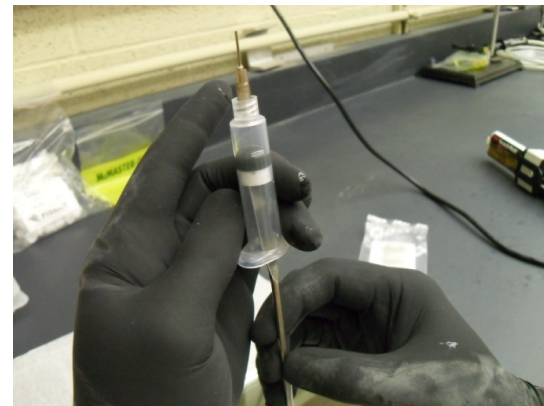
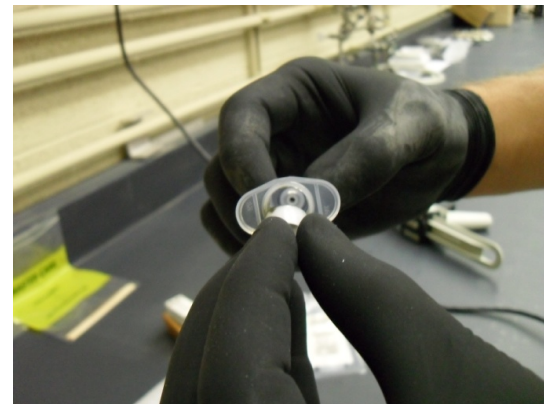
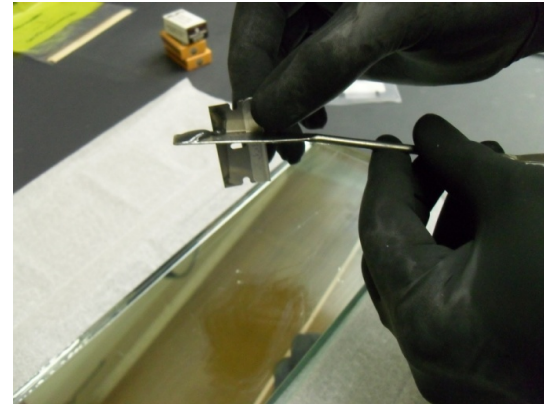
- To avoid wasting the epoxy still in the packet, we now collect it on a clean mirror surface.
- Slice off outside edge of packet and use razor blade to scrape out all remaining epoxy onto the glass.
- Using the spatula, scoop as much of this epoxy as possible into the syringe



Note: not conducting epoxy.



- Use the razor blade to scrape glass clean and get all of the epoxy in the syringe
- Wipe spatula off on the syringe piston
- Insert piston, trying to keep glue off of the back of the syringe
- Point needle up and use pencil to slowly push the piston up, evacuating the air



- Clean rear of the syringe of epoxy residue so it doesn't get on the pneumatic dispenser
- Clean spatula, razor, and glass
- Affix syringe to pneumatic dispenser and start gluing

