

**NOTES:**

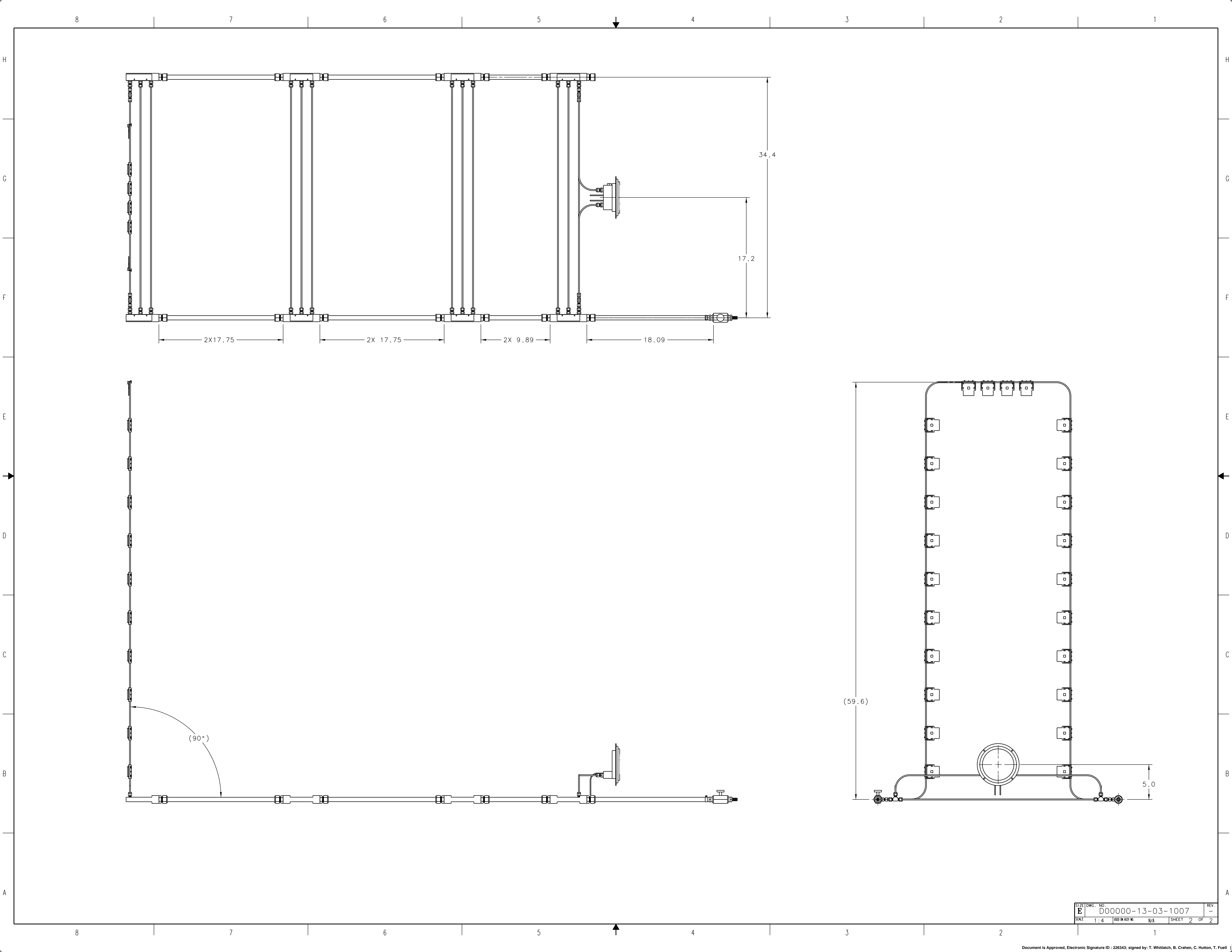
- SUGGESTED SOURCE OR JLAB APPROVED ALTERNATE:  

MCMaster-CARR	WWW.MCMaster.COM	(630) 833-0300
MIDWEST	WWW.MIDWESTINSTRUMENT.COM	(586) 254-6500
DIBERT CO	WWW.SWAGELOK.COM	(804) 275-7871
PIEDMONTPLASTICS	WWW.PIEDMONTPLASTICS.COM	(804) 271-7919
- THIS IS AN PRESSURE SYSTEM THAT RECONFIGURES SIMILAR PARTS.  
 SYSTEM ID: PS-PHY-12-001

QTY	ITEM NO.	PART OR IDENTIFYING NO.	DESCRIPTION OR IDENTIFYING NO.	MATERIAL SPECIFICATION	NOTES
2	15		PLUG 4MM OD	COPPER	
1	14	MCMaster-CARR 538K17	HOSE CLAMP-5/8 OD	301 STAINLESS STL	1
9 FT	13	TYGON TYGOTHANE C544-A-1B	TUBE 5/8 OD X 3/8 ID X 70 FT	POLYURETHANE	1
2	12	SWAGELOK B-4M0-1-4	TUBE FITTING-MALE CONNECTOR 4MM TUBE OD X 1/4 MALE NPT	BRASS	1
14	11	SWAGELOK B-1015-6	TUBE INSERT 5/8 OD X 3/8 ID	BRASS	1
1	10	MIDWAST 120-AC-10-D-AE	PISTON TYPE DIFFERENTIAL PRESSURE GAUGE	ALUMINUM/STAINLESS STL	1
2	9	MCMaster-CARR 534K19	BARBED HOSE FITTING 3/8 NPT MALE	BRASS	1
1	8	MCMaster-CARR 4995K15	NEEDLE VALVE 3/8 NPT FEMALE	BRASS	1
1	7	D00000-13-03-2022-02	GAUGE TUBING		
1	6	D00000-13-03-2022-01	GAUGE TUBING		
10	5	D00000-13-03-2021	TUBE-4MM OD NON TAPPED		
1	4	D00000-13-03-1010	TUBE ASSY-TAPPED		
1	3	D00000-13-03-1008	TUBE ASSY-2.79 MM LOOP		
2	2	D00000-01-03-1041	FDC COOLING END MANIFOLD ASSY		
6	1	D00000-01-03-1037	FDC COOLING MANIFOLD1 ASSY		

DOCUMENT CONTROL STAMP		TRACKING NO.		APPROVALS		DATE	
MATERIAL: SEE PARTS LIST		N/A		R. CEIZ		3/14/13	
FINISH: MACHINED SURFACES DEBURR & BREAK ALL SHARP EDGES		THIRD ANGLE PROJECTION		C. HUTTON			
UNLESS OTHERWISE NOTED		DO NOT SCALE DRAWING		I. WHITLATCH			

UNITED STATES DEPARTMENT OF ENERGY  
**Jefferson Lab**  
 CEBAF Accelerator National Accelerator Facility Newport News Virginia  
 HALL D - GLUEX TEST SETUP  
 FOWARED DRIFT CHAMBER  
 MANIFOLD FLOW MODEL ASSEMBLY  
 DRAWING NO. D00000-13-03-1007  
 SCALE 1:4  
 SHEET 1 OF 2



SIZE	DWG. NO.	REV.
E	D00000-13-03-1007	-
SCALE	ISSD OR ASST NO.	SHEET
1:4	N/A	2 OF 2