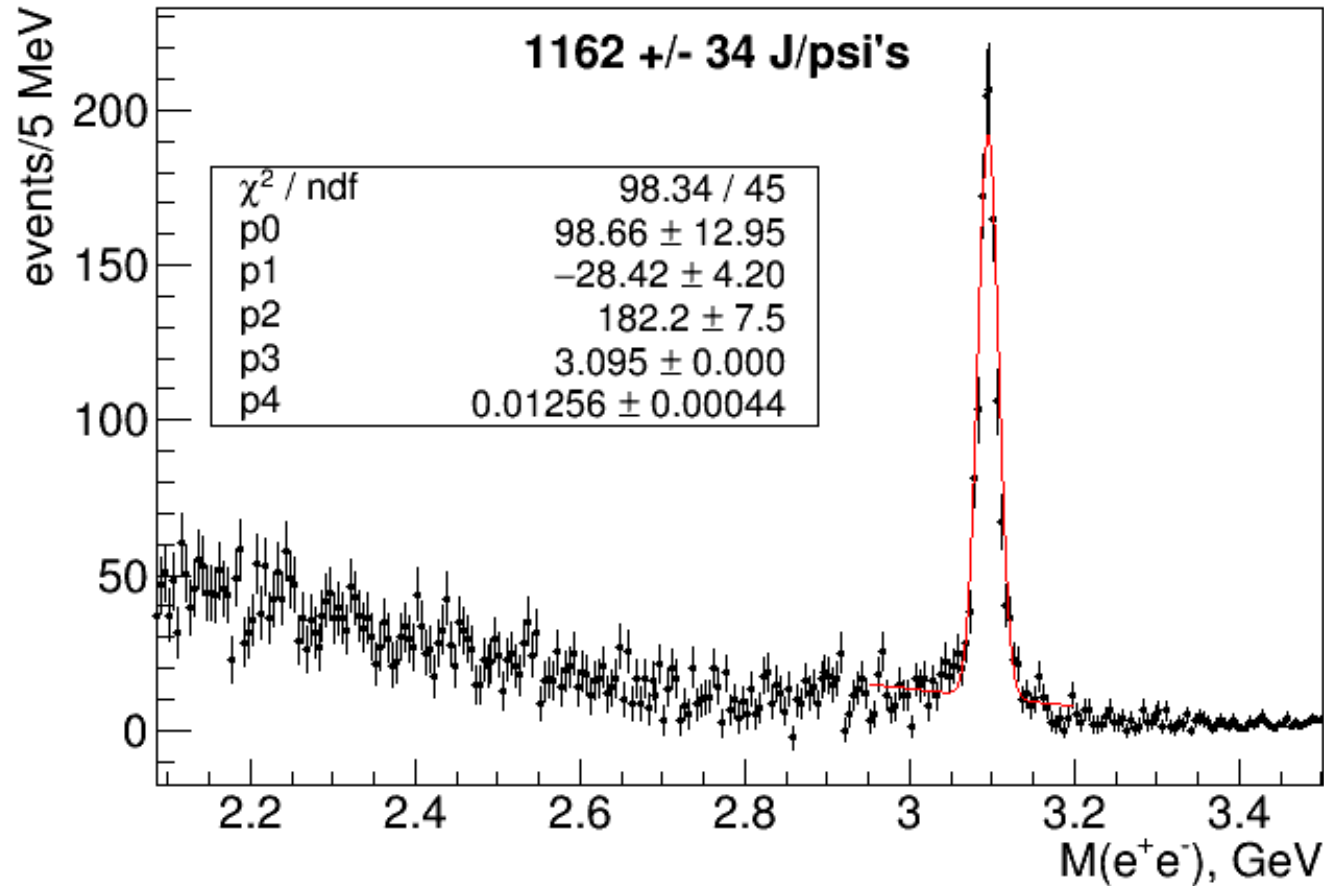


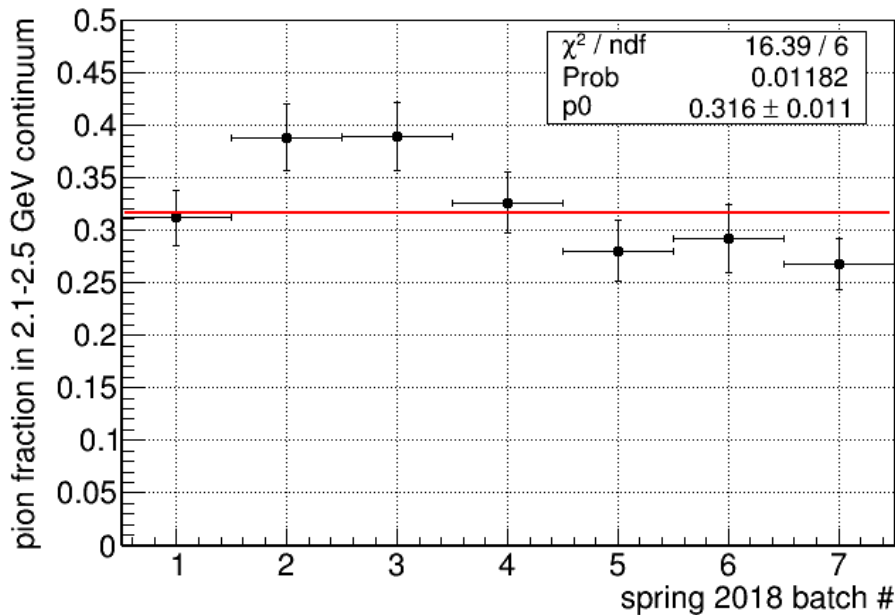
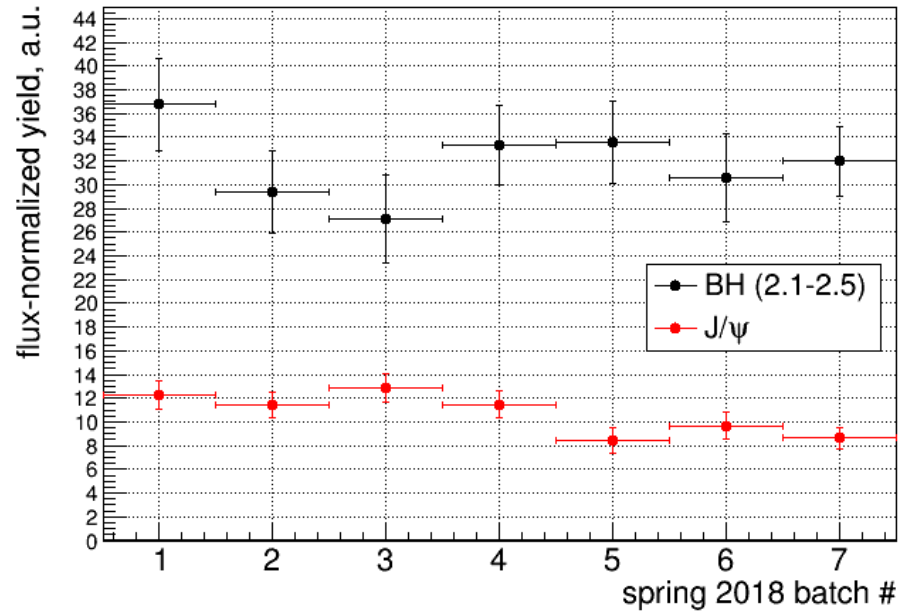
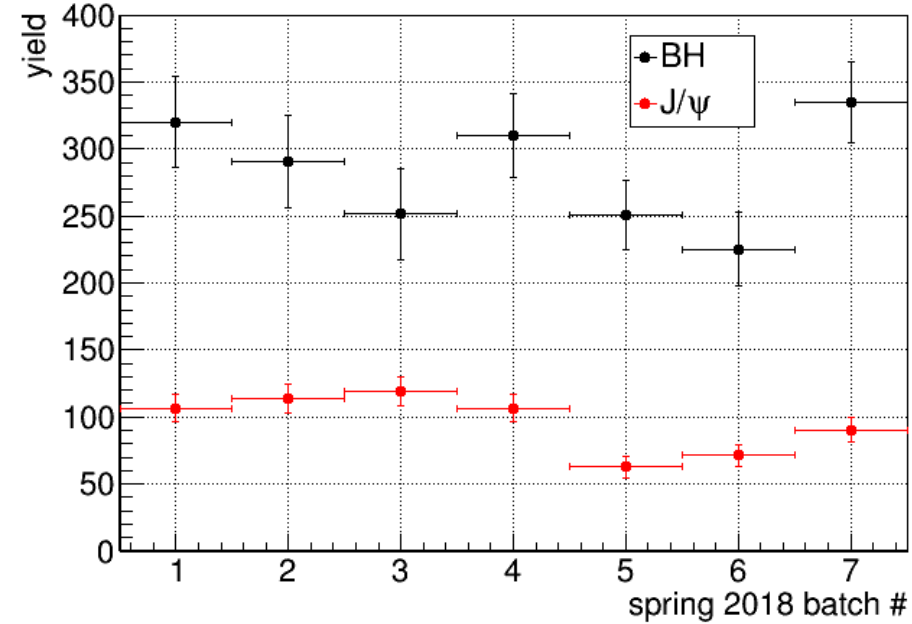
# First look at spring 2018 data



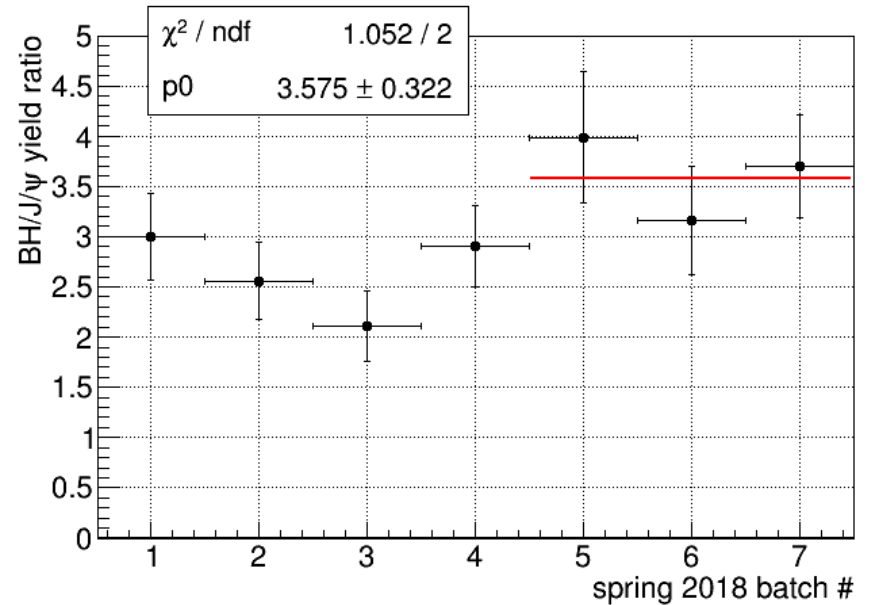
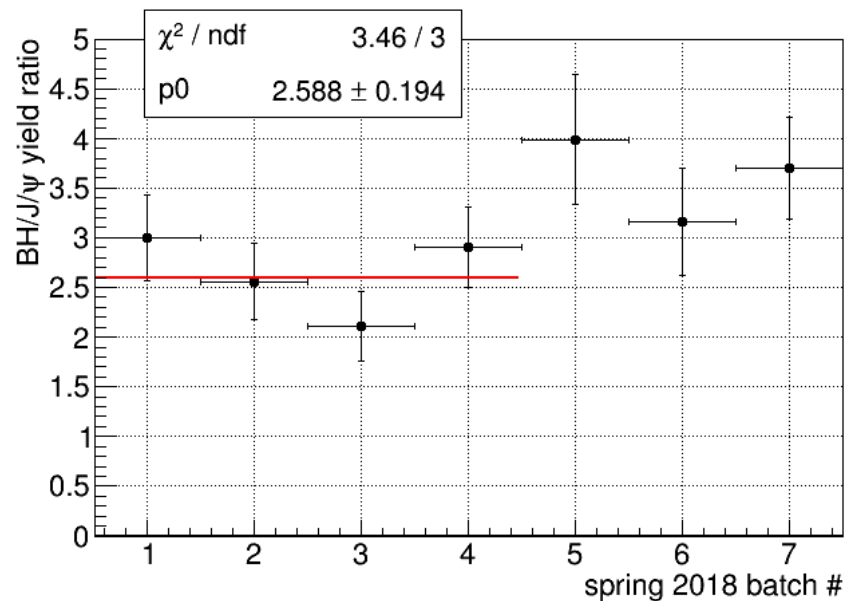
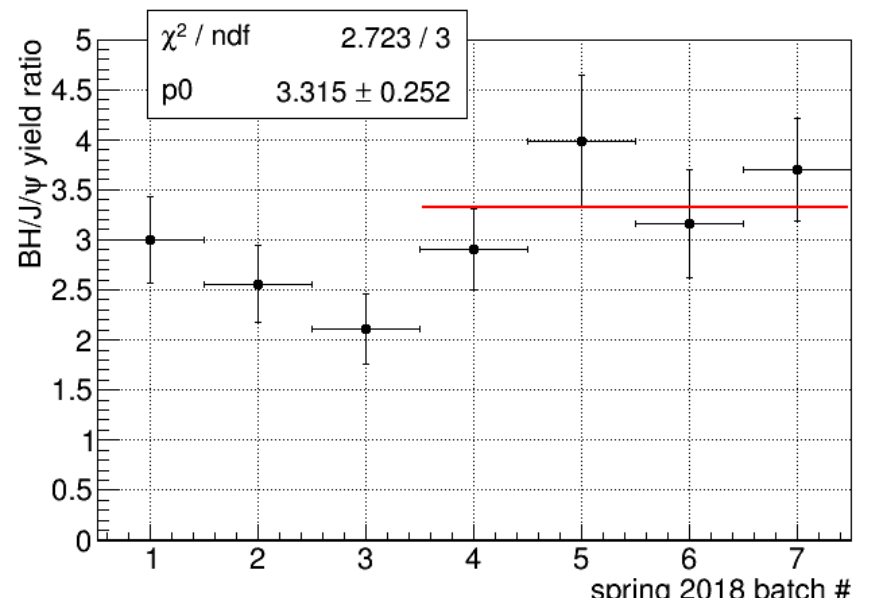
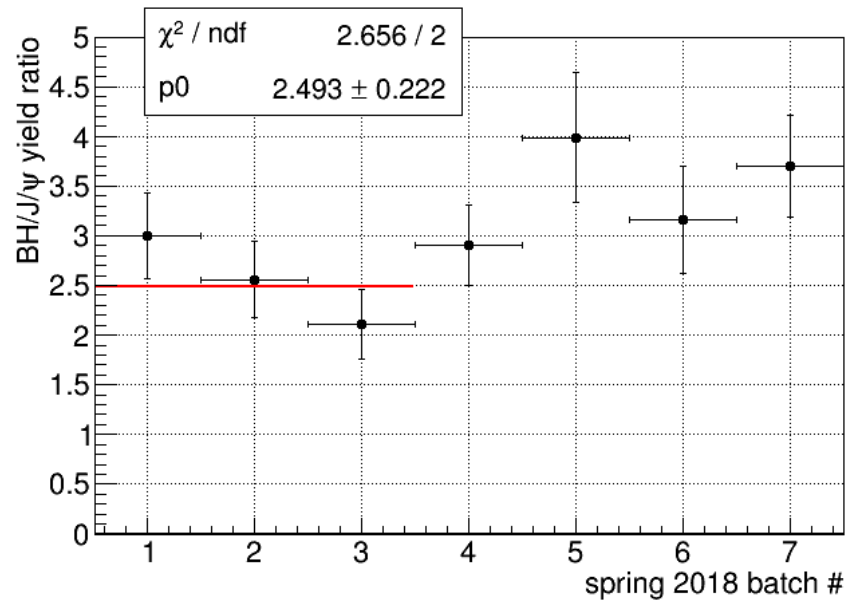
All data so far: 2016+2017+spring 2018 ( $M > 2.1$  GeV, tight cuts.)

Batch 7 -> 91 +/- 9.5 (tight) vs 110 +/- 11 (loose)

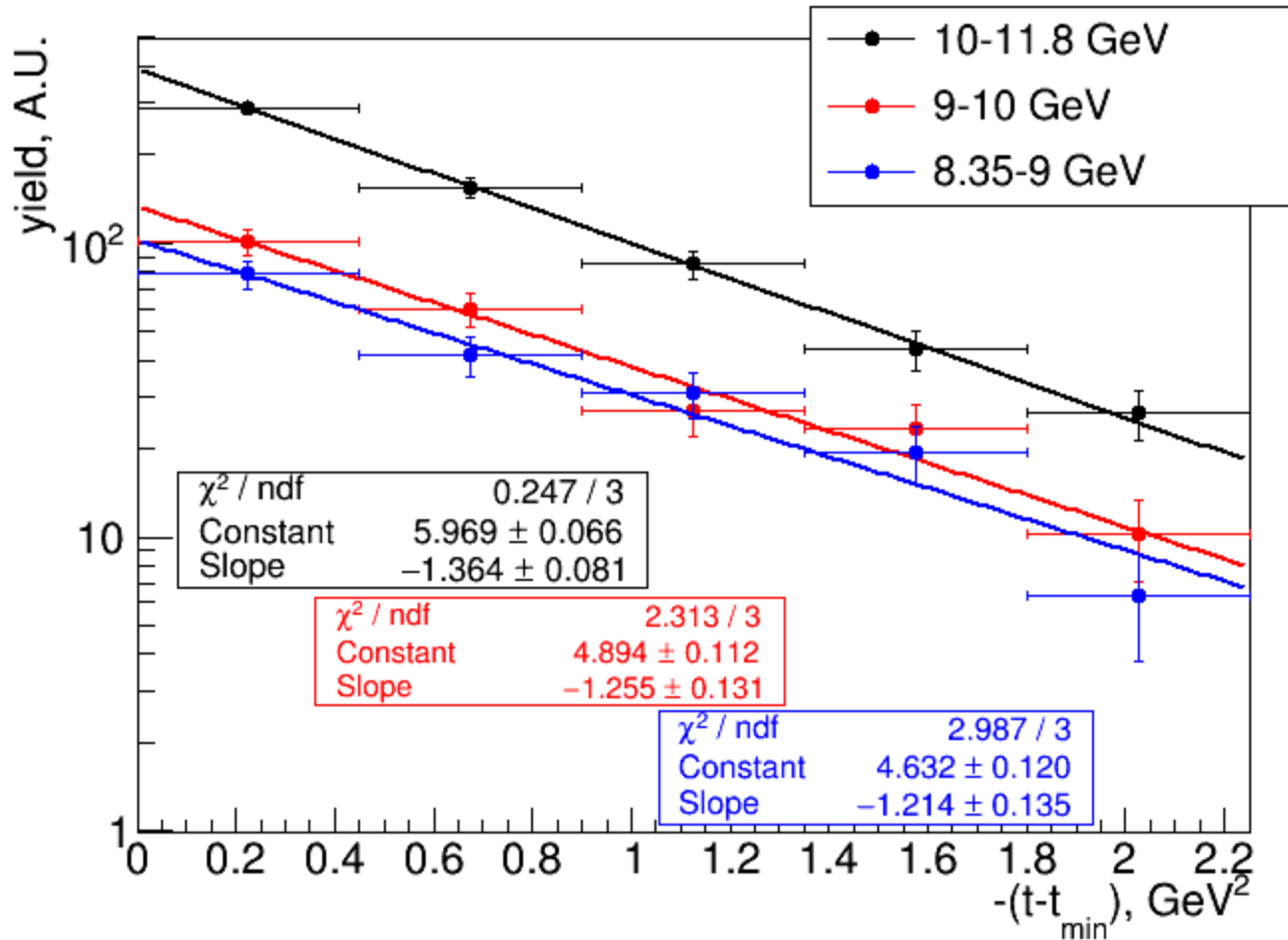
# First look at spring 2018 data: yields



# First look at spring 2018 data: yield ratios



# First look at spring 2018 data: t-slope



# First look at spring 2018 data: x-sec.

