

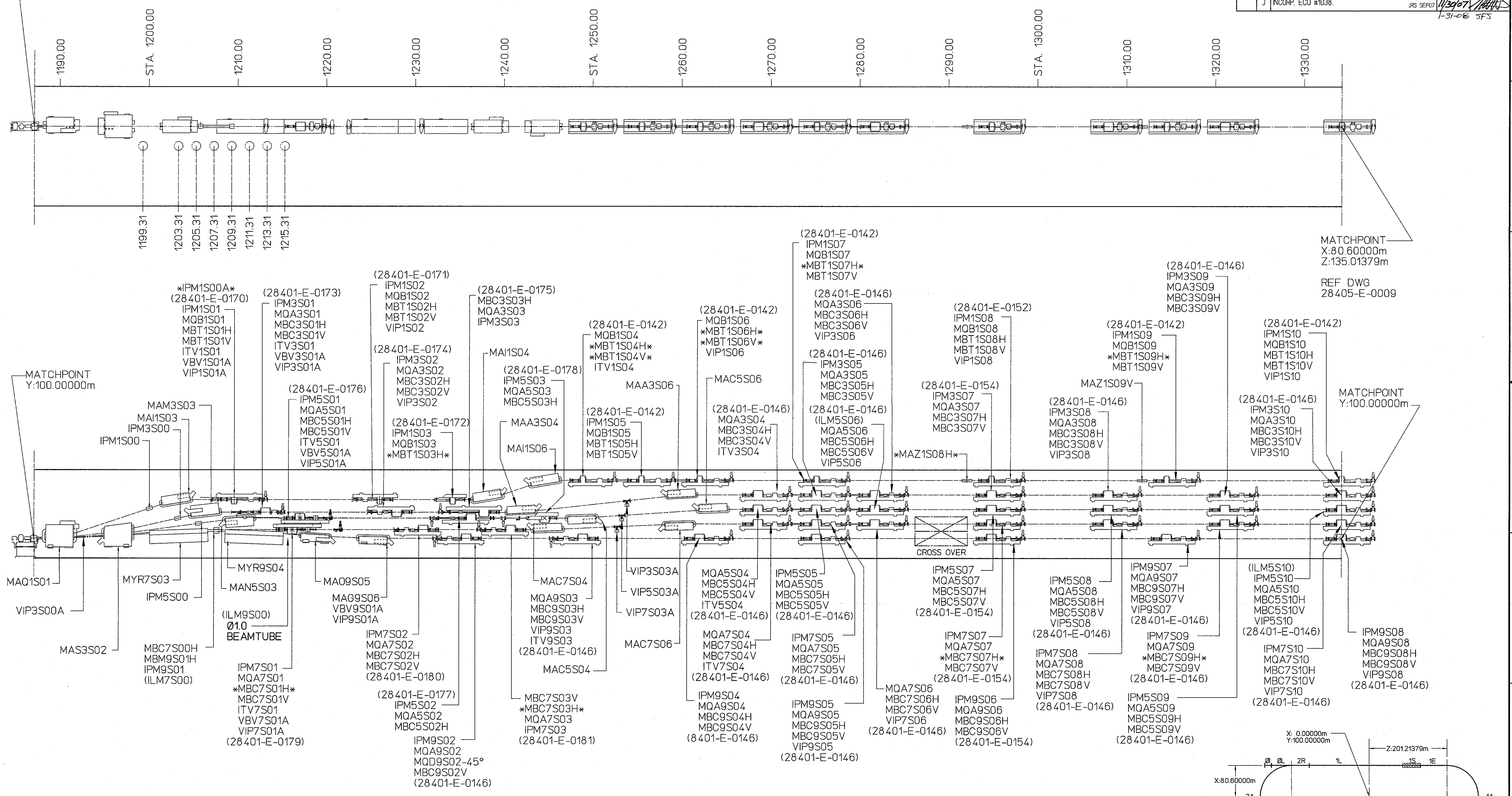
REVISIONS				
ZONE	REV.	DESCRIPTION	DATE	APPROVED
-	OR 95-006			BELOW
A	INCORP. ECO #28405-0274.	JRS 1/97	02/12/97 02/12/97	W.OREN S.SUHRING
B	INCORP. ECO #28405-0276.	JRS 7/97	30 JUL 97 06 AUG 97	W.OREN S.SUHRING
C	INCORP. ECO #28405-0277.	JRS JAN98	02/12/98 02/14/98	W.OREN S.SUHRING
D	INCORP. ECO #1021.	JRS JUL02	09 AUG 02 09 AUG 02	W.OREN S.SUHRING
E	INCORP. ECO #1030.	JRS MAR03	27 MAR 03 28 MAR 03	W.OREN S.F.S.
F	INCORP. ECO #1031.	JRS OCT03	18 DEC 03 18 DEC 03	W.OREN S.SUHRING
G	INCORP. ECO #1034.	JRS FEB05	14 NOV 05 07 DEC 05	T. Whittich S.SUHRING
H	INCORP. ECO #1036.	JRS SEP06	09 JAN 07 10 JAN 07	T. Whittich S.SUHRING
J	INCORP. ECO #1038.	JRS SEP07	11/30/07	W.OREN S.SUHRING

MATCHPOINT
X:80.60000m
Z:90.17887m

REF DWG
28405-E-0007

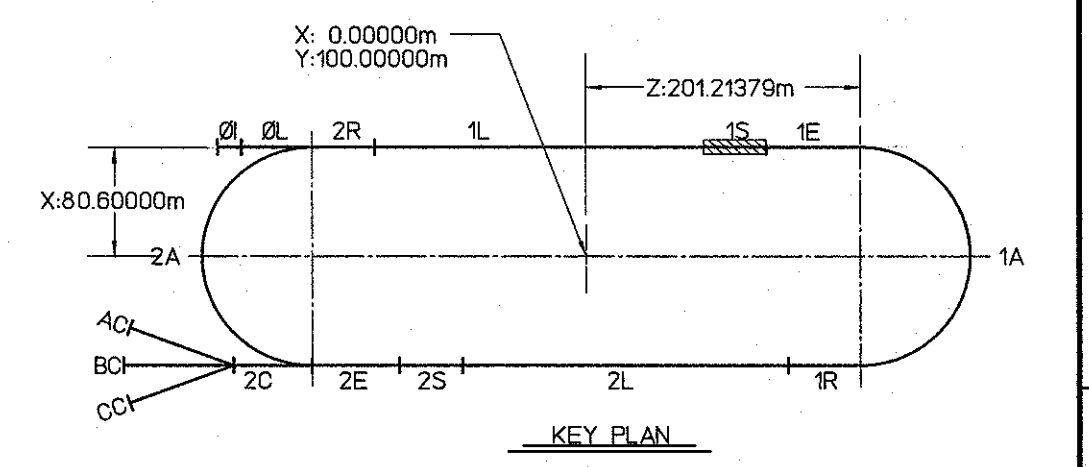
MATCHPOINT
X:80.60000m
Z:135.01379m

REF DWG
28405-E-0009



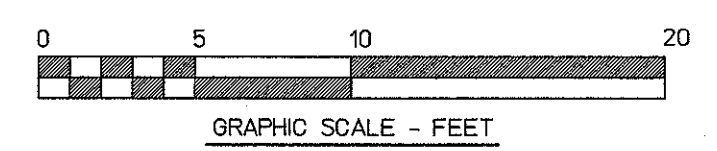
MATCHPOINT
Y:100.00000m

MATCHPOINT
Y:100.00000m



LEGEND
(Indicating Lowest Energy Line Shown)

01	-	Injector
0L	-	Pre-accelerator
2R	-	Second Recombiner
1L	-	First Linac
1S	-	First Spreader
1E	-	First Extractor
1A	-	First Arc
1R	-	First Recombiner
2L	-	Second Linac
2S	-	Second Spreader
2E	-	Second Extractor
2A	-	Second Arc
2C	-	Transport Channel



DIMENSION UNITS:
XX.XX m = METERS
(XX.XX) = INCHES
XXX.XX = DECIMAL FEET
XX'-XX" = FEET - INCHES

- NOTE:
- ARC TYPE GIRDER ELEMENT ASSY & DWG NO. SEE CEBAF SPECIFICATION 28401-S-007.
 - *XXXXXXX* DENOTES ELEMENTS IN BEAM LINE WITH POWER REMOVED.

AREA	SIGNATURE	DATE
VAC	S. WILLIAMS	03/12/98
INSTR	K. CAPEK	03/13/98
MAG	M. WISEMAN	03/18/98
OPS	S. SUHRING	03/19/98
ALIGN	C. CURTIS	03/11/98

DRAWN		DATE	
JACKI R. SMITH	07/07/95	W. OREN	03/18/98
C. GRAVES	03/12/98	SEE LEFT	

CADD ID NO. 284050008revJ
 APPROVALS
 DATE
 APPROVED
 DATE
 APPROVED
 DATE

DRAWN: JACKI R. SMITH
 CHECKED: C. GRAVES
 APPROVED: W. OREN
 APPROVED: SEE LEFT

SIZE: 11x17
 SHEET: 1 OF 1

BEAM TRANSPORT MACHINE CONFIGURATION 1ST SPREADER
 28405-E-0008
 28401-E-0001