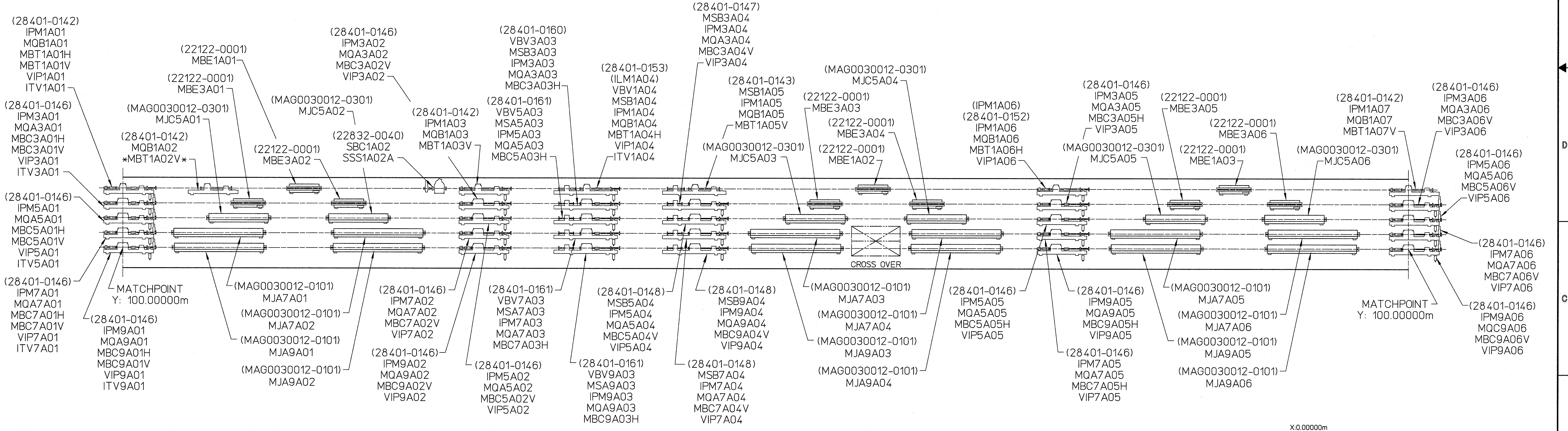
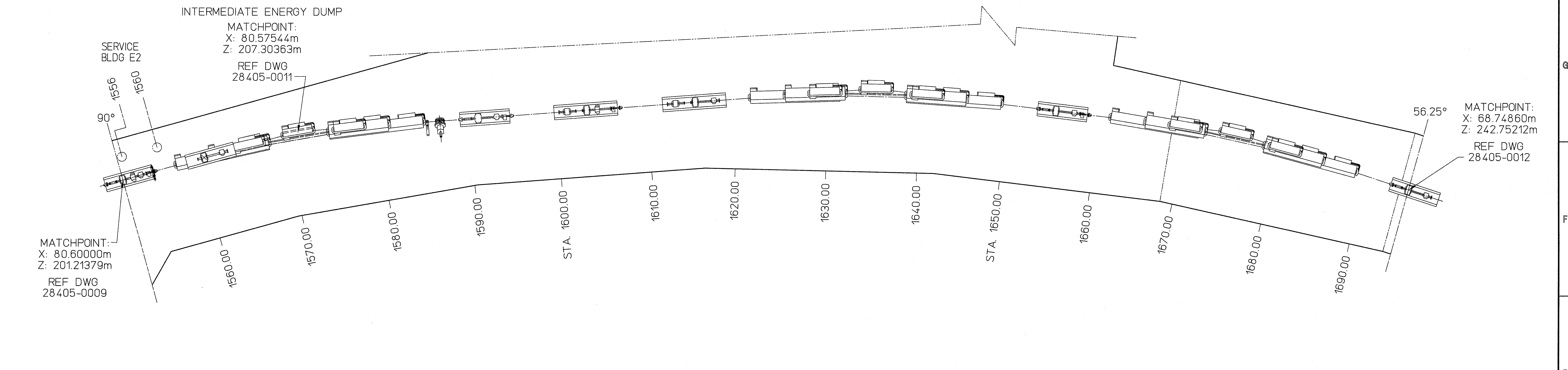


REVISIONS				
ZONE	REV.	DESCRIPTION	DATE	APPROVED
H	INCORP. ECO#1030.	RS MAR03	27MAR03	W.OREN
J	INCORP. ECO #1032.	RS AU04	27SEP04	T.WHITLICH
K	INCORP. ECO #1036.	RS SEP06	09JAN07	T.WHITLICH
L	INCORPORATE ECO NO. 1047	RDW JUL 11	09-18-11	S.S.



LEGEND
(Indicating Lowest Energy Line Shown)

- 01 - Injector
- 0L - Pre-accelerator
- 2R - Second Recombiner
- 1L - First Linac
- 1S - First Spreader
- 1E - First Extractor
- 1A - First Arc
- 1R - First Recombiner
- 2L - Second Linac
- 2S - Second Spreader
- 2E - Second Extractor
- 2A - Second Arc
- 2C - Transport Channel

GENERAL NOTES:

- ARC TYPE GIRDER ELEMENT ASSY & DWG NO. SEE CEBAF SPEC 28401-S-0002.
- *XXXXXX* - DENOTES ELEMENTS IN THE BEAM LINE WITHOUT POWER.

DIMENSION UNITS:
XX.XX m - METERS
XXX.XX - INCHES
XXX.XX - DECIMAL FEET
XX - XX* - FEET - INCHES

KEY PLAN

TABLES:

AREA	SIGNATURE	DATE	ON & TO, PER ANS Y14.5 DIMENSIONS ARE IN INCHES FRACTIONS ARE DECIMAL ANGLES ARE N/A XX.X N/A	CADD ID. NO. 284050010revL
VAC	S. WILLIAMS	03/12/98		
INSTR	K. CAPEK	03/13/98		
MAG	M. WISEMAN	03/18/98		
OPS	S. SUHRING	03/13/98		
ALIGN	C. CURTIS	03/11/98		

APPROVALS	DATE
DRAWN JACKI R. SMITH	07/10/95
CHECKED C. GRAVES	03/12/98
APPROVED W. OREN	03/18/98
APPROVED SEE LEFT	

BEAM TRANSPORT MACHINE CONFIGURATION 1ST ARC- 1ST SECTION

28405-E-0010

1 OF 1