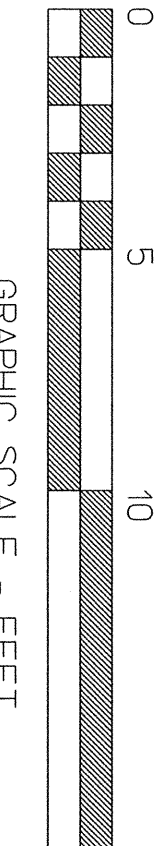
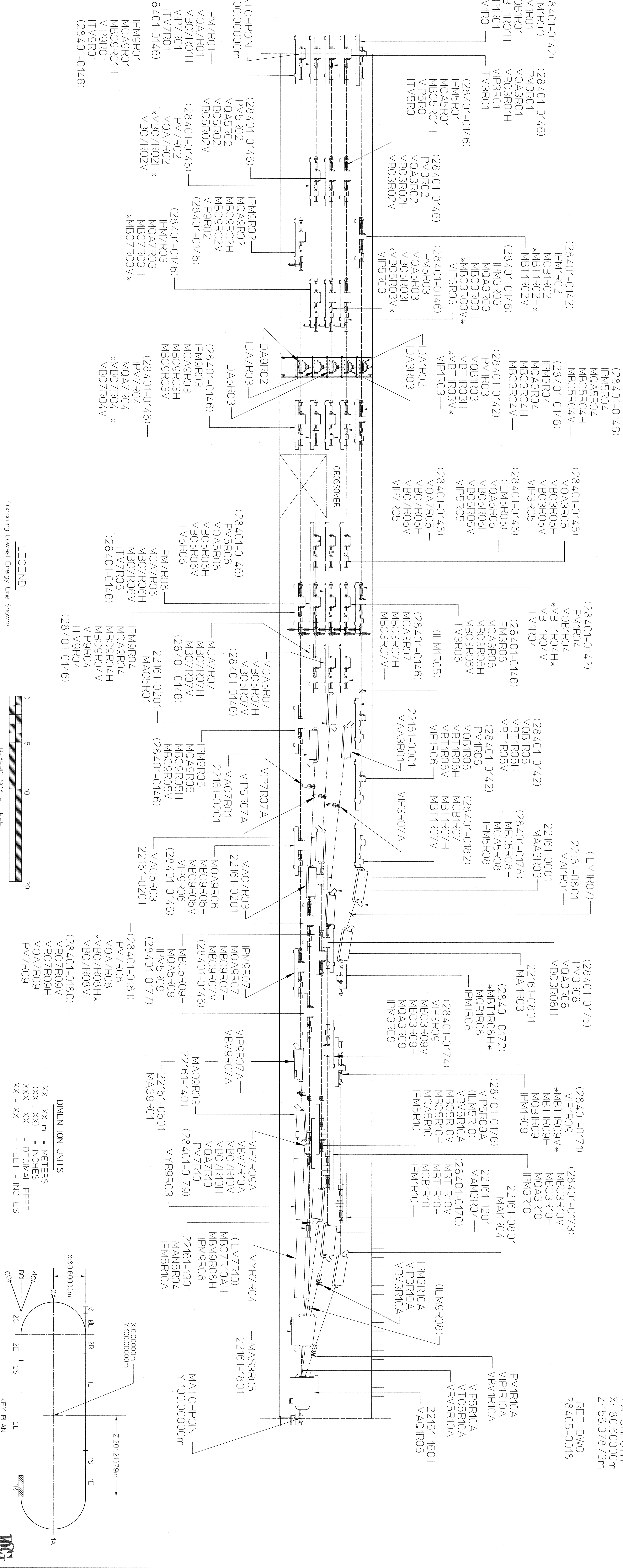
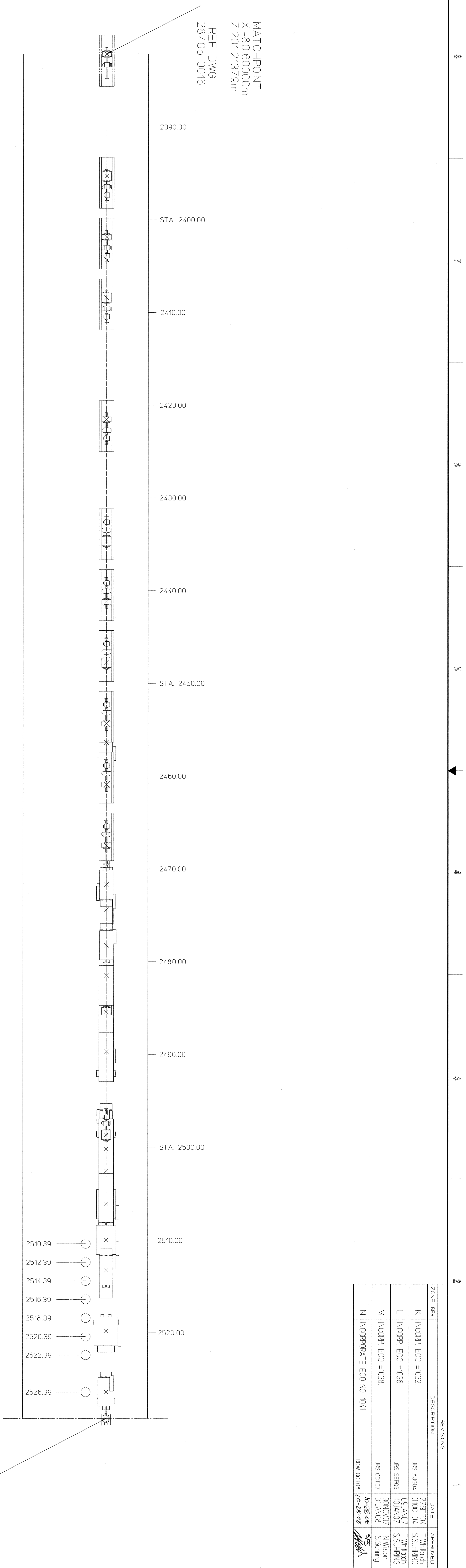
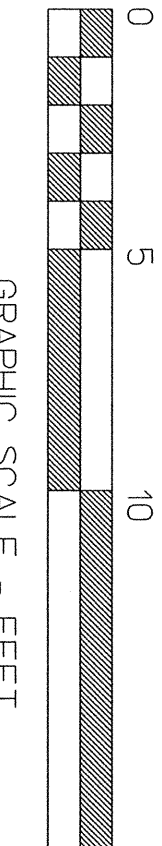


ZONE	REV	DESCRIPTION	DATE	APPROVED
K	INCORP EDO #1032	JRS ALDQ	25/SEP/04	T. WILSON
L	INCORP EDO #1036	JRS ALDQ	09/JAN/07	S. SILVER
M	INCORP EDO #1038	JRS ALDQ	30/JAN/07	T. WILSON
N	INCORPORATE EDO NO. 1041	JRS ALDQ	31/JAN/08	S. SILVER



DIMENSION UNITS
 XX XX m = METERS
 XXX XXI = INCHES
 XXX XX = DECIMAL FEET
 XX - XX = FEET - INCHES

LEGEND
 (Including Lowest Energy Line Shows)
 01 - Injector
 02 - Second Recombiner
 1S - First Linoc
 1R - First Recombiner
 1A - First A/C
 1R - First Recombiner
 2E - Second Linoc
 2E - Second Extiractor
 2C - Second A/C
 2C - Transport Channel



GENERAL NOTES
 1 ARC TYPE GINGER ELEMENTS & ASSY DWG NO SEE CEBAF SPECIFICATION 28401-S-0002
 2 LINE WITHOUT POWER
 *XXXXXXXX - DENOTE ELEMENT IN THE BEAM

AREA	SIGNATURE	DATE	DESCRIPTION
VAC	S. WILSON	04/04/98	DESIGNER
INST	K. COPPK	04/04/98	PROJECT MANAGER
MAG	M. WILSON	04/12/98	MANAGER
OPS	S. SILVER	04/09/98	OPERATIONS
ALIGN	C. CUTLER	04/09/98	ALIGNMENT

CDRIP ID NO.	DATE	DESCRIPTION
284050017REV N	04/12/98	ISSUED FOR CONSTRUCTION
28405-E-0017	04/12/98	ISSUED FOR CONSTRUCTION

28.405-E-0017
 BEAM TRANSPORT
 MACHINE CONFIGURATION
 1ST RECOMBINER
 SHEET NO. 1 OF 1
 DATE 04/12/98
 DRAWN BY JRS ALDQ
 CHECKED BY JRS ALDQ
 APPROVED BY JRS ALDQ