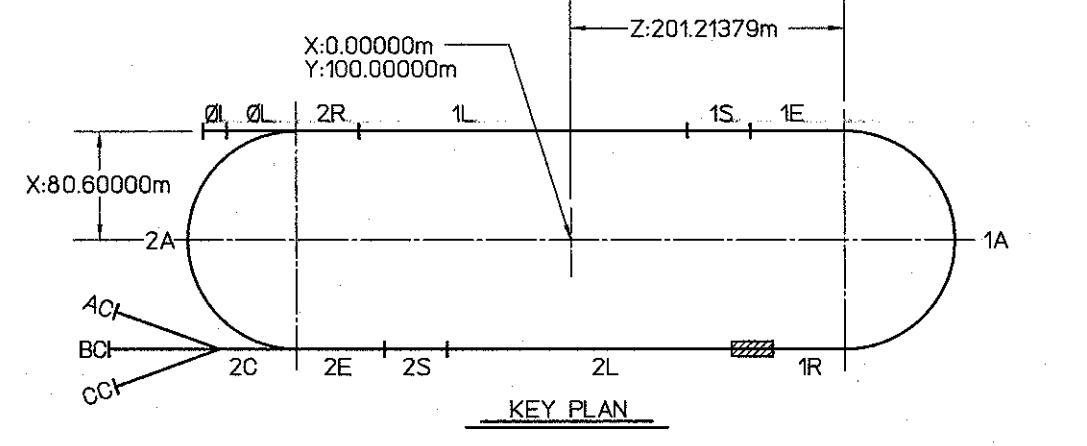
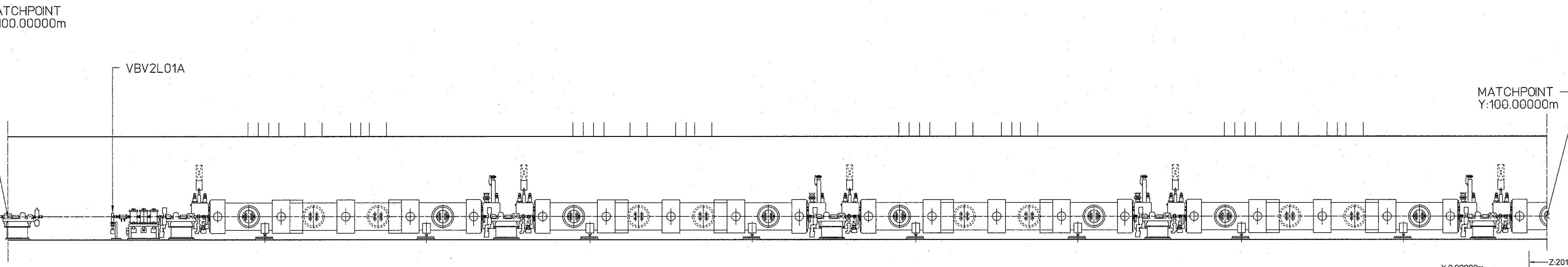
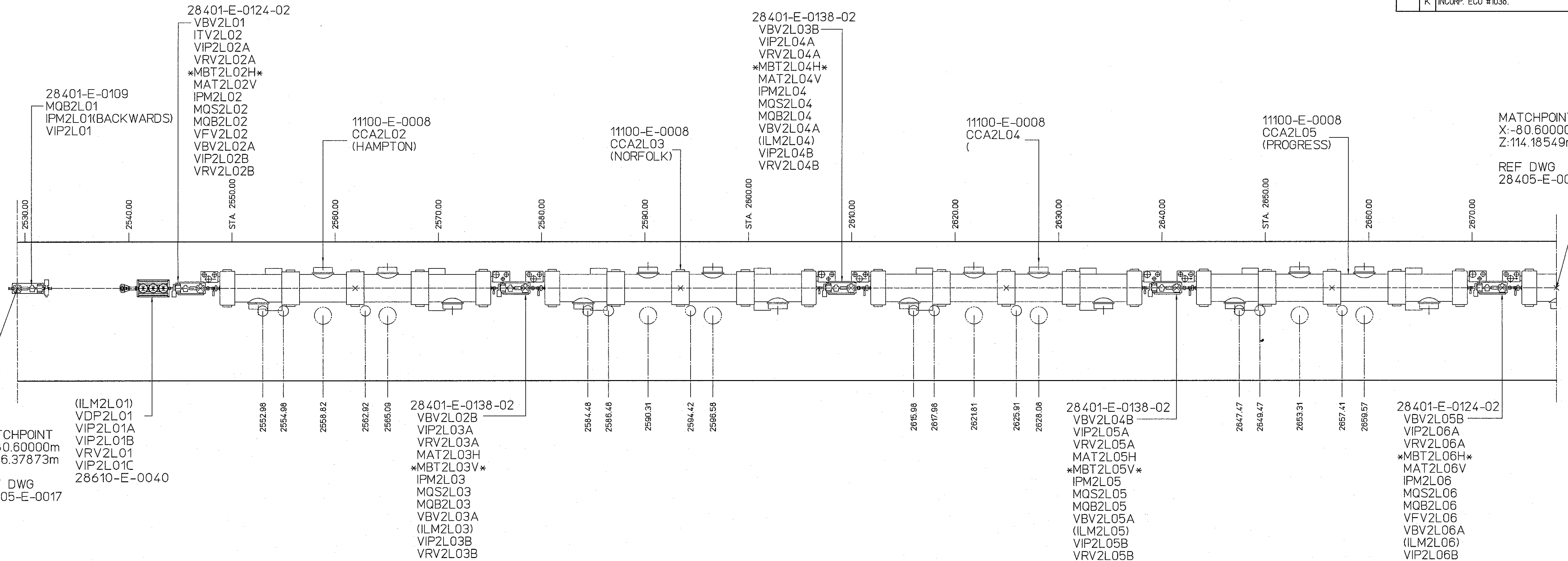


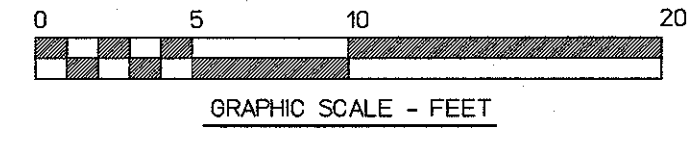
REVISIONS				
ZONE	REV.	DESCRIPTION	DATE	APPROVED
	-	CR 95-006		BELOW
A	INCORP.	ECO 28405-0277	JRS JAN98	19FEB98 W.OREN S.SUHRING
B	INCORP.	ECO 28405-0279	JRS JAN99	29JAN99 W.OREN S.SUHRING
C	INCORP.	ECO 28405-0280	JRS JUN99	08JUL99 W.OREN S.SUHRING
D	INCORP.	ECO 28405-0283	JRS OCT99 dtd NG&C	12OCT99 W.OREN S.SUHRING
E	INCORP.	ECO 28405-0287	JRS MAY01	22JUN01 SFS M.WISEMAN
F	INCORP.	ECO #1030	JRS MAR03	27MAR03 W. Oren S.F.S.
G	INCORP.	ECO #1031	JRS NOV03	18DEC03 W.OREN S.SUHRING
H	INCORP.	ECO #1032	JRS AUG04	27SEP04 T.Whilatch S.SUHRING
J	INCORP.	ECO #1034	JRS FEB05	14NOV05 T.Whilatch S.SUHRING
K	INCORP.	ECO #1038	JRS SEP07	11/3/07 SFS



NOTES
 1. *XXXXXXX* DENOTES ELEMENTS IN THE BEAM LINE WITHOUT POWER.

DIMENSION UNITS
 XX . XX m = METERS
 (XX) . (XX) = INCHES
 XXX . XX = DECIMAL FEET
 XX - XX = FEET - INCHES

- LEGEND
 (Indicating Lowest Energy Line Shown)
- 0I - Injector
 - 0L - Pre-accelerator
 - 2R - Second Recombiner
 - 1L - First Linac
 - 1S - First Spreader
 - 1E - First Extractor
 - 1A - First Arc
 - 1R - First Recombiner
 - 2L - Second Linac
 - 2S - Second Spreader
 - 2E - Second Extractor
 - 2A - Second Arc
 - 2C - Transport Channel



AREA	SIGNATURE	DATE	REV. NO.	DATE
VAC	J.Prebil/S.Williams	04/04/96	284050018revK	
INSTR	Karel Capek			
MAG	Mark Wiseman	04/12/96		
OPS	S.Suhring	04/04/96		
ALIGN	C. Curtis	04/04/96		