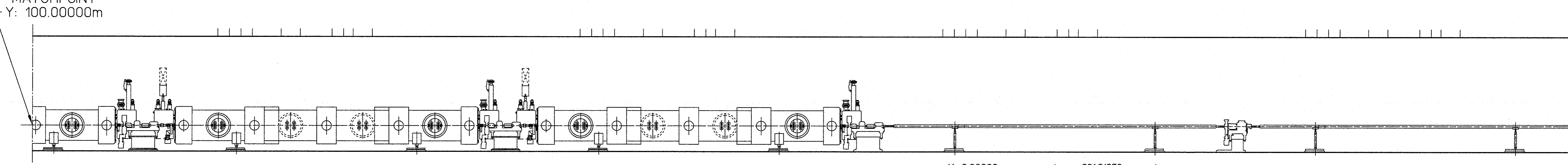
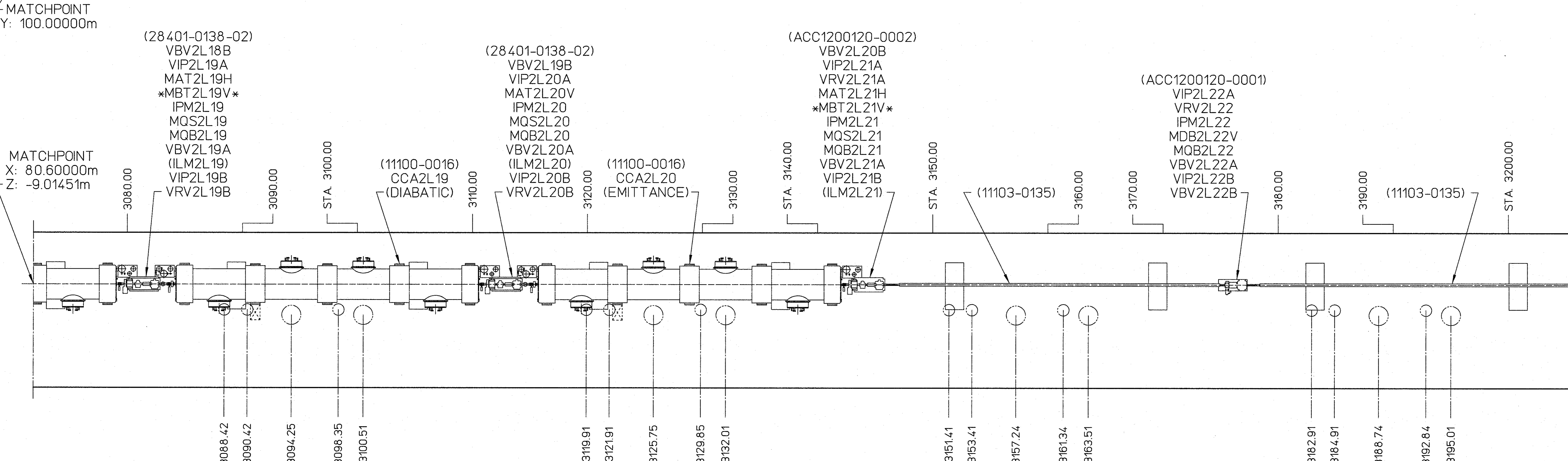
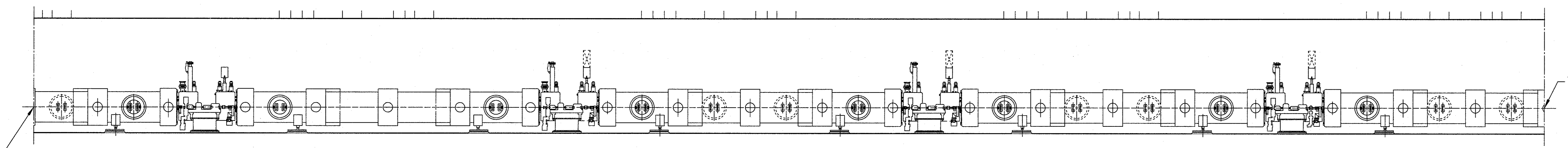
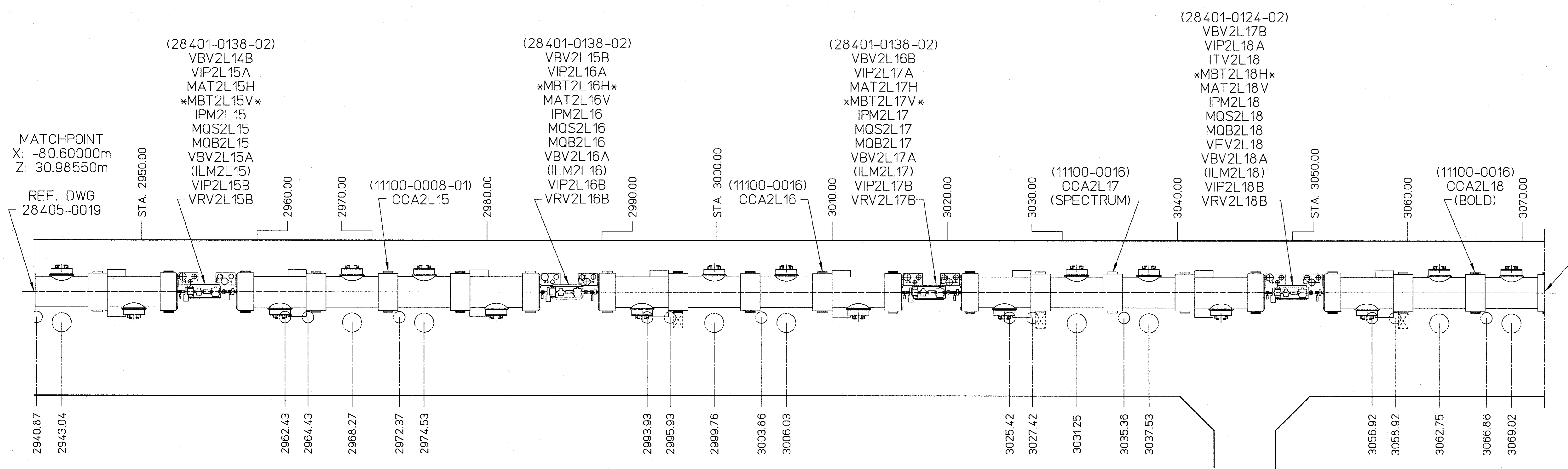


REVISIONS				
ZONE	REV	DESCRIPTION	DATE	APPROVED
	N	INCORPORATE ECO NO. 1041	ROW OCT08	28OCT08 N.Wilson
	P	INCORPORATE ECO NO. 1043	ROW AUG 09	18SEPT09 S.Suhning
	Q	INCORPORATE ECO NO. 1045	ROW SEPT 10	04OCT10 S.Suhning
	R	INCORPORATE ECO NO. 1047	ROW AUG 11	2-12-11 S.Suhning

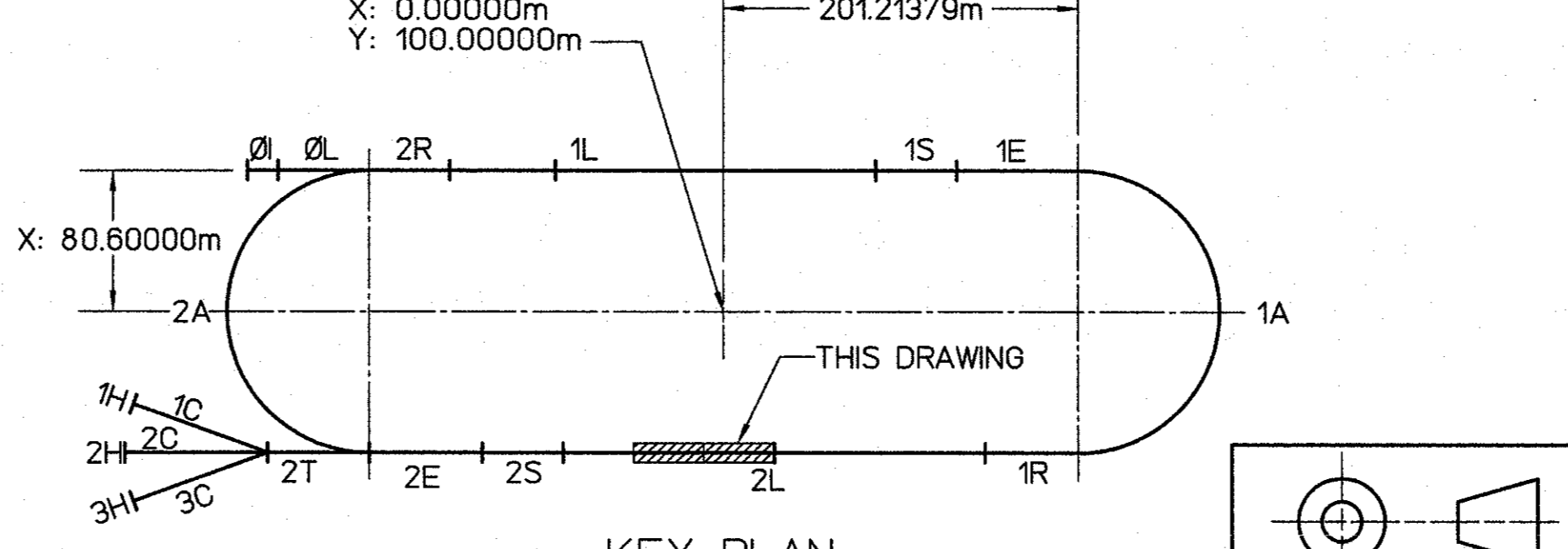


LEGEND
(Indicating Lowest Energy Line Shown)

- 01 - Injector
- 0L - Pre-accelerator
- 2R - Second Recombiner
- 1L - First Linac
- 1S - First Spreader
- 1E - First Extractor
- 1A - First Arc
- 1R - First Recombiner
- 2L - Second Linac
- 2S - Second Spreader
- 2E - Second Extractor
- 2C - Transport Channel

DIMENSION UNITS:
 XX.XX m = METERS
 (XX.XX) = INCHES
 XXX.XX = DECIMAL FEET
 XX'-XX" = FEET - INCHES

GRAPHIC SCALE - FEET



AREA	SIGNATURE	DATE	APPROVALS	DATE
VAC	SW Joe Preble	04/04/96		
INSTR	Karel Capek	04/12/96		
MAG	Mark Wiseman	04/04/96		
OPS	S. Suhning	04/04/96		
ALIGN	C. Curtis			

CADD ID. NO.	284050020revR
APPROVALS	
DATE	
DRAWN	JACKI R. SMITH
DATE	01/30/96
CHECKED	Chris Graves
DATE	04/04/96
APPROVED	W. Oren
DATE	04/12/96
APPROVED	SEC LEFT
DATE	

SIZE	DWG. NO.	REV.
1/48	28405-E-0020	R
USED ON ASSY NO.	28401-E-0001	SHEET
		1 OF 1

GENERAL NOTES:

- () INDICATES ELEMENTS NOT IN BEAM LINE VACUUM.
- *XXXXXX* - DENOTES ELEMENTS IN THE BEAM LINE WITHOUT POWER/SCREEN.



ESAP
The Continuous Electron Beam Accelerator Facility
NEWPORT NEWS, VIRGINIA
THE UNITED STATES DEPARTMENT OF ENERGY

BEAM TRANSPORT MACHINE CONFIGURATION SOUTH LINAC-3RD SECTION

28405-E-0020