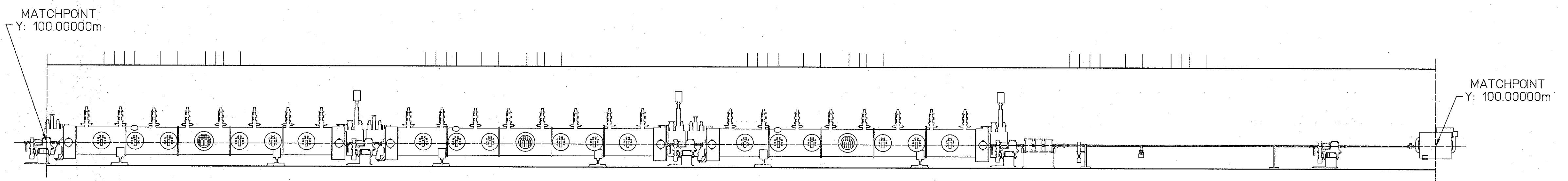
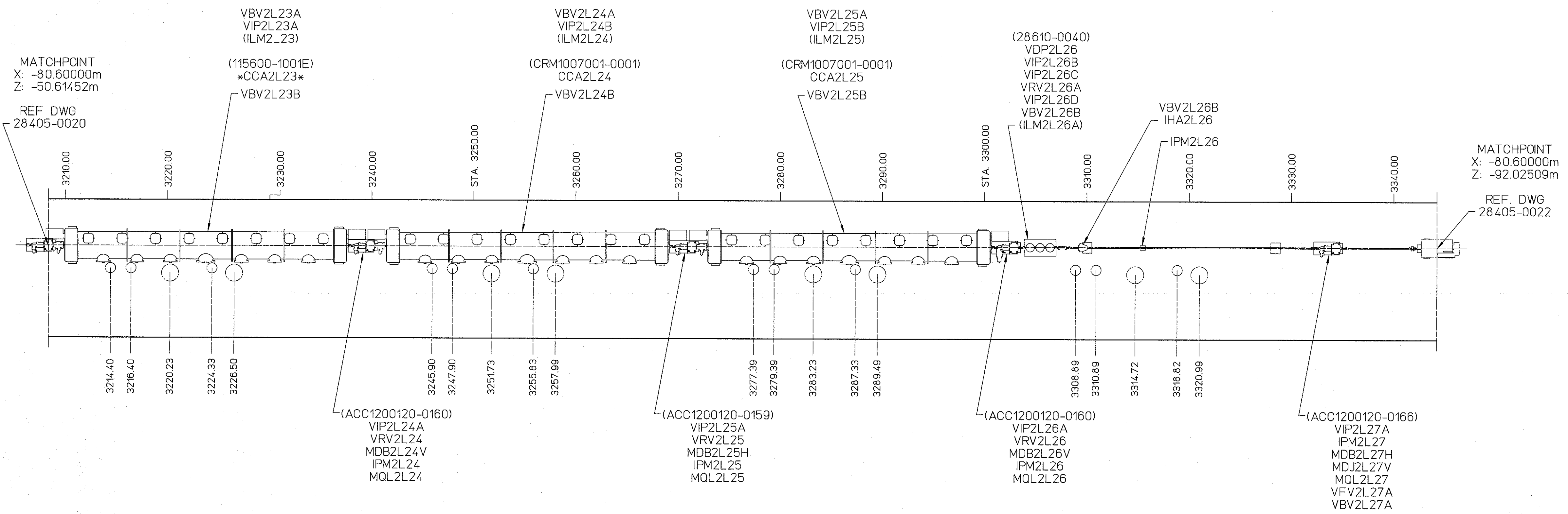


REVISIONS				
ZONE	REV.	DESCRIPTION	DATE	APPROVED
	H	INCORPORATE ECO NO. 1041	28 OCT 08	N Wilson
	J	INCORPORATE ECO NO. 1043	18 SEPT 09	N Wilson
	K	INCORPORATE ECO NO. 1045	04 OCT 10	S. Suhring
	L	INCORPORATE ECO NO. 1047	09 NOV 10	N Wilson



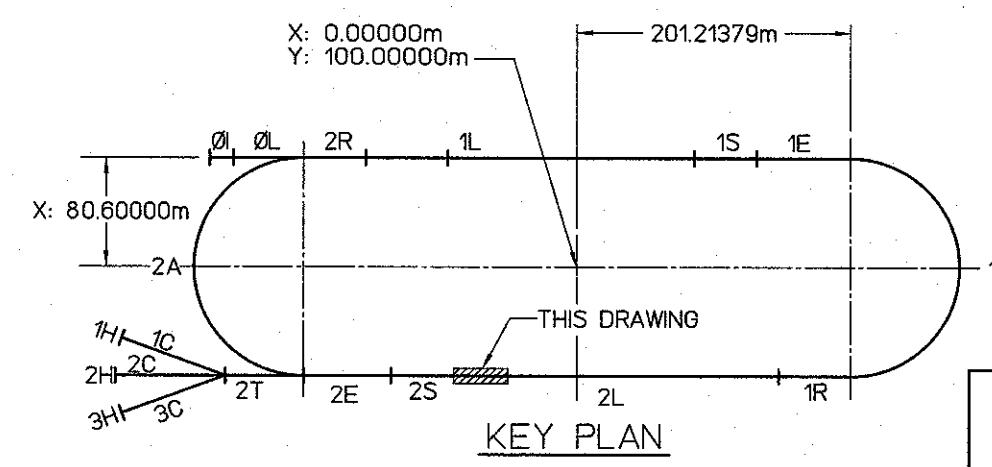
**LEGEND**  
(Indicating Lowest Energy Line Shown)

- ØI - Injector
- ØL - Pre-accelerator
- 2R - Second Recombiner
- 1L - First Linac
- 1S - First Spreader
- 1E - First Extractor
- 1A - First Arc
- 1R - First Recombiner
- 2L - Second Linac
- 2S - Second Spreader
- 2E - Second Extractor
- 2A - Second Arc
- 2C - Transport Channel

**DIMENSION UNITS:**

- XX.XX m = METERS
- (XX.XX) = INCHES
- XXX.XX' = DECIMAL FEET
- XX - XX" = FEET - INCHES

0 5 10 20  
GRAPHIC SCALE - FEET



AREA	SIGNATURE	DATE	DM & TO, PER ANS Y14.5 UNLESS OTHERWISE SPECIFIED TOLERANCES ARE IN INCHES FRACTIONS DECIMAL ANGLES * N/A ** & N/A # N/A XXX.X	CADD ID. NO.	APPROVALS	DATE
VAC	J.Preble/S.Williams	04/04/96		284050021revL		
INSTR	Karel Capek	04/04/96				
MAG	Mark Wiseman	04/12/96				
OPS	S.Suhring	04/04/96				
ALIGN	C.J. Curtis	04/06/96				

APPROVED	DATE	APPROVED	DATE
Jacki Smith	04/04/96		
SEE LEFT			
SEE LEFT			

<b>BEAM TRANSPORT MACHINE CONFIGURATION SOUTH LINAC - 4TH SECTION</b>	
SIZE/DWG. NO. <b>E 28405-E-0021</b>	REV. L 1/48 USED BY KSY NO. 28401-E-0001 SHEET 1 OF 1

**GENERAL NOTES:**

1. \*XXXXXX\* - DENOTES ELEMENTS IN BEAM LINE WITHOUT POWER.

