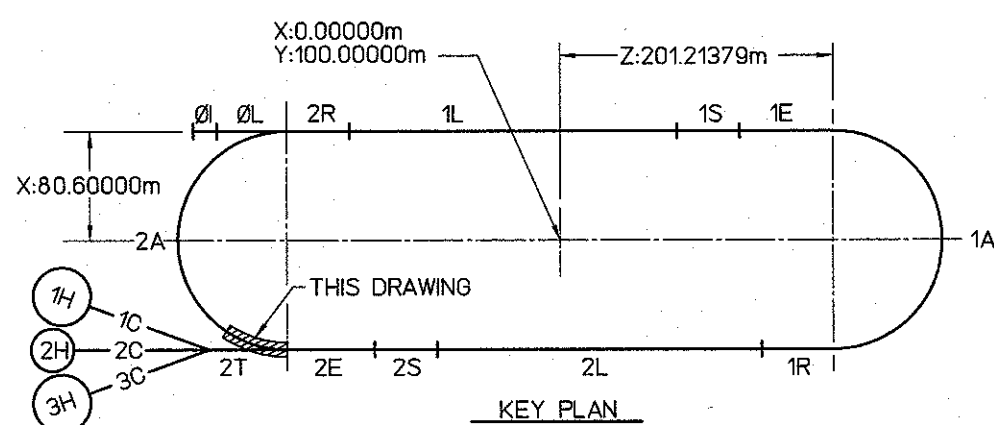
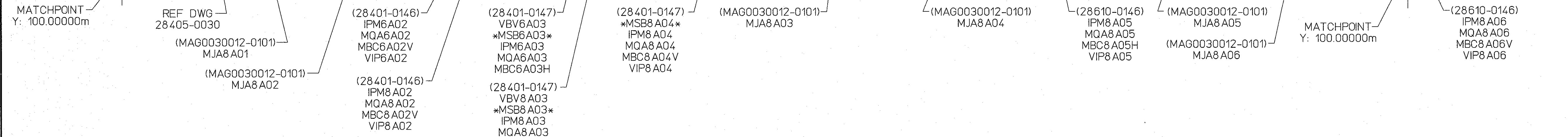
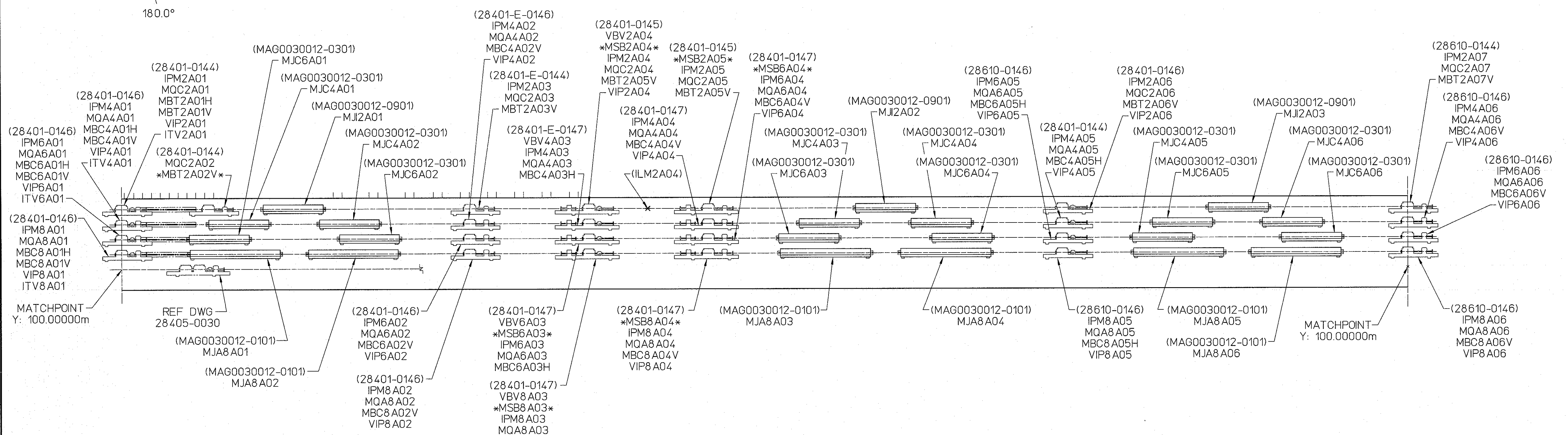
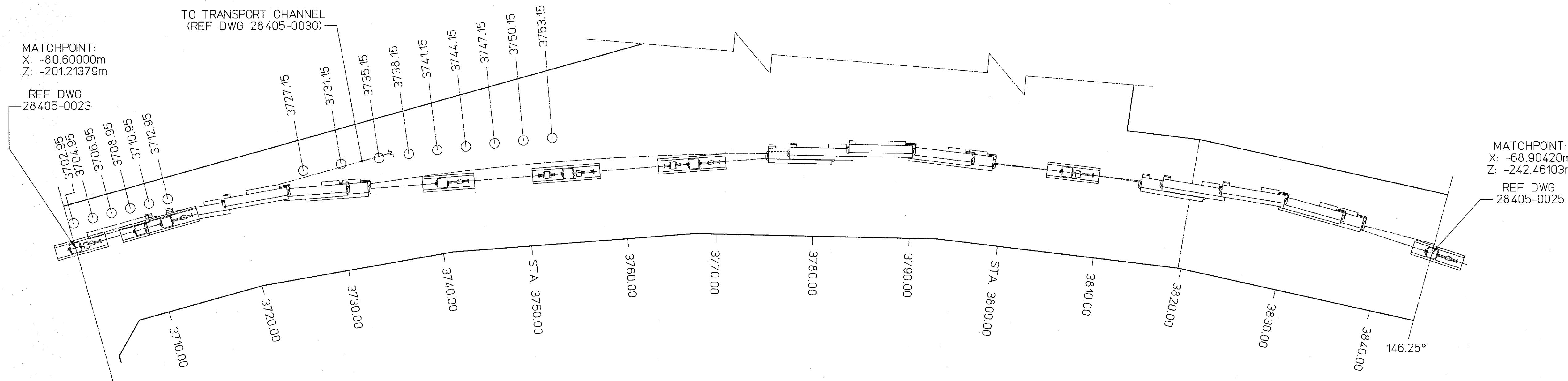


REVISIONS				
ZONE	REV.	DESCRIPTION	DATE	APPROVED
E	INCORP. ECO #1034.	JRS FEB05	16NOV05 07DEC05	T. Whitlatch S. Suhling
F	INCORP. ECO #1035.	JRS FEB06	30MAR06 07APR06	T. Whitlatch S. Suhling
G	INCORP. ECO #1036.	JRS SEP06	09JAN07 10JAN07	T. Whitlatch S. Suhling
H	INCORPORATE ECO NO. 1047	RDW AUG 11	9-19-11 2/4/11	SES MJD



GENERAL NOTES:

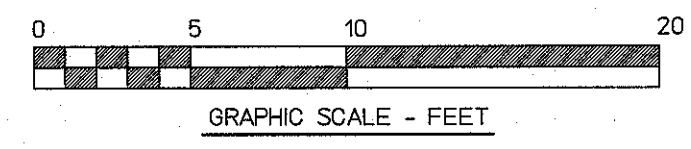
- ARC TYPE GIRDER ELEMENTS & ASSY DWG NO. SEE CEBAF SPECIFICATION 29401-S-0002
- *XXXXXXX* - DENOTES ELEMENTS IN THE BEAM LINE WITHOUT POWER

DIMENSION UNITS:

XX.XX m = METERS
 (XX)XX = INCHES
 XXX.XX = DECIMAL FEET
 XX - XX' = FEET - INCHES

LEGEND

- (Indicating Lowest Energy Line Shown)
- 0I - Injector
 - 0L - Pre-accelerator
 - 2R - Second Recombiner
 - 1L - First Linac
 - 1S - First Spreader
 - 1E - First Extractor
 - 1A - First Arc
 - 1R - First Recombiner
 - 2L - Second Linac
 - 2S - Second Spreader
 - 2E - Second Extractor
 - 2A - Second Arc
 - 2C - Transport Channel



AREA	SIGNATURE	DATE	APPROVALS	DATE
VAC	S. Williams	05/23/96		
INST	K. Capek	05/28/96		
MAG	M. Wiseman	05/23/96		
OPS	S. Suhling	05/28/96		
ALIGN	C. Curtis	05/22/96		

CADD I.D. NO. 284050024revH	DRAWN CHRIS GRAVES 2-05-96	CHECKED Jacki Smith 05/22/96	APPROVED W. Oren 05/28/96
--------------------------------	----------------------------------	------------------------------------	---------------------------------

SIZE (DWG. NO.) E 28405-E-0024	REV. H
-----------------------------------	-----------