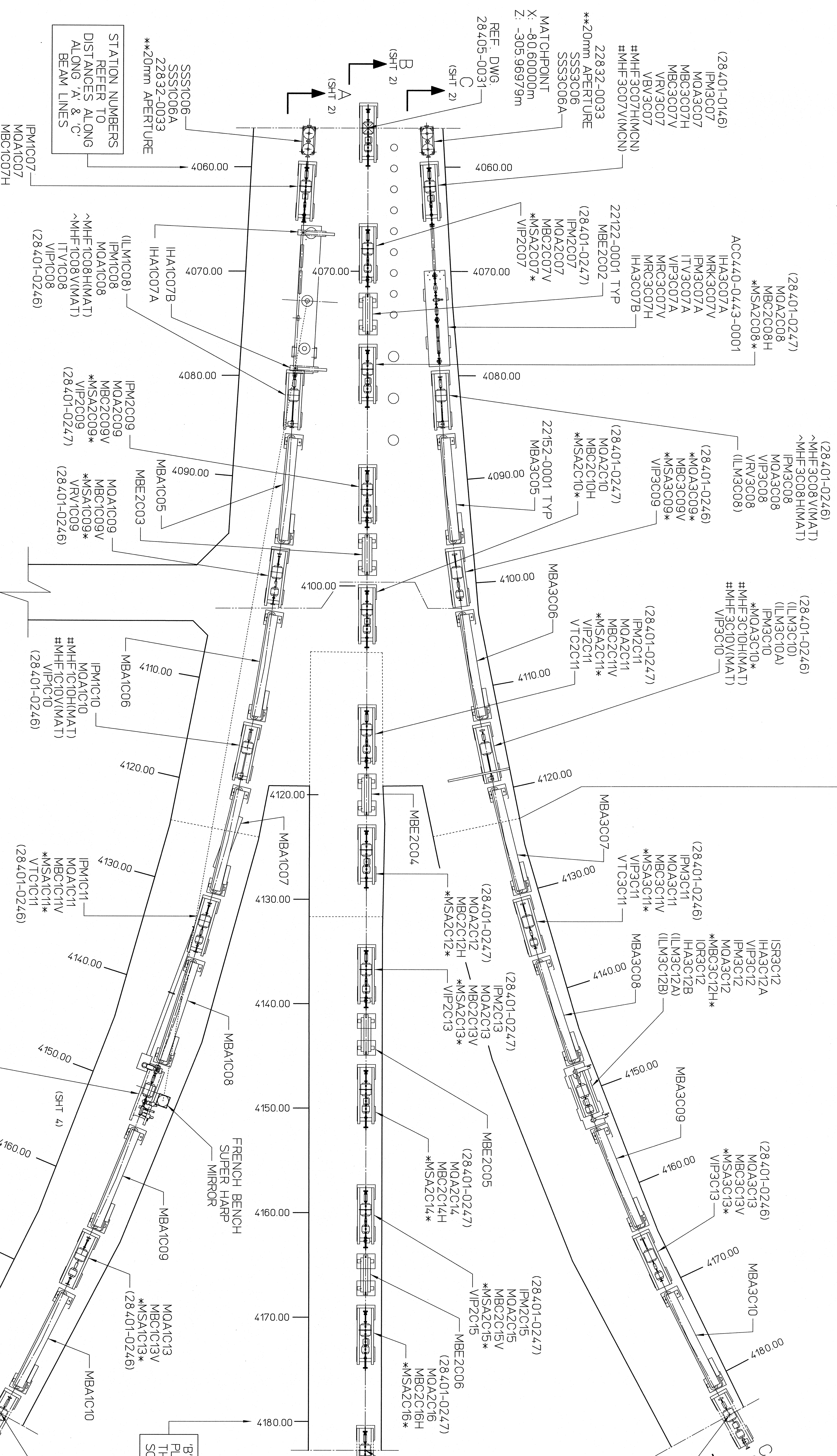


ZONE	REV.	DATE	APPROVED
T	INCORP ECD #1038	18MAR08	N.Wilson
U	INCORPORATE ECD NO. 1041	28OCT08	S. Slifka
V	INCORPORATE ECD NO. 1043	28OCT08	N.Wilson
		ROW ALD 09	28OCT08
		28OCT08	S. Slifka

TUNNEL HEIGHT CHANGE

10 FT. 0 IN. HT. 7 FT. 0 IN. HT.



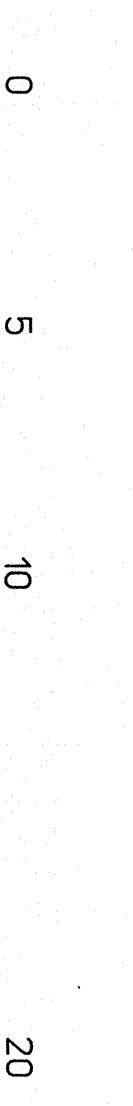
STATION NUMBERS REFER TO DISTANCES ALONG 'A' & 'C' BEAM LINES

SSS1C006  
SSS1C006A  
22832-0033  
\*\*20mm APERTURE

IPM1C07  
MQA1C07  
MBC1C07H  
MBC1C07V  
\*\*MHF1C07H(MAT)\*  
VIP1C07  
\*\*MHF1C07V(MAT)\*  
~MHF1C07B(MAT)  
~MHF1C07H(MCN)  
#MHF1C07V(MCN)  
(28401-0146)

LEGEND

- (Indicating Lowest Energy Line Shown)
- 0L - In-factor
  - 0R - Pre-accelerator
  - 1L - Second Recombiner
  - 1R - First Linode
  - 1E - First Linode
  - 1A - First Linode
  - 1S - First Linode
  - 1B - First Linode
  - 1C - First Linode
  - 1D - First Linode
  - 1E - First Linode
  - 1F - First Linode
  - 1G - First Linode
  - 1H - First Linode
  - 1I - First Linode
  - 1J - First Linode
  - 1K - First Linode
  - 1L - First Linode
  - 1M - First Linode
  - 1N - First Linode
  - 1O - First Linode
  - 1P - First Linode
  - 1Q - First Linode
  - 1R - First Linode
  - 1S - First Linode
  - 1T - First Linode
  - 1U - First Linode
  - 1V - First Linode
  - 1W - First Linode
  - 1X - First Linode
  - 1Y - First Linode
  - 1Z - First Linode



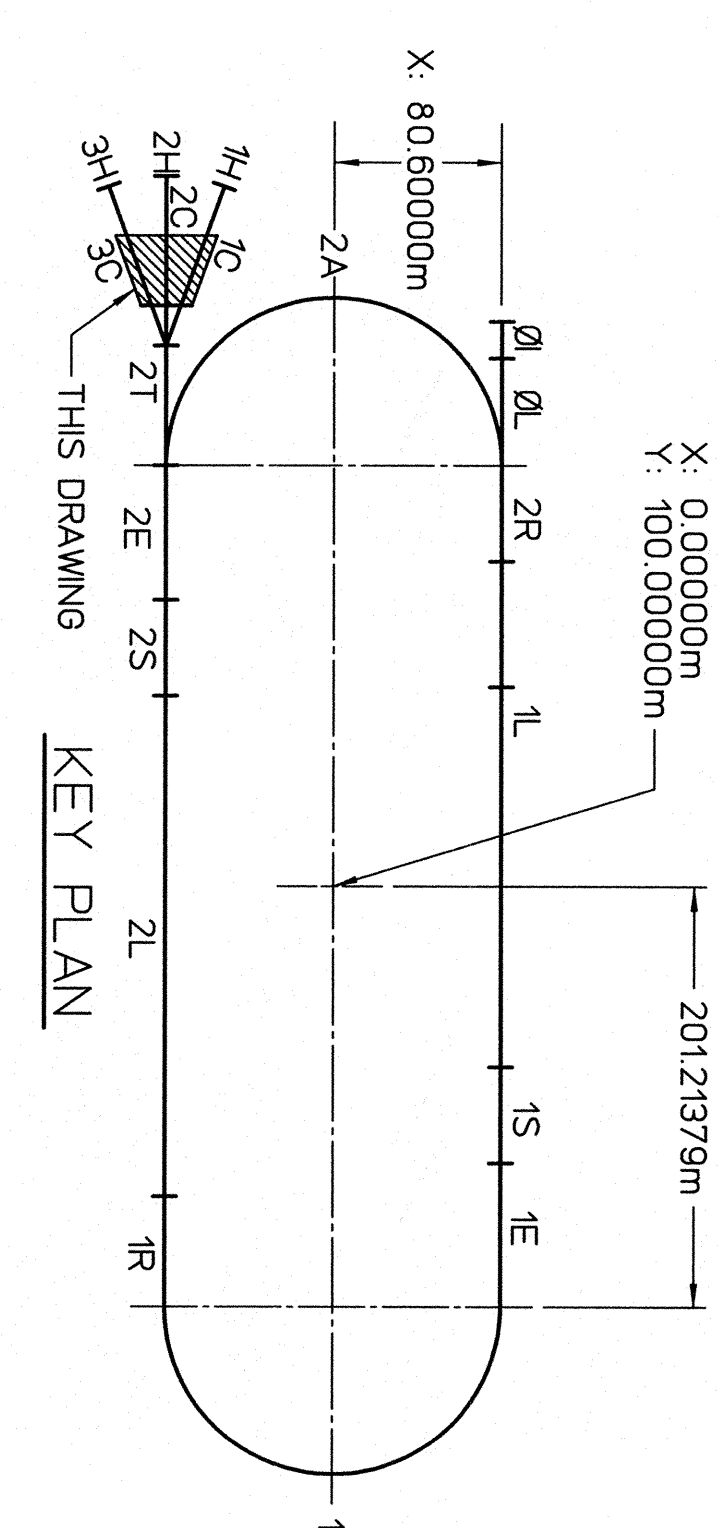
DIMENSION UNITS

- XX.XX m METERS
- XXX.XXX INCHES
- XXXX.XXXX FEET
- XX'-XX" FEET INCHES

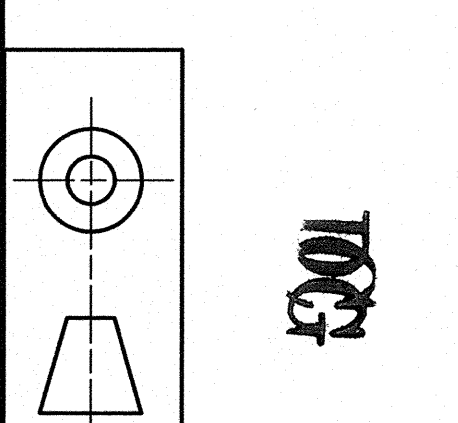
GENERAL NOTES:

1. INSTALLATION OF LINES A & C PER CEBAF DWG 28401-0032
2. INSTALLATION OF LINE B PER CEBAF DWG 28401-0029
3. \*XXXXXX\* - DENOTES ELEMENTS IN BEAM LINE WITHOUT POWER
4. # - 'AT' MAGNETS IN THE FAST FEEDBACK SYSTEM
- ^ - 'AT' MAGNETS IN THE POSITION MODULATION SYSTEM

(AOC4400443-0000)



B' LINE STATION NUMBER PLACED IN HORIZONTAL PLANE THROUGH THE CENTER OF THE SOUTH LINAC



AREA	SIGNATURE	DATE	REVISION
VAC	S. Wilson	05/16/98	1
INST	K. Opper	05/14/98	2
MAG	M. Wiseman	05/14/98	3
OPS	S. Slifka	05/19/98	4
ALIGN	C. Curtis	05/16/98	5