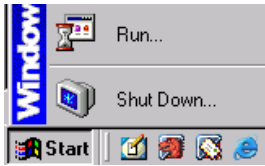


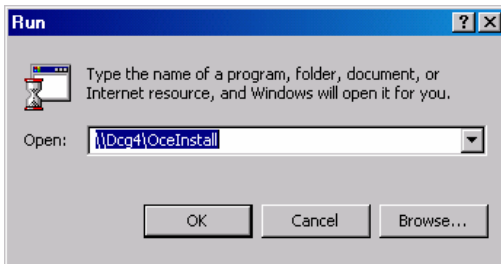
Downloading and Installing Electronic Job Ticket

To install a client over the network

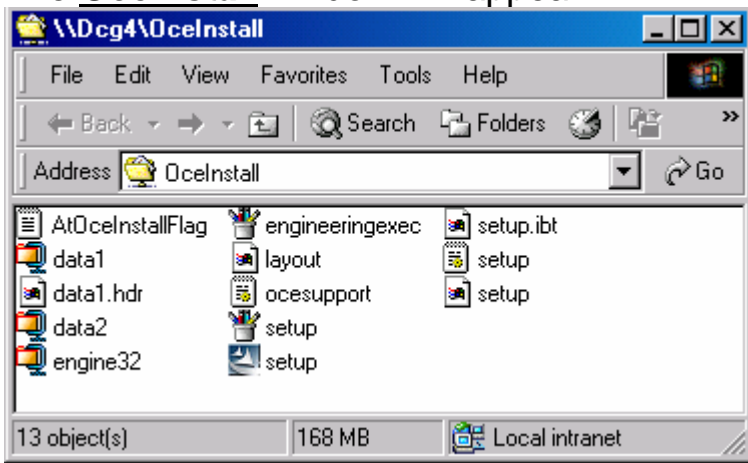
1. On your PC, click the start button to show you the Run selection



2. When the Run menu comes up type in \\Dcg4\OceInstall and click OK



3. The OceInstall window will appear.

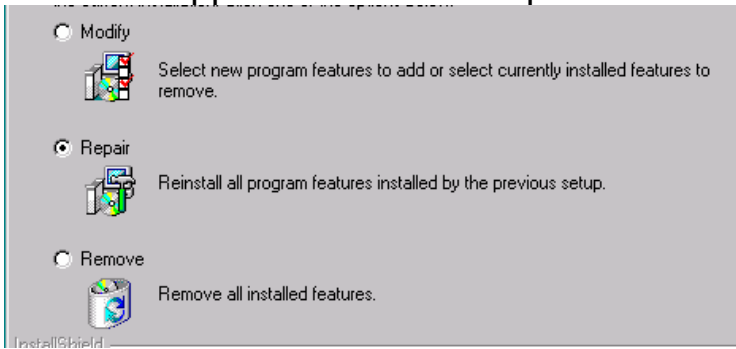


4. Double-click the 'Setup.exe' icon



5. The '**Welcome**' dialog box is displayed If you haven't loaded this version in the past.

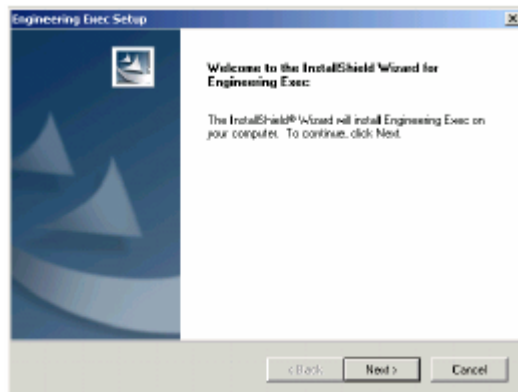
6. If you already have it loaded then a modify, repair or remove window will appear. Just select repair and follow the instructions.



7. Read the instructions on the Language setup box. Select a language and then click 'Next'

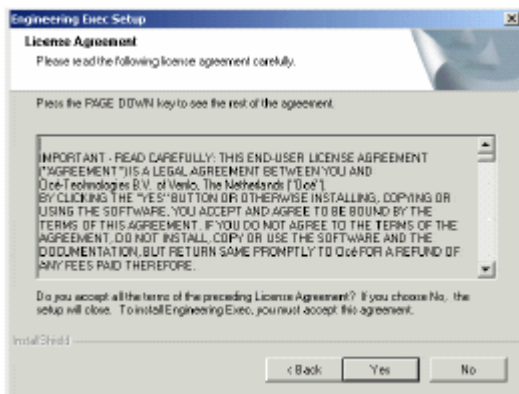
8. Install shield wizard will now prepare you PC for Engineering Exec installation.

9. Read the instructions on the 'Welcome' dialog box and then click 'Next'. The 'Software License Agreement' dialog box displays.



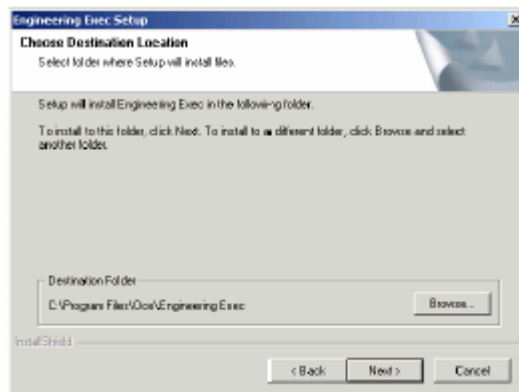
[4] The Engineering Exec Setup dialog box.

10. Read the 'Software License Agreement' and then click 'Yes' to accept the terms of the agreement. You must accept the agreement to continue with the installation.



[6] The License Agreement dialog box

11. The 'Information' dialog box displays. **Read the 'Information' dialog box and then click 'Next'** to continue with the installation. The 'Choose Destination Location' dialog box displays.

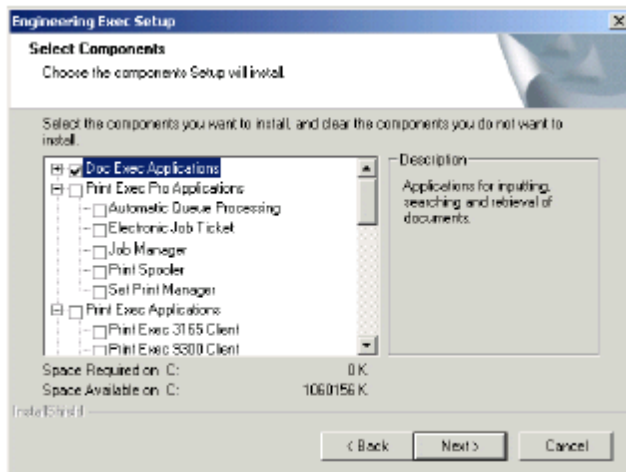


[7] Choose Destination Location dialog box.

12. Review the install location. If you want to install Engineering Exec in the destination folder listed, C:\Program Files\Oce\Engineering Exec, click 'Next'. If you want to install to a different folder, click 'Browse' to select a new location. After you have specified a new location, click 'Next'. The 'Select Components' dialog box displays.

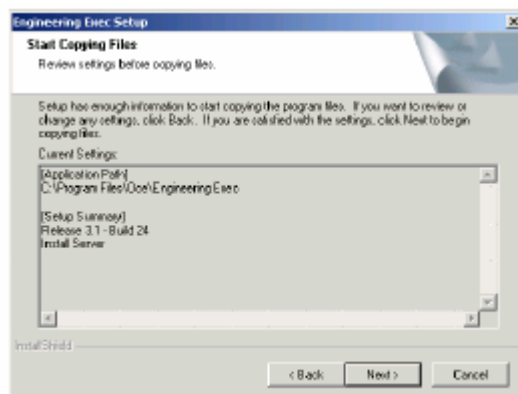
13. Select the components that you would like to install to the client PC. Only select the Electronic Job Ticket and the Job Manager. Select the drop down menu beside 'Print Exec Pro Applications'. Then select 'Electronic Job Ticket and Job Manager. After you have selected the desired components click 'Next'. The 'Summary' dialog box displays.

Note: De-select Sample Files before install.



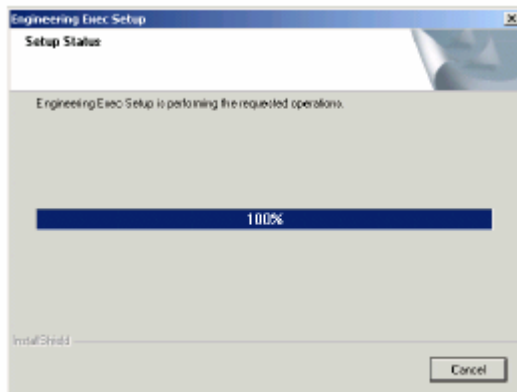
[17] Select Components dialog box

14. Review the information in the 'Summary' dialog box. If you are satisfied with the specified settings, click 'Next'. The 'Start Copying Files' dialog box displays. Click 'Next'. The 'Setup Status' dialog box displays.



[10] Start Copying Files dialog box

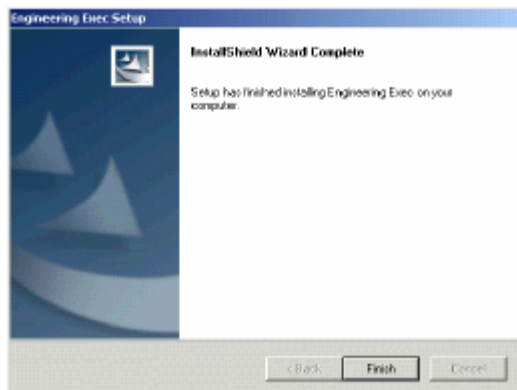
15. The 'Setup Status' dialog box provides a status bar that tracks the progress of the installation. When installation is complete, the 'InstallShield Wizard Complete' dialog box displays.



[11] Setup Status dialog box

Note: You may be asked to restart your machine, to use the new programs. If you are asked to restart your machine, you may select to restart your computer now or at a later time.

16. Click 'Finish' to complete the install.



[13] InstallShield Wizard Complete dialog box