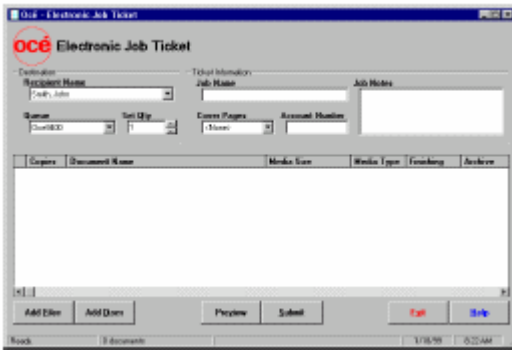


How to setup a Watermark on the PC based Electronic Job Ticket

1. Open your Electronic Job Ticket and add the documents that you would like printed.



2. In the gray area of the job ticket **RIGHT** mouse click for more options. You should see a drop down menu. Select Edit Recipients. Once this screen comes up you can select the tab Watermark Setup. On this tap you want to type in your Text in the field provided. Then select Size. In this area type in your preference, (**40** Recommended for B-Size). Next select Location. In this area use the drop down menu and select **Top Left to Bottom Right**. And finally select the color. In this area you want to select **Light Grey**. This will make the Watermark transparent on the drawing. Now click **OK** and return to the job ticket. You are ready to print your document with your Watermark.

