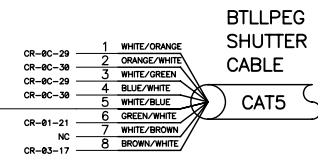
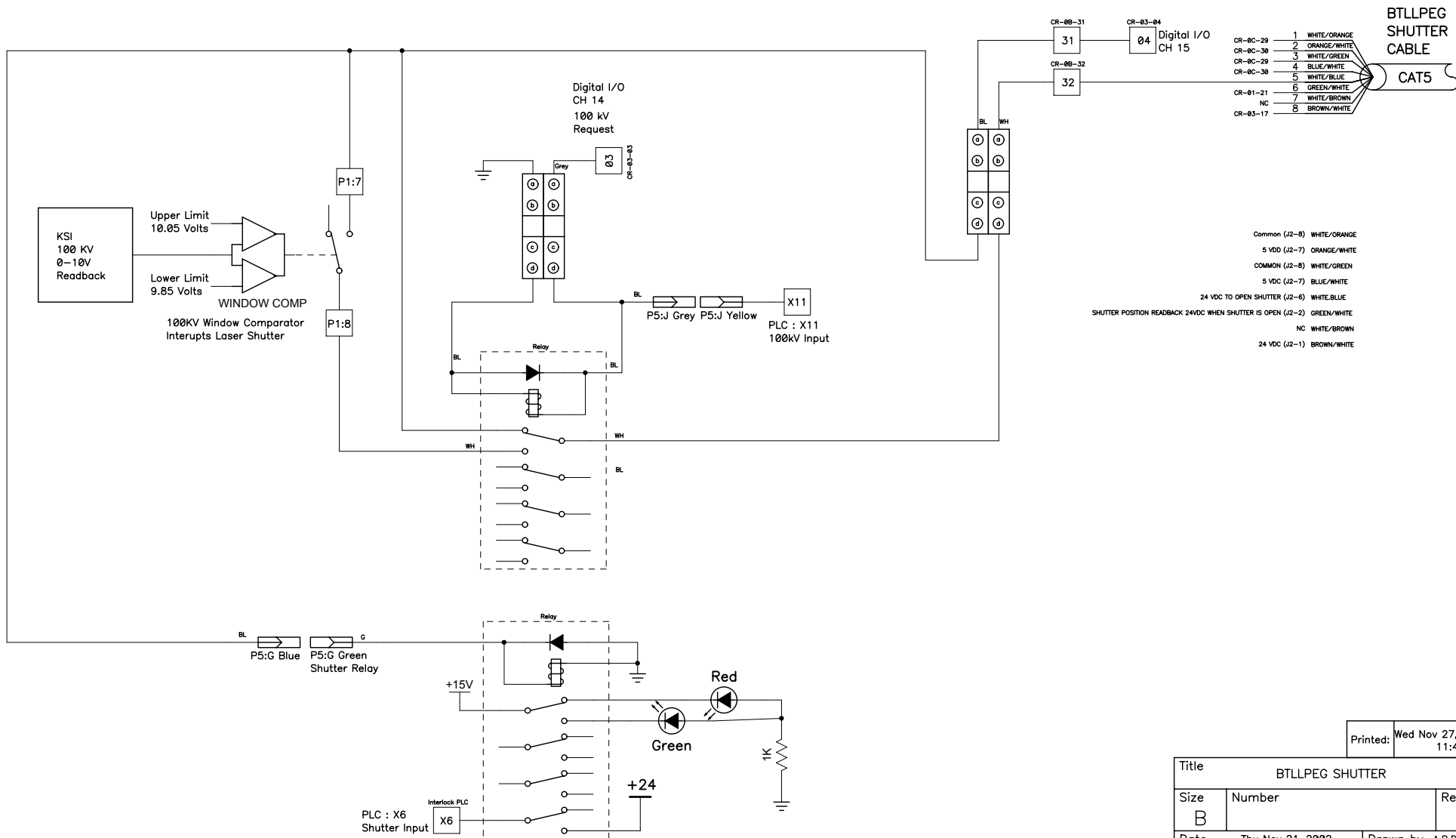


BTLLPEG SHUTTER CIRCUIT



- Common (J2-8) WHITE/ORANGE
- 5 VDD (J2-7) ORANGE/WHITE
- COMMON (J2-8) WHITE/GREEN
- 5 VDC (J2-7) BLUE/WHITE
- 24 VDC TO OPEN SHUTTER (J2-6) WHITE/BLUE
- SHUTTER POSITION READBACK 24VDC WHEN SHUTTER IS OPEN (J2-2) GREEN/WHITE
- NC WHITE/BROWN
- 24 VDC (J2-1) BROWN/WHITE

Printed: Wed Nov 27, 2002 11:40:56

Title		
BTLLPEG SHUTTER		
Size	Number	Rev
B		
Date	Thu Nov 21, 2002	Drawn by A.R.DAY
Filename	btllpeg_Shutter.sch	Sheet 1 of 1