

Schedule Changes: Since 2013-Aug-22

Rearrangement of the Cryo sequence:

- Software not ready to support the 2013-Sep-23 date for start of Cryo reconfiguration
- Risk analysis resulted in a change of plan.
- No 2K cryogens for majority of reconfiguration
- Impact on remaining SRF commissioning tasks (C50-11)

Mitigation:

- Careful planning and execution of parallel activities
- C50-11 and remaining SRF commissioning activities in the South Linac will be concurrent with initial beam operations in the Injector and North Linac.

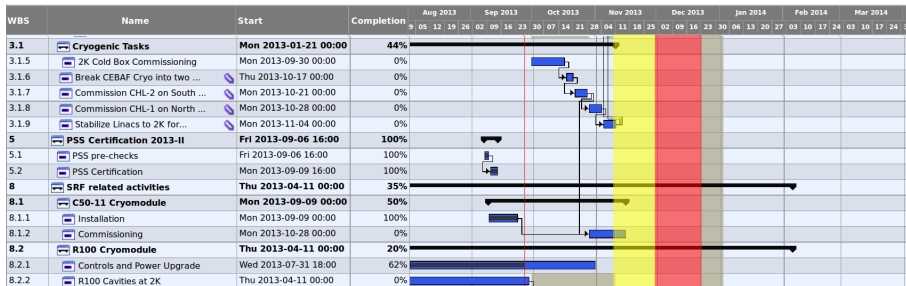
Result:

- A more serial Cryo reconfiguration plan, less steps with multiple changes.

No change to start of beam Operations.



CEBAF: SRF & CRYO Schedule



- Yellow shaded region: beam operations in Injector and North Linac
- Red shaded region: beam operation in South Linac. All SRF commissioning tasks must be completed.
- Not shown is the continuation of the remaining C100 commissioning.

CEBAF: SRF Status

SRF Commissioning North Linac Complete: 1308 MeV of Integrated Gradient!

Reported on 2013-09-20

North Linac SRF (re-)Commissioning Complete: Integrated Gradient: 1308 MeV (Goal: 1100 MeV).

SRF Commissioning update: Progress!!

Reported on 2013-09-20

SRF Commissioning complete in the North. Optimization of LLRF controls on C100 and LEM Fault data on C20 modules will continue until 2K cryogens disappear. South Linac SRF commissioning on C20/C50 nearly complete as well. C50-11 installation complete, cool down this week. Commissioning of C50-11 to be done late Oct/early Nov. C100 modules in the South is on going, until 2K cryogens disappear.

SRF Commissioning update: Progress

Reported on 2013-09-17

SRF Commissioning is nearing completion in the North. 1/4 cryomodule repair is complete, commissioning continues. C50-11 has been delivered to the South Linac. Installation in progress. North Linac commissioning nearly complete.

Linac Tasks

86%

Task ID	Task Name	Start Date	Progress %	Progress Bar
3.2.1	North Linac	Thu 2013-04-11 00:00	100%	
3.2.1.1	C20/C50 recomissioning NL	Thu 2013-04-11 00:00	100%	
3.2.1.1.1	C20/C50 Cavities at 2K	Thu 2013-04-11 00:00	100%	
3.2.1.1.2	C20/C50 EMAX Determined	Thu 2013-04-11 00:00	100%	
3.2.1.1.3	C20/C50 Q0 vs E Measured	Thu 2013-04-11 00:00	100%	
3.2.1.2	C100 Cryomodule	Thu 2013-04-11 00:00	100%	
3.2.1.2.1	C100 Cavities at 2K	Thu 2013-04-11 00:00	100%	
3.2.1.2.2	Circulator Status	Thu 2013-04-11 00:00	100%	
3.2.1.2.3	C100 EMAX Determined	Thu 2013-04-11 00:00	100%	
3.2.1.2.4	C100 Q0 vs E Measured	Thu 2013-04-11 00:00	100%	
3.2.2	South Linac	Thu 2013-04-11 00:00	73%	
3.2.2.1	C20/C50 recomissioning SL	Thu 2013-04-11 00:00	96%	
3.2.2.1.1	C20/C50 Cavities at 2K	Thu 2013-04-11 00:00	100%	
3.2.2.1.2	C20/C50 EMAX Determined	Thu 2013-04-11 00:00	94%	
3.2.2.1.3	C20/C50 Q0 vs E Measured	Thu 2013-04-11 00:00	94%	
3.2.2.2	C100 Cryomodule	Thu 2013-04-11 00:00	50%	
3.2.2.2.1	C100 Cavities at 2K	Thu 2013-04-11 00:00	100%	
3.2.2.2.2	Circulator Status	Thu 2013-04-11 00:00	100%	
3.2.2.2.3	C100 EMAX Determined	Thu 2013-04-11 00:00	0%	
3.2.2.2.4	C100 Q0 vs E Measured	Thu 2013-04-11 00:00	0%	

CEBAF Status Summary

Complete PSS certification

Complete $\frac{1}{4}$ Cryomodule repair and recommissioning

Complete North Linac SRF Commissioning (1300 MeV integrated gradient)

Complete C50-11 refurbishment and installation in tunnel (SL10 slot)

InProgress Establishing beamline vacuum in warm sections

InProgress Installation of Spectrometer Dump

InProgress C50-11 (SL10) Cooldown

InProgress South Linac C100 Commissioning and Recommissioning

InProgress Arc1 Box Supply tests into a dummy load, Arc2 Box Supply assembly and check out.

Remaining Cryo reconfigurations (starts Monday), establishing 2K LHe configuration and capacity for 12GeV CEBAF load

Remaining C50-11 (SL10) Commissioning



ABIL Compliance

Effort to ensure that all interlock jumpers are identified and properly recorded in the new ABIL system.

ABIL Compliance	93%	<p>ABIL Compliance: Almost Complete</p> <p><i>Reported on 2013-09-23</i></p> <p>27 out of the 29 identified jumpers have been addressed by the system owners. Resolution of the two remaining jumpers is not viewed as arduous and will get addressed as soon as possible.</p> <p>ABIL Compliance: significant progress</p> <p><i>Reported on 2013-09-17</i></p> <p>ABIL compliance making significant progress. Complete survey of the CEBAF service buildings has been performed. Identified jumpers have been communicated to the group owners for resolution.</p>
-----------------	-----	---

Inspections of the equipment in CEBAF Service buildings identified 29 interlock jumpers (from old 6 GeV CEBAF).

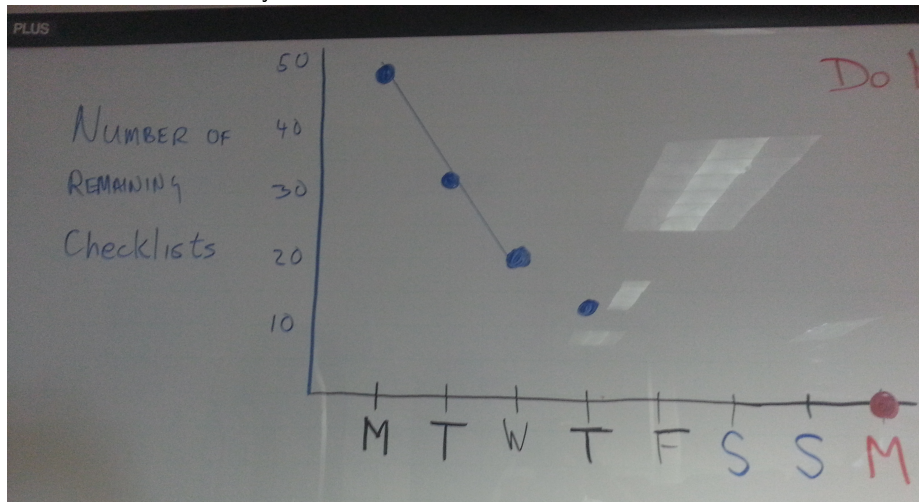
Status as of 14:35 today:

- Not an Interlock Bypass: 3 Clarified by system owners as not an interlock bypass
- Put into ABIL: 7 System owner has confirmed the existence of the jumper and entered the interlock jumper into the ABIL system.
- Removed: 14 Jumper was no longer needed (obsolete element, or other reason) and was removed.
- Turned into ECO: 5 Jumper was made permanent via Engineering Change Order, drawings have been updated.
- Sum: 29 100% !!!

HCO Preparedness

- HCO tool has 101 out of the 109 required checklist published
- 8 checklists remain to be written

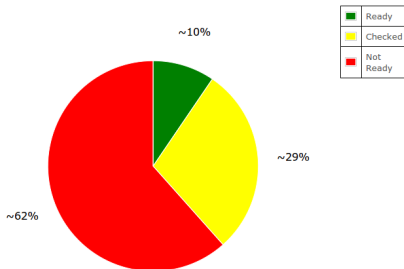
Status as of noon today:



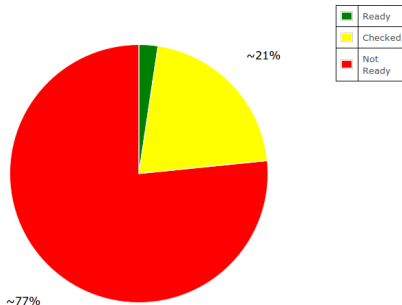
HCO Tool Status

- QA of CEBAF Element Database (CED) near completion, geographical review close out is tomorrow.
 - ▶ **Every** element that appears on the Eng. Tunnel drawings (aka SongSheets) has been compared to the content of the **Tunnel** and the **database**
 - ▶ Once review process is completed tomorrow, OPS views the CED database as the primary CEBAF configuration oracle.
- Web interface appears to be 100% functional, no issue from this user except the disdain of pie-charts.

HCO Status for beam to 500keV Dump:



HCO Status for beam to 2R Dumplette:



HCO Officially starts Monday 2013-Sep-30

Establishing Operations

- Role of the Program Deputy has resumed (2013-Sep-25)
 - ▶ Run 8am MCC meetings
 - ▶ Sets goals and drives the program.
- 1:30 Wed Scheduling meetings have resumed: 2013-Sep-25
- 7:45 meetings will resume 2013-Sep-30 Mon
- HCO has priority over non-AccI installation activities

	WED 9/25	THUR 9/26	FRI 9/27	SAT 9/28	SUN 9/29	MON 9/30	TUES 10/1
OWL	20 Checklists REMAINING						
DAY	(FM) HCO (PMA) HCO	Z410 Cool Down → → 2K Pump Down				HCO BEGINS (INST) LCW HCO CHL to 4K INS Lasers on	
SWING	SRF COMMISSIONING SL22+26 (24) RE OPTIMIZATION HL VL02-M 12 Testing						
BEAMSTU	TOUR - Gov Teachers 3-4:30	TOUR - Deputy M&E Ridge Site office 12:30-2:30				TOUR - NN City Mgr. 2-5	Z410 FILL



Strains and Stresses: No more than usual

