

SoLID Magnet Controls System Meeting Minutes

Date: October 26, 2022

Time: 11:00 – 12:00

Attendees: Peter Bonneau, Aaron Brown, Pablo Campero, Brian Eng, Steven Lassiter, Mindy Leffel, Tyler Lemon, and Marc McMullen

1. HMI screens development

Pablo Campero

1. Completed modifications of *Radial & Axial Supports – Expert* screen
 - Added inputs for high and low limits for Warning and Slow Ramp Down thresholds for each axial and radial support sensor; labelled limits columns
 - Changed header text from Fast Dump Threshold to Slow Ramp Down Threshold
 - Successfully tested

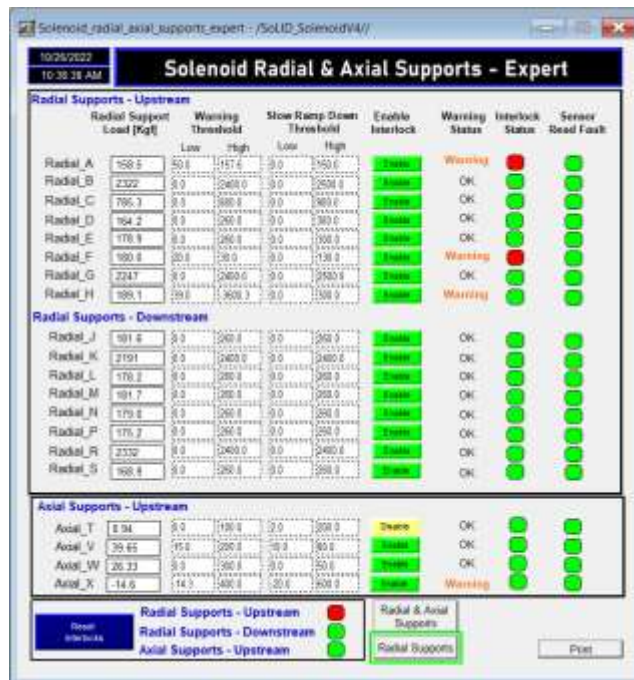


Fig.1. Solenoid Radial & Axial Support – Expert screen

2. PLC Programming

Pablo Campero

1. Completed modifications of PLC code to monitor axial and radial supports' sensors
 - Created add-on routine to compare each load sensor readout against warning limits
 - Created add-on routine to compare each load sensor readout against interlock limits
 - Added PLC tags to allow input of the high and low limits
 - Added add-on routines to main PLC logic
2. Added code to generate slow ramp down when radial or axial support sensors are out of set limits

3. Power supply current readout

Pablo Campero and Brian Eng

1. Ordered a possible power supply connector
 - Dimensions of connector were based on measurements of the power supply connector

4. Voltage tap cable from voltage tap to resistor box

DSG

1. Received five 10-pin connectors for the turret flange on October 26
2. Connector pin-out is in progress

5. Turret wiring

Brian Eng and Mindy Leffel

1. Completed reconnection of all six connectors at the turret flange
 - Flanges are currently covered with foam to protect the pins
 - Need threaded bolt rods to reattach the feedthrough. Whit Seay has the rods.