

PART NUMBER	REV	NO. OFF	DESCRIPTION	REMARKS	MATL	QUANTITY PER ASSEMBLY
-------------	-----	---------	-------------	---------	------	-----------------------

THIRD ANGLE PROJECTION

WIRE COLOUR CODES FOR BS MULTICORE SHIELDED CABLES

1	RED
2	BLUE
3	GREEN
4	YELLOW
5	WHITE
6	BLACK
7	BROWN
8	VIOLET
9	PINK
10	TEAL
11	TURQUOISE
12	GREY
13	RED/BLUE
14	GREEN/RED
15	YELLOW/RED

CLSCC FUSE SCHEDULE

TERMINAL N°	TYPE	RATING	SIZE	SUPPLIER
37	HBC ANTI-SURGE	10A	1/4" x 1/4"	RS 414-001
38, 39, 41, 43, 73, 74, 88	—	630mA	—	RS 414-409
60	—	3.15A	—	RS 414-043
71, 72	—	2.0A	—	RS 414-033
86, 87	—	5.0A	—	RS 414-055
89, 90, 88	—	1.0A	—	RS 414-027

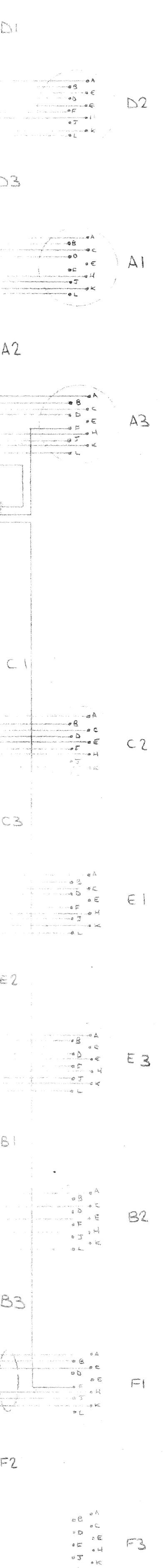
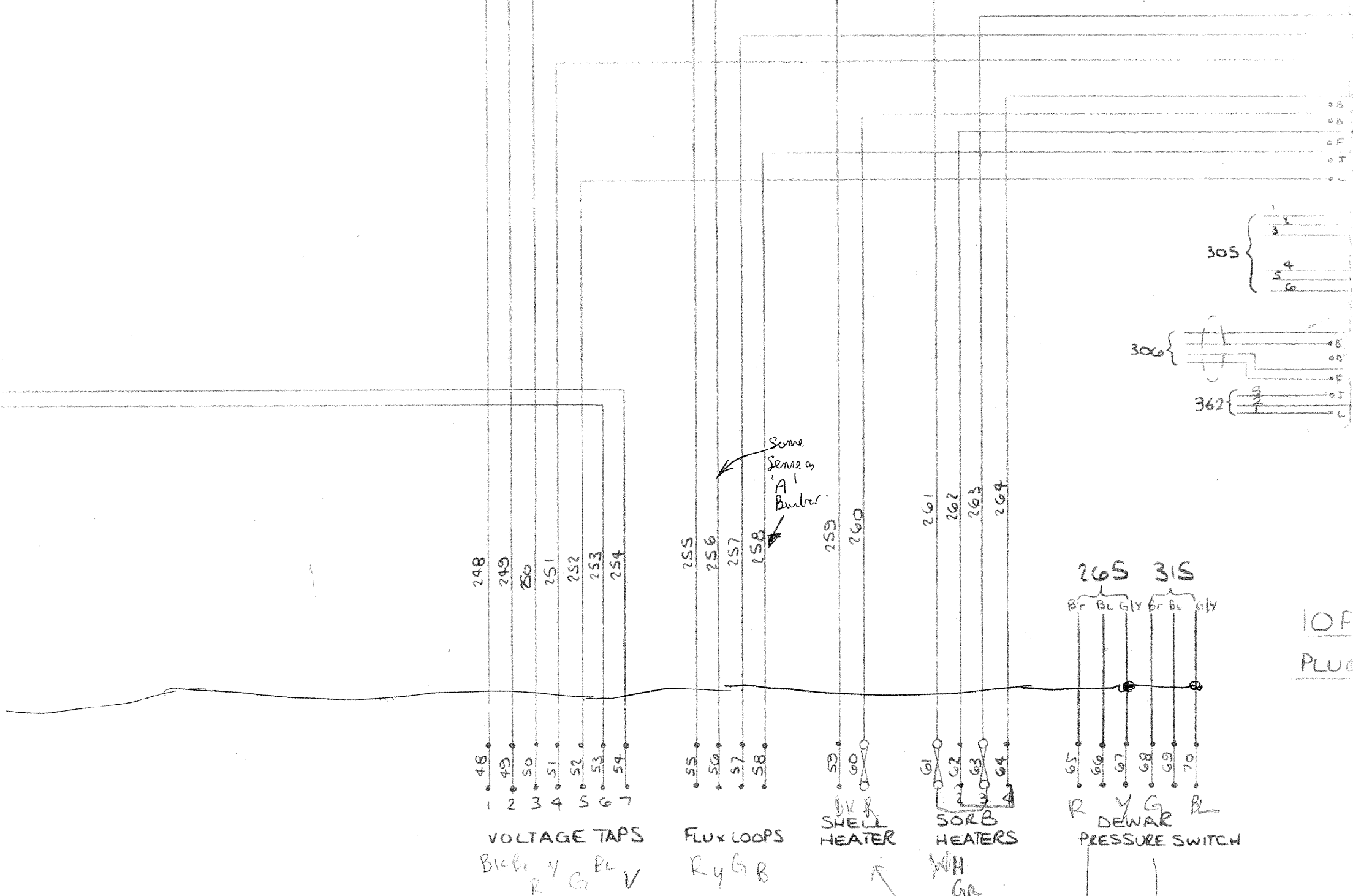
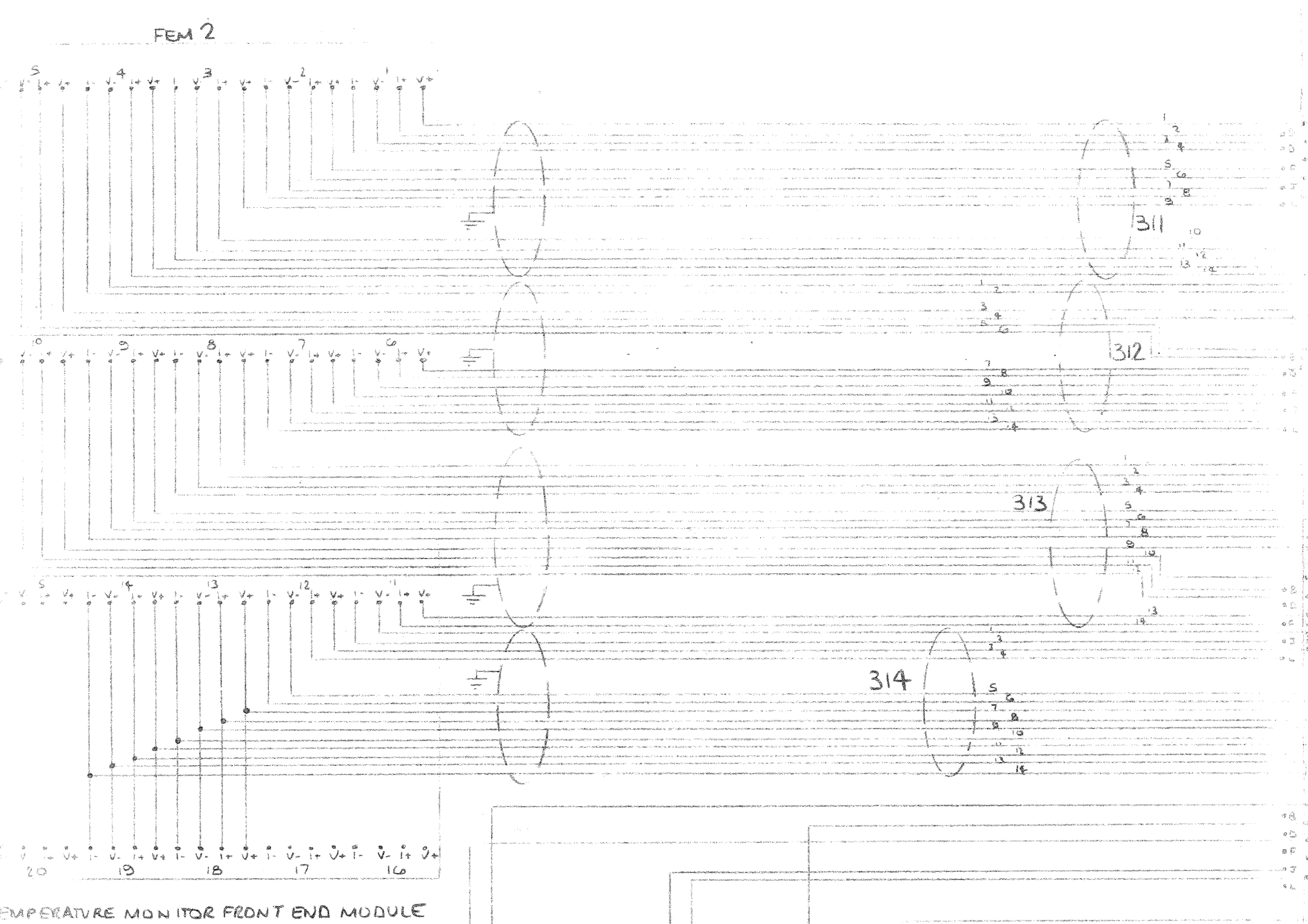
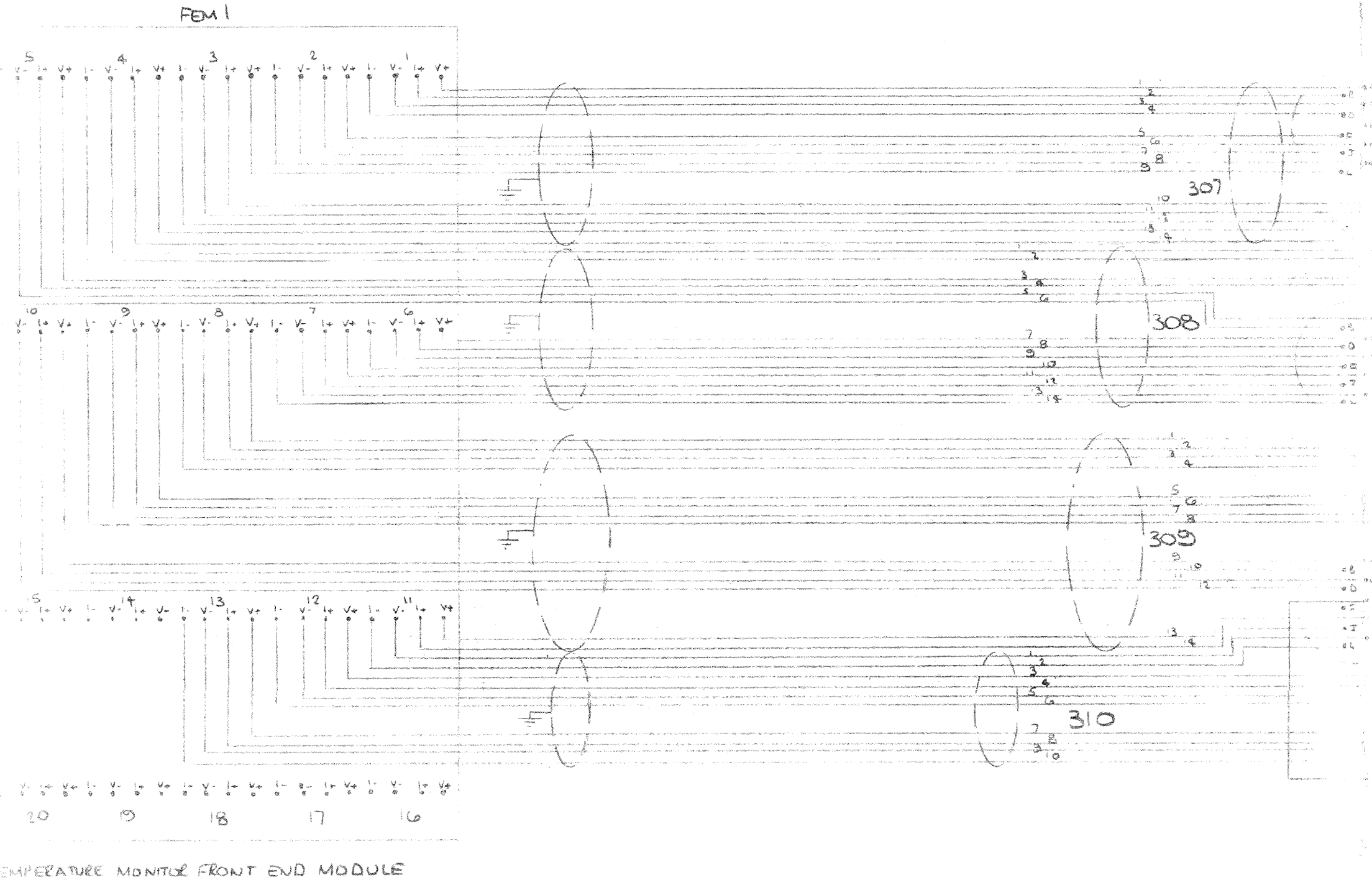
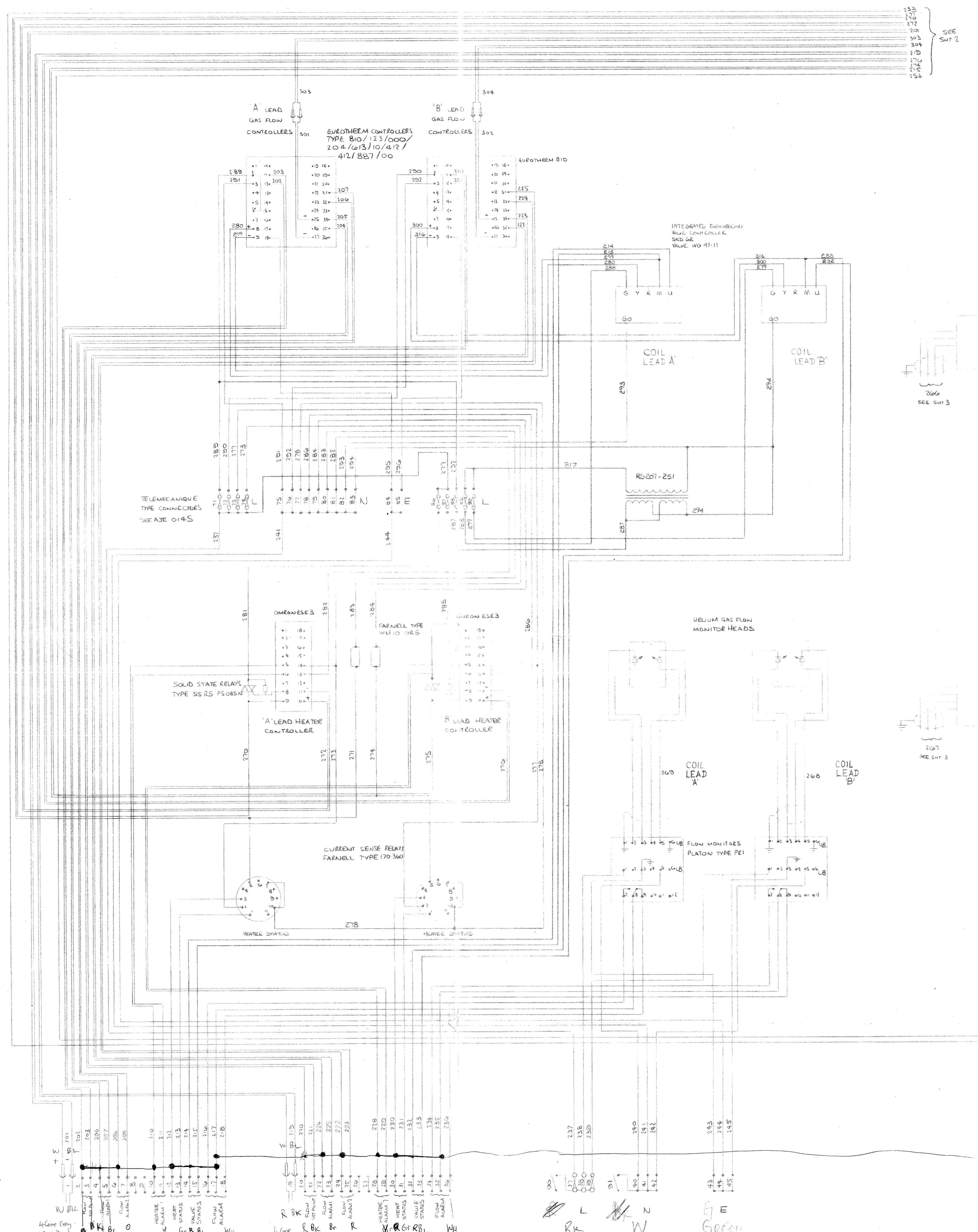
MCC FUSE SCHEDULE

TERMINAL N°	TYPE	RATING	SIZE	SUPPLIER
15	HBC ANTI-SURGE	2A	1/4" x 1/4"	RS 414-033
16	—	3.15A	—	RS 414-043
14	—	10A	—	RS 414-061
17, 18	—	1A	—	RS 414-027

WIRING SCHEDULE

WIRE N°	TYPE	CONFIGURATION	SUPPLIER
1 to 9	1/16" SILVER PLATED COPPER PTFE INSULATED	SINGLE WIRE	01 EWS 0200 to 0209
10 to 12	—	2 TWISTED WIRES	—
13 to 34	—	4 TWISTED WIRES	—
50 to 76	1/16" SILVER PLATED COPPER PTFE INSULATED	4 TWISTED WIRES	HABIA TYPE MET 3001 EXCEPT GREEN & ORANGE WHICH ARE MET 2507
77, 78 to 81, 83, 85, 86, 90, 91, 96, 104, 107, 108	—	SINGLE WIRE	—
92, 93	—	3 TWISTED WIRES	—
94, 95	—	2 TWISTED WIRES	—
87, 84, 87, 83	34SWG PVA ENAMELLED	SINGLE WIRE	RENT ELECTRIC WIRE CO
78, 88, 105, 106	28SWG PVA ENAMELLED	SINGLE WIRE	—
301, 302, 303, 304	TYPE T THERMOCOUPLE WIRE	TWIN WIRE	EUTHERM
207 to 218, 220, 226, 236, 238, 239, 240, 241, 243, 245, 248 to 254, 273, 277 to 280, 281, 286 to 300, 305 to 317	24/02" PVC INSULATED	SINGLE WIRE	BS COLOUR CODED IN ACCORDANCE WITH FUNCTION WITH FUNCTION
237, 241, 244	30/15" PVC INSULATED	SINGLE WIRE	—
265, 315	24/02" PVC INSULATED	3 CORE	01 FWM 0603
270, 271, 274, 275, 281, 283, 284, 285	32/02" PVC INSULATED	SINGLE WIRE	BS COLOUR CODED IN ACCORDANCE WITH FUNCTION
307 to 314	1/16" 15 CORE SCREENED	1 CABLE	RS 367-404
305, 355	6 CORE SCREENED	1 CABLE	RS 367-369
359, 361, 362	4 CORE SCREENED	1 CABLE	RS 367-347
266, 267	4 CORE SCREENED	1 CABLE	RELIANCE TYPE H8130
268, 269	4 CORE SCREENED	1 CABLE	PLATONJ
277, 276	TYPE K THERMOCOUPLE WIRE	TWIN WIRE	OMRON
351	MULTICORE SCREENED	CABLE	DOEIC
321, 353, 354, 351, 360	3 CORE MAINS LEAD	INTEGRAL IEC PLUG	VARIOUS
356	4 CORE	—	A. S. SCIENTIFIC
358	4 CORE	—	CORNELL UNIVERSITY
306	4 CORE	—	—

WIRE NUMBERS USED ON THIS SHEET 201 - 317  
SPARE WIRE NUMBERS FOR THIS SHEET 318 - 350



DRAWING NUMBER  
AJE1005  
SHEET 1 OF 3

FIRST ISSUE  
85015  
CURRENT ISSUE

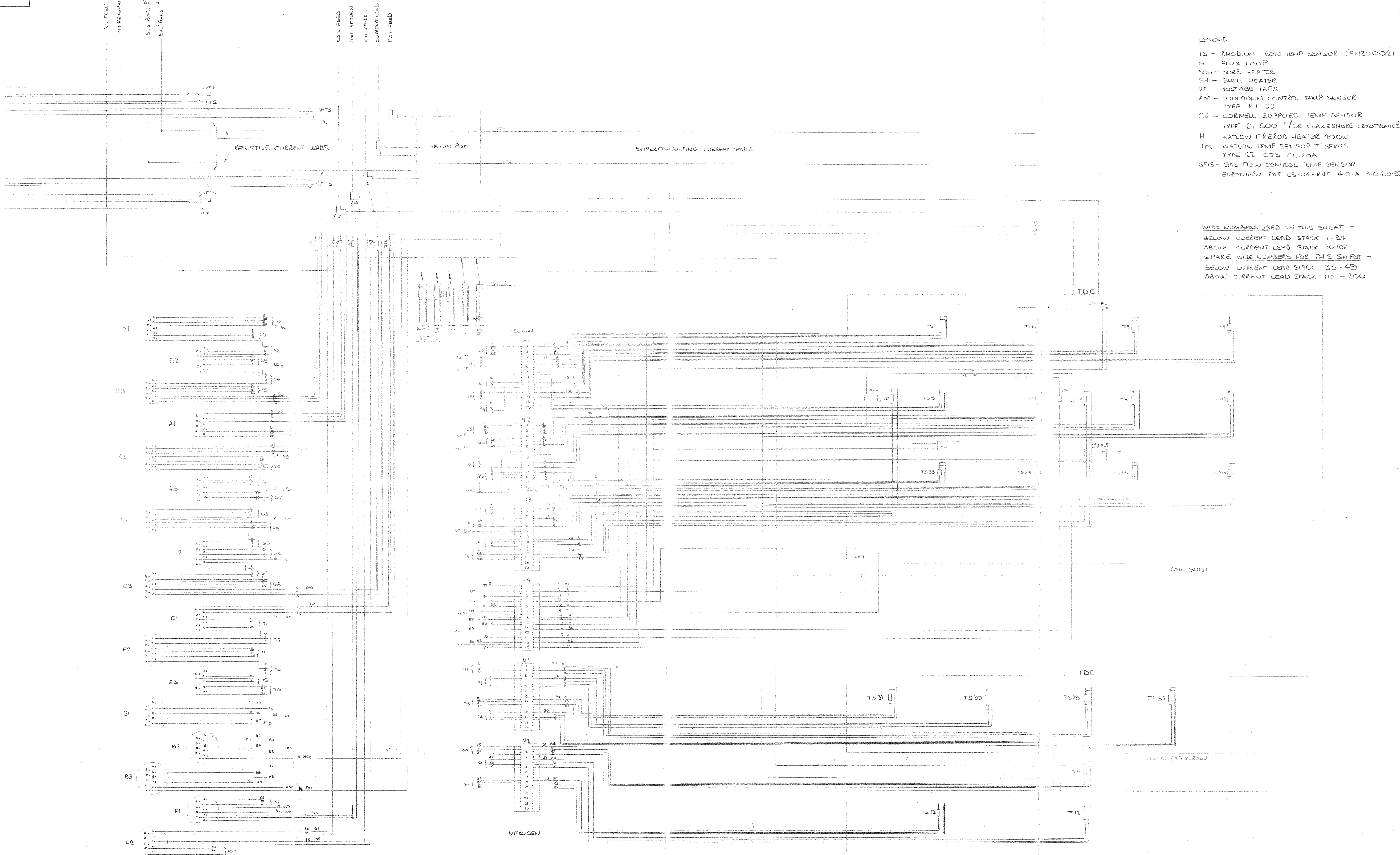
ISSUE	DATE	CHANGE NO.	ISSUE DATE	CHANGE NO.
D	27.8.87	003		
C	30.4.87	002		
B	21.1.87	001		
A	28.2.84	000		

TOLERANCES			TITLE	
METRIC	IMPERIAL		CUE 2 WIRING DIAGRAM	
X ± 0.05	XX ± 0.015		CURRENT LEAD CONTROL CASE	
XX ± 0.03	XXX ± 0.010			
XXX ± 0.1	XXXX ± 0.008			

DRN	CHKD	APPD	DIMENSION'S IN	TITLE
LAG	K.E.S		—	CUE 2 WIRING DIAGRAM
DATE	DATE	DATE	SCALE	
24.11.86	22.11.87		—	

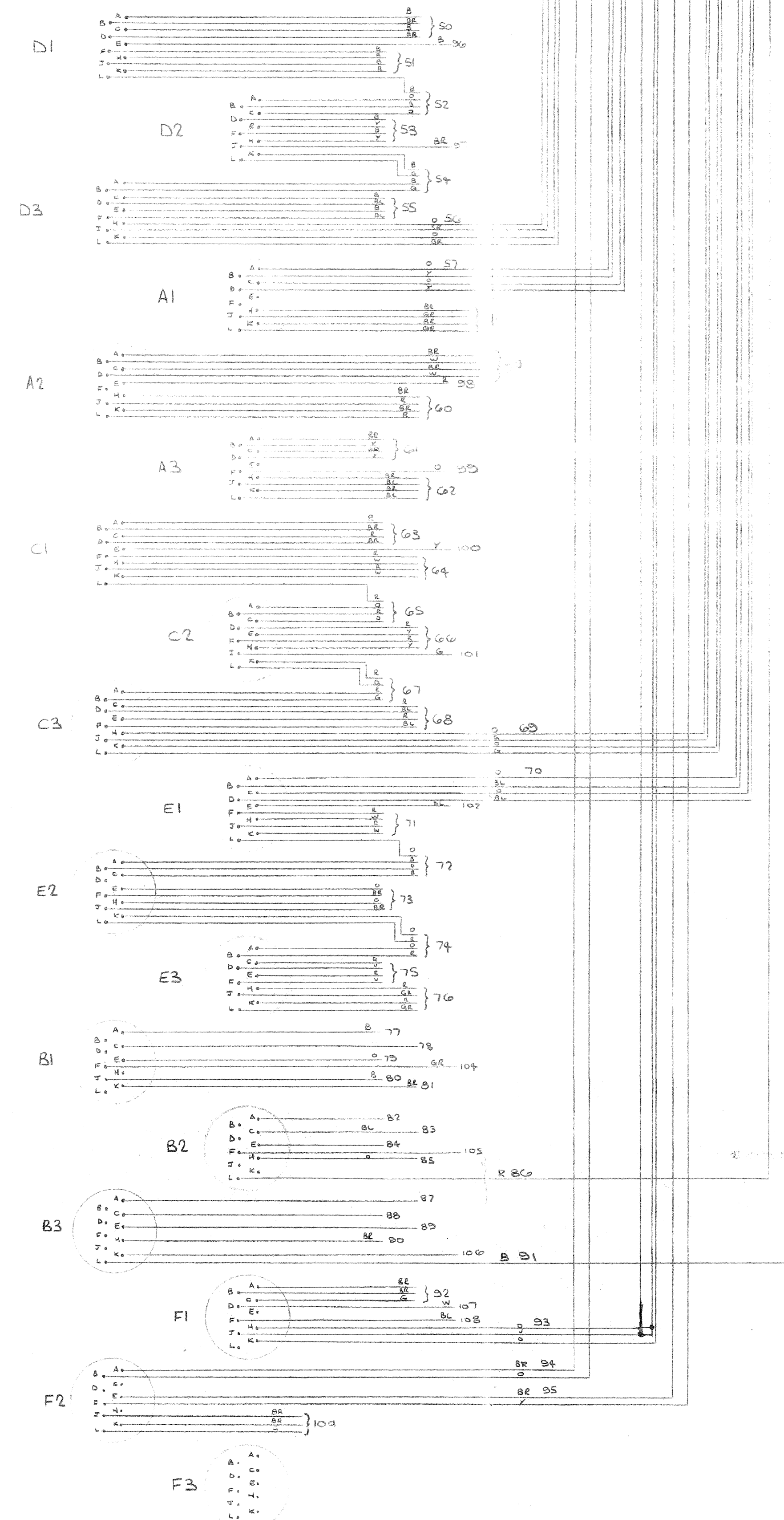
OXFORD  
Oxford Instruments Limited  
Osney Mead  
Oxford OX2 0DX  
England

DRAWING NUMBER  
AJE 1005  
SHEET 1 OF 3



- LEGEND
- TS - RHODIUM ION TEMP SENSOR (PH20002)
  - FL - FLUX LOOP
  - SH - SORB HEATER
  - SH - SHELL HEATER
  - VT - VOLTAGE TAPS
  - AST - COOLDOWN CONTROL TEMP SENSOR TYPE PT 100
  - CU - CORNELL SUPPLIED TEMP SENSOR TYPE DT 500 P/GR (LAKESHORE CRYOTRONICS)
  - H - WATLOW FIREROD HEATER 400W
  - HTS - WATLOW TEMP SENSOR J SERIES TYPE 22 CTS PL120A
  - GFTS - GAS FLOW CONTROL TEMP SENSOR EUROTERM TYPE LS-04-RVC-4.0 A-3.0-210-95

WIRE NUMBERS USED ON THIS SHEET -  
 BELOW CURRENT LEAD STACK 1-34  
 ABOVE CURRENT LEAD STACK 50-108  
 SPARE WIRE NUMBERS FOR THIS SHEET -  
 BELOW CURRENT LEAD STACK 35-49  
 ABOVE CURRENT LEAD STACK 110-200



10 PIN VACUUM FEEDTHROUGH SOCKETS  
(PIN ARRANGEMENT SCHEMATIC ONLY)

25 PIN 'D' CONNECTORS  
 SKT TYPE RS 466-770  
 PLUG TYPE RS 466-151  
 COVER TYPE RS 467-700

TOLERANCES			TITLE	
METRIC	IMPERIAL		CLEO 2 WIRING DIAGRAM	
X ± 0.5	XX ± 0.015		CURRENT LEAD STACK, COIL & RAD SCREENS	
XX ± 0.3	XXX ± 0.010			
XXX ± 0.1	XXXX ± 0.005			
DRN	CHKD	APPD	DIMENSION IN	THIS DRAWING BELONGS TO OXFORD INSTRUMENTS LIMITED AND IS ISSUED ON THE CONDITION THAT IT IS NOT COPIED, REPRINTED OR IN PART TO A THIRD PARTY WITHOUT THE CONSENT IN WRITING OF OXFORD INSTRUMENTS LIMITED.
RA G	K B S		—	
DATE	DATE	DATE	SCALE	
23.11.86	23/11/87		—	

**OXFORD**  
 Oxford Instruments Limited  
 Osney Mead  
 Oxford OX2 0DX  
 England

DRAWING NUMBER  
AJE1005  
SHEET 2 OF 3

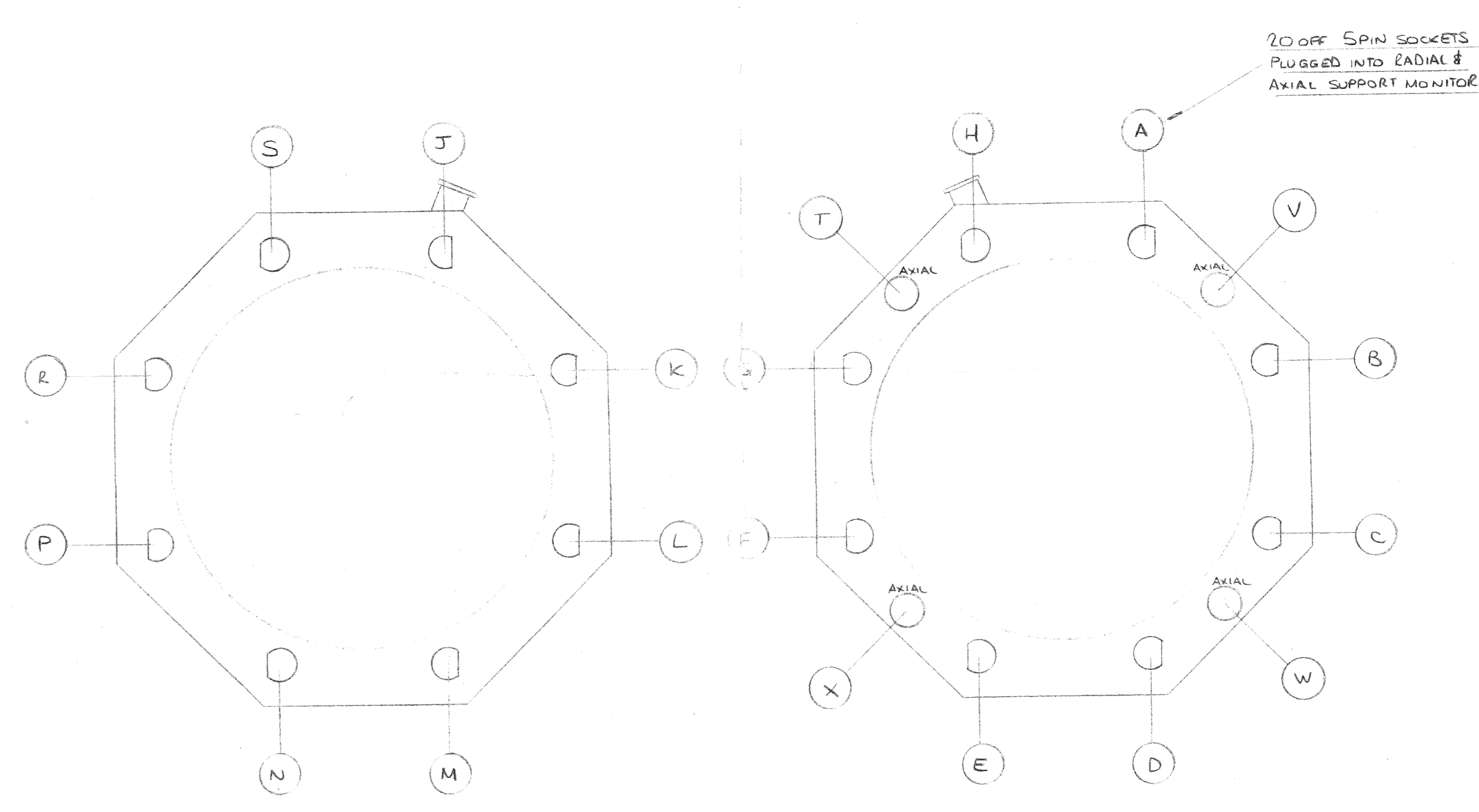
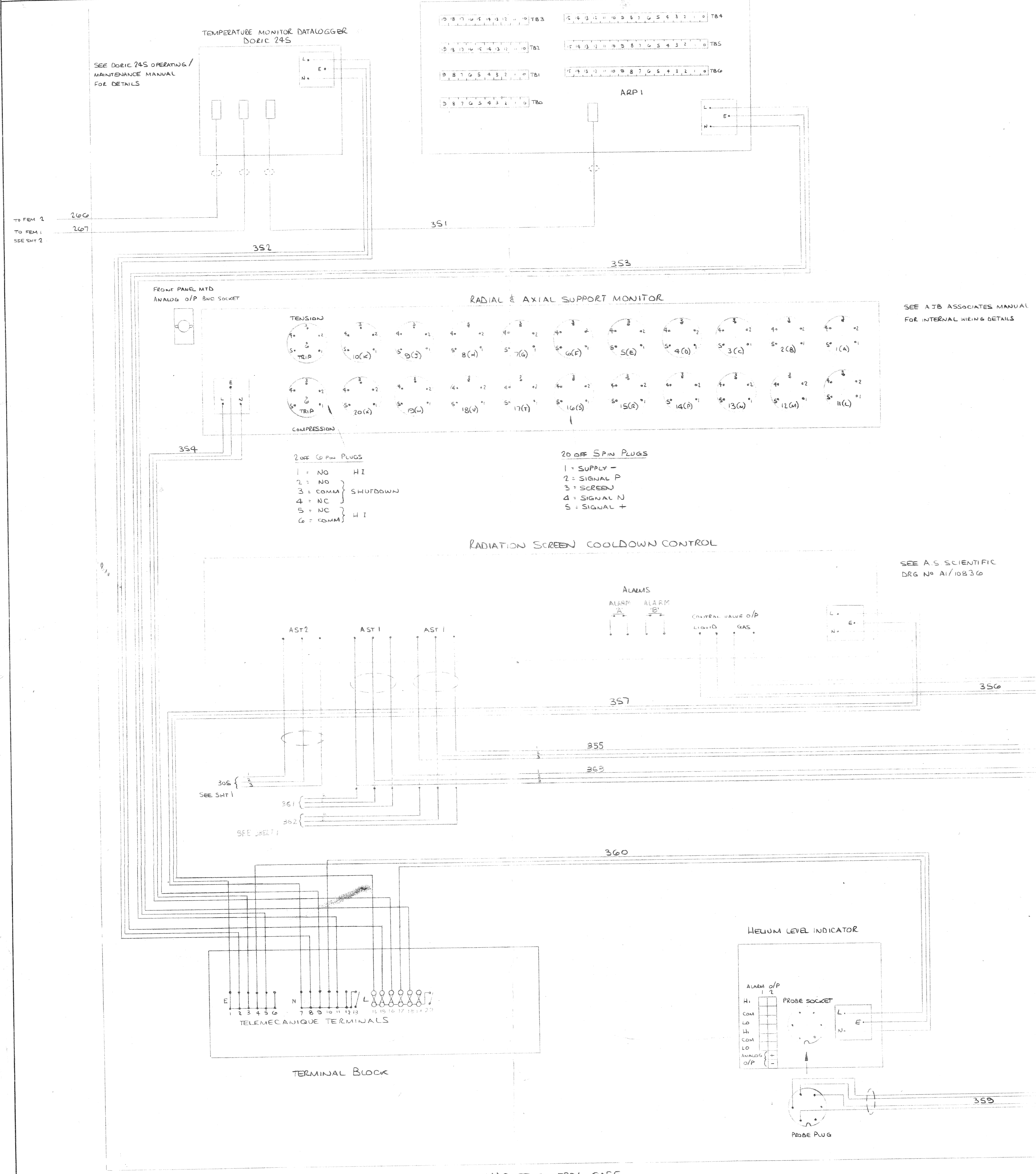
ISSUE	DATE	CHANGE NO.	ISSUE	DATE	CHANGE NO.	ISSUE	DATE	CHANGE NO.
C	28.11.86	002						
B	11.11.87	001						
A	18.11.86	000						

PART NUMBER	ITEM NO.	QTY	DESCRIPTION	REMARKS	MAT'L	QUANTITY PER ASSEMBLY
-------------	----------	-----	-------------	---------	-------	-----------------------

THIRD ANGLE PROJECTION

DRAWING NUMBER  
AJE 1005  
SHEET 3 OF 3

FIRST ISSUE  
85015  
CURRENT ISSUE



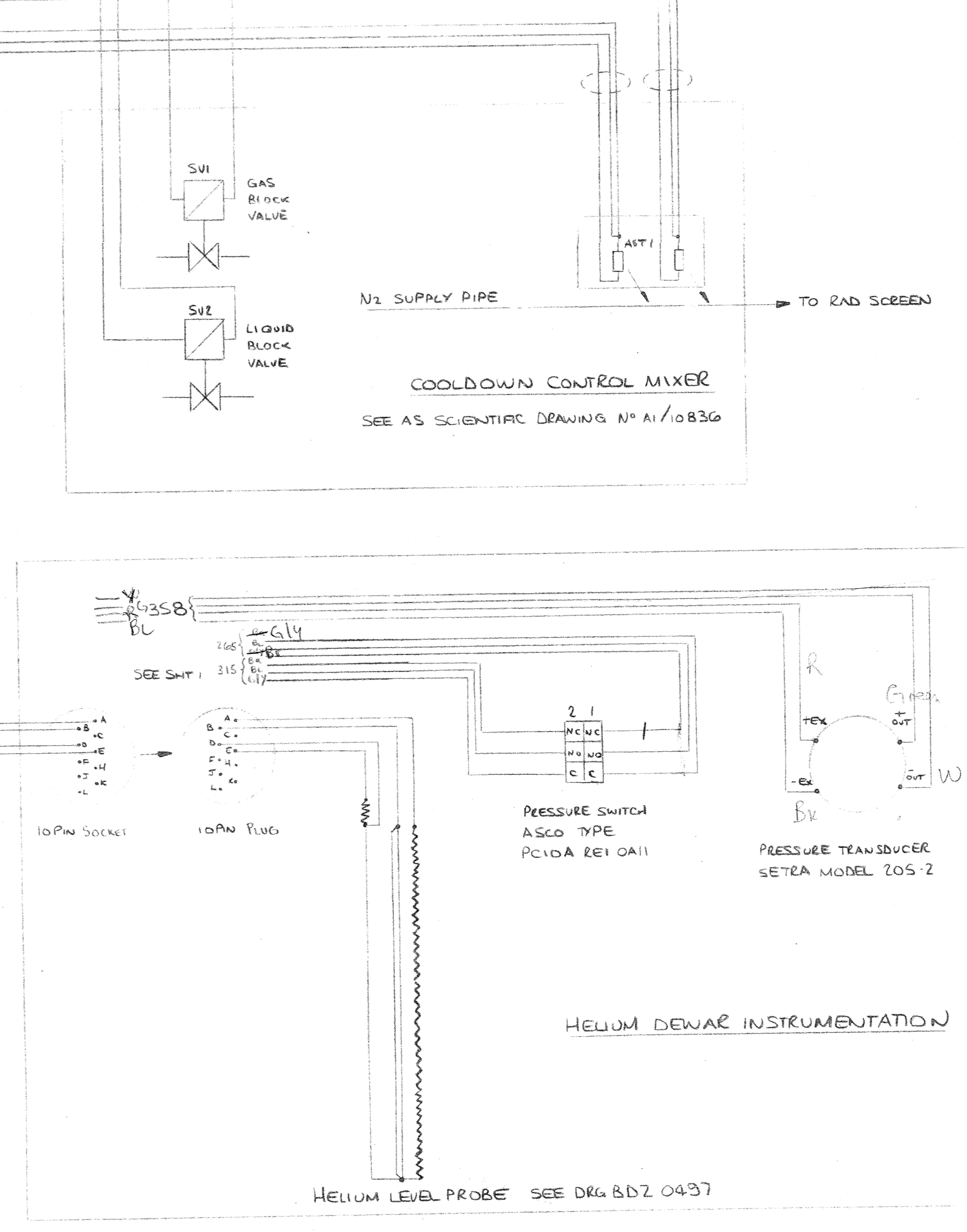
20 OFF SPIN SOCKETS  
PLUGGED INTO RADIAL &  
AXIAL SUPPORT MONITOR

WEST END OF YOKE

EAST END OF YOKE  
(NEAREST TO NECK END)

RADIAL & AXIAL SUPPORT POSITIONS

WIRE NUMBERS USED ON THIS SHEET 351-360  
SPARE WIRE NUMBERS FOR THIS SHEET 364



HELIUM DEWAR INSTRUMENTATION

HELIUM LEVEL PROBE SEE DRG 82.0437

ISSUE	DATE	CHANGE No.	ISSUE	DATE	CHANGE No.
C	26.8.77	002			
B	11.1.77	001			
A	16.1.76	000			

TOLERANCES			TITLE		
METRIC	X	+ 0.5	IMPERIAL	XX	+ 0.05
	XX	+ 0.3		XXX	+ 0.10
	XXX	+ 0.1		XXXX	+ 0.05

CLEO 2 WIRING DIAGRAM  
MAGNET CONTROL CASE

DRN	CHKD	APPD	DIMENSIONS IN
RAC	KOS		
DATE	DATE	DATE	SCALE
14.12.86	23.1.87		

THIS DRAWING BELONGS TO OXFORD INSTRUMENTS LIMITED AND IS ISSUED ON CONDITION THAT IT IS NOT COPIED, REPRINTED OR DISCLOSED EITHER IN WHOLE OR IN PART TO A THIRD PARTY WITHOUT THE CONSENT IN WRITING OF OXFORD INSTRUMENTS LIMITED.

**OXFORD**  
Oxford Instruments Limited  
Oxney Mead  
Oxford OX2 0DX  
England

DRAWING NUMBER  
AJE 1005  
SHEET 3 OF 3