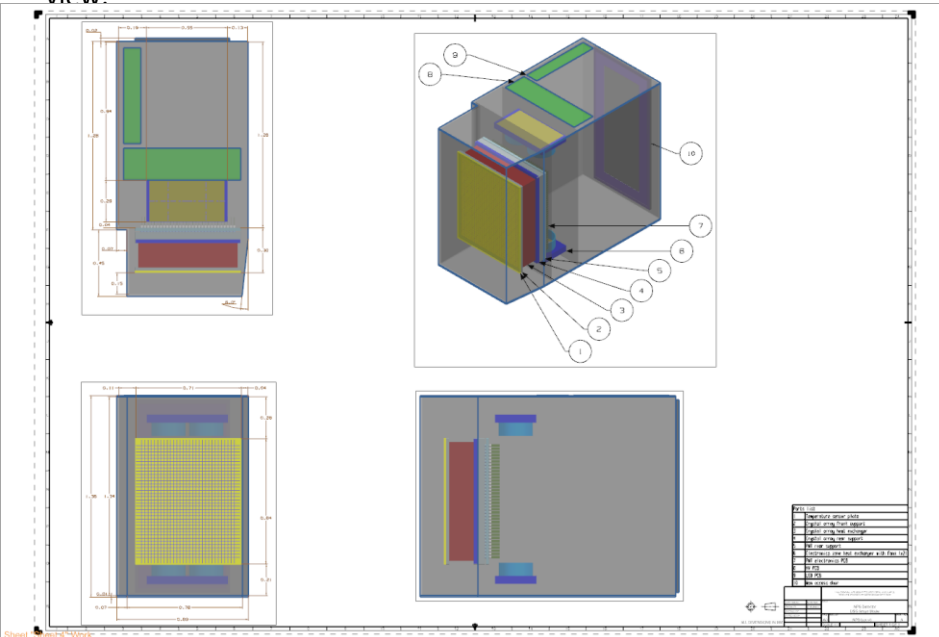


Third-angle projection of the NPS Ansys model in NX12

Marc McMullen
2022-07

Third-angle projection of the NPS Ansys model in NX12

This month I used NX12 to develop a third-angle projection of the NPS Ansys model. The drawing should communicate the dimensions of the model from the front perspective. The front view is placed in the bottom left quadrant of the document. Additionally, the projected top (top left) and right side (bottom right) views are properly aligned based on the front view.

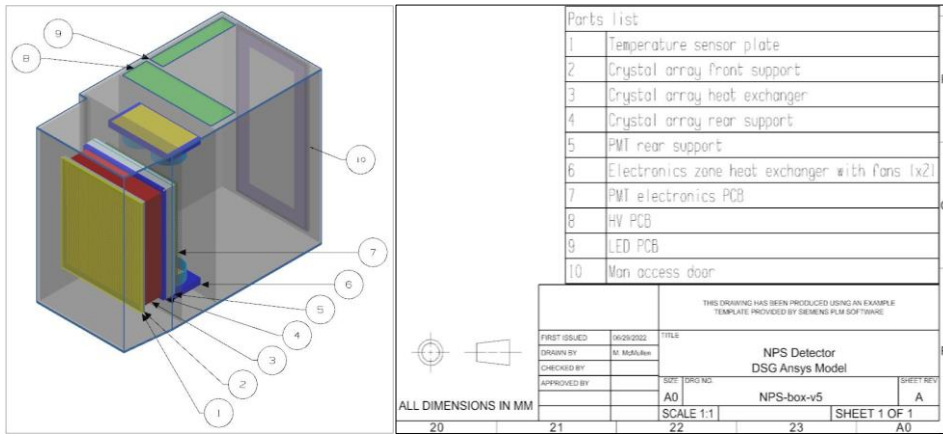


Third-angle projection drawing of the NPS Ansys model

- Develop a third-angle projection of the NPS Ansys model.
- Annotate the drawing and provide a list of the components

Third angle projection of the NPS Ansys model in NX12

The top right quadrant has an isometric view of the detector with numbered annotation balloons to annotate the model parts. A list of the is located above the title block.



Isometric projection (left) next to the parts list

In conclusion, this drawing will provide a visual reference of the model with dimensions and part names. It will give a better sense of the physical location of the components while thermal analysis is conducted.