

JSA/JEFFERSON LAB

CONSTRUCTION CHANGE REQUEST (CCR)

1 Subcontract No: 10-C0162

Date: 7/20/2011

2 Project Title: Technology and Engineering Development Facility Project

3 CCR No: 20

PR No. FTCCL

4 CCR Title: Structural Steel Clarification at the Test Lab Annex

5 Description:

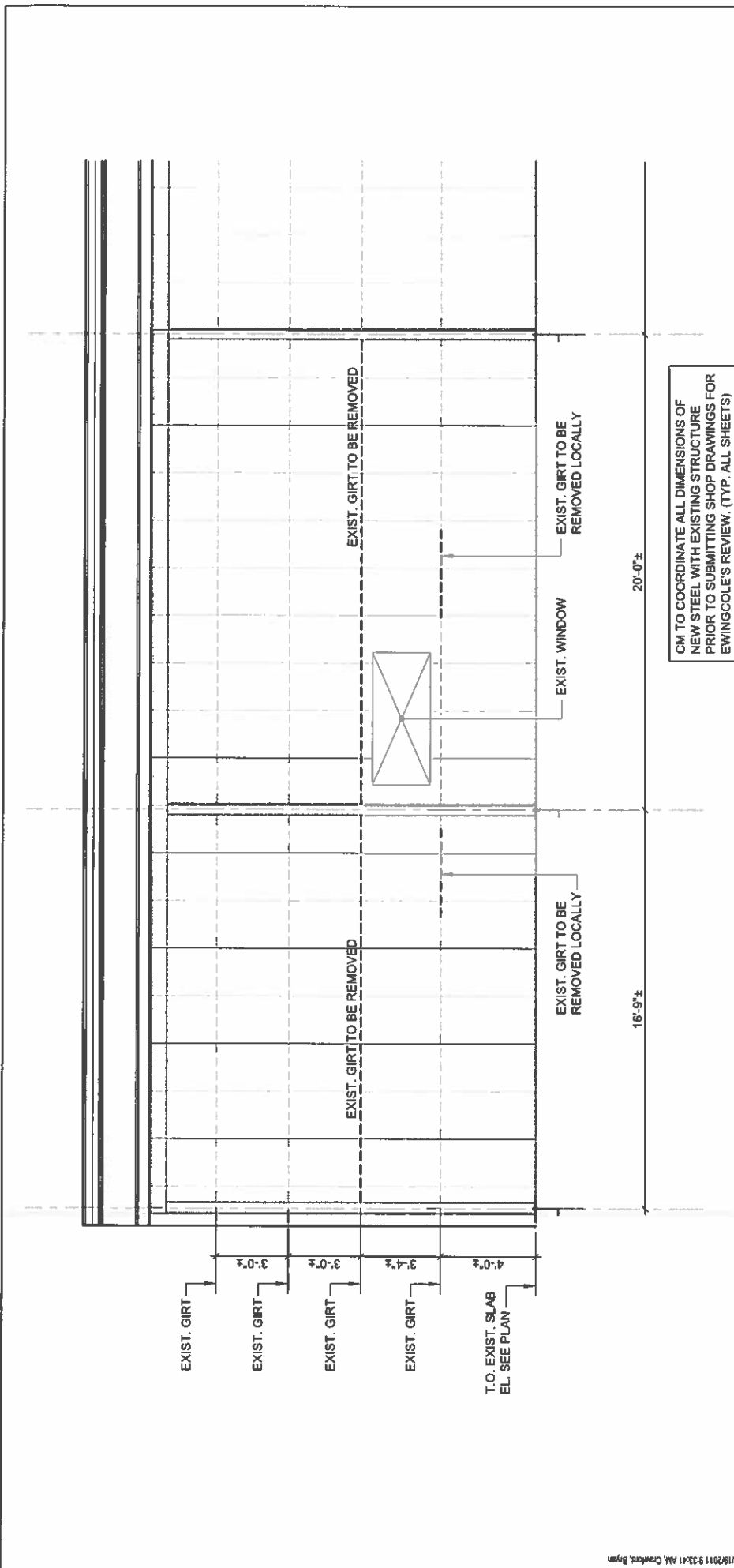
Sketches showing existing conditions on the east and north elevations of the Test Lab annex and clarifications of work associated with the door installation on the north and east elevations of the Test Lab annex

6 Changes in Drawings/Sketches:

CP-S25A – Existing conditions north elevation of the butler building
CP-S25B – Clarification of work associated with install of the door (North elevation)
CP-S25C - Existing conditions east elevation of the butler building
CP-S25D – Clarification of work associated with install of the door (East elevation)

7 Changes in Specifications:

None



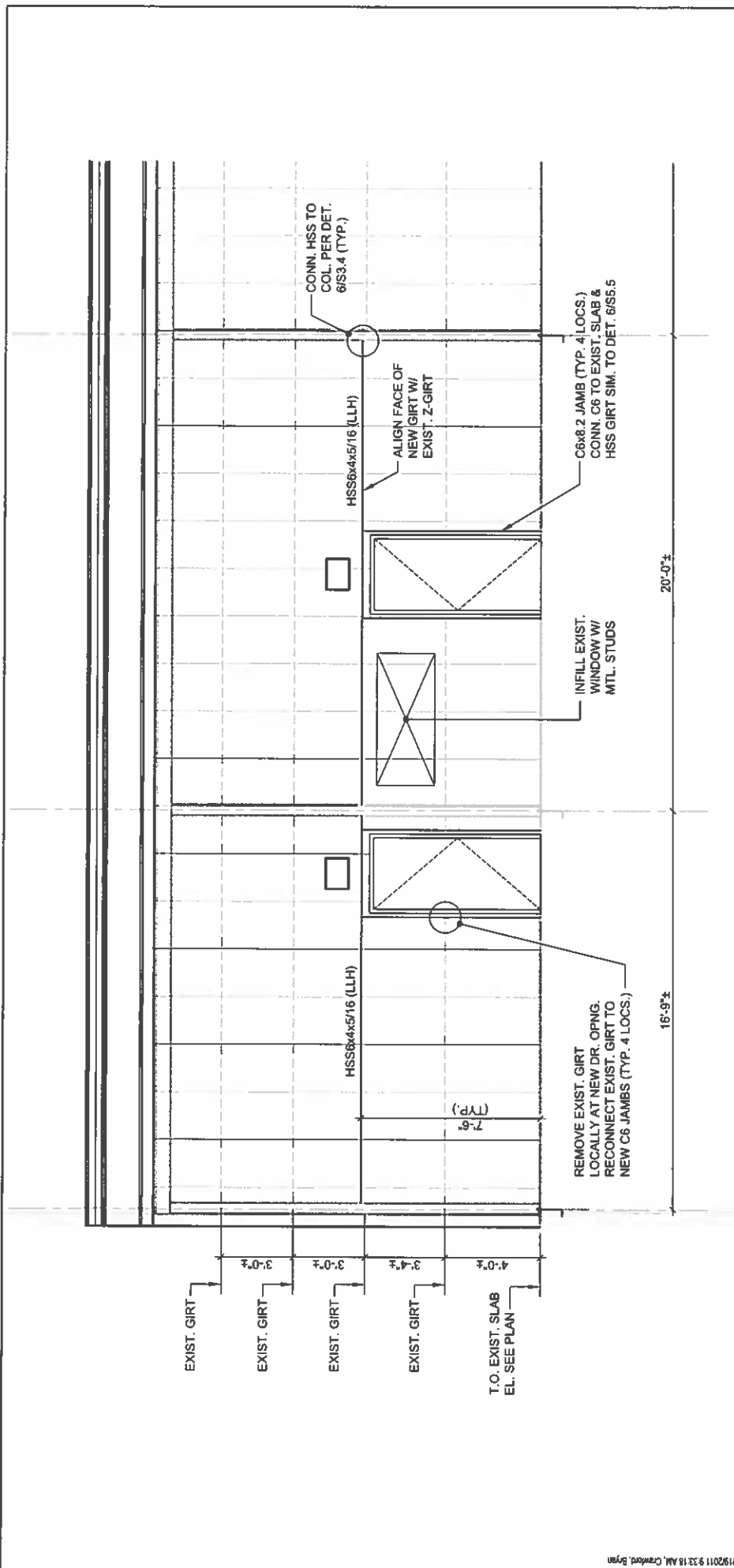
1 BUTLER BUILDING NORTH ELEVATION - EXISTING
 1/4" = 1'-0"

CM TO COORDINATE ALL DIMENSIONS OF NEW STEEL WITH EXISTING STRUCTURE PRIOR TO SUBMITTING SHOP DRAWINGS FOR EWINGCOLE'S REVIEW. (TYP. ALL SHEETS)



PROJECT	TECHNICAL ENGINEERING & DEVELOPMENT FACILITY	DWG. DATE	7-19-11
DRAWING TITLE	BUTLER BUILDING	REF. DWG.	20080400
		SCALE	AS NOTED
		DRAWN BY	BEC
		DRAWING NO.	CP-S25A

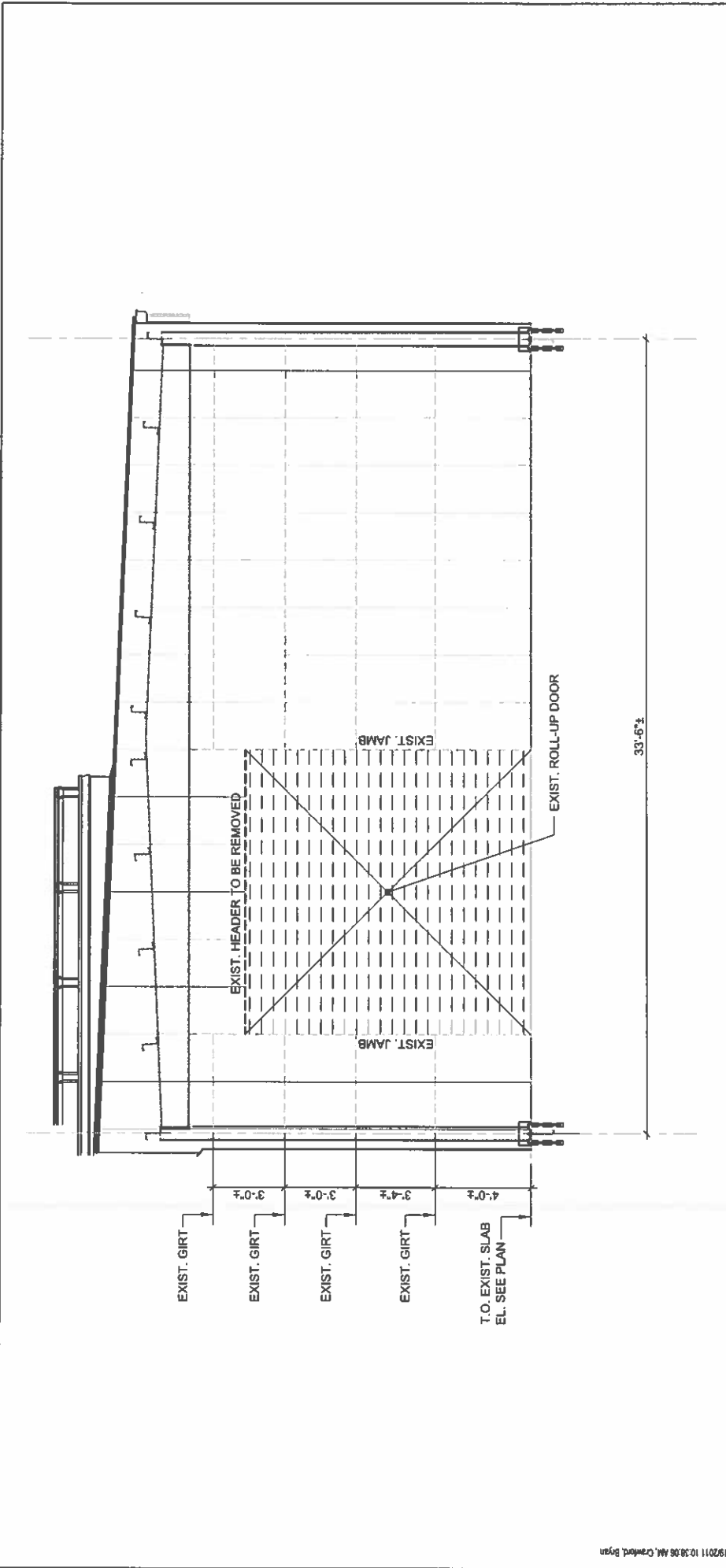
Copyright © 2008 by EWINGCOLE



1 BUTLER BUILDING NORTH ELEVATION - NEW WORK
1/4" = 1'-0"

EWING COLE		PROJECT NO.	20080400	DWG. DATE	7-19-11
TECHNICAL ENGINEERING & DEVELOPMENT FACILITY		REF. DWG.	---	REV. DATE	---
DRAWING TITLE		SCALE	AS NOTED	DRAWING NO.	CP-S25B
BUTLER BUILDING		DWG. BY	BEC		

Copyright © 2009 by EWINGCOLE



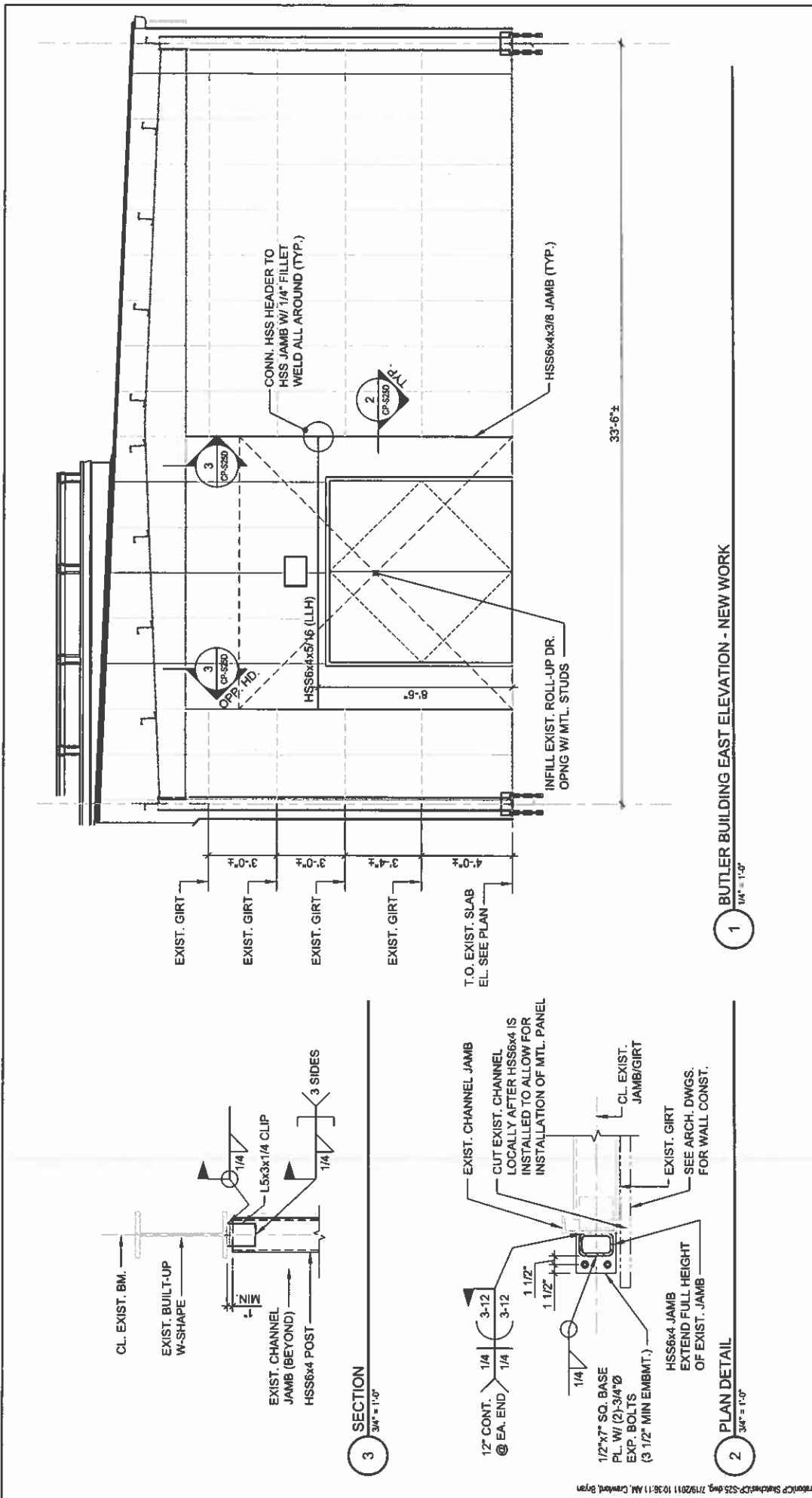
1 BUTLER BUILDING EAST ELEVATION - EXISTING
1/4" = 1'-0"

**EWING
COLE**

PROJECT
TECHNICAL ENGINEERING &
DEVELOPMENT FACILITY
DRAWING TITLE
BUTLER BUILDING

PROJECT NO.	DWG. DATE	DWG. DATE	DWG. NO.
20080400	7-19-11	7-19-11	CP-S25C
REF. DWG.	SCALE	AS NOTED	BY
			BEC

Copyright © 2008 by
EWINGCOLE



1 BUTLER BUILDING EAST ELEVATION - NEW WORK
1/4" = 1'-0"

2 SECTION
3/4" = 1'-0"

3 PLAN DETAIL
3/4" = 1'-0"

PROJECT TECHNICAL ENGINEERING & DEVELOPMENT FACILITY DRAWING TITLE BUTLER BUILDING	PROJECT NO.	DWG. DATE	DWG. NO.
	REF. DWG.	REV. DATE	20080400
	SCALE	AS NOTED	
	DRAWN BY	BEC	
	DRAWING NO.		CP-S25D

**EWING
COLE**

Copyright © 2008 by
EWINGCOLE