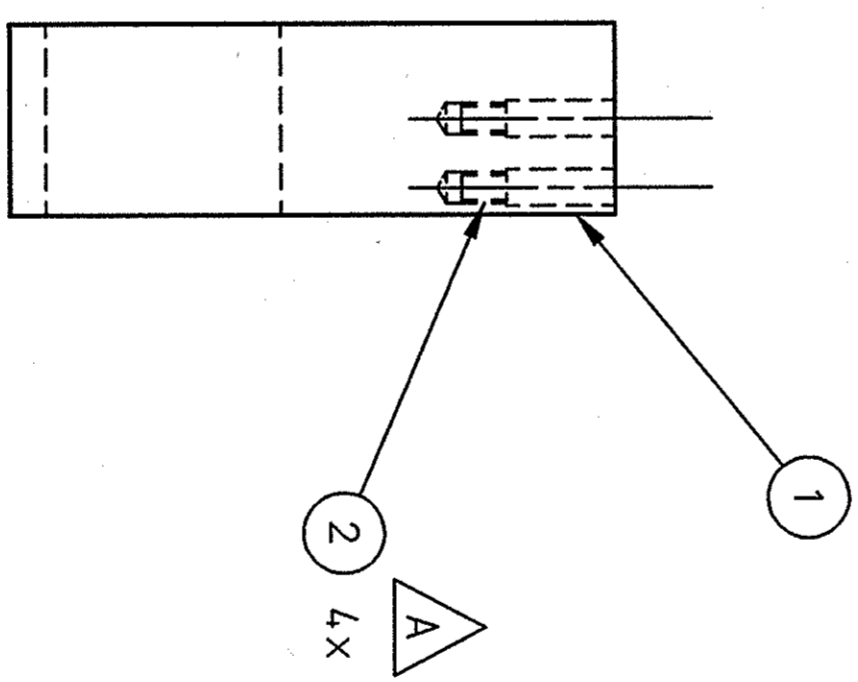
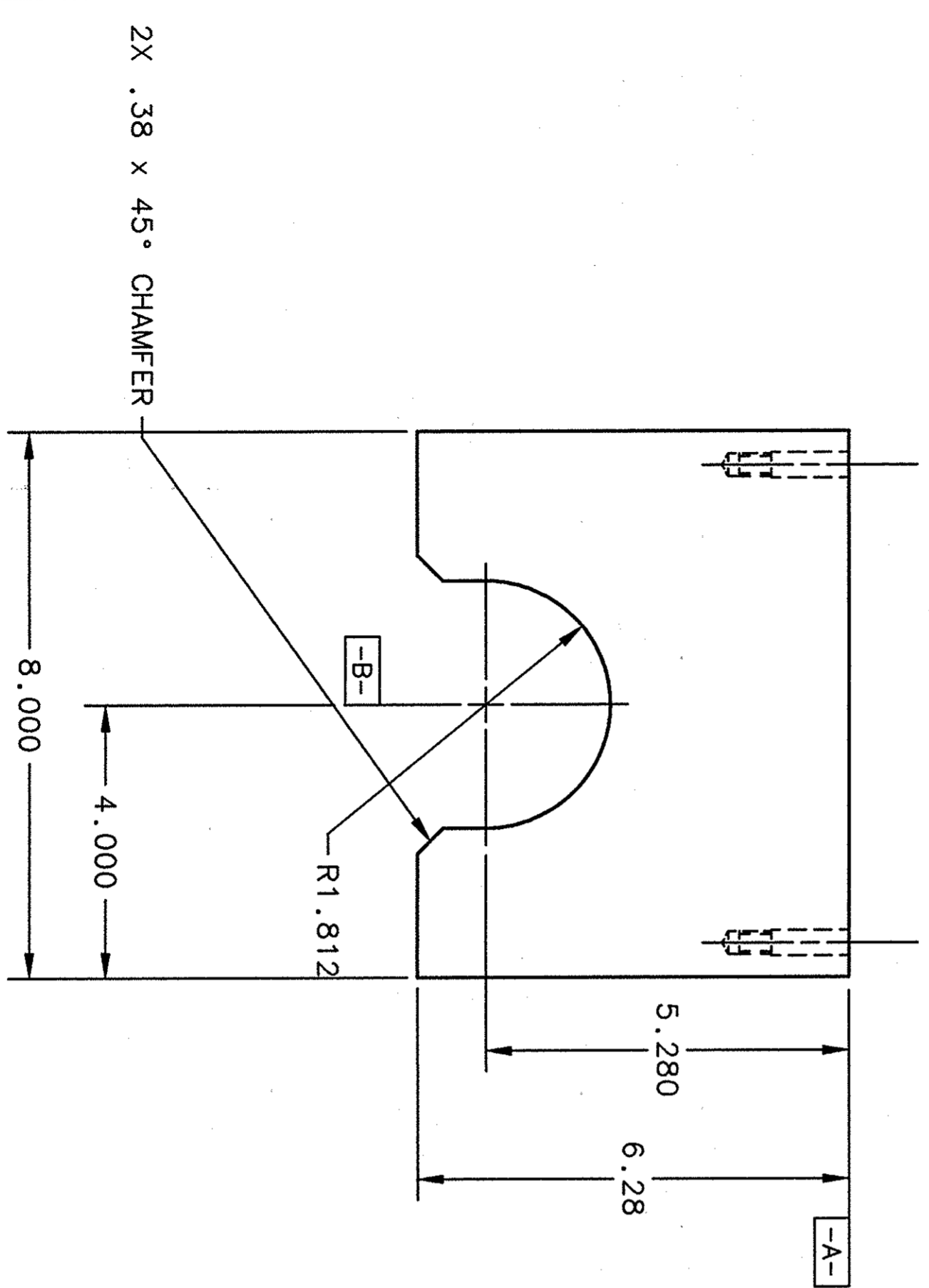
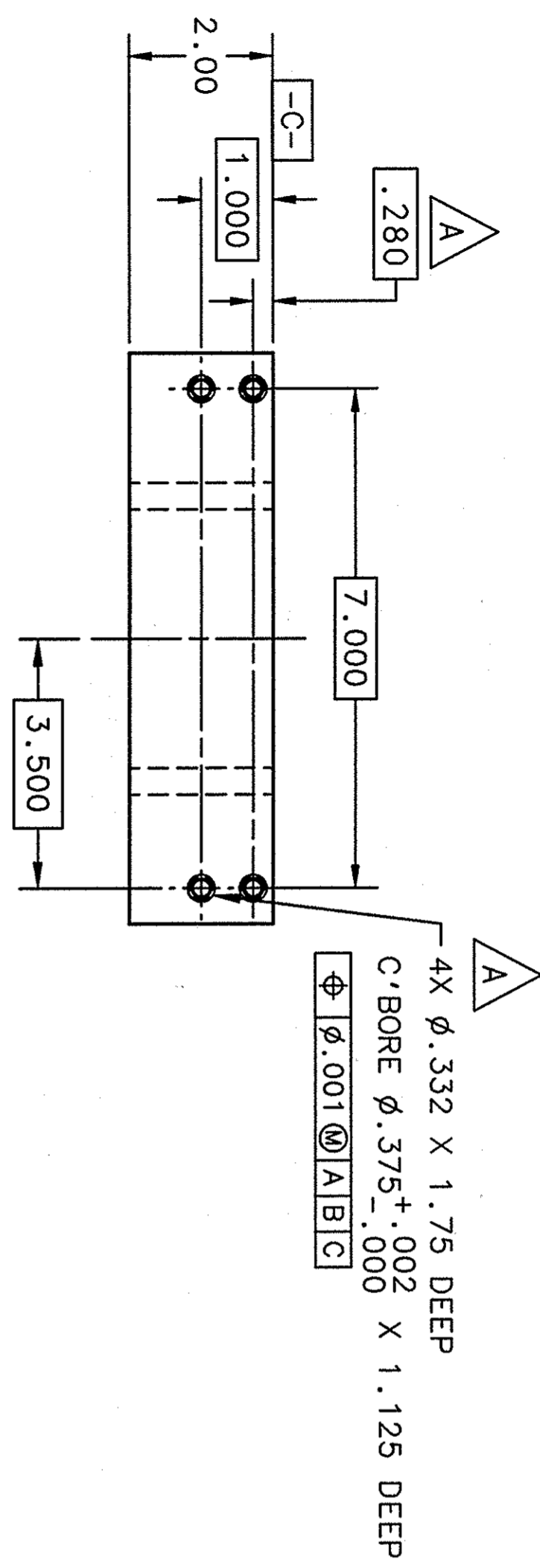
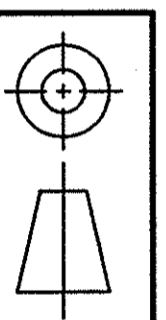


| REVISION HISTORY |     |  |           |
|------------------|-----|--|-----------|
| ZONE             | REV | DESCRIPTION                                  | DATE      |
| VAR              | A   | ADDED LIGHTENING HOLES AND 2 HELICAL INSERTS | 31 May 02 |
|                  |     |  | 12 Jun 02 |
|                  |     |  | 8 Feb     |



NOTE:  
-1 DIMENSION TOLERANCES  
.X ±.1

| QTY | ITEM | PART OR IDENTIFYING NO. | DESCRIPTION OR IDENTIFYING NO. | MATERIAL SPECIFICATION | NOTES |
|-----|------|-------------------------|--------------------------------|------------------------|-------|
| 4   | 2    | McMASTER 91732A213      | 5/16-18 UNC COIL INSERT        | STAINLESS STEEL        |       |
| 1   | 1    |                         | TOP TUBE LOCATOR               | 6061-T6 ALUMINUM       |       |



|   |                                       |   |                 |
|---|---------------------------------------|---|-----------------|
| DIM & TOL PER ANSI Y14.5<br>DIMENSIONS ARE IN INCHES<br>TOLERANCES ARE:<br>FRACTIONS DECIMAL ANGLES<br>.XX ±.01 .XXX ±.005 .50° |                                       | CADD I.D. NO.: 1-DEAS<br>SNS DRAWING NUMBER:<br>104130801-18C-8320-A119-R00 |                 |
| MATERIAL:<br>SEE PARTS LIST   |                                       | APPROVALS:  |                 |
| FINISH: 125 UNLESS OTHERWISE NOTED<br>DEBURR & BREAK ALL SHARP EDGES  | DRAWN: R. BISHOP<br>CHECKED: E. FELDL | DATE: 13 FEB 01<br>22 MAR 01  | DATE: 26 MAR 01 |
| APPROVED: WM. SCHNEIDER   |                                       | DATE: 26 MAR 01   |                 |

|                      |                         |                 |                 |
|----------------------|-------------------------|-----------------|-----------------|
| DO NOT SCALE DRAWING | APPROVED: WM. SCHNEIDER | DATE: 26 MAR 01 | DATE: 26 MAR 01 |
|----------------------|-------------------------|-----------------|-----------------|

Thomas Jefferson National Accelerator Facility  
 UNITED STATES DEPARTMENT OF ENERGY  
 Spallation Neutron Source  
 Cavity Tooling  
 Tack Weld Stand  
 Top Tube Locator Assembly

|  |                                     |               |        |
|--|-------------------------------------|---------------|--------|
| SIZE: C<br>DWG. NO.: CRM-900-0010-0119 | USED ON ASSY NO.: CRM-900-0010-0100 | SHEET: 1 OF 1 | REV. A |
|--|-------------------------------------|---------------|--------|