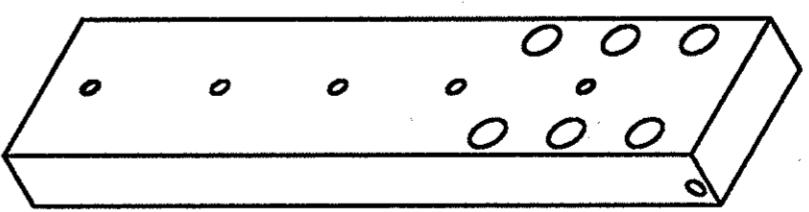
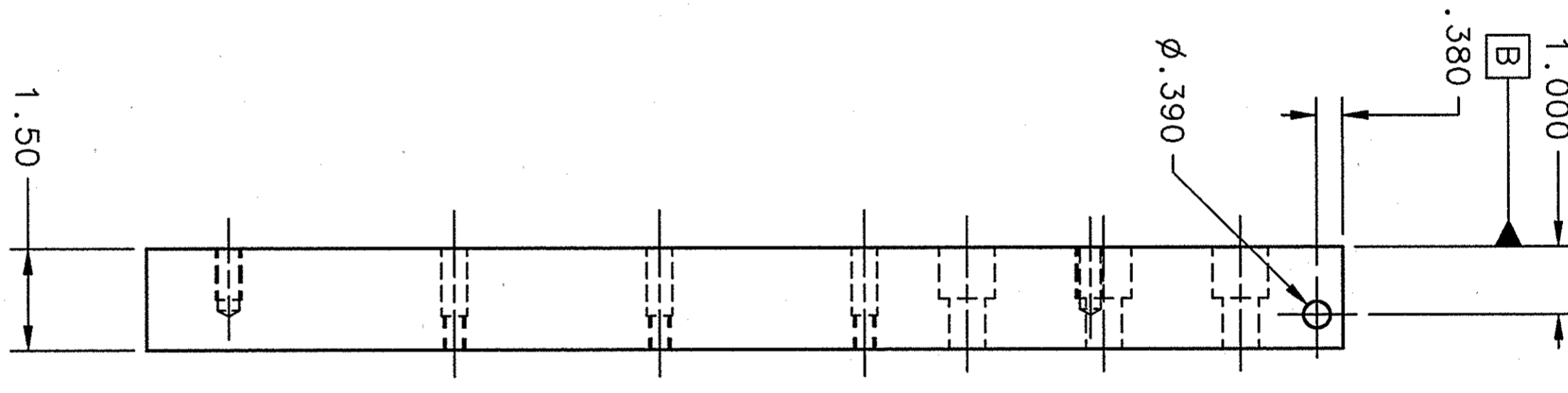
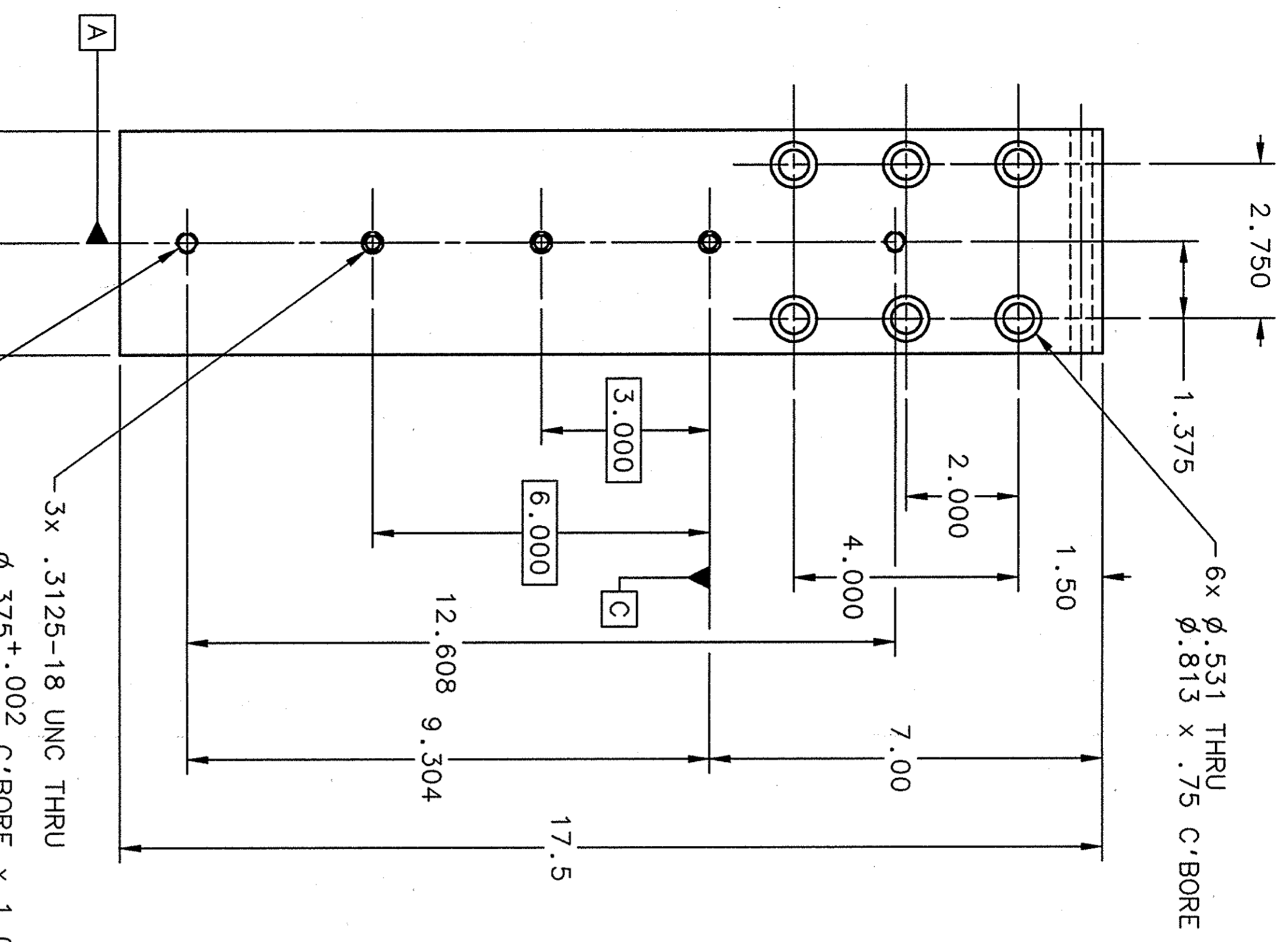


REVISION HISTORY				
ZONE	REV	DESCRIPTION	DATE	APPROVED



6x Ø.531 THRU  
 Ø.813 x .75 C'BORE  
 3x .3125-18 UNC THRU  
 Ø.375+.002 C'BORE x 1.00 DEEP  
 Ø.002 A B C

2x Ø.375-16 UNC x .75 DEEP

4.00

2.00

1.50

7.00

4.000

2.000

3.000

6.000

12.608

9.304

17.5

DOCUMENT CONTROL STAMP		DIN & TOL PER ASME Y14.5 UNLESS OTHERWISE SPECIFIED DIMENSIONS ARE IN INCHES TOLERANCES ARE: FRACTIONS DECIMAL ANGLES ± N/A .XX ± .03 ± .50° .XXX ± .005	
MATERIAL 6061-T6 ALUMINUM		THIRD ANGLE PROJECTION	
FINISH MACHINED SURFACES DEBURR & BREAK ALL SHARP EDGES		UNLESS OTHERWISE NOTED	
DO NOT SCALE DRAWING		DO NOT SCALE DRAWING	
APPROVALS		DATE	
DRAWN CHRIS BRANES		3 MAY 02	
CHECKED [Signature]		3 MAY 02	
APPROVED [Signature]		3 MAY 02	
APPROVED [Signature]		3 MAY 02	
TRACKING NO. 104130801-TRC-8320- A343-800		SIZE DWG. NO. C	
Thomas Jefferson National Accelerator Facility UNITED STATES DEPARTMENT OF ENERGY		CRM-900-0010-0123	
SPALLATION NEUTRON SOURCE CRYMODULE - CAVITY TOOLING HELIUM VESSEL TACK WELD FIXTURE BACK PIVOT-LOWER PLATE-DETAIL		SCALE 1:2	
Jefferson Lab		SHEET 1 OF 1	

4 3 2 1