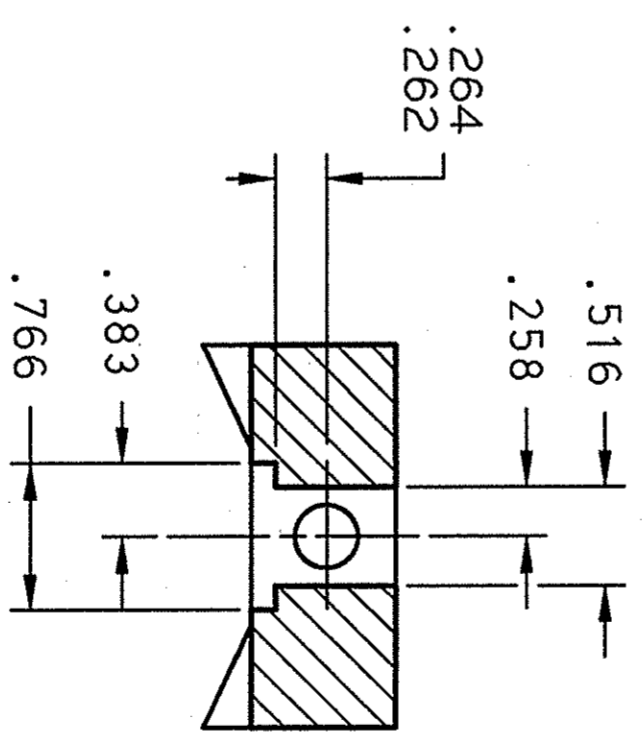
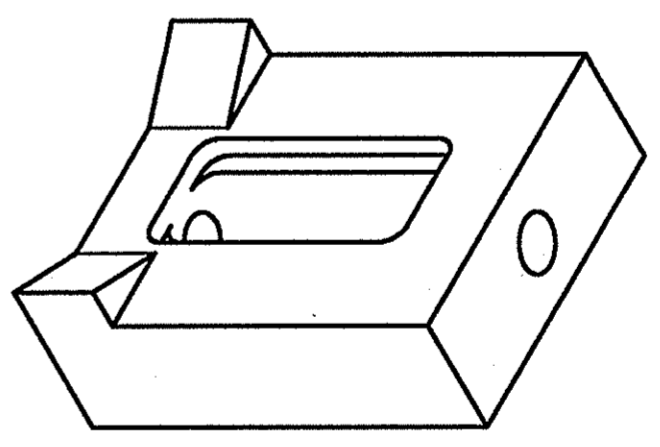
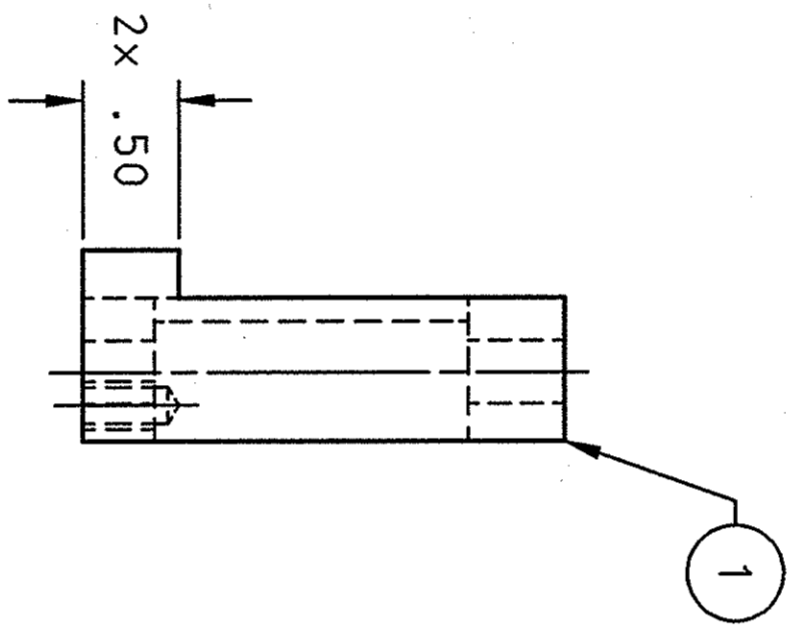
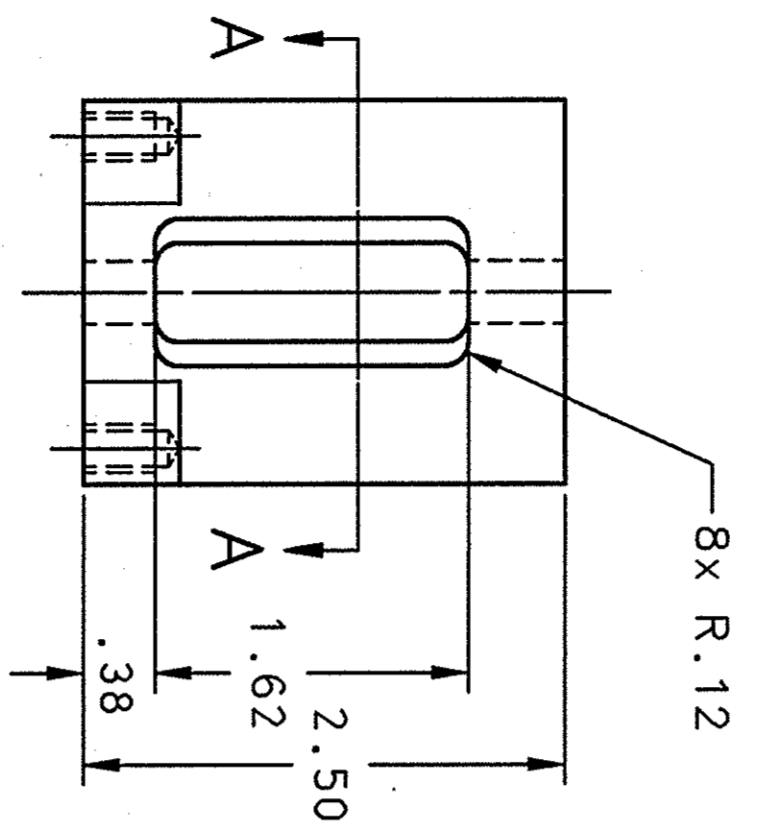
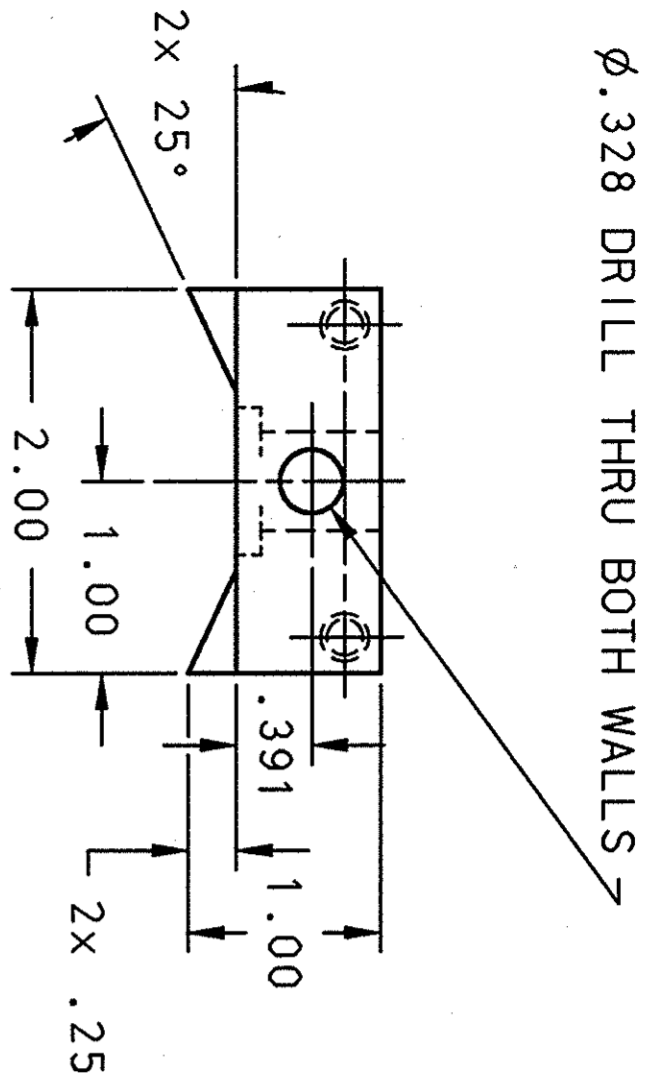


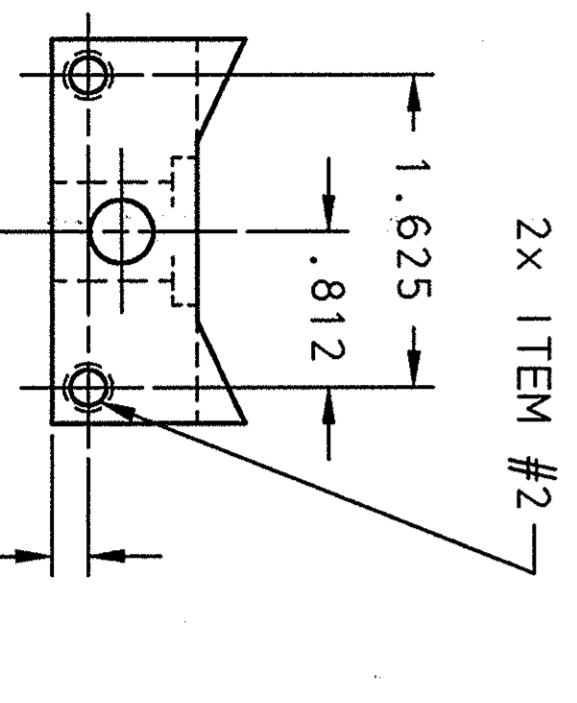
REVISION HISTORY		
ZONE	REV	DESCRIPTION
		DATE
		APPROVED



SECTION A-A

NOTE:
 -1 SUGGESTED SOURCE
 McMASTER CARR
 PHONE #: 1-732-329-3200

QTY	ITEM NO.	PART OR IDENTIFYING NO.	DESCRIPTION	MATERIAL SPECIFICATION	NOTES
2	2	McMASTER CARR 91732A212	.25-20 UNC x .375 LONG HELICAL INSERTS	STAINLESS STEEL	-
1	1	-	BODY	6061-T6 ALUMINUM	-



ICG

FINISH 125 UNLESS OTHERWISE NOTED
 DEBURR & BREAK ALL SHARP EDGES
 DO NOT SCALE DRAWING

UNLESS OTHERWISE SPECIFIED DIMENSIONS ARE IN INCHES
 TOLERANCES ARE:
 FRACTIONS DECIMAL ANGLES
 #N/A .XXX ±.005 #.50°

CADD I.D. NO.: I-DEAS 104130801-T8C-8320-A233-R00

APPROVALS
 DRAWN CHRIS GRAVES
 CHECKED/3/1/2002
 APPROVED [Signature]

DATE 13 Dec 01

Thomas Jefferson National Accelerator Facility
 UNITED STATES DEPARTMENT OF ENERGY

SPALLATION NEUTRON SOURCE CRYMODULE - CAVITY TOOLING TACK WELD STAND BODY - RESTRAINT - DETAIL

SIZE DWG. NO. CRM-900-0010-0553
 SCALE 1:1 USED ON ASSY NO. CRM-900-0010-0551 SHEET 1 OF 1