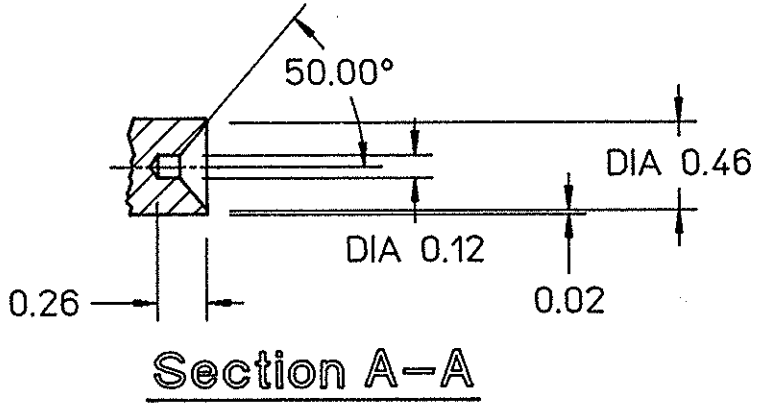
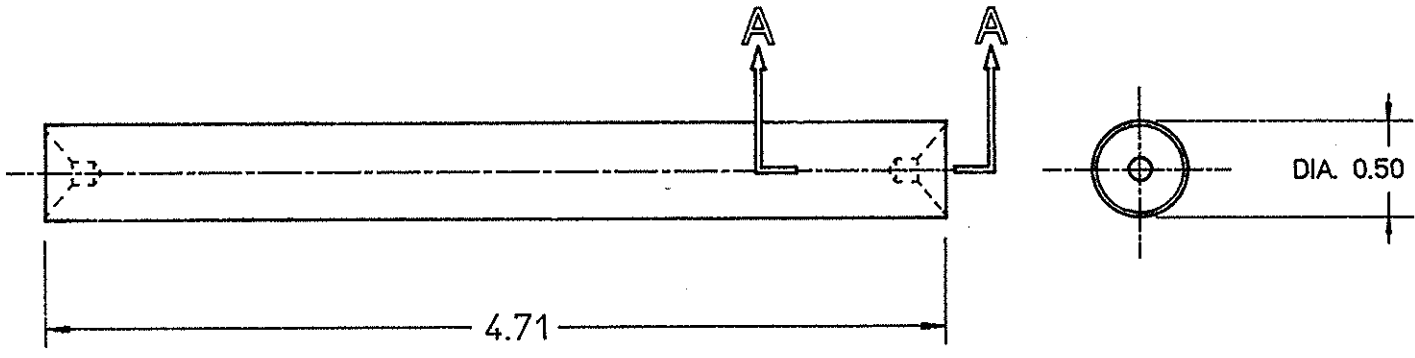


DWG. NO. 22512-A-0009 SHT. 1 REV. A

| REVISIONS | | | | |
|-----------|------|-------------------------------------|----------|------------------------|
| ZONE | REV. | DESCRIPTION | DATE | APPROVED |
| - | A | GENERAL REVISIONS / CHECKED DRAWING | 09/13/89 | <i>R.P.</i> 9/14/89 |



Section A-A

| QTY REQD | ITEM NO. | PART OR IDENTIFYING NO. | NOMENCLATURE OR DESCRIPTION | MATERIAL SPECIFICATION | NOTES |
|----------|----------|-------------------------|-----------------------------|------------------------|-------|
|----------|----------|-------------------------|-----------------------------|------------------------|-------|

PARTS LIST

| | | | | | |
|---|---|---------|---|------------------|---|
| DIM & TOL PER ANSI Y14.5 UNLESS OTHERWISE SPECIFIED DIMENSIONS ARE IN INCHES TOLERANCES ARE: FRACTIONS DECIMAL ANGLES ± .XX ± .02 ± 0.5 ° .XXX ± .005 | CADD I.D. NO. 2512000901 | | The Continuous Electron Beam Accelerator Facility NEWPORT NEWS, VIRGINIA UNITED STATES DEPARTMENT OF ENERGY | | |
| | MATERIAL CARBON TOOL STEEL (A2) | | APPROVALS <i>C. Moorey</i> | DATE 9/14/89 | BEAM TRANSPORT ADJUSTMENT CARTRIDGE COLUMN |
| FINISH 125 ✓ UNLESS OTHERWISE NOTED DEBURR & BREAK ALL SHARP EDGES | DRAWN R. WOLFLEY | 8-03-89 | CHECKED <i>G. Biallas</i> | 9-13-89 | |
| DO NOT SCALE DRAWING | APPROVED <i>G. Biallas</i> | 9/14/89 | SIZE DWG. NO. A 22512-A-0009 | REV. A | SCALE 1:1 |
| | | | USED ON ASSY NO. | SHEET OF | |