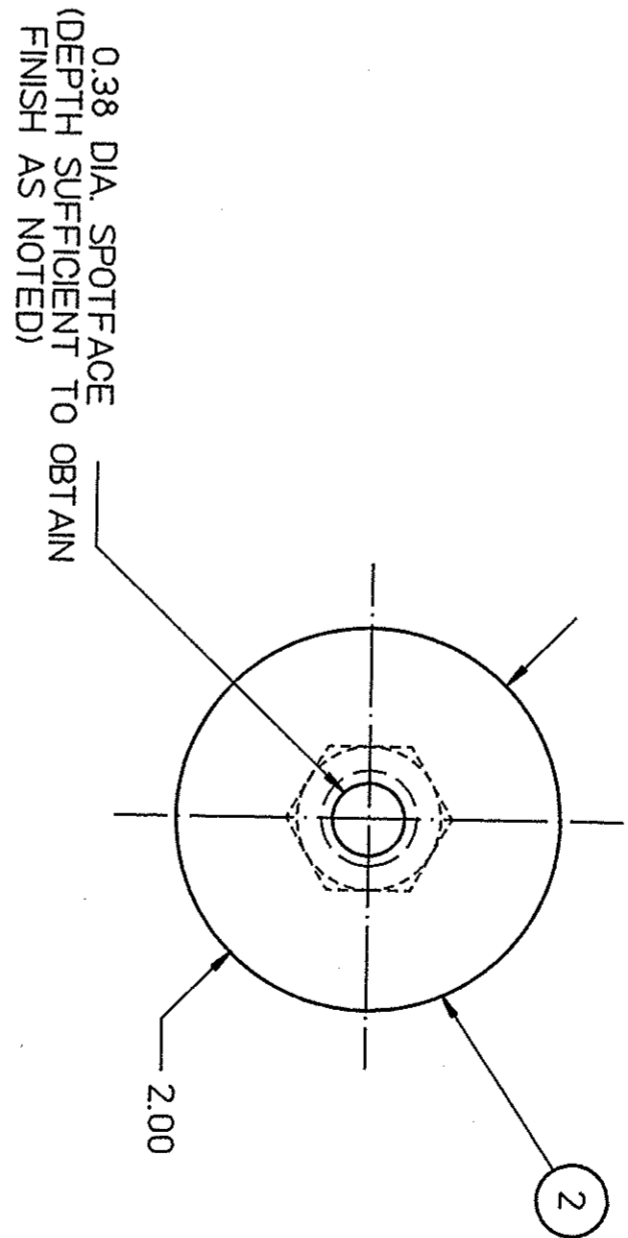
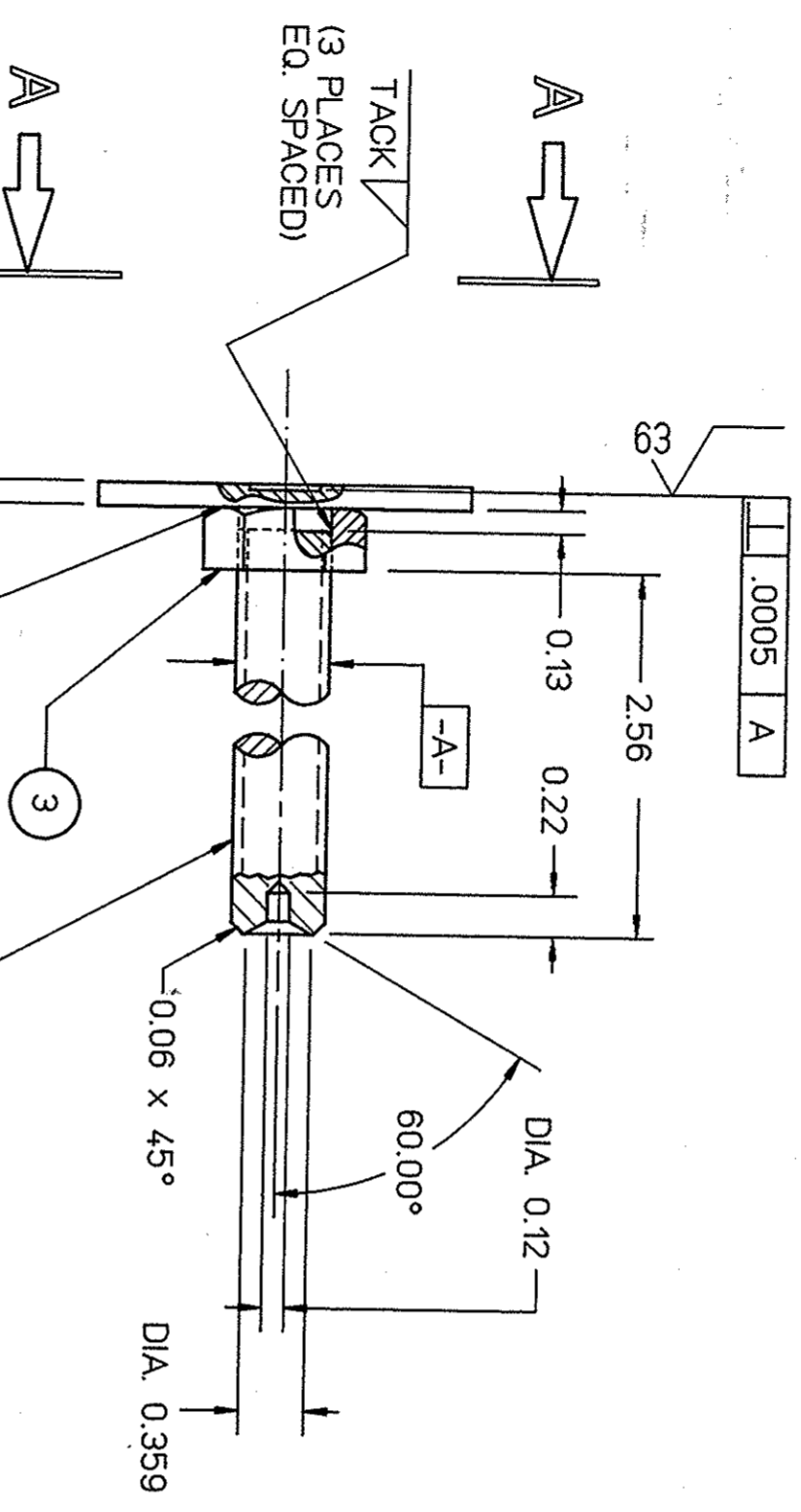


DWG. NO. 22512-C-0015		SHT. B	REV. 1
REVISIONS			
ZONE	REV.	DESCRIPTION	DATE
VAR	B	REDRAWN FROM REV. A / SAME DWG NO. PER REDESIGN.	10-24-89
			APPROVED
			<i>[Signature]</i>
			10/25/89



CENTER ON FLATS  
(3 PLACES  
EQ. SPACED)

VIEW A-A

QTY	ITEM NO.	PART OR IDENTIFYING NO.	DESCRIPTION	MATERIAL SPECIFICATION	NOTES
1	3		HEX JAM NUT	0.50-13 UNC x 2B	
1	2		INDICATOR PLATE	ROUND BAR STOCK 2.00 x 0.13 THICK	STEEL 1018
1	1		VERTICAL SCREW	THREADED ROD 0.50-13 UNC x 2.77 LG	STEEL 1018

DIM. & TOL. PER ANSI Y14.5 DIMENSIONS UNLESS SPECIFIED TOLERANCES ARE IN INCHES FRACTIONS DECIMAL ANGLES # .XXX # .02 # 0.5 ° # .XXX # .005 # 0.5 °		CADD I.D. NO. 2512001501	
MATERIAL AS NOTED		APPROVALS	DATE
FINISH 125 UNLESS OTHERWISE NOTED DEBURR & BREAK ALL SHARP EDGES		DRAWN R. WOLFLEY	10-24-89
DO NOT SCALE DRAWING		CHECKED <i>[Signature]</i>	10/25/89
		APPROVED <i>[Signature]</i>	10/25/89

 The Continuous Electron Beam Accelerator Facility UNIVERSITY OF VIRGINIA DEPARTMENT OF ENERGY		BEAM TRANSPORT ADJUSTMENT CARTRIDGE VERTICAL SCREW, LONG	
SCALE	1:1	USED ON ASSY NO.	22512-C-0015
SHEET	1	OF	1
REV.	B		