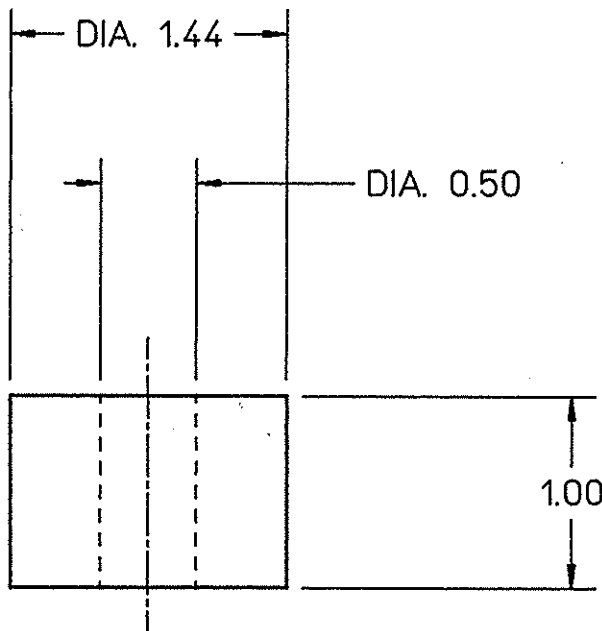


DWG. NO.	22512-A-0016	SHT. 1	REV. A
----------	--------------	--------	--------


REVISIONS				
ZONE	REV.	DESCRIPTION	DATE	APPROVED
-	A	GENERAL REVISIONS / CHECKED DRAWING	09/12/89	<i>[Signature]</i> 9/12/89

**REF. ECO #22512-0015**



QTY REQD	ITEM NO.	PART OR IDENTIFYING NO.	NOMENCLATURE OR DESCRIPTION	MATERIAL SPECIFICATION	NOTES
----------	----------	-------------------------	-----------------------------	------------------------	-------

**PARTS LIST**

DIM & TOL PER ANSI Y14.5 UNLESS OTHERWISE SPECIFIED DIMENSIONS ARE IN INCHES TOLERANCES ARE: FRACTIONS DECIMAL ANGLES ± .XX ± .06 ± .XXX ±	CADD I.D. NO. <b>2512001601</b>		 The Continuous Electron Beam Accelerator Facility NEWPORT NEWS, VIRGINIA UNITED STATES DEPARTMENT OF ENERGY		
	APPROVALS	DATE			
MATERIAL <b>POLYURETHANE          FOAM</b>	DRAWN <b>R. WOLFLEY</b>	<b>8-03-89</b>			
FINISH <input checked="" type="checkbox"/> UNLESS OTHERWISE NOTED DEBURR & BREAK ALL SHARP EDGES	CHECKED <i>C. Murray</i>	<b>9/14/89</b>			
<b>DO NOT SCALE DRAWING</b>	APPROVED <b>G. BIALLAS</b>	<b>9-12-89</b>	SIZE <b>A</b>	DWG. NO. <b>22512-A-0016</b>	REV. <b>A</b>
			SCALE <b>1:1</b>	USED ON ASSY NO.	SHEET OF