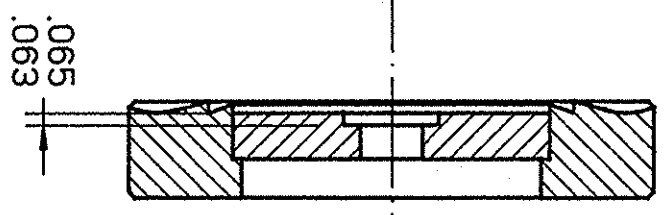
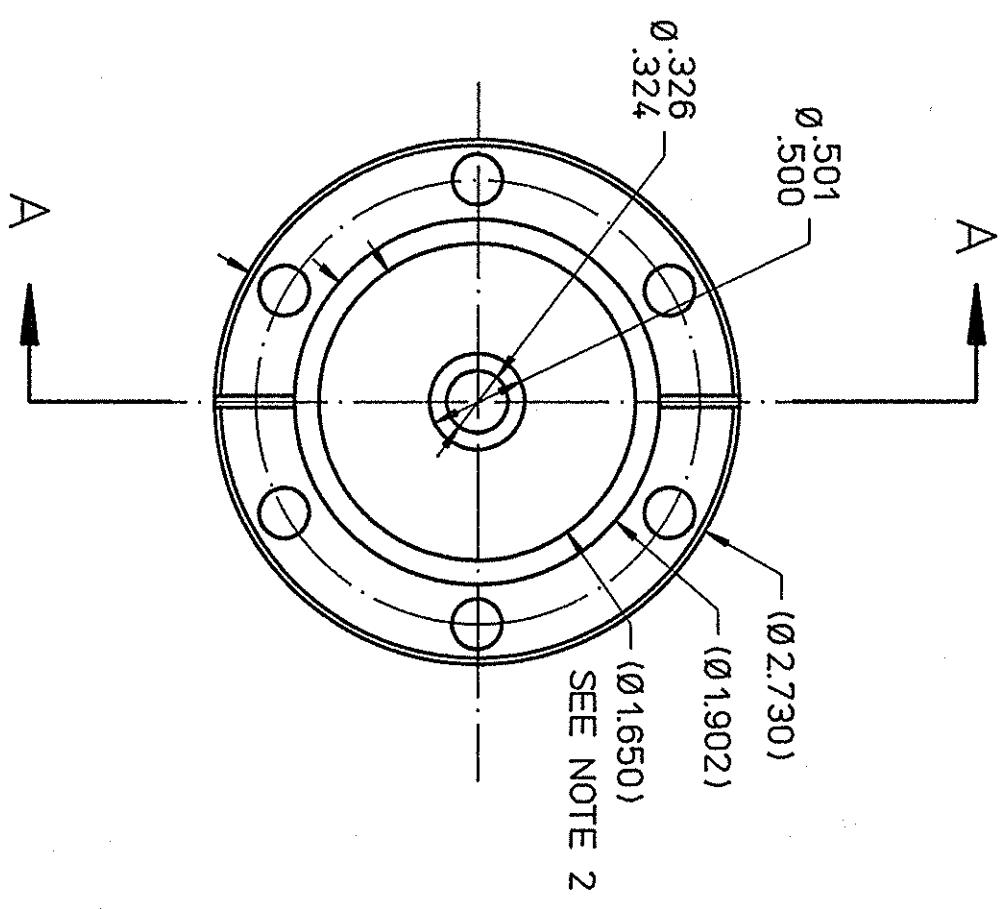


REVISIONS				
ZONE	REV.	DESCRIPTION	DATE	APPROVED



SECTION A-A

NOTES:

1. ALL MACHINING, HANDLING AND CLEANING TO MEET CEBAF SPEC 22631-S-001 & 22632-S-001.
2. PROTECT KNIFE EDGE DURING MACHINING. ANY DAMAGE (SCRATCHES, DENTS, ETC.) TO KNIFE EDGE IS UNACCEPTABLE.

DIM & TOL PER ANSI Y14.5 DIMENSIONS UNLESS SPECIFIED DIMENSIONS ARE IN INCHES TOLERANCES ARE:		CADD I.D. NO. '1/wbs/3/39200/0b0142'			
FRACTIONS DECIMAL ANGLES ± .01 ± .002 ±	APPROVALS DRAWN: JACKI R. SMITH CHECKED: [Signature] APPROVED: [Signature]	DATE 10/04/94 11-8-94 11-3-94	BEAM TRANSPORT BEAM CURRENT MONITOR FLANGE, DRIVE/PICKUP LOOP	THE CONTINUOUS ELECTRON BEAM ACCELERATOR FACILITY NEWPORT NEWS, VIRGINIA UNITED STATES DEPARTMENT OF ENERGY	SIZE DWG. NO. 39200-B-0142
FINISH: 63 UNLESS OTHERWISE NOTED DEBURR & BREAK ALL SHARP EDGES	DO NOT SCALE DRAWING	SCALE: FULL	USED ON ASSY NO. 39200-C-0141	SHEET 1 OF 1	REV. -

