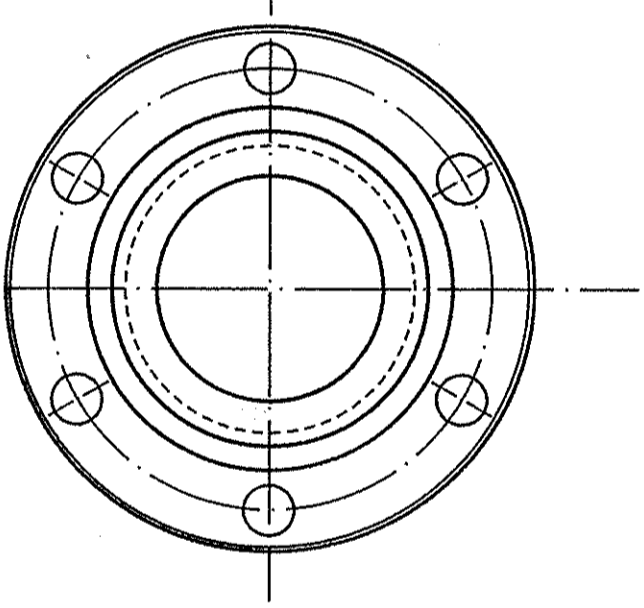
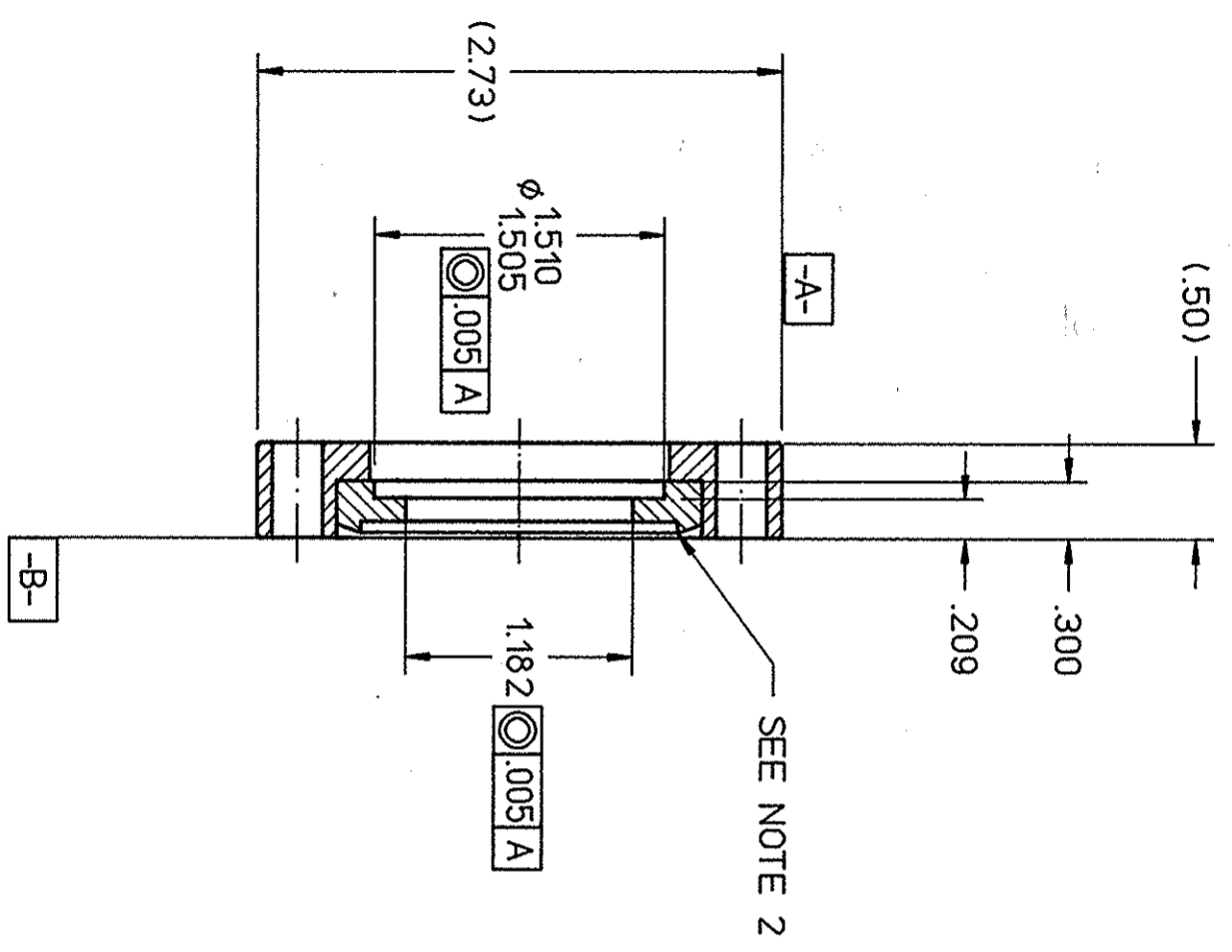


REVISIONS		
ZONE	REV.	DESCRIPTION
		DATE
		APPROVED



- NOTES:
1. MACHINING, HANDLING & CLEANING TO MEET JEFFERSON LAB (CEBAF) SPEC 22631-S-001 & 22632-S-001.
  2. PROTECT FLANGE FACE DURING & AFTER PROCESSING WITH SUITABLE PLASTIC CAP. DAMAGE TO KNIFE EDGE IS UNACCEPTABLE.
  3. FLANGE TO BE PROVIDED BY JEFFERSON LAB.

DIM & TOL. PER ANSI Y14.5 UNLESS OTHERWISE SPECIFIED DIMENSIONS ARE IN INCHES TOLERANCES ARE: FRACTIONS DECIMAL ANGLES ± N/A .XX ± .01 ± N/A XXX ± .005 ± N/A		CADD I.D. NO. /wbs/3/39200/0b0180		Thomas Jefferson National Accelerator Facility NEWPORT NEWS, VIRGINIA UNITED STATES DEPARTMENT OF ENERGY	
MATERIAL MAKE FROM MDC#100012		APPROVALS DRAWN MICHAEL LLOYD 04/28/97		BEAM TRANSPORT HALL 'B' BEAM POSITION MONITOR BEAM FLANGE	
FINISH 63 UNLESS OTHERWISE NOTED DEBURR & BREAK ALL SHARP EDGES		CHECKED APPROVED APPROVED 5-6-97 5-7-97 5/7/97		SIZE DWG. NO. B 39200-B-0180	
DO NOT SCALE DRAWING		APPROVED 5/2/97		SCALE FULL USED ON ASST. NO. 39200-D-0176 SHEET 1 OF 1	

