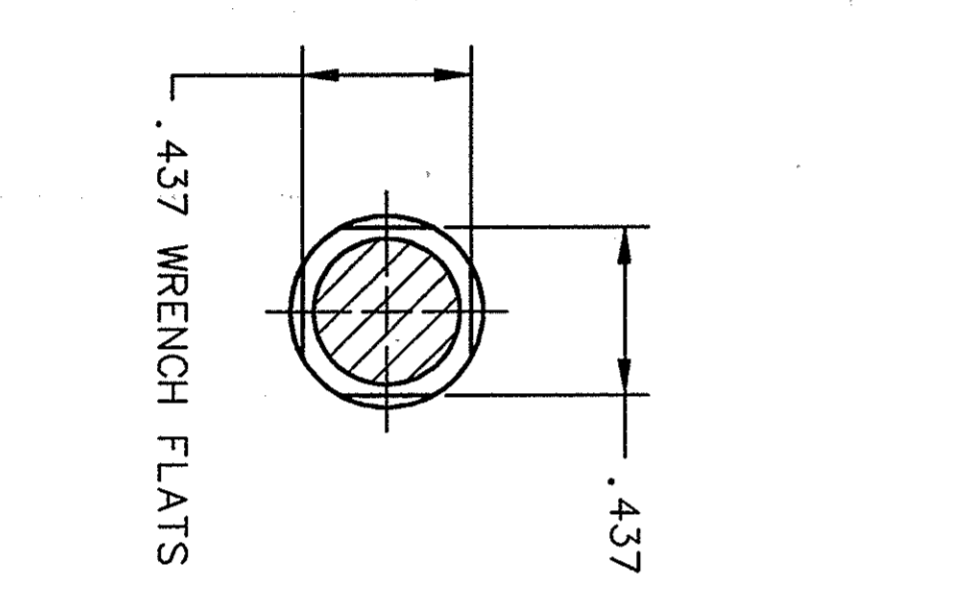
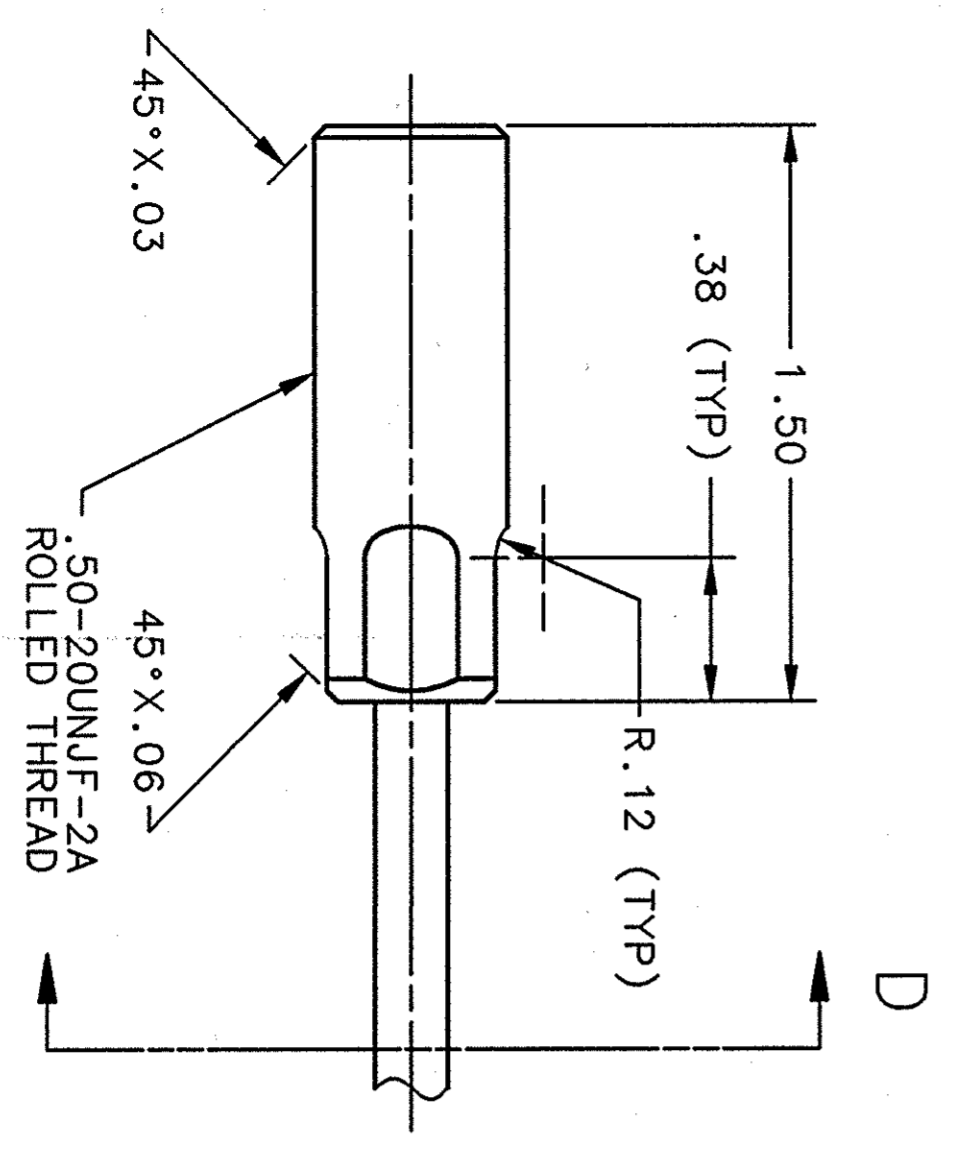
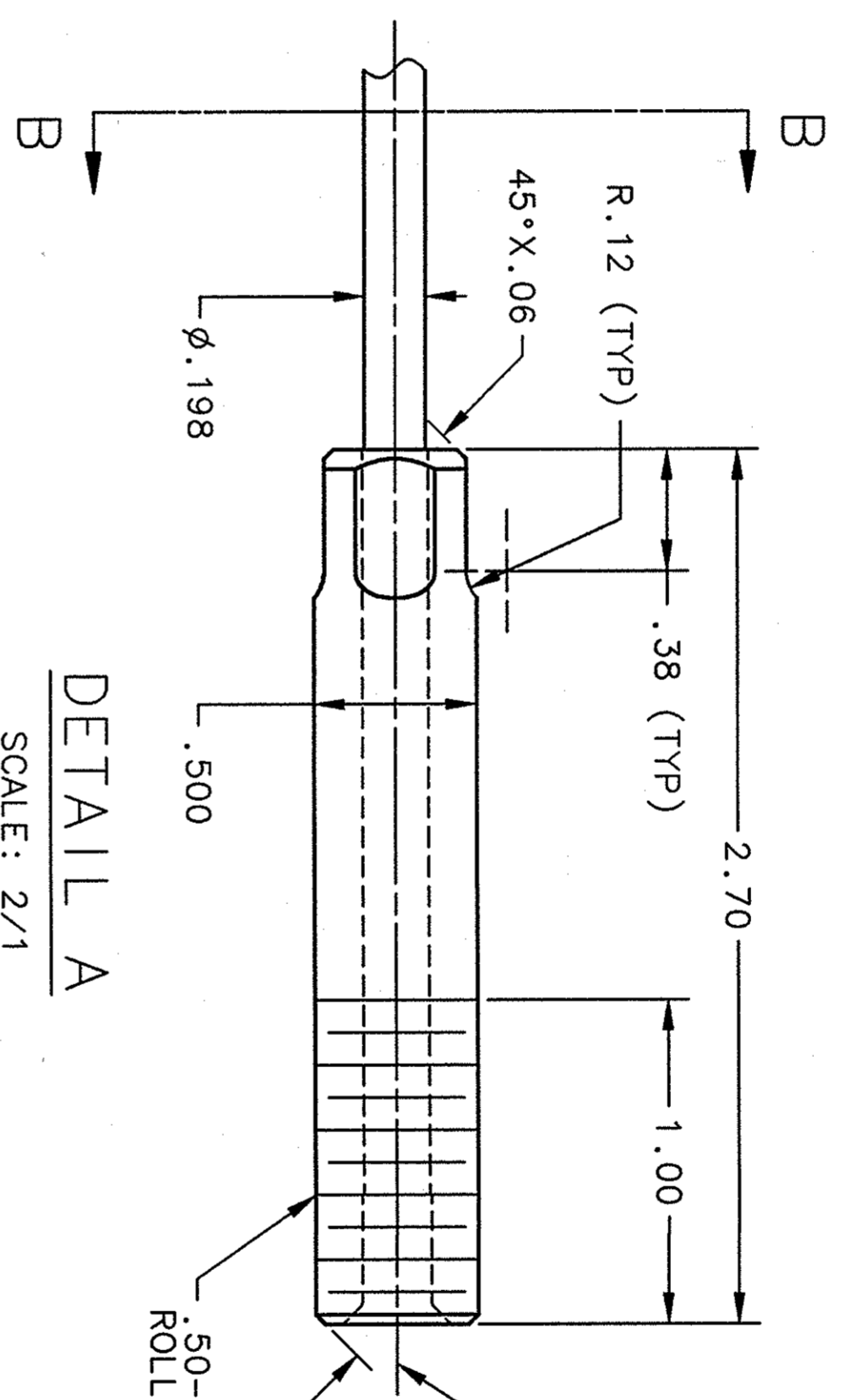
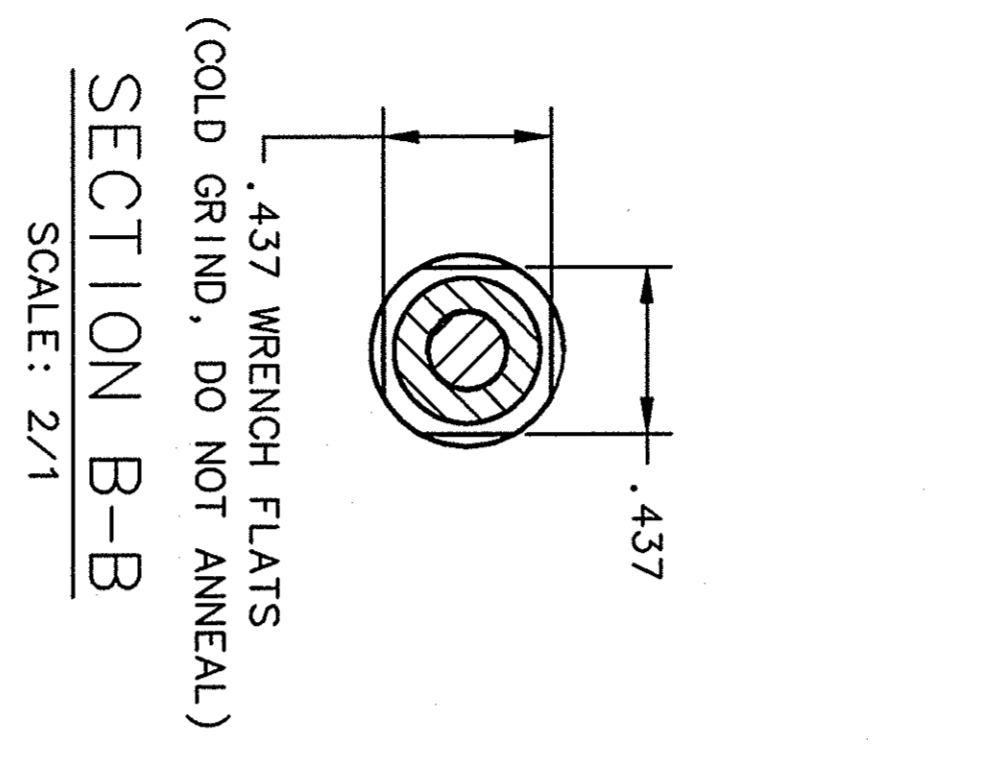
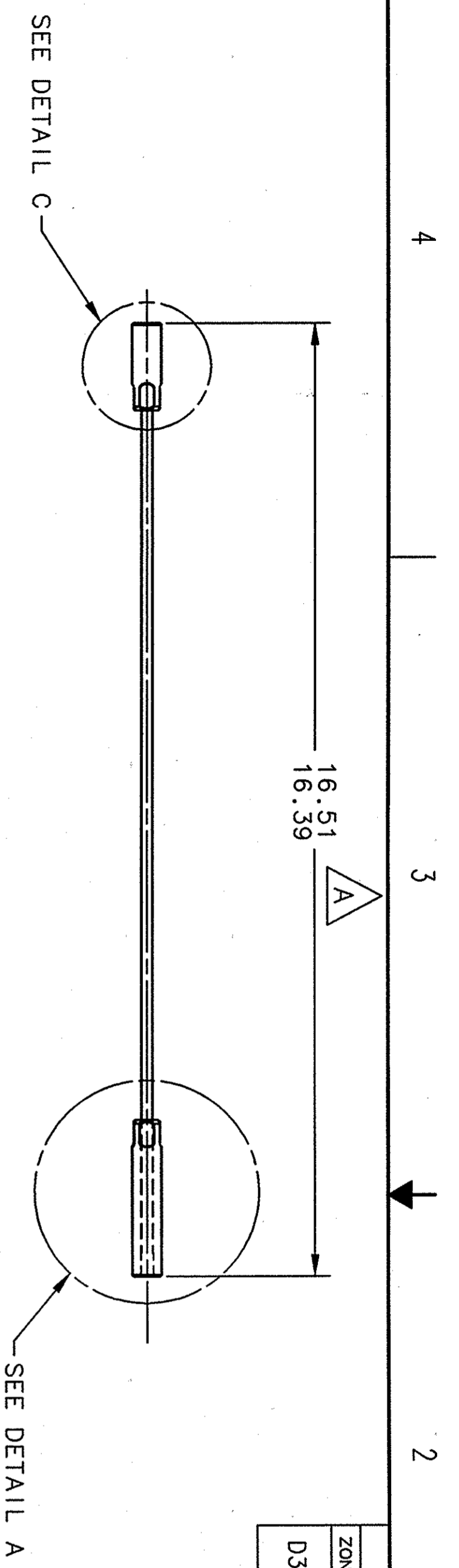


REVISION HISTORY				
ZONE	REV	DESCRIPTION	DATE	APPROVED
D3	A	ALTERED: 16.51/16.39 WAS 16.45. JEH	20AUG02 20AUG02	T WHITLATCH Sargent



**MATERIAL: ROD**  
 NITRONIC 50 AUSTENITIC STAINLESS STEEL  
 MINIMUM YIELD STRENGTH OF 174 KSI  
 AT 0.2% OFFSET (50% COLD DRAWN)  
 MATERIAL: ROD END  
 655 EVERDUR BRONZE  
 80 KSI MIN. UTS

**TESTING**  
 ONE OUT OF 36 (RANDOM SAMPLE)  
 SHALL BE TESTED TO 3000#  
 TENSILE WITH LESS THAN 0.2% OFFSET

METHOD OF CONSTRUCTION /  
 ATTACHMENT AT VENDORS OPTION  
 (LAB APPROVAL REQUIRED)  
 BOTH ENDS  
 SUGGESTED METHOD: NAVTECH FORM

DIM & TOL PER ANSI Y14.5 UNLESS OTHERWISE SPECIFIED DIMENSIONS ARE IN INCHES TOLERANCES ARE: FRACTIONS DECIMAL ANGLES $\pm 1/64$ .XX $\pm .015$ $\pm .50^\circ$ $\pm 1/64$ .XXX $\pm .005$		CADD I.D. NO.: 1-DEAS PROJ: 115000 LIBY: 115630		APPROVALS DRAWN: J. HENRY CHECKED: JAMES J TAKACS APPROVED: T WHITLATCH APPROVED: W J SCHNEIDER		DATE 22DEC99 11FEB00 11FEB00	
MATERIAL: SEE ABOVE FINISH: 125 UNLESS OTHERWISE NOTED DEBURR & BREAK ALL SHARP EDGES DO NOT SCALE DRAWING		Thomas Jefferson National Accelerator Facility UNITED STATES DEPARTMENT OF ENERGY		SRF LINAC / CRYMODULE 1998 SPACEFRAME LOWER NITRONIC SUPPORT ROD DETAIL		SIZE DWG. NO. 115630-1011C USED ON ASSY NO. 115630-1001E	



4 3 2 1

DWG. NO. 115630-1011C SHT. 1 REV. A