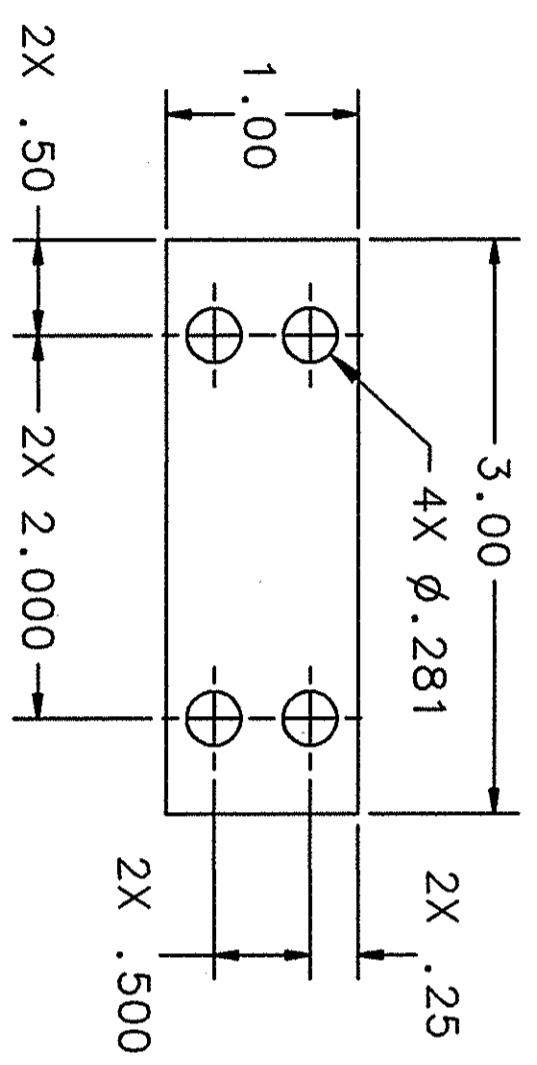
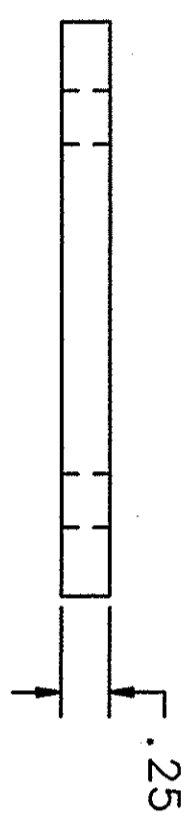


REVISION HISTORY				
ZONE	REV	DESCRIPTION	DATE	APPROVED
ALL	A	CHG *4X $\phi$ .281* TO *4X .281 X .781*.	16AUG02	J TAKACS
ALL	B	REDESIGN AND REDRAW.	16AUG	AL GUERRA JR
				MDS
				MDS
				MDS



NOTE:

1. BUILD SHIELD AND INSULATION PER SOW #115070-1008S.

<p><b>DDG</b></p>		<p>DIM &amp; TOL PER ANSI Y14.5 UNLESS OTHERWISE SPECIFIED DIMENSIONS ARE IN INCHES TOLERANCES ARE: FRACTIONS    DECIMAL    ANGLES ± .XX ± .02    ± .50° ± .XXX ± .005</p>	
<p>MATERIAL <b>COPPER</b></p>		<p>CADD I.D. NO.: I-DEAS PROJ: 115000 LBRY: 115650</p>	
<p>FINISH 63 UNLESS OTHERWISE NOTED DEBURR &amp; BREAK ALL SHARP EDGES</p>		<p>APPROVALS    DATE</p>	
<p>DO NOT SCALE DRAWING</p>		<p>DRAWN C L HUTTON    04APR00</p>	
<p>OTHERWISE NOTED</p>		<p>CHECKED JAMES TAKACS    29SEP00</p>	
<p>APPROVED AL GUERRA JR    10/9/00</p>		<p>APPROVED JOE PREBLE    10/9/00</p>	
<p>Thomas Jefferson National Accelerator Facility UNITED STATES DEPARTMENT OF ENERGY</p>			
<p>Jefferson Lab</p>			
<p>SRF LINAC/CRYMODULE 1998 SHIELDS &amp; INSULATION WAVEGUIDE STRAP UPPER BRACKET - DETAIL</p>			
<p>SIZE DWG. NO.    REV. B    115650-1036B    B</p>		<p>SCALE    FULL    USED ON ASSY NO. 115650-1034C    SHEET 1 OF 1</p>	