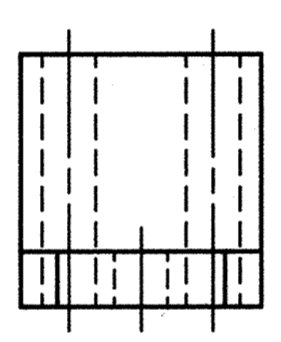
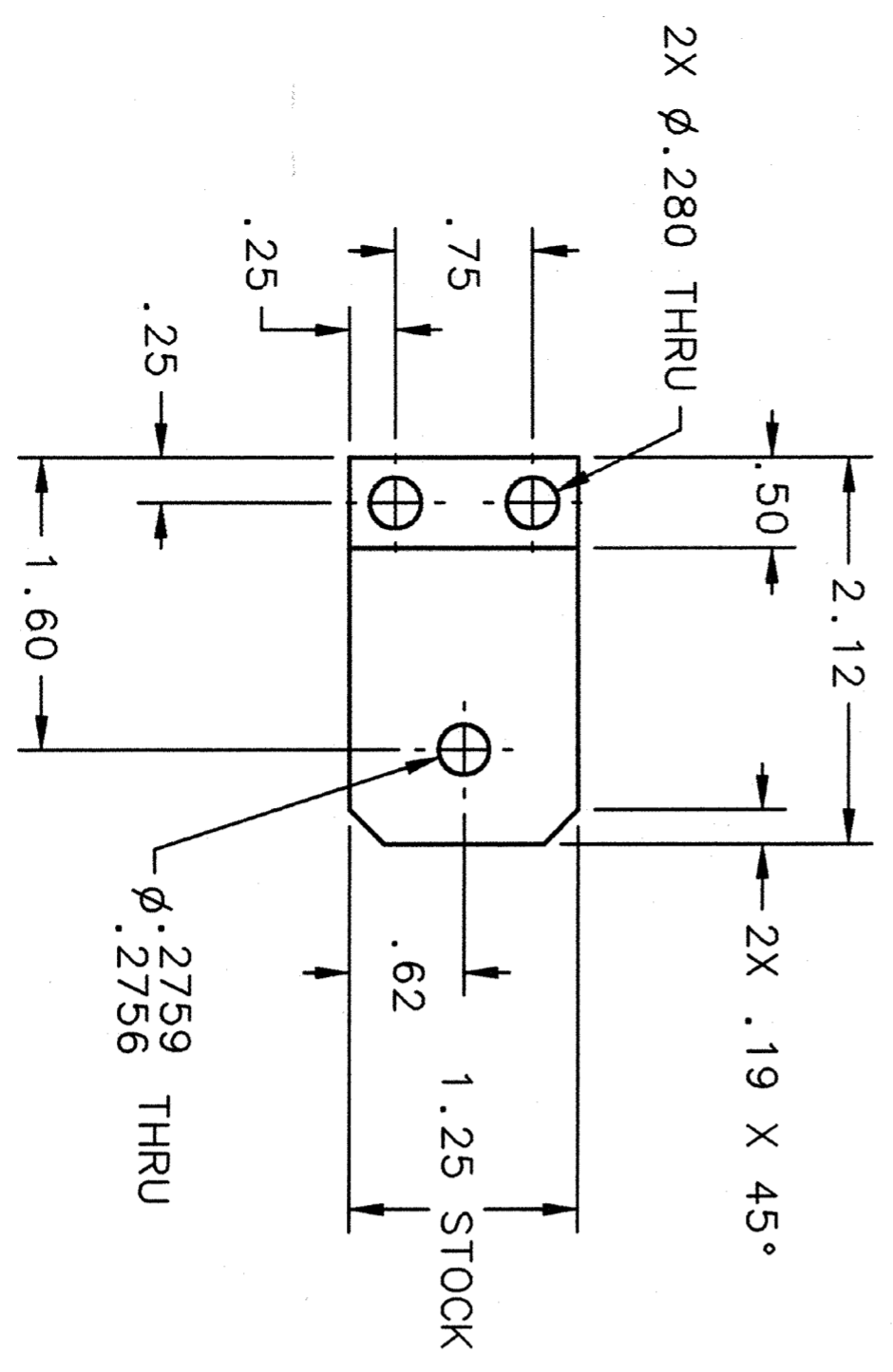
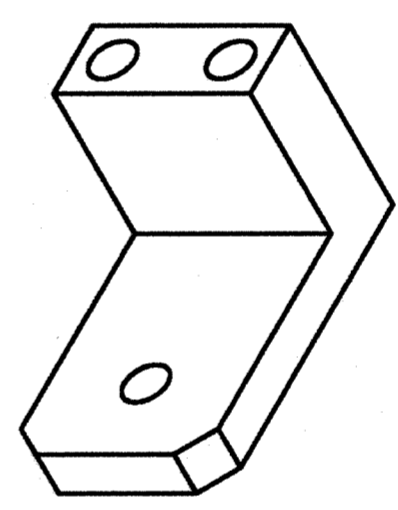
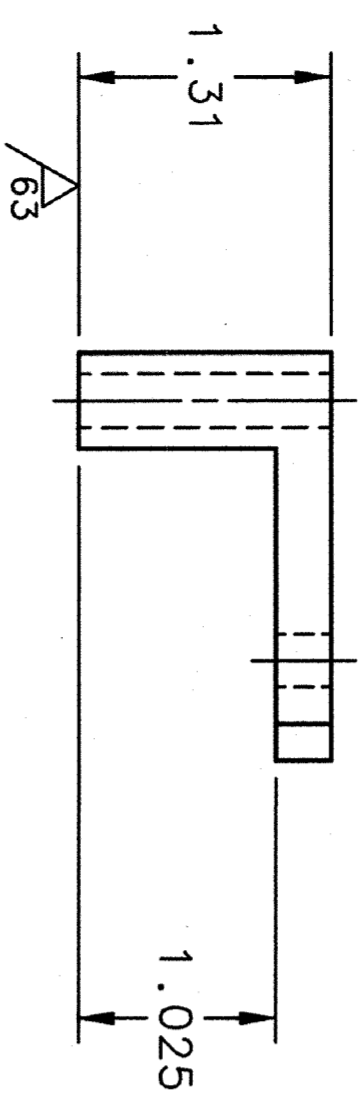


| REVISION HISTORY |     |   |           |          |
|------------------|-----|---|-----------|----------|
| ZONE             | REV | DESCRIPTION   | DATE      | APPROVED |
|                  | A   | 2PLC TOL WAS .01, ADD 63 FIN TO FRNT, ADD STOCK SPEC TO 1.25 THK. | 24 Feb 04 | WPH      |
|                  |     |   | 24 Feb 04 | SFD      |



NOTES  
 1. CLEAN AND HANDLE FINISHED PART PER TUNAF SPECIFICATION 11141-S-0034.

|   |  |   |  |                      |  |  |  |
|---|--|---|--|----------------------|--|--|--|
| DOCUMENT CONTROL STAMP  |  | DIN & TOL PER ASME Y14.5. UNLESS OTHERWISE SPECIFIED DIMENSIONS ARE IN INCHES. TOLERANCES ARE: FRACTIONS DECIMAL ANGLES ± N/A ± .01 ± .005 ± .50° |  | TRACKING NO. N/A     |  | Thomas Jefferson National Accelerator Facility<br>UNITED STATES DEPARTMENT OF ENERGY |  |
| MATERIAL<br>316L STAINLESS STEEL                              |  | THIRD ANGLE PROJECTION  |  | APPROVALS            |  | CRM<br>100 MW CRYMODULE<br>TUNER<br>MOTOR MOUNT FRONT - DETAIL                       |  |
| FINISH<br>MACHINED SURFACES<br>DEBURR & BREAK ALL SHARP EDGES |  | UNLESS OTHERWISE NOTED  |  | DRAWN<br>K.H. SMITH  |  | DATE<br>05FEB03  |  |
| DO NOT SCALE DRAWING  |  | 125   |  | CHECKED<br>D. MACHIE |  | DATE<br>4/28/03  |  |
|   |  | UNLESS OTHERWISE NOTED  |  | APPROVED<br>E. DALY  |  | DATE<br>4/28/03  |  |
|   |  | UNLESS OTHERWISE NOTED  |  | APPROVED<br>C. REICE |  | DATE<br>4/29/03  |  |
|   |  | UNLESS OTHERWISE NOTED  |  | SCALE 1:1            |  | SHEET 1 OF 1   |  |