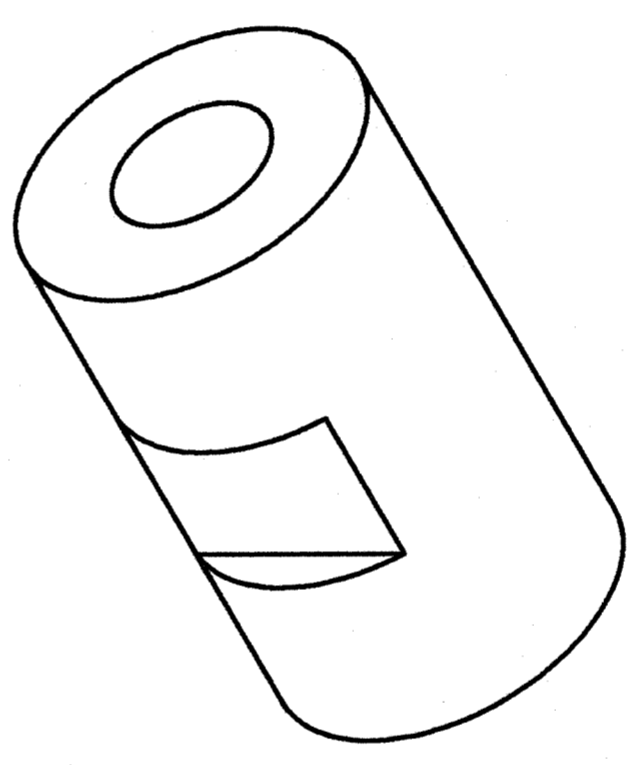
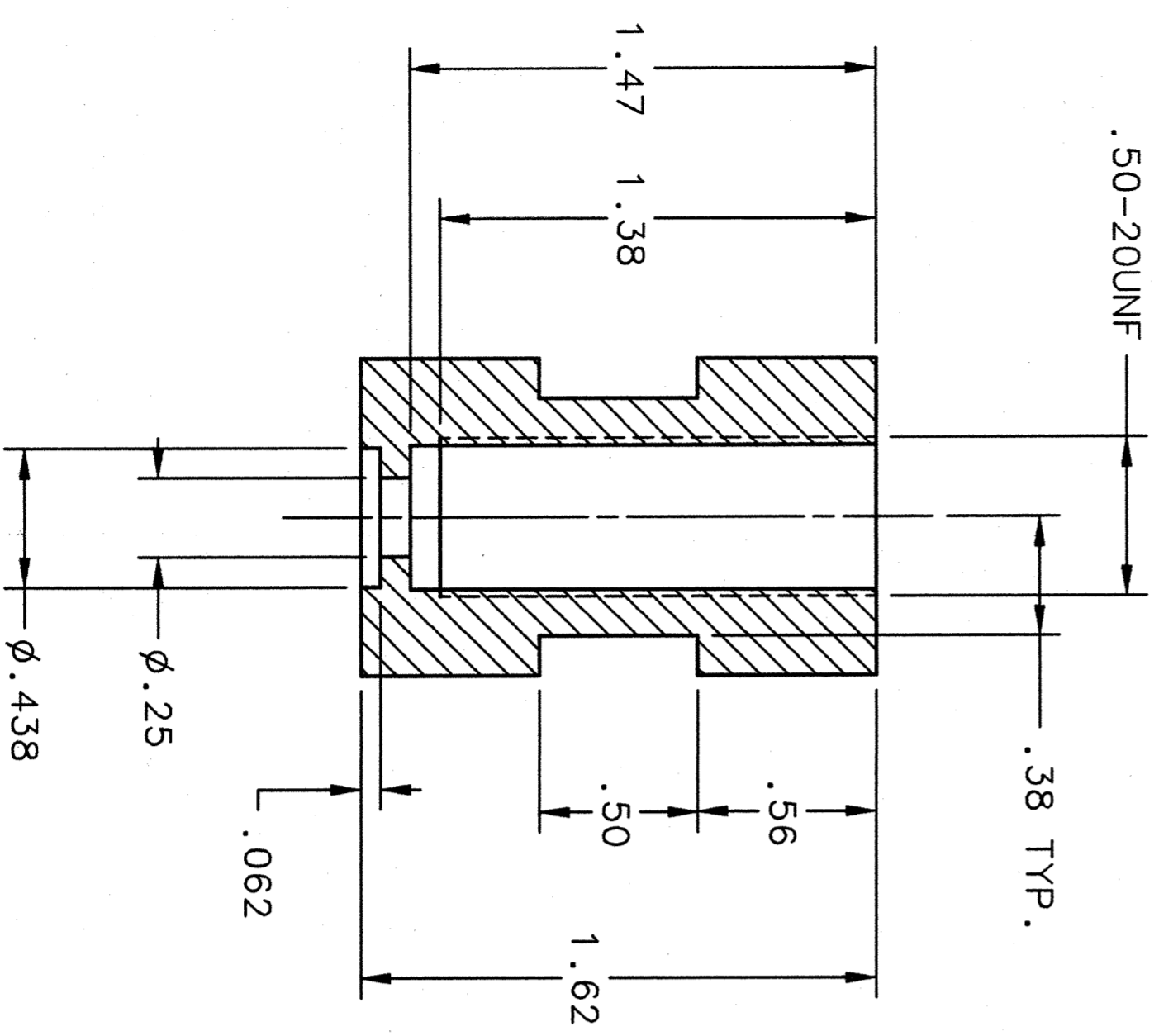
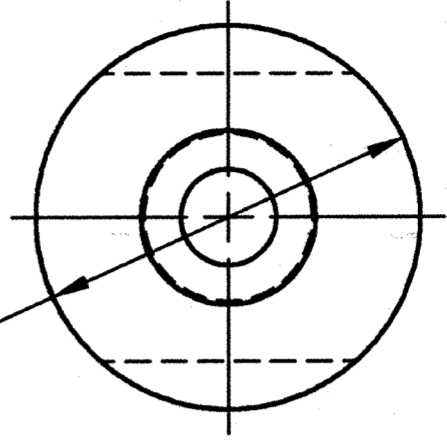


| REVISION HISTORY | | | | |
|------------------|-----|-------------------------------|---------|----------|
| ZONE | REV | DESCRIPTION | DATE | APPROVED |
| A | | 2PLC TOL WAS .01, ADD NOTE 2. | 24Feb04 | Wch |
| | | KHS FEB 04 | 24Feb04 | ETS |



NOTES:

- CLEAN AND HANDLE FINISHED PARTS PER TUNAF SPECIFICATION 11141-S-0034.
- DICRONITE DL-5 (OR EQUIVALENT) ALL SURFACES PER MIL SPEC DOD-L-85645 A-TYPE 1.

SUGGESTED SOURCE:

DICRONITE DRY LUBE OF NEW JERSEY
 121 N. MICHIGAN AVE.
 KENILWORTH, N.J. 07033
 PH. 908 241-8222

| | | | | | | | |
|--|--|---|--|----------------------|--|--|--|
| DOCUMENT CONTROL STAMP | | DIN & TOL PER ASME Y14.5. UNLESS OTHERWISE SPECIFIED DIMENSIONS ARE IN INCHES. FRACTIONS DECIMAL ANGLES ± N/A | | TRACKING NO. N/A | | Thomas Jefferson National Accelerator Facility UNITED STATES DEPARTMENT OF ENERGY | |
| MATERIAL 316L STAINLESS STEEL | | THIRD ANGLE PROJECTION | | APPROVALS | | CRM 100 MW CRYMODULE TUNER FINE ADJUSTER PART 1 - DETAIL | |
| FINISH MACHINED SURFACES 125 UNLESS OTHERWISE NOTED DEBURR & BREAK ALL SHARP EDGES | | | | DRAWN K.H. SMITH | | SIZE DWG. NO. CRM1007050-0006 | |
| DO NOT SCALE DRAWING | | | | CHECKED D. WATTE | | SCALE 2:1 | |
| | | | | APPROVED E. DAILY | | CRM1007050 | |
| | | | | APPROVED C. REICE | | SHEET 1 OF 1 | |
| | | | | DATE 07EB03 | | | |
| | | | | DATE 4/28/03 | | | |
| | | | | DATE 4/29/03 | | | |
| | | | | REV. A | | | |

4 3 2 1

4 3 2 1