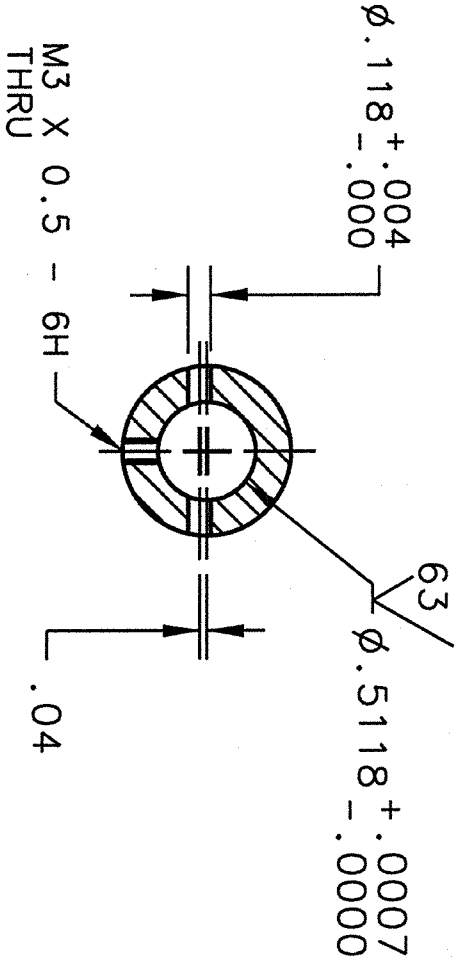
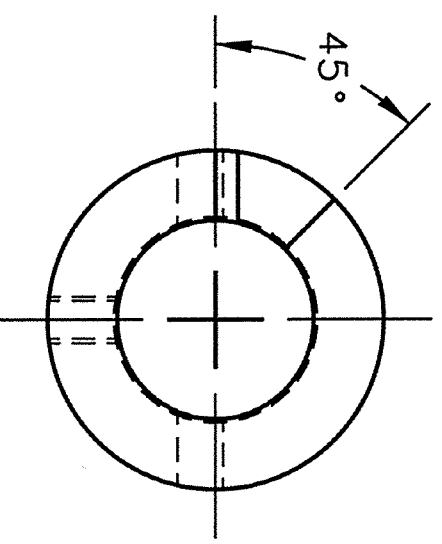


| REVISION HISTORY | | | | |
|------------------|-----|----------------------------------|-------------|---------------|
| ZONE | REV | DESCRIPTION | DATE | APPROVED |
| | A | CHANGED MTL. TO STAINLESS STEEL. | 26-JAN-2001 | J.P.H. |
| | | | 01/26/01 | W J SCHNEIDER |
| | B | ADDED NOTE 2. | KHS FEB 04 | WJH |
| | | | 24 FEB 04 | WJH |
| | | | 24 FEB 04 | ETD |

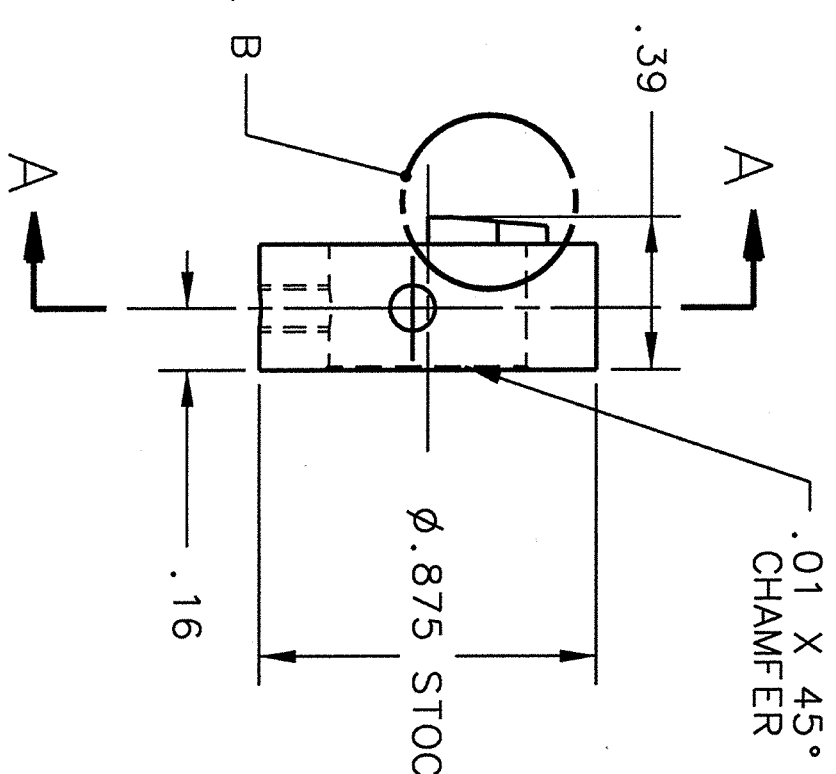


SECTION A-A

SCALE: 1:1



SEE DETAIL B



NOTES:

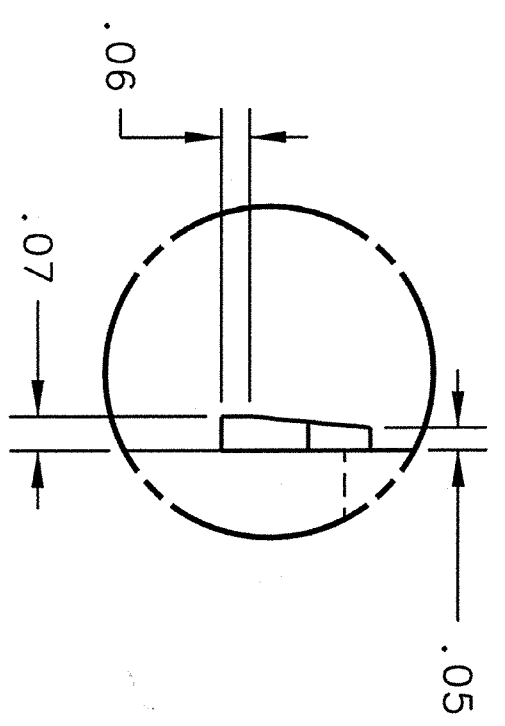
1. CLEAN AND HANDLE FINISHED PARTS PER T JNAF SPECIFICATION 11141-S-0034.

2. DICRONITE DL-5 (OR EQUIVALENT) ALL SURFACES PER MIL SPEC DOD-L-85645 A-TYPE 1.

SUGGESTED SOURCE:

DICRONITE DRY LUBE OF NEW JERSEY
121 N. MICHIGAN AVE.
KENILWORTH, N.J. 07033

PH. 908 241-8222



DETAIL B

SCALE: NONE



DIM & TOL PER ANSI Y14.5 UNLESS OTHERWISE SPECIFIED DIMENSIONS ARE IN INCHES TOLERANCES ARE:
FRACTIONS DECIMAL ANGLES
#N/A .XXX ± .005 ± .50°

MATERIAL
316L STAINLESS STEEL

FINISH 125 UNLESS OTHERWISE NOTED
DEBURR & BREAK ALL SHARP EDGES

DO NOT SCALE DRAWING

| | | | |
|-----------------------------|--|---|--|
| CADD I.D. NO.: 1-DEAS | | SNS DRAWING NO.: 104100201-M8B-8200-A015-R001 | |
| APPROVALS | | DATE | |
| DRAWN C. BUTLER | | 25OCT00 | |
| CHECKED K.H. SMITH | | 27OCT00 | |
| APPROVED JOHN P. HOGAN | | 27OCT00 | |
| APPROVED W. J. SCHNEIDER | | 27OCT00 | |

Thomas Jefferson National Accelerator Facility
NEWPORT NEWS, VIRGINIA
UNITED STATES DEPARTMENT OF ENERGY

SPALLATION NEUTRON SOURCE
CRYMODULE
TUNER
STOP COLLAR - DETAIL

| | | | |
|---------------|-----------------|------------------|-----------------|
| SIZE DWG. NO. | CRM9007030-0014 | REV. | B |
| SCALE | 2:1 & NOTED | USED ON ASSY NO. | CRM9007030-0000 |
| SHEET | 1 | OF | 1 |