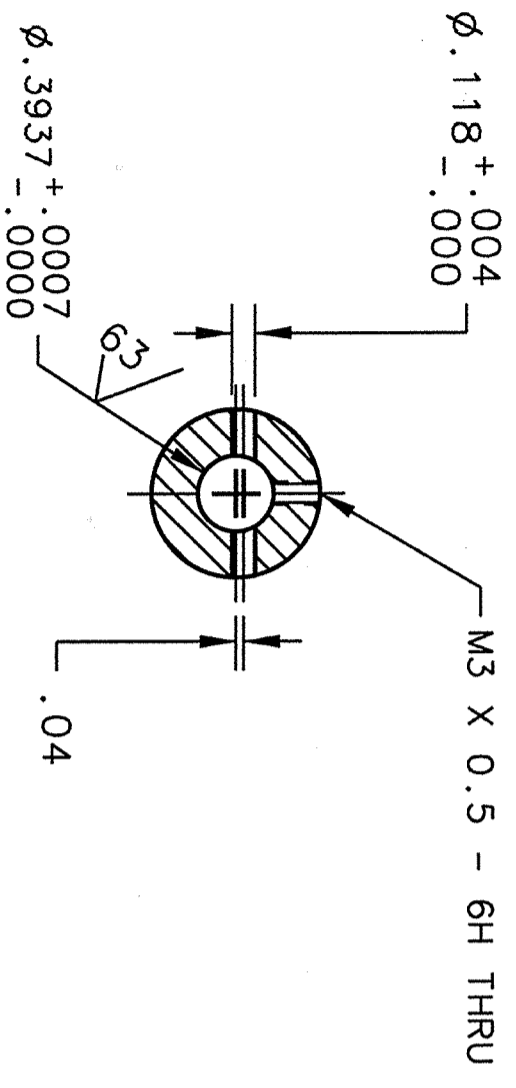


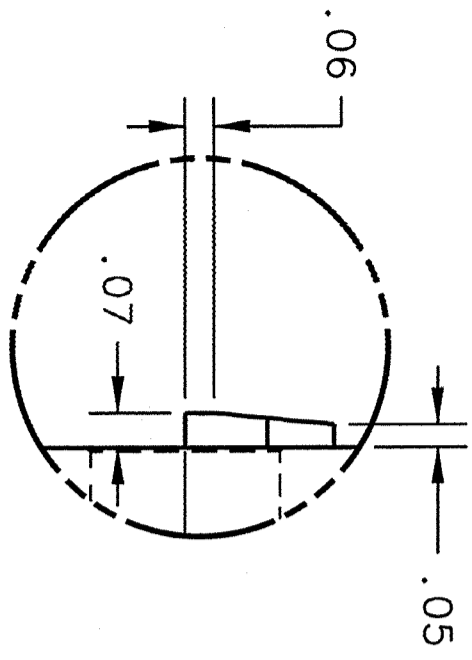
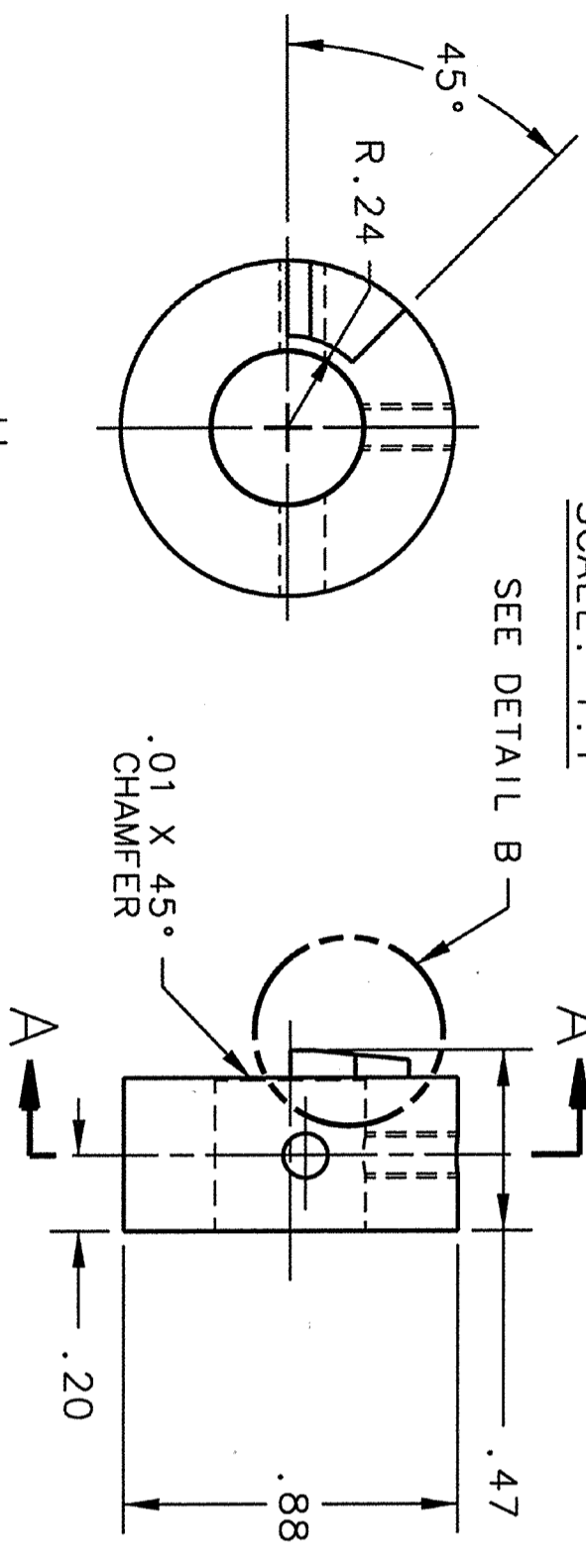
REVISION HISTORY

ZONE	REV	DESCRIPTION	DATE	APPROVED
	A	CHANGED MTL. TO STAINLESS STEEL. KHS JAN 01	26-JAN-2001	J.P.H.
	B	ADDED NOTE 2. KHS FEB 04	24 FEB 04	W J SCHNEIDER
			24 FEB 04	STP



SECTION A-A

SCALE: 1:1



DETAIL B

NOTES:

- CLEAN AND HANDLE FINISHED PARTS PER TUNAF SPECIFICATION 11141-S-0034.
- DICRONITE DL-5 (OR EQUIVALENT) ALL SURFACES PER MIL SPEC DOD-L-85645 A-TYPE 1.

SUGGESTED SOURCE:

DICRONITE DRY LUBE OF NEW JERSEY
121 N. MICHIGAN AVE.
KENILWORTH, N.J. 07033
PH. 908 241-8222



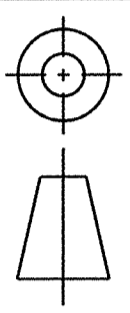
DIM & TOL PER ANSI Y14.5 UNLESS OTHERWISE SPECIFIED DIMENSIONS ARE IN INCHES TOLERANCES ARE:
FRACTIONS DECIMAL ANGLES
±N/A .XXX ±.005 ±.50°

MATERIAL
316L STAINLESS STEEL

FINISH 125 UNLESS OTHERWISE NOTED

DEBURR & BREAK ALL SHARP EDGES

DO NOT SCALE DRAWING



CADD I.D. NO.: 1-DEAS
SNS DRAWING NO.: 104100201-M8B-8200-A016-R001

APPROVALS

DRAWN
C. BUTLER
25OCT00

CHECKED
K.H. SMITH
27OCT00

APPROVED
JOHN P. HOGAN
27OCT00

APPROVED
W.J. SCHNEIDER
27OCT00

Thomas Jefferson National Accelerator Facility
NEWPORT NEWS, VIRGINIA
UNITED STATES DEPARTMENT OF ENERGY

SPALLATION NEUTRON SOURCE
CRYMODULE
TUNER
STOP COLLAR - DETAIL

SIZE DWG. NO. CRM9007030-0015

SCALE 2:1 & NOTED USED ON ASSY NO. CRM9007030-0000 SHEET 1 OF 1

REV. B