

Report to the JLab Users Group Board of Directors

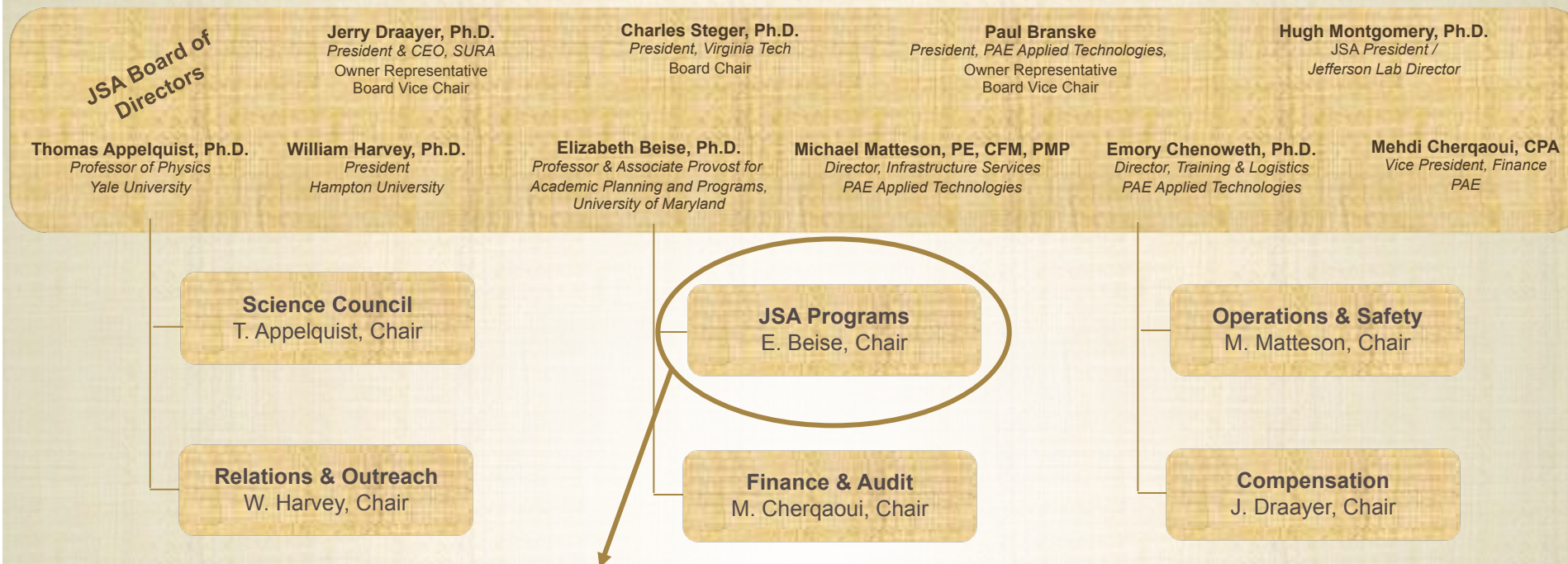
January 22, 2014

**Elizabeth L. Lawson
Chief Governance Officer / Principal JSA/JLab Liaison
SURA Corporate Secretary
JSA Board Liaison and Secretary**

and Applied Technologies Partnership

- ✓ No changes to JSA/DOE M&O contract as result of July sale of ATD by CSC to PAE
- ✓ Continued corporate reach back as expected by DOE and SURA has been assured by PAE
- ✓ SURA and PAE updating Operating Agreement to reflect transition
- ✓ Name change dropping “CSC” reference filed with Virginia SCC and federal agencies and commercial databases
- ✓ Two newly-appointed directors received director and CAS orientation from JSA Board Liaison
- ✓ Jefferson Lab leadership met PAE leadership at October JSA Board meeting and December Ops & Safety meeting

Relationship of JLab Users Group to JSA



Unique in that the Committee reports to both the SURA Board of Trustees and the JSA Board of Directors

- Committee chair is both a member of the SURA Executive Committee and the JSA Board of Directors
- SURA Board appoints a Steering Group, comprised of JSA Directors, SURA Trustees, Users Group past chair, to act for the Committee between meetings
- Ad hoc groups of Committee members, both SURA trustees and non-trustees and user representatives, form to support the work of the Committee
- Committee staff liaison is the chief governance officer of SURA and the Board Liaison to JSA


JSA Programs Committee

~40-member committee with representation from over half of SURA's member schools

Arkansas – Catholic – CNU –
Florida – Florida Atlantic –
Florida Tech – Florida
International – Florida State –
GMU – GWU – Hampton –
Houston – Idaho State – JMU –
Louisiana Tech – UMD – MIT –
Mississippi – Norfolk State –
UNC-CH – NC State – Ohio U –
ODU – Regina – Richmond –
South Florida – Southern
Mississippi – Texas A&M –
Tulane – UVA – Virginia State –
W&M

Steering Group

Elizabeth Beise, Maryland, Chair
Jerry Draayer, SURA/JSA
Gerard Gilfoyle, Richmond
Sebastian Kuhn, ODU
Hugh Montgomery, JSA/JLab
Zisis Papandreou, Regina
Daniel Sober, Catholic
Elizabeth Lawson, SURA/JSA



Full committee meets twice a year in conjunction with SURA Board of Trustees biennial meetings and SURA awards of Distinguished Friend of Science and Distinguished Scientist honors
Next meeting: March 18 at WVU

Responsibilities of the JSA Programs Committee

- Manage and administer the JSA Initiatives Fund
- Foster relations and communications with users and community stakeholders
- Advise SURA on the management and operation of the Residence Facility
- Monitor performance of SURA as administrative and tax member and owner of JSA

Manage and Administer the JSA Initiatives Fund Program

- Owners (SURA and PAE Applied Technologies) committed \$400K for FY2014 program
- Six time-sensitive FY2014 IF projects pre-approved and underway
- Remaining awards to be made Feb/Mar timeframe
- 2006-2013: \$3.5M for over 170 awards
- \$1.4M in support for JLab users from program inception June 2006 – FY2013



\$278K Users Group awards, prizes, activities, and projects

\$132K for sabbatical support

JSA Accepting Applications for Sabbatical and Research Leave Support at the Jefferson Lab
About the JSA/Jefferson Lab Sabbatical and Research Leave Support Program
JSA will award living expenses up to \$1,000 per month for up to twelve months to qualified faculty members to relocate to the Hampton Roads area to conduct full-time research at the Jefferson Lab in Newport News, Virginia, while on an approved sabbatical or research leave.
Purpose
The JSA/Lab Sabbatical and Research Leave Support Program enhances research opportunities for faculty through access to Jefferson Lab facilities and interaction with Lab researchers and users, strengthens the teaching and research capabilities of universities through faculty involvement, and strengthens the research programs of the Lab by attracting "new blood" and integrating university faculty members in the Lab's programs.
Eligibility
Applicants must be regular, tenured or non-tenured, faculty from a university associated with the Jefferson Lab. Applicants should provide the approval of their home institutions for sabbatical or research leave for the period for which JSA support is requested. Individuals are limited to a maximum of 12 months of support in a five-year period. Faculty members who are retired or retiring, seeking only summer support, are not eligible for JSA support. Faculty members who are on a sabbatical or research leave at a Jefferson Lab joint appointment, or living within 50 miles of the Lab are not eligible for JSA Sabbatical Support awards.
Important Dates
Application materials are due by **February 26, 2013**. Support for awards made for the first time will begin as early as June 2013. Upon request from the awardee, JSA will consider



\$804K for graduate fellowships



\$224K for meetings, workshops and conferences



FY2014 JSA Initiatives Fund Program

2014 Evaluation Committee

Dr. Elizabeth Beise, University of Maryland, Chair

Dr. David Armstrong, College of William & Mary

Dr. Jerry Gilfoyle, University of Richmond

Dr. Robert McKeown, Jefferson Lab

Dr. Zein-Eddine Meziani, Temple University

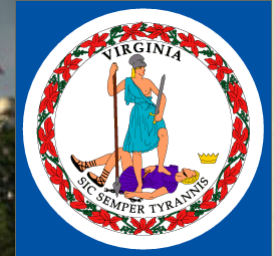
Dr. Zisis Papandreou, University of Regina

Dr. Daniel Sober, The Catholic University of America

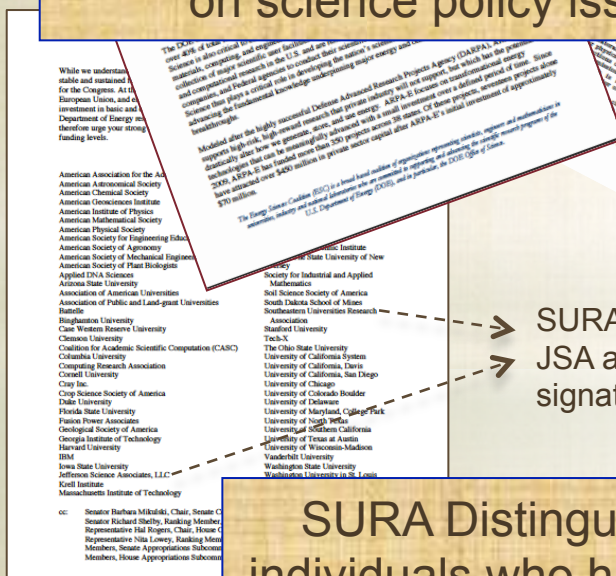
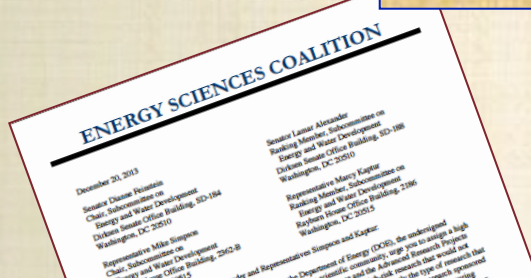
Ms. Elizabeth Lawson, SURA / JSA

- **JSA Board updated Initiatives Fund policy October 2013**
- **Call for proposals issued November 15 and due December 23**
- **Time-sensitive projects pre-approved and are underway**
 - **Director's Discretionary**
 - **JSA Graduate Fellowship Program**
 - **Economic Impact Study**
 - **Users Group JSA Post Doc Research Grant**
 - **Users Group Annual Meeting Support**
 - **Users Group Awards: Thesis and Poster Prizes**
- **First round review of 18 proposals with user PI's by Lab Users Group Board**
- **First round review of 18 proposals with Lab PI's by Lab management group**

Provides for federal and state lobbying firms to work on funding strategies



Actively involved with TFAI, AAAS, and ESC enabling input on science policy issues and funding scenarios



→ SURA and
→ JSA among
signatories



SURA Distinguished Friend of Science Award honors individuals who have supported SURA's science mission

SURA's Relations & Outreach Program

- Annual value of at least \$250K includes engagement of relations firms at the federal (Van Scoyoc) and state (Kay Kemper) levels, plus SURA's relations director et. al.
- Program also includes effective relationships with DOE officials, local and regional authorities, universities, industry and business leaders
 - ✓ Coordinated Lab users to meet with Hill representatives and staffers at Nuclear Physics Capitol Hill day
 - ✓ Made visits and held discussions with federal legislators on FY2014 budget, sharing briefing papers and discussing impact of budget shortfall
 - ✓ Worked with FRIB and RHIC leadership and government relations professional to advocate for NP funding
 - ✓ Worked with federal and state legislators to address FEL funding situation, including implementation of \$3M state support for FEL upgrade
 - ✓ Met with Virginia legislators, executives and agencies to discuss continued support for Lab (2014-2016 biennial budget)
 - ✓ Met with SC to discuss governance matters, Lab science program and 12-GeV project status, relations efforts, and Lab involvement with other DOE initiatives
 - ✓ Met with City of NN, local developer, and VA Tech Research Foundation re. Oyster Point land development

SURA's Relations & Outreach Program

SURA Residence Facility



Residence Facility

SURA provides 42-room guest house on campus for use by Lab visitors and guests, managed and operated on break-even basis, forgoing 55% G&A to hold room rates below GSA per diem. Last increase 4/1/12

Current rates: \$65/\$55/\$45

FY2013 Operating Results

- Revenues of \$346.2K, 44.4% occupancy
- Operating expenditures of \$408.7K: 99% fixed

FY2014 Operating Budget

- Revenues of \$370K, 45% occupancy
- Operating expenditures of \$378K

Occupancy Comparisons for CY2013 thru Sept

(¹Source: Smith Travel Research)

	Occupancy	ADR
¹ NN/Hampton	58.7%	\$64.78
¹ Williamsburg	45.7%	\$92.34
¹ Virginia	59.4%	\$99.19
¹ United States	63.9%	\$110.38
Residence Facility	48.6%	\$54.35

GSA lodging per diem: \$77.00

Guest evaluation (29% response rate) of overall quality of service, 1-10 scale:

✓ Over 95% rated 8, 9, or 10

✓ < 5% rated 7 or 5