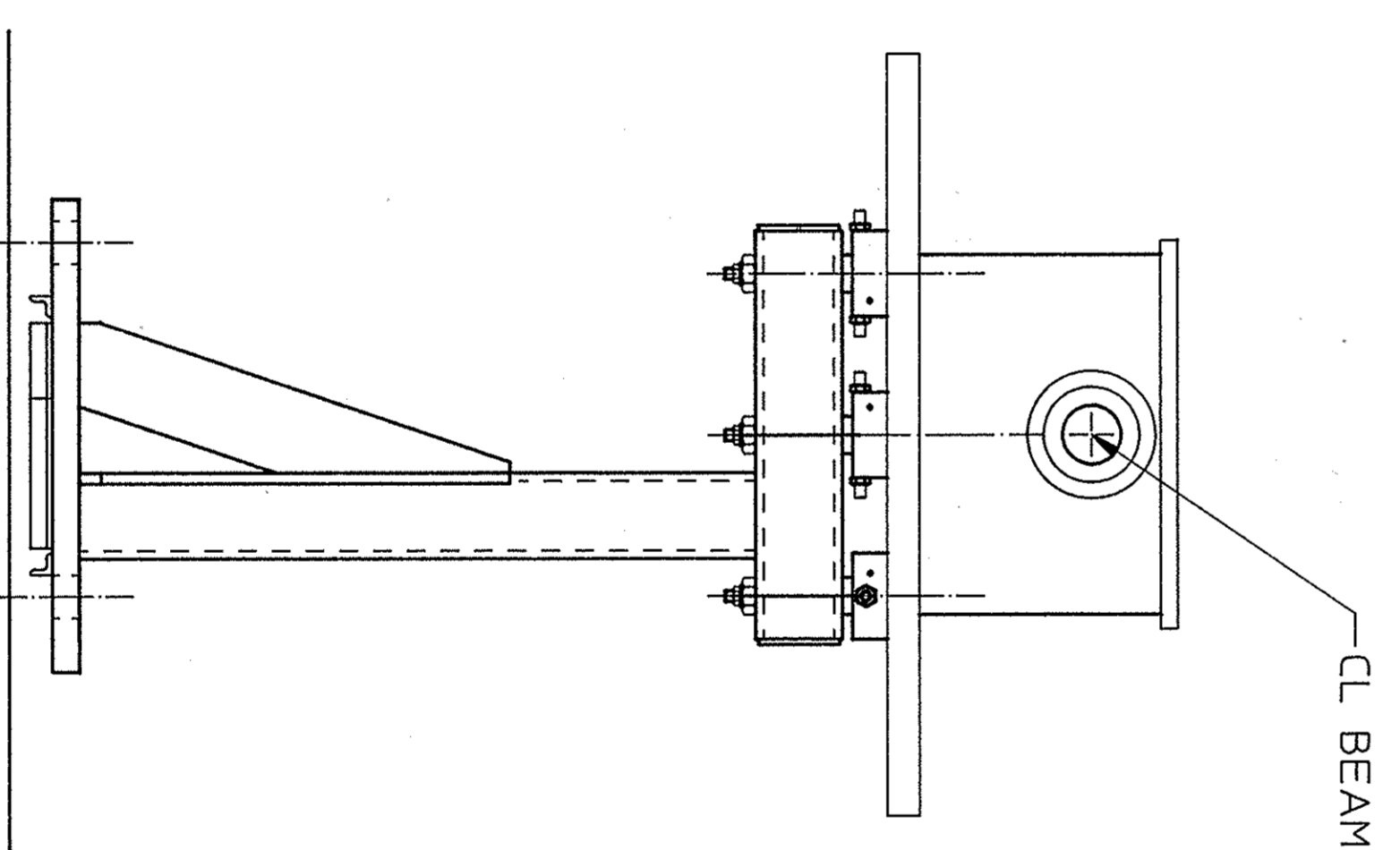
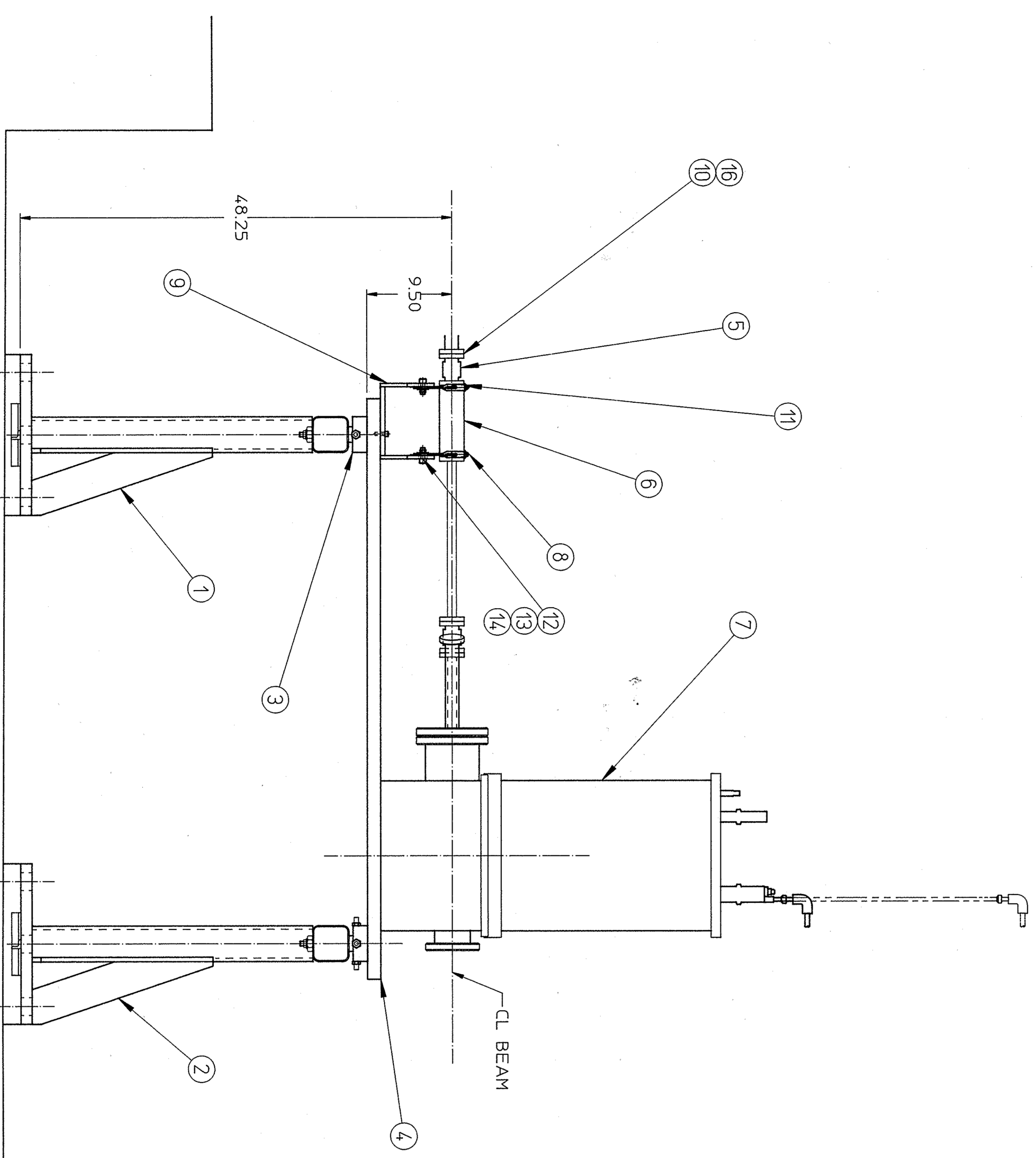
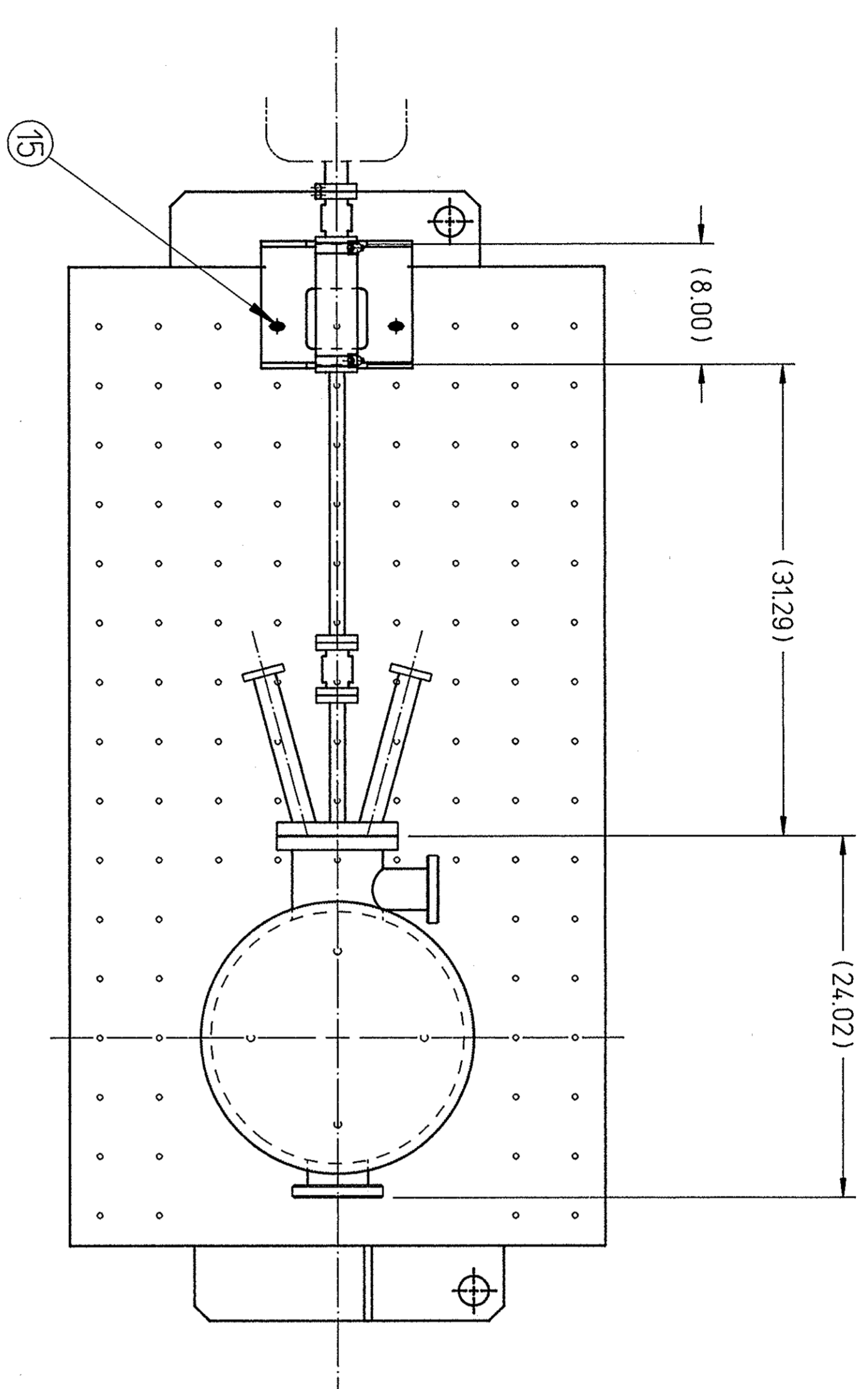


ZONE	REV	DESCRIPTION	DATE	APPROVED
A	1	ADDED MDC POLYMER BELLOWS & VALVE TO MENS & PARTS LIST.	03/14/94	G BALLAS
B	2	DEL ITEM 5 & 6 VALVE & WELDED BELLOWS ADD STD BELLOWS BEM & SPT PLATE TO 0.8 THRU TO SHOW NEW ENHANCED SCALE 1/25 1/99	03/15/94	W. OWEN



NOTES:
1 THE TWO (2) CARTRIDGE PEDESTAL IS LOCATED ON THE DOWNSTREAM END OF THE ASSEMBLY.

QTY	ITEM NO.	DESCRIPTION	MATERIAL	REVISIONS	NOTES
1	16	MDC 191004	0275 GASKET		
2	15	038-13UNC X 100 L6	STAINLESS STEEL		
4	14	050-13UNC NUT	STAINLESS STEEL		
4	13	050-13UNC FLAT WASHER	STAINLESS STEEL		
4	12	050-13UNC X 12BL6	STAINLESS STEEL		
12	11	MDC 190041	0250-28UNC 12 PT X .875 L6		SILVER PLATED
1	10	22661-B-0146-01	CONCAT FLANGE ASSY THRU HOLES		
1	9	22521-C-1026	BPM SUPPORT BRACKET		
2	8	28471-C-0013	POSITIONING LABEL		
1	7		POLYMER CHAMBER		
1	6	58432-D-0156	BEAM POSITION MONITOR		
1	5		BELLOWS, 0275 FLANGES		
1	4	22521-E-0902	BASE PLATE		
3	3	22512-E-0001	ADJUSTMENT CARTRIDGE		
1	2	22521-E-0901	DOWNSTREAM PEDESTAL		
1	1	22521-E-0900	UPSTREAM PEDESTAL		

REV	DATE	DESCRIPTION
1	02/02/94	ISSUED FOR FAB
2	02/02/94	ISSUED FOR FAB

28401-E-0900
SHEET 1 OF 1

