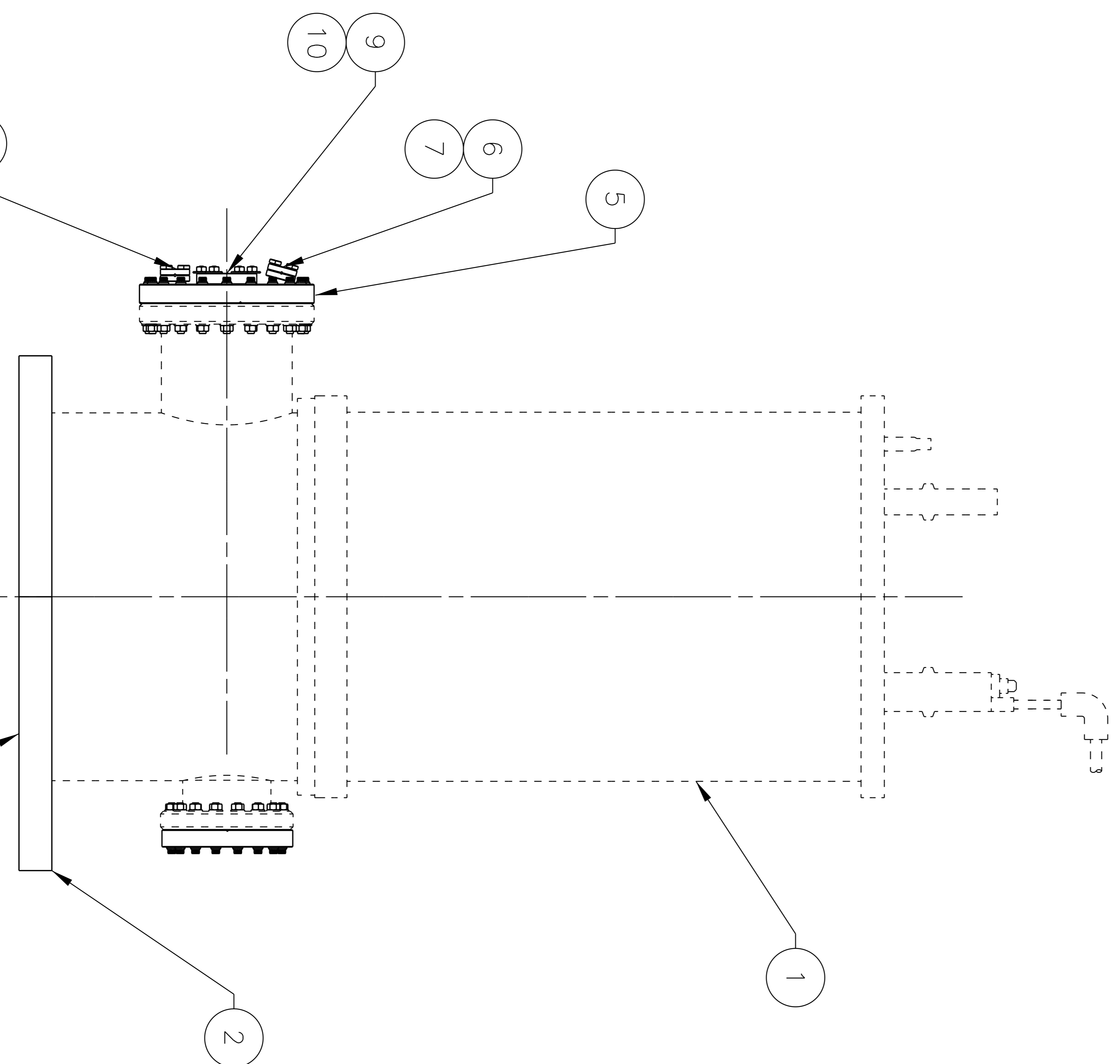


NOTES:  
1. PART TO MEET CEBAF (JLAB) SPECIFICATIONS:

a. CLEANING AND HANDLING OF U.H.V. COMPONENTS: #22632-S-001  
b. STAINLESS STEEL FLANGES FOR UHV APPLICATIONS: #23661-S-001

2. PROTECT SEALING SURFACES DURING ASSEMBLY AND SHIPPING. ANY DENTS SCRATCHES AND NICKS TO FLANGE KNIFE WILL RENDER THE FLANGE AS SCRAP.

3. USE EXISTING HARDWARE FOR MOUNTING ITEMS 1 AND 2 TOGETHER.



QTY	ITEM	PART OR IDENTIFYING NO.	NOMENCLATURE OR DESCRIPTION	MATERIAL SPECIFICATION	NOTES
1	1	-	POLARIMETER CHAMBER	-	-
1	2	EXP2457084-0025	SCATTERING CHAMBER BASE PLATE	-	-
1	3	MDC - 110025 OR JLAB APVD EQ	FLANGE, 6.0 CF BLANK	-	-
1	4	VAC5000133-0001-07	6.0 CONFLAT HARDWARE THRU HOLES WITH BOLTS	-	-
1	5	VAC5501212-4006	8.0 X 2.75 CF REDUCER W/1.33 PORTS	-	-
2	6	MDC - 450000 OR JLAB APVD EQ	VIEWPORT, 1.33 CF ZERO PROFILE	-	-
2	7	VAC5000133-0002-01	1.33 CONFLAT HARDWARE THRU TAPPED HOLES WITH BOLTS	-	-
1	8	VAC5000133-0001-09	8.0 CONFLAT HARDWARE THRU HOLES WITH BOLTS	-	-
1	9	MDC - 110008 OR JLAB APVD EQ	FLANGE, 2.75 CF BLANK	-	-
1	10	VAC5000133-0002-03	2.75 CONFLAT HARDWARE THRU TAPPED HOLES WITH BOLTS	-	-

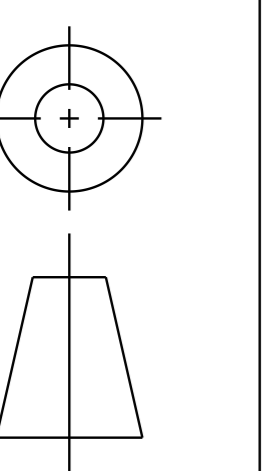
## DOCUMENT CONTROL STAMP

MATERIAL: SEE PARTS LIST

FINISH: 125 UNLESS OTHERWISE NOTED  
SURFACES: UNLESS OTHERWISE NOTED  
SHARPEN & BREAK ALL SHARP EDGES  
DO NOT SCALE DRAWING

DATA & TOLERANCES SPECIFIED UNLESS OTHERWISE SPECIFIED. DIMENSIONS ARE IN INCHES. ANGLES ARE IN DEGREES. DECIMAL FRACTIONS: .XXX ± .005. .XX ± .01. .X ± .1. ± .50\*

THIRD ANGLE PROJECTION



TRACKING NO. N/A

APPROVALS: DRAWN: R.D. LASSITER  
CHECKED: DATE: 04MAY09

APPROVED: APPROVED

United States Department of Energy  
Jefferson Lab  
Thomas Jefferson National Accelerator Facility

EXP OWEAK GIRDERS  
MLLR PLRMTR SCATTERING CHAMBER ASSY

SIZE DWG. NO. EXP-245-7084-0024  
SCALE 3:16 (ISO OR ASS'N. ACC0353501-0002) SHEET 1 OF 1

A

B

C

D

A

B

C

D