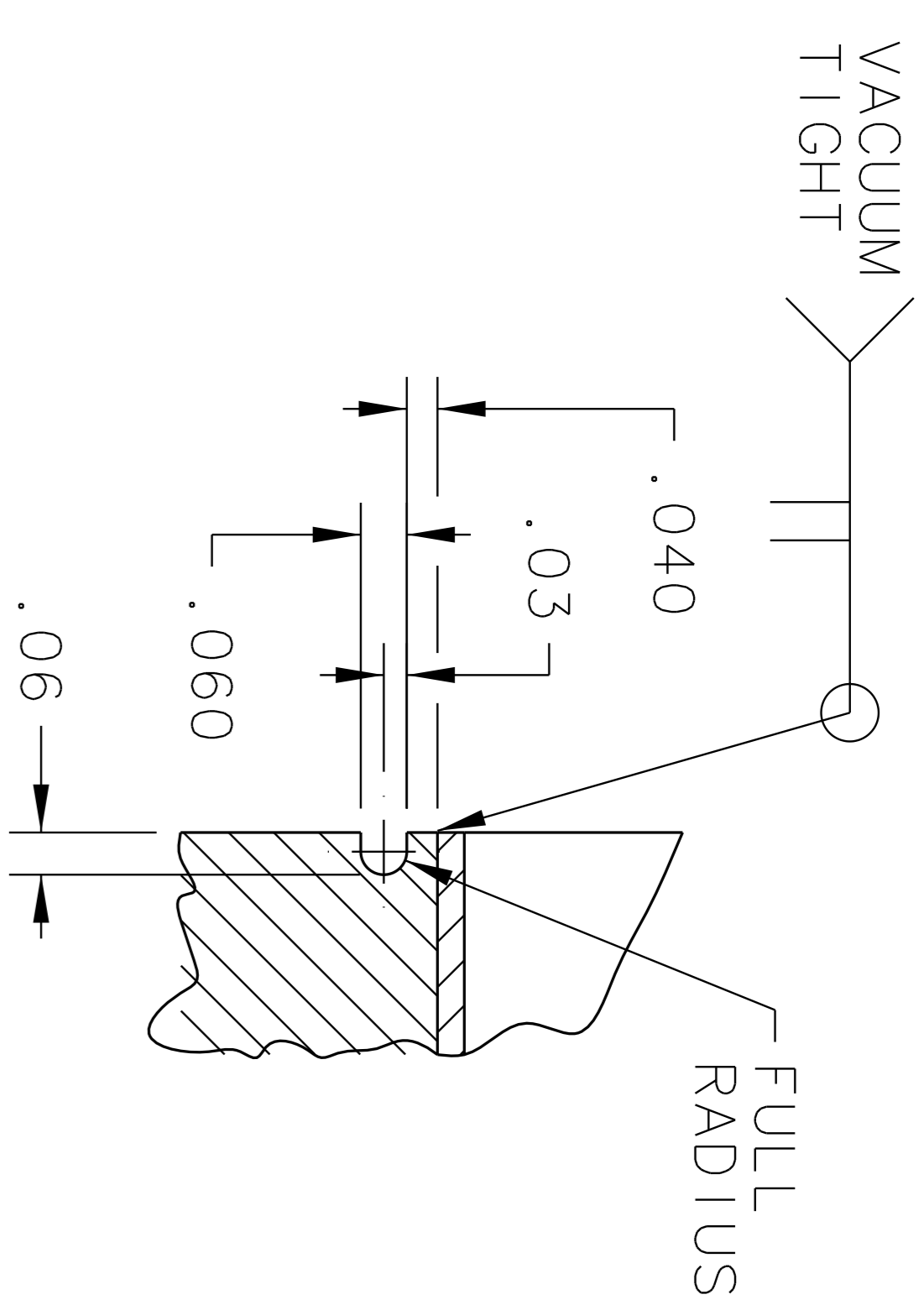
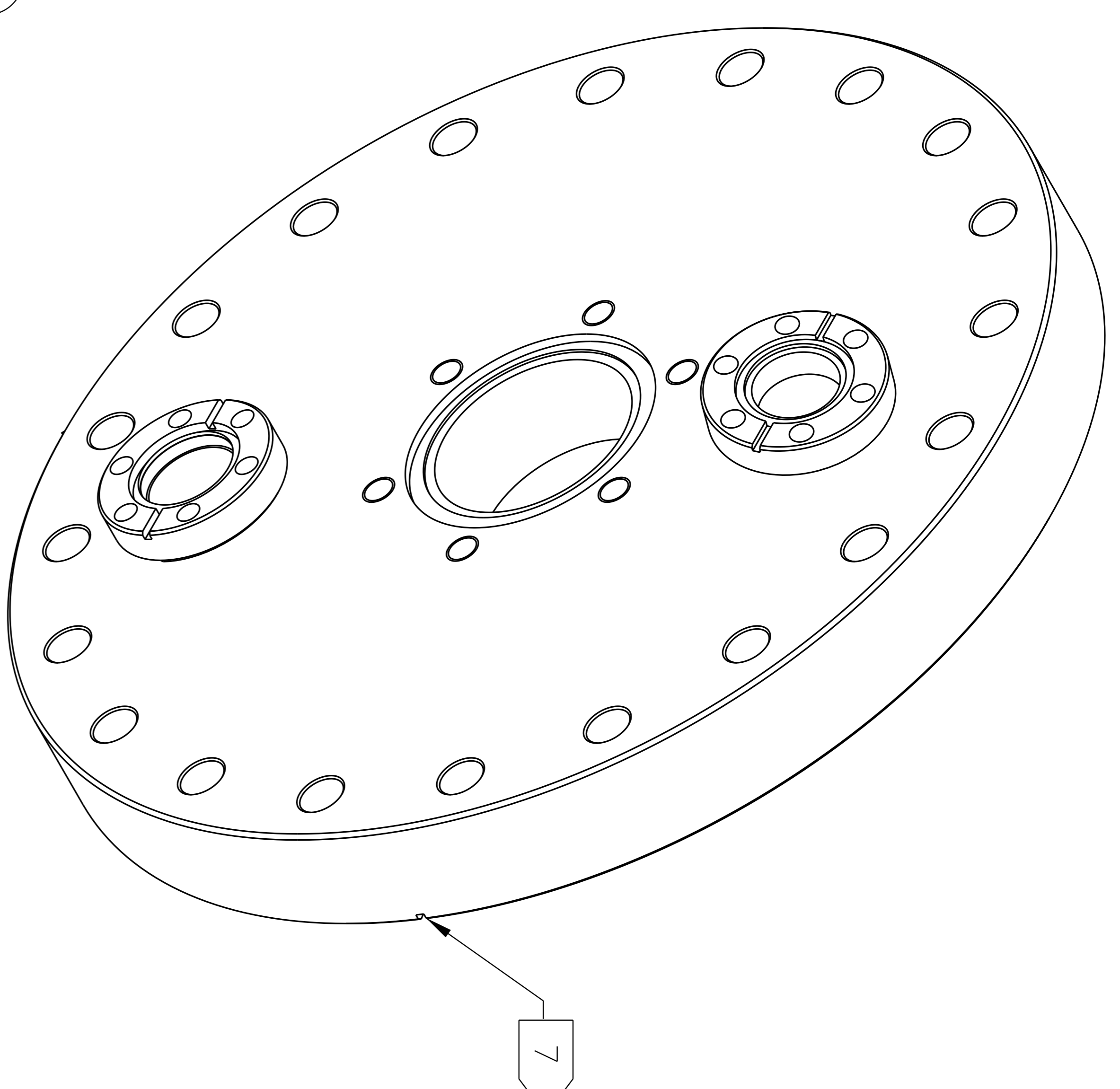
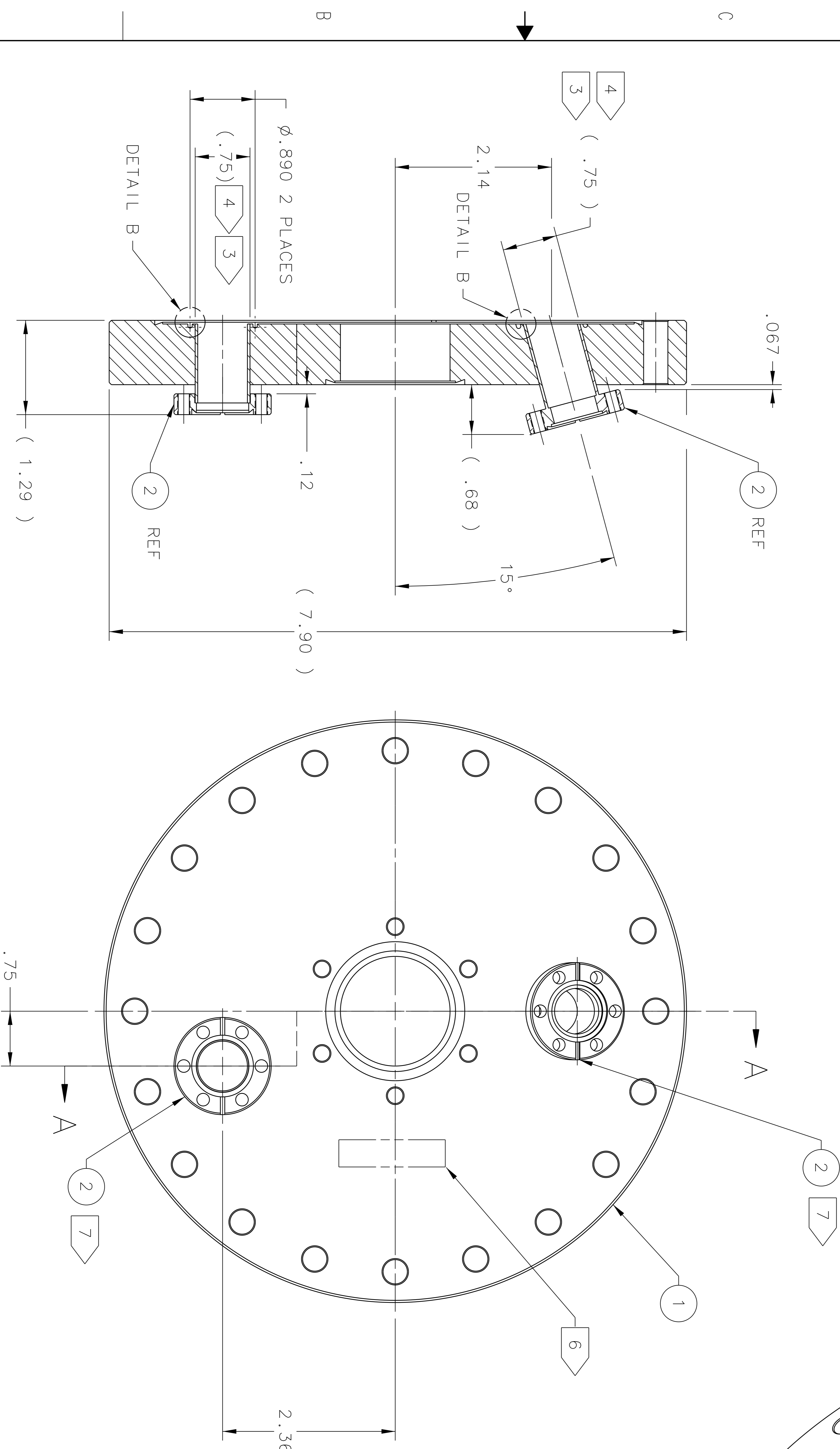


ZONE	REV	DESCRIPTION	DATE	APPROVED

REVISION HISTORY



DETAIL B
TYPICAL 2 PLACES
SCALE 3:1



SECTION A-A

NOTES:

- PART TO MEET CEBAF (JLAB) SPECIFICATIONS:
 - FABRICATION OF ULTRA HIGH VACUUM EQUIPMENT: #22631-S-001
 - CLEANING AND HANDLING OF U.H.V. COMPONENTS: #22632-S-001
 - WELDING SPECIFICATIONS FOR U.H.V. COMPONENTS: #22633-S-001
 - HELIUM LEAK TEST FOR U.H.V. COMPONENTS: #22634-S-001
 - CEBAF (JLAB) QA SPECIFICATION: #91790-200
 - STAINLESS STEEL FLANGES FOR UHV APPLICATIONS: #23661-S-001
- PROTECT SEALING SURFACES DURING FABRICATION AND SHIPPING. ANY DENTS SCRATCHES AND NICKS TO FLANGE KNIFE WILL RENDER THE FLANGE AS SCRAP.
- PURGE INSIDE OF TUBE WITH INERT GAS DURING WELDING.
- MATCH BORE HOLES TO SUIT TUBING.
- ALL TOLERANCES APPLY AFTER WELDING.
- PART NUMBER TO BE ENGRAVED OR ETCHED IN LOCATION SHOWN USING MIN .25 HIGH CHARACTERS.
- ALIGN LEAK CHECK GROOVES AS SHOWN FOR ITEMS 1, 2 & 3.

QTY	ITEM	IDENTIFYING NO.	NOMENCLATURE OR DESCRIPTION	PARTS LIST	MATERIAL SPECIFICATION	NOTES
2	M/F MDC 401021 OR JLAB APVD EQ		HALF NIPPLE, 1.33 CF (TAPPED) X .75 TUBE			
1	MDC 150029 OR JLAB APVD EQ		FLANGE, 8.0CF X 2.75CF REDUCER			

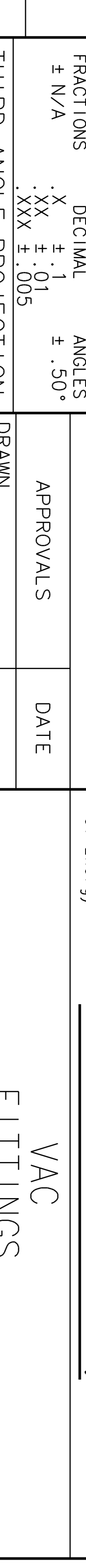
DOCUMENT CONTROL STAMP

DATE & TIME	BY	DESCRIPTION

UNLESS OTHERWISE NOTED SURFACES & BREAK ALL SHARP EDGES

DATE	APPROVALS	DATE	APPROVALS
21APR09	R.D. LASSITER		

THIRD ANGLE PROJECTION



FINISH 125 UNLESS OTHERWISE NOTED SURFACES & BREAK ALL SHARP EDGES

SCALE	UNIT STATES	SI
1:1	INCHES	MILLIMETERS

DO NOT SCALE DRAWING

UNIT STATES	SI
INCHES	MILLIMETERS

SCALE	UNIT STATES	SI
1:1	INCHES	MILLIMETERS