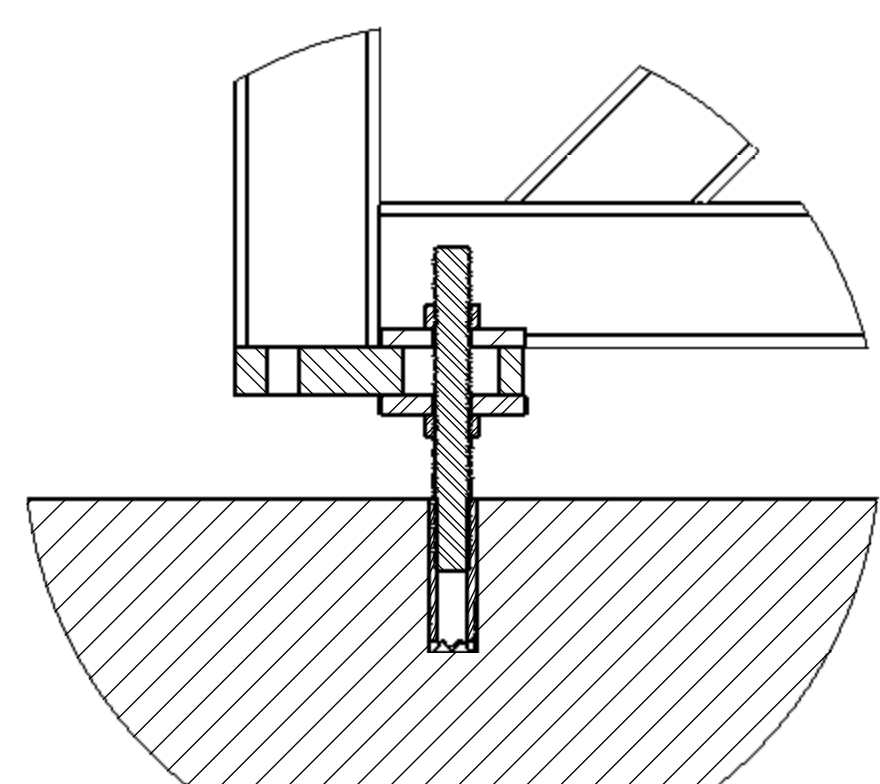
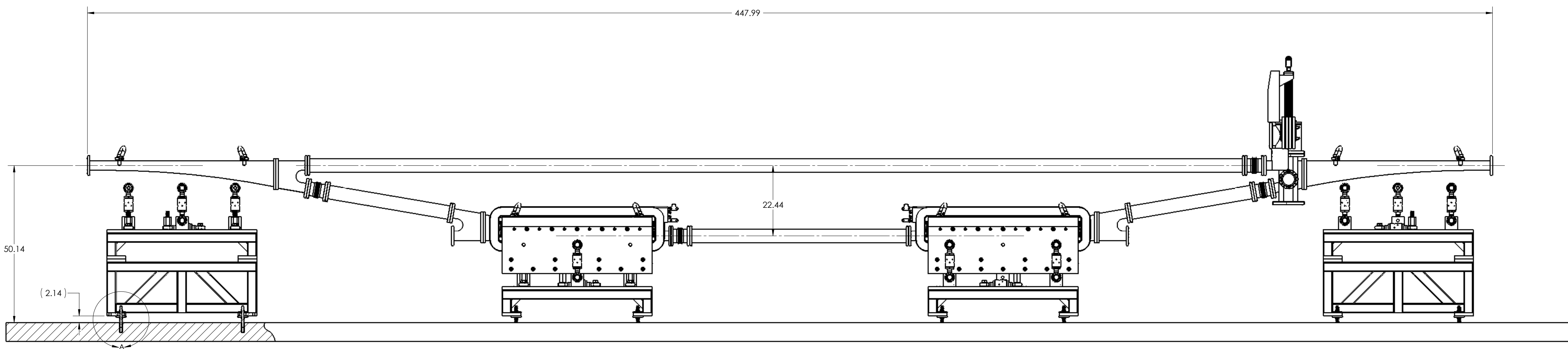
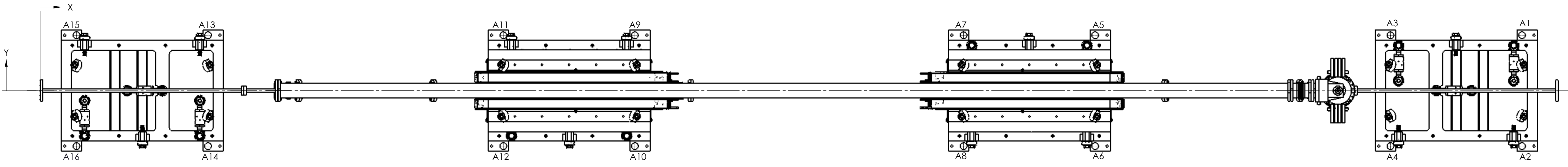


Tag	X LOC	Y LOC	SIZE
A1	437.29625	16.32500	Ø2.00 THRU
A2	437.29625	-16.32500	Ø2.00 THRU
A3	398.47625	16.32500	Ø2.00 THRU
A4	398.47625	-16.32500	Ø2.00 THRU
A5	311.31739	16.32500	Ø2.00 THRU
A6	311.31739	-16.32500	Ø2.00 THRU
A7	272.49739	16.32500	Ø2.00 THRU
A8	272.49739	-16.32500	Ø2.00 THRU
A9	175.49061	16.32500	Ø2.00 THRU
A10	175.49061	-16.32500	Ø2.00 THRU
A11	136.67061	16.32500	Ø2.00 THRU
A12	136.67061	-16.32500	Ø2.00 THRU
A13	49.51175	16.32500	Ø2.00 THRU
A14	49.51175	-16.32500	Ø2.00 THRU
A15	10.69175	16.32500	Ø2.00 THRU
A16	10.69175	-16.32500	Ø2.00 THRU



DETAIL A
SCALE 1:4

REV.	REV. STATUS	REV. DATE
1	ISSUED	11/17/08
2	REVISED	11/17/08
3	REVISED	11/17/08
4	REVISED	11/17/08

AREA	SIGNATURE	DATE
VAC		
INSTR		
MAG		
OPS		
ALIGN		
OTHER		
COST		

AREA	SIGNATURE	DATE
VAC		
INSTR		
MAG		
OPS		
ALIGN		
OTHER		
COST		

APPROVALS	DATE
DRAWN C. VIDAL	11/17/08
CHECKED E. BLOFF	11/17/08
APPROVED E. BLOFF	11/17/08
APPROVED J. KELSOY	11/17/08

TRACKING NO.	DATE
N/A	

Thomas Jefferson National Accelerator Facility
SCIENTIFIC FACILITY DIVISION
 COMPTON POLARIMETER LAYOUT

EXP-245-7082-0100

1:1.6 US 94 801 W (copy to sheet) SHEET 2 OF 2