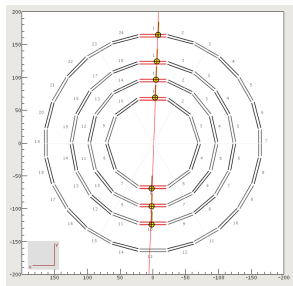
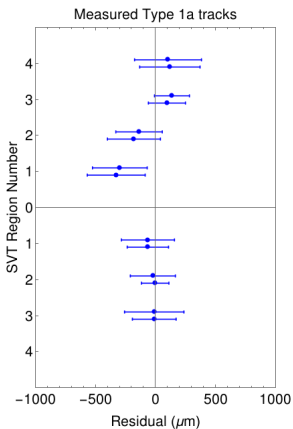


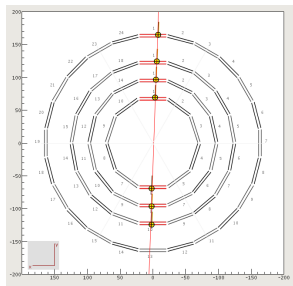
# Check alignment with Type1a cosmic ray tracks



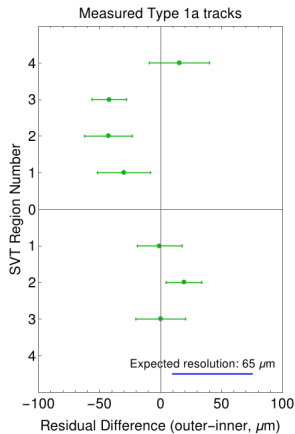
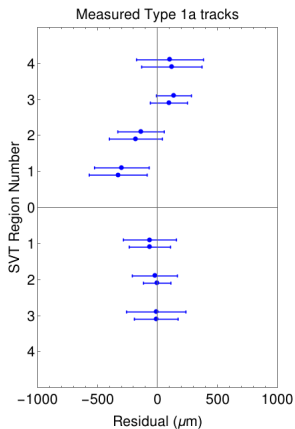
Type 1a tracks.



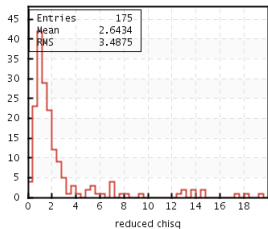
# Check alignment with Type1a cosmic ray tracks



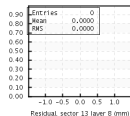
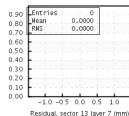
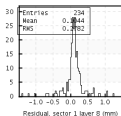
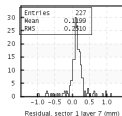
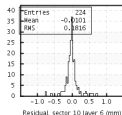
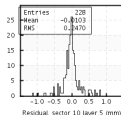
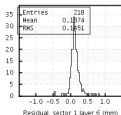
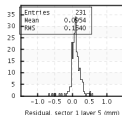
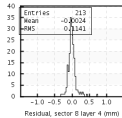
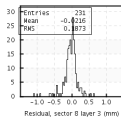
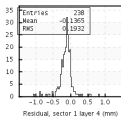
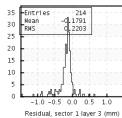
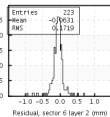
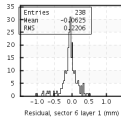
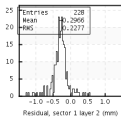
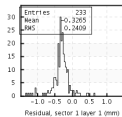
Type 1a tracks.



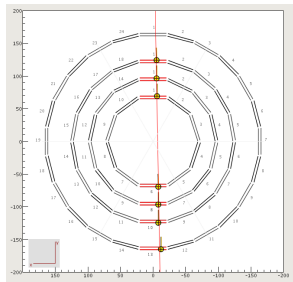
# Residuals for Type 1a measured cosmic ray tracks



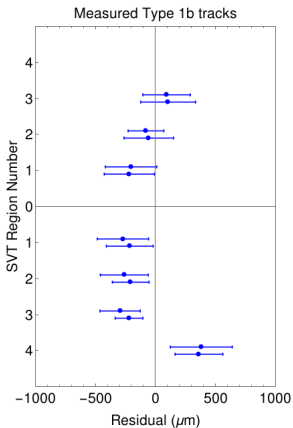
For Type 1a tracks,  
 $\chi^2/\nu \leq 20$



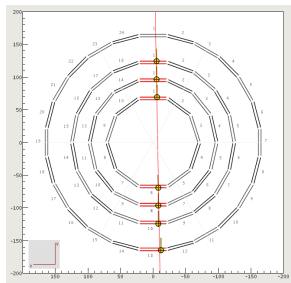
# Check alignment with Type1b cosmic ray tracks



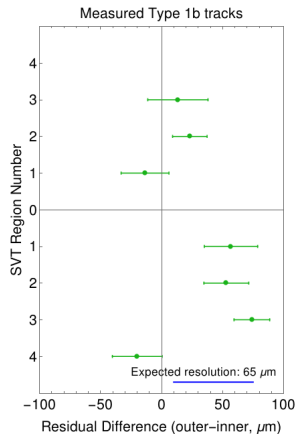
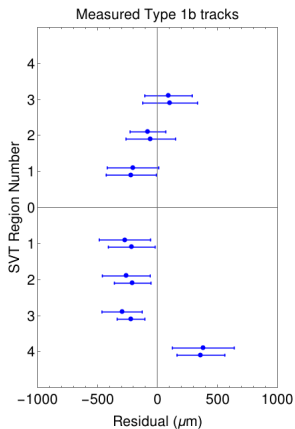
Type 1b tracks.



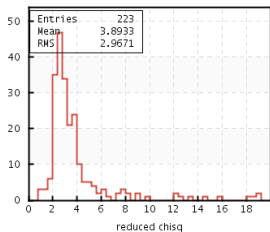
# Check alignment with Type1b cosmic ray tracks



Type 1b tracks.



# Residuals for Type 1b measured cosmic ray tracks



For Type 1a tracks,  
 $\chi^2/\nu \leq 20$

