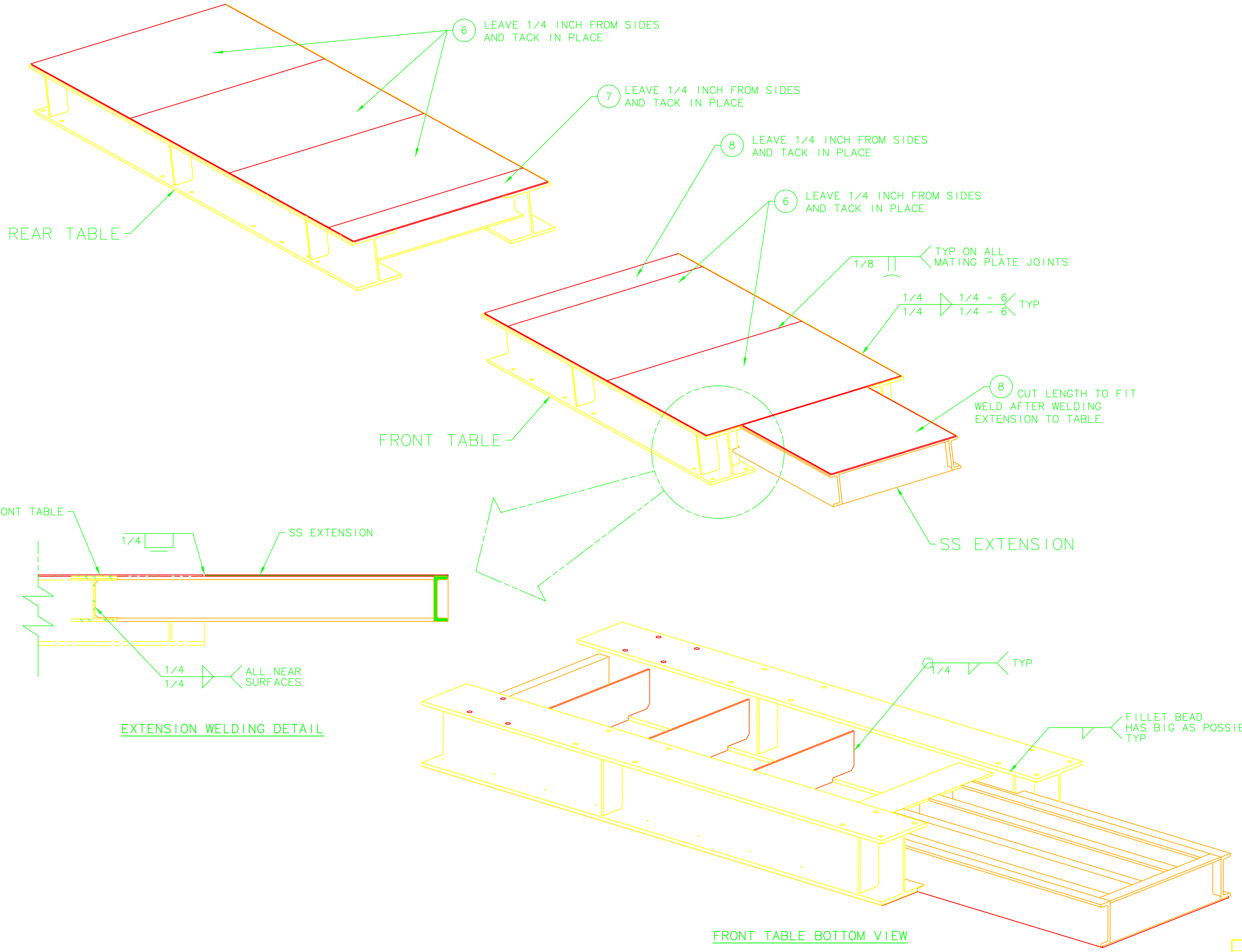


TABLE MODIFICATION
CUT EXISTING TABLE IN TWO PARTS



NOTE:
 1. THIS IS A CLASS 'A' WELDMENT.
 2. ALL STAINLESS STEEL MATERIAL MUST HAVE MATERIAL CERTIFICATIONS.
 3. FILLER MATERIAL TO BE 304 OR 308 SS ON ALL SS EXTENSION.
 4. USE WPS-002 AND INSPECT TO D1.6 FOR SS WELDMENTS.
 5. USE WPS-004 AND INSPECT TO D1.1 FOR DISSIMILAR METAL WELDMENTS.
 6. USE WPS-009 AND INSPECT TO D1.1 FOR CARBON STEEL WELDMENTS.

QTY	ITEM NO.	PART OR IDENTIFYING NO.	DESCRIPTION OR PARTS LIST	MATERIAL SPECIFICATION	NOTES
1	7	-	PLATE 3/8 THICK X 34 X 43	304 SS	1
1	6	-	PLATE 3/8 THICK	STEEL	-
6	5	-	PLATE 3/8 MIN X 8 X 41 1/2	STEEL	-
1	4	-	CHANNEL 8 X 18.8#/FT X 26 L	304 SS	1
4	3	-	CHANNEL 8 X 18.8#/FT X 56 1/8 L	304 SS	1
2	2	-	CHANNEL 8 X 18.8#/FT X 43 1/4 L	304 SS	1
2	1	-	PLATE 2 X 12 X 62 1/2	304 SS	1

APPROVALS	DATE	DOCUMENT CONTROL STAMP	DIM & TOL PER ASME Y14.5 - UNLESS OTHERWISE SPECIFIED DIMENSIONS ARE IN INCHES TOLERANCES ARE FRACTIONS DECIMAL ANGLES ± 1/32 ± .01 ± .015 ± .005 ± .001 ± .001 ± .001 ± .001	TRACKING NO. 67503	United States Department of Energy Jefferson Lab Newport News Virginia
		MATERIAL SEE BOM	THIRD ANGLE PROJECTION	APPROVALS DATE	HALL - C QWEAK EXPERIMENT PB TABLE SETUP/INSTALL TABLE MODIFICATION
		FINISH MACHINED SURFACES DEBURR & BREAK ALL SHARP EDGES	UNLESS OTHERWISE NOTED	DRAWN MEDEIROS 8/10/08	SIZE DWG. NO. E 67503-E-00017
		DO NOT SCALE DRAWING		CHECKED	SCALE 3/32 USED ON ASSY NO. 67503-E-00018 SHEET 1 OF 2