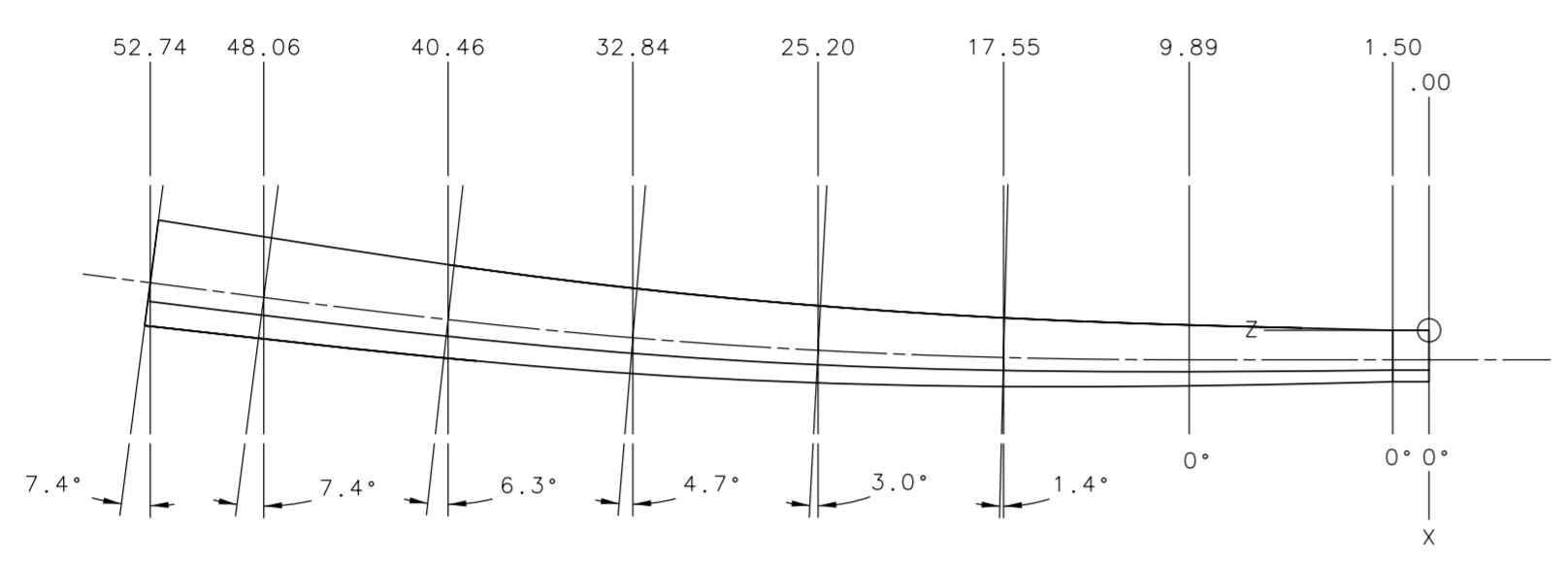
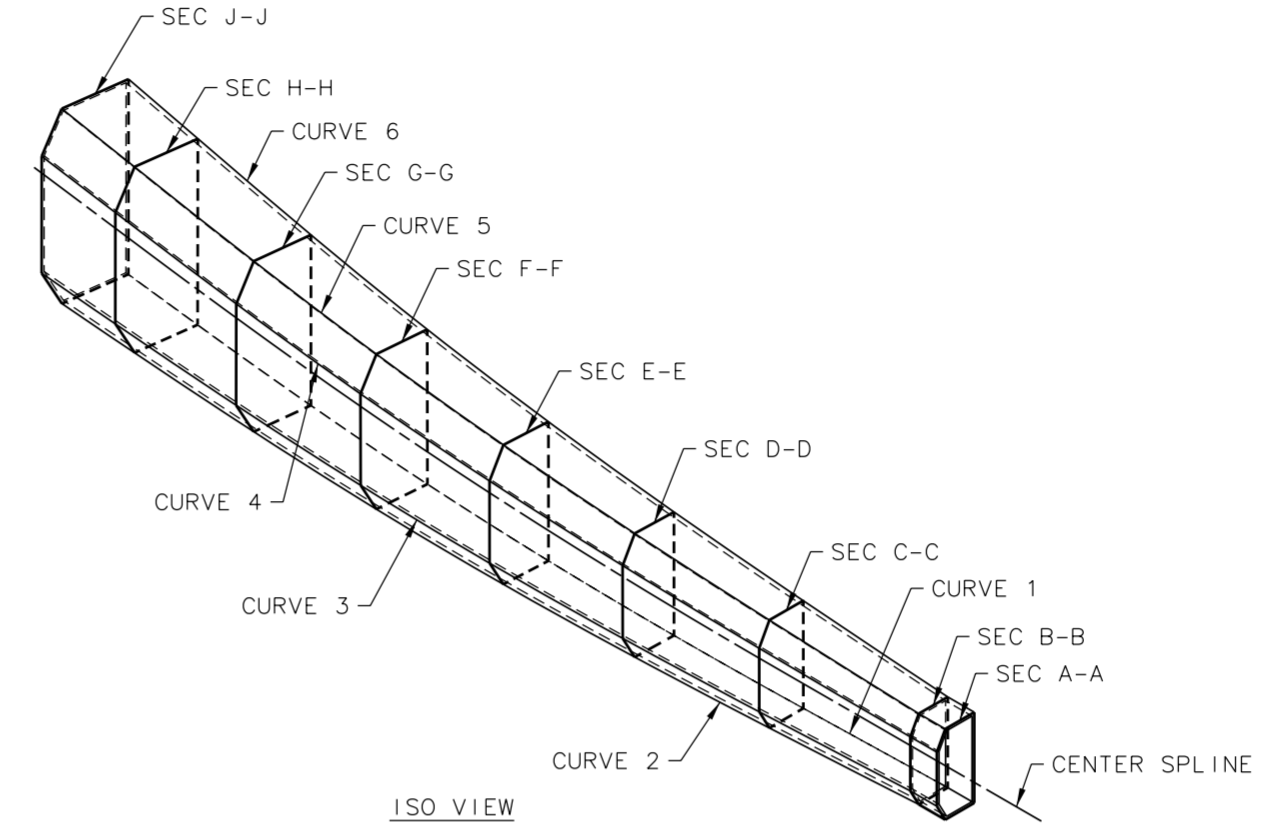


REVISION HISTORY				
ZONE	REV	DESCRIPTION	DATE	APPROVED

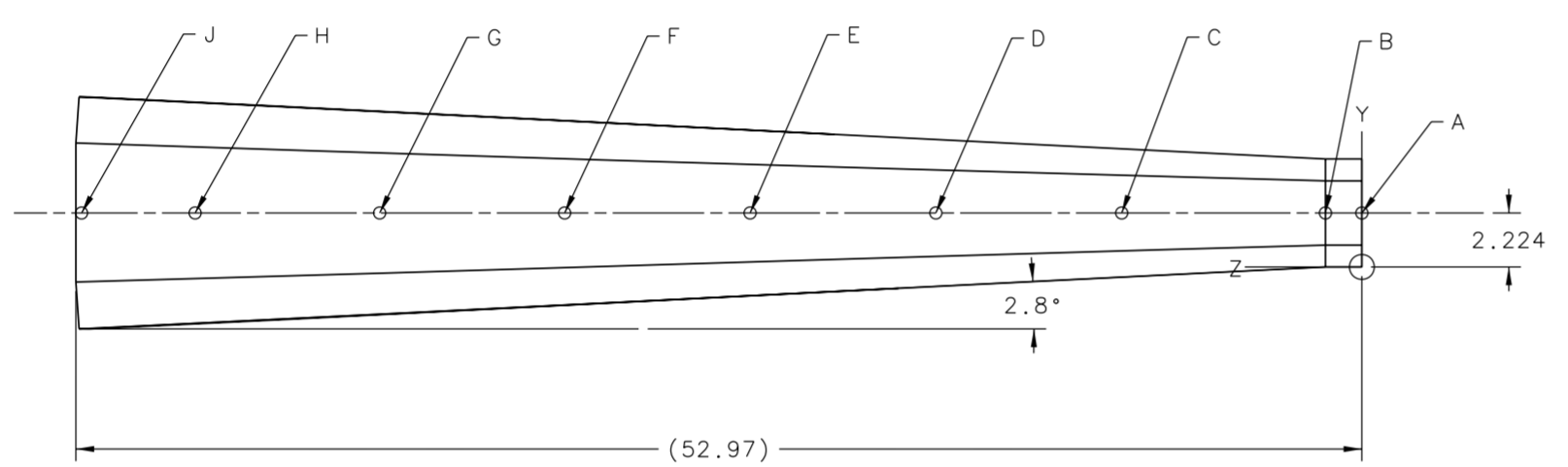


TOP VIEW

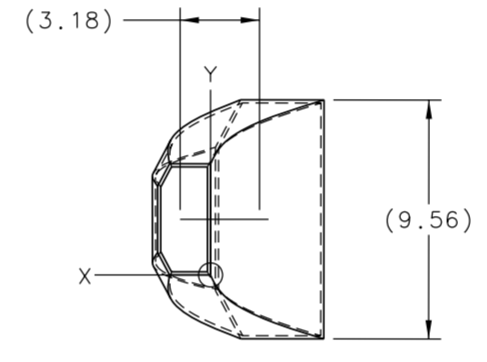
NOTE:
ALL SECTIONS TAKEN PERPENDICULAR TO THE CENTER SPLINE AND ANGLES ARE WITH RELATION TO THE COORD. SYSTEM AT REF PT A-1.



ISO VIEW



FRONT VIEW



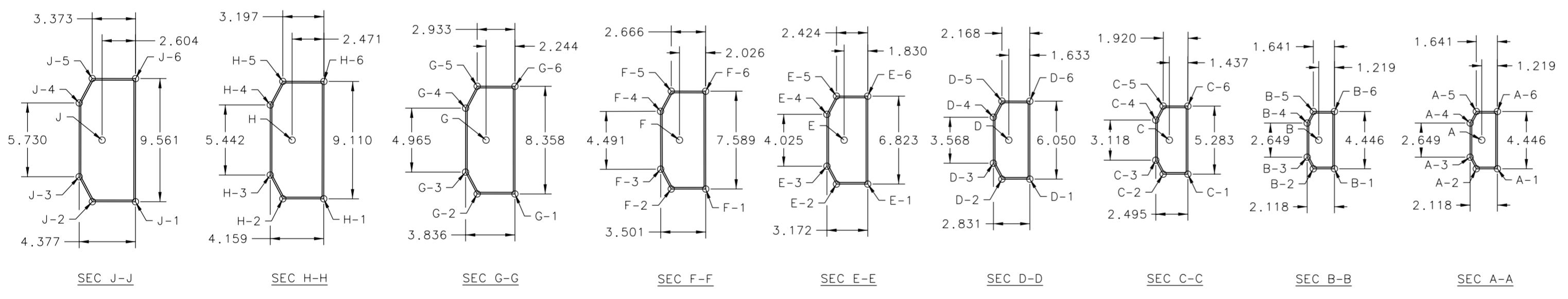
RIGHT VIEW

REFERENCE POINT COORDINATES (ORIGIN AT REF PT A-1)

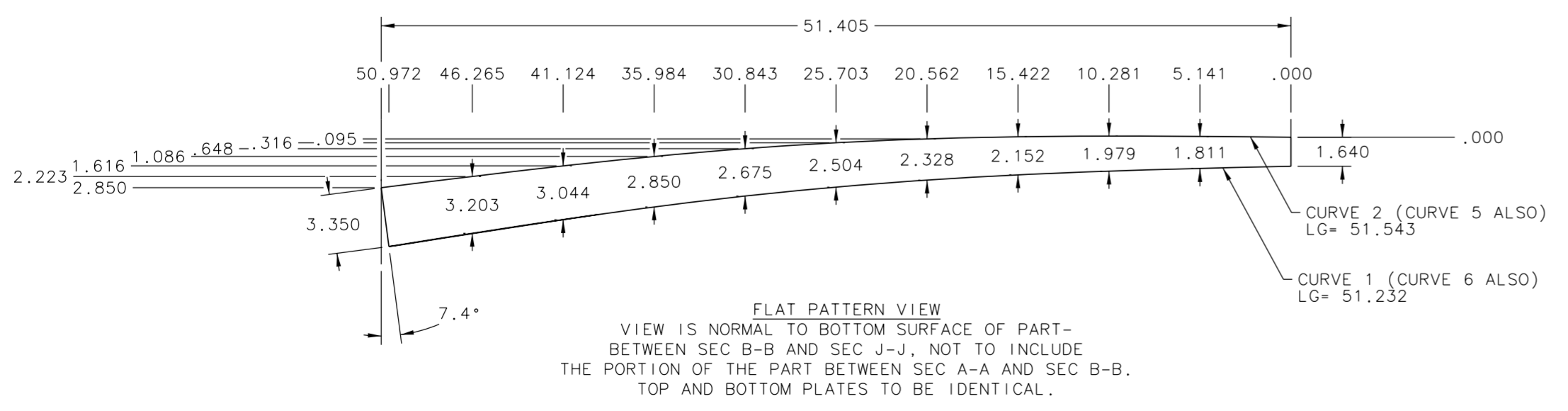
REF PT	X	Y	Z
A	1.218	2.224	0.000
A-1	0.000	0.000	0.000
A-2	1.640	0.000	0.000
A-3	2.119	0.899	0.000
A-4	2.119	3.548	0.000
A-5	1.641	4.449	0.000
A-6	0.000	4.446	0.000
B	1.218	2.224	1.500
B-1	0.000	0.000	1.500
B-2	1.640	0.000	1.500
B-3	2.119	0.899	1.500
B-4	2.119	3.548	1.500
B-5	1.641	4.449	1.500
B-6	0.000	4.446	1.500
C	1.218	2.224	9.893
C-1	-0.221	-0.418	9.893
C-2	1.698	-0.421	9.893
C-3	2.276	0.664	9.893
C-4	2.279	3.782	9.892
C-5	1.702	4.892	9.892
C-6	-0.218	4.865	9.892
D	1.121	2.224	17.549
D-1	-0.515	-0.801	17.508
D-2	1.657	-0.806	17.563
D-3	2.317	0.431	17.579
D-4	2.324	3.999	17.579
D-5	1.657	5.255	17.562
D-6	-0.511	5.249	17.508
E	0.824	2.224	25.200
E-1	-1.008	-1.186	25.103
E-2	1.420	-1.189	25.232
E-3	2.160	0.200	25.271
E-4	2.163	4.225	25.271
E-5	1.418	5.640	25.232
E-6	-1.003	5.637	25.103
F	0.307	2.224	32.840
F-1	-1.724	-1.570	32.671
F-2	0.946	-1.572	32.893
F-3	1.765	-0.031	32.961
F-4	1.778	4.460	32.962
F-5	0.945	6.025	32.893
F-6	-1.711	6.019	32.672
G	-0.441	2.224	40.460
G-1	-2.673	-1.956	40.213
G-2	0.243	-1.954	40.536
G-3	1.140	-0.260	40.636
G-4	1.133	4.704	40.635
G-5	0.245	6.407	40.536
G-6	-2.671	6.402	40.213
H	-1.354	2.224	48.063
H-1	-3.793	-2.331	47.747
H-2	-0.639	-2.330	48.155
H-3	0.331	-0.488	48.281
H-4	0.330	4.955	48.281
H-5	-0.634	6.784	48.156
H-6	-3.804	6.779	47.746
J	-1.959	2.224	52.740
J-1	-4.533	-2.557	52.407
J-2	-1.211	-2.555	52.841
J-3	-0.192	-0.620	52.969
J-4	-0.194	5.110	52.968
J-5	-1.196	7.008	52.839
J-6	-4.541	7.004	52.406

LENGTHS OF CURVES FROM SEC B-B TO SEC J-J (PORTION OF PART THAT EXTENDS FROM SEC A-A TO SEC B-B IS A STRAIGHT EXTRUSION WITH A LENGTH= 1.500):

CURVE 1:	51.232
CURVE 2:	51.543
CURVE 3:	51.610
CURVE 4:	51.610
CURVE 5:	51.543
CURVE 6:	51.232



NOTE:
ALL REF PTS AND DIMENSIONS ARE GIVEN TO OUTSIDE EDGES OF PART, WITH MATERIAL THICKNESS OF .125" THROWN TO THE INTERIOR.



FLAT PATTERN VIEW
VIEW IS NORMAL TO BOTTOM SURFACE OF PART - BETWEEN SEC B-B AND SEC J-J, NOT TO INCLUDE THE PORTION OF THE PART BETWEEN SEC A-A AND SEC B-B. TOP AND BOTTOM PLATES TO BE IDENTICAL.

NOTE:
FINAL MEANS OF FABRICATION IS THE DECISION OF THE VENDOR, HOWEVER, WHETHER THE PART IS CREATED VIA BENDING OR WELDING OF INDIVIDUAL PLATES, THE PART MUST MEET A VACUUM LEAK CHECK RATE OF 1×10^{-6} ATM CC/SEC OR BETTER. ALL WELDS SHALL BE MADE IN ACCORDANCE WITH ANSII/AWS D1.1 BY QUALIFIED WELDERS. VENDOR SHOULD SEEK GUIDANCE REGARDING WELD PREP FROM DESIGN STAFF IF THEY CHOOSE TO WELD THE PART.

DOCUMENT CONTROL STAMP		EACH SHEET OF MULTI-SHEET DRAWINGS SHALL ALWAYS HAVE THE SAME REVISION LEVEL.	
MATERIAL: 304 SS	THIRD ANGLE PROJECTION	APPROVALS: [Signature]	DATE: 12-03-2008
IF FINISH MATCHES SURFACES UNLESS OTHERWISE NOTED SURFACE & BREAK ALL SHARP EDGES. DO NOT SCALE DRAWING.	UNLESS OTHERWISE SPECIFIED DIMENSIONS ARE IN INCHES. DECIMAL ANGLES $\pm .50^\circ$ UNLESS OTHERWISE NOTED.	APPROVED: [Signature]	DATE: [Blank]
Jefferson Lab Thomas Jefferson National Accelerator Facility		HALL A - PREX SEPTUM MAGNET TARGET TO HRSBR VACUUM TUNNEL	
SIZE DWG. NO. E		SIZE: XXXXX-XXXXX	
SHEET 1 OF 1		SHEET 1 OF 1	