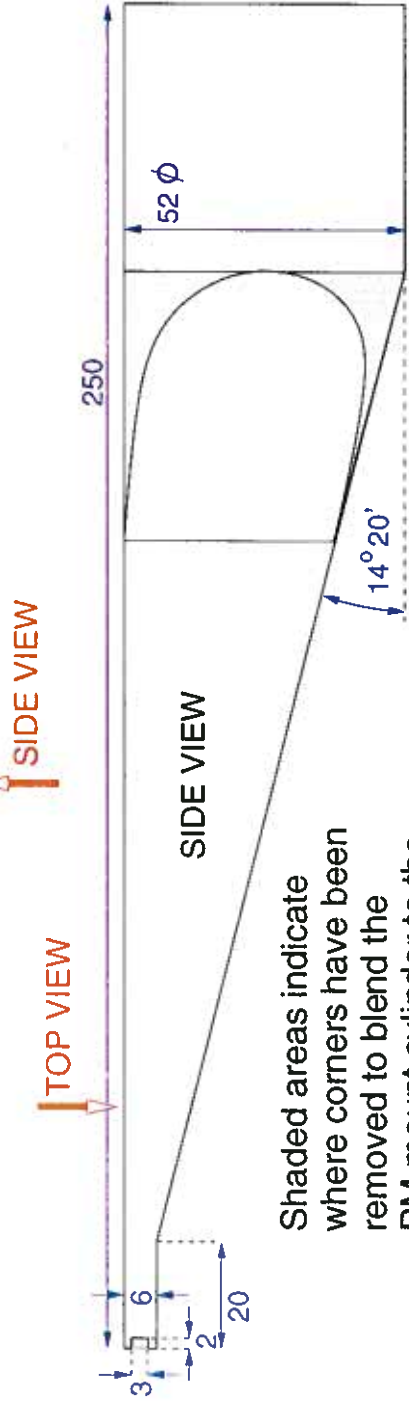
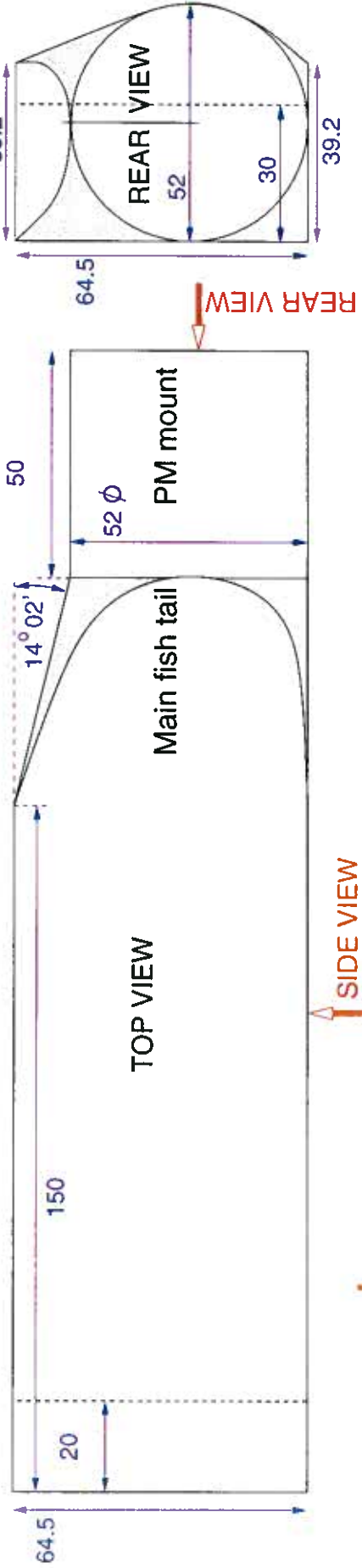


# "FISH-TAIL" LIGHT GUIDES FOR BIGBITE FOCAL-PLANE SCINTILLATORS

Light guide to adapt 64.5 x 3 mm to 52 mm diameter



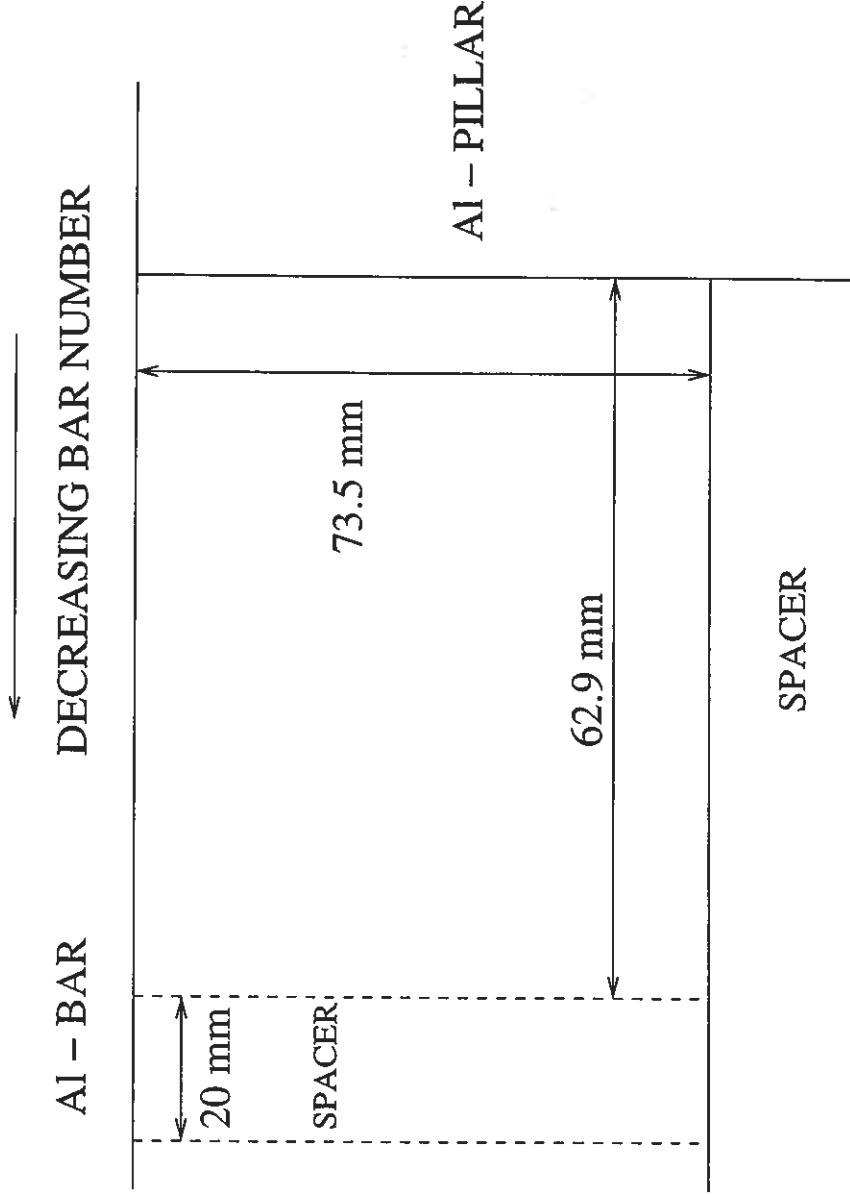
Shaded areas indicate where corners have been removed to blend the PM mount cylinder to the wedge of the main fish tail.

J.R.M. Annand  
 University of Glasgow  
 25th January 2001  
 Material: UV transmitting acrylic  
 Dimensions: mm  
 Machine from solid & polish



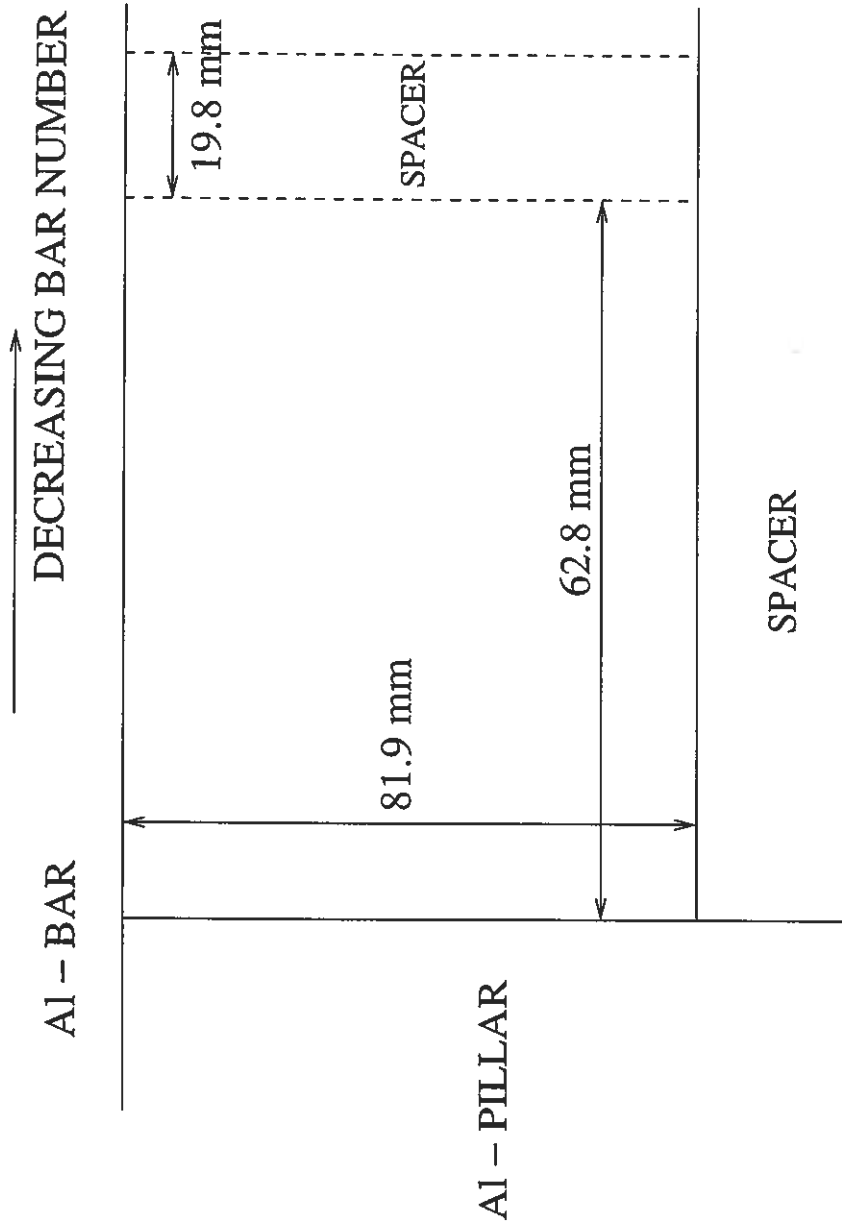
BOTTOM RIGHT SIDE  
NOT TO SCALE

DOES NOT INCLUDE THE SPACER ON THE UPPER BAR



VIEW OF 'RIGHT' SIDE OF THE SPACE

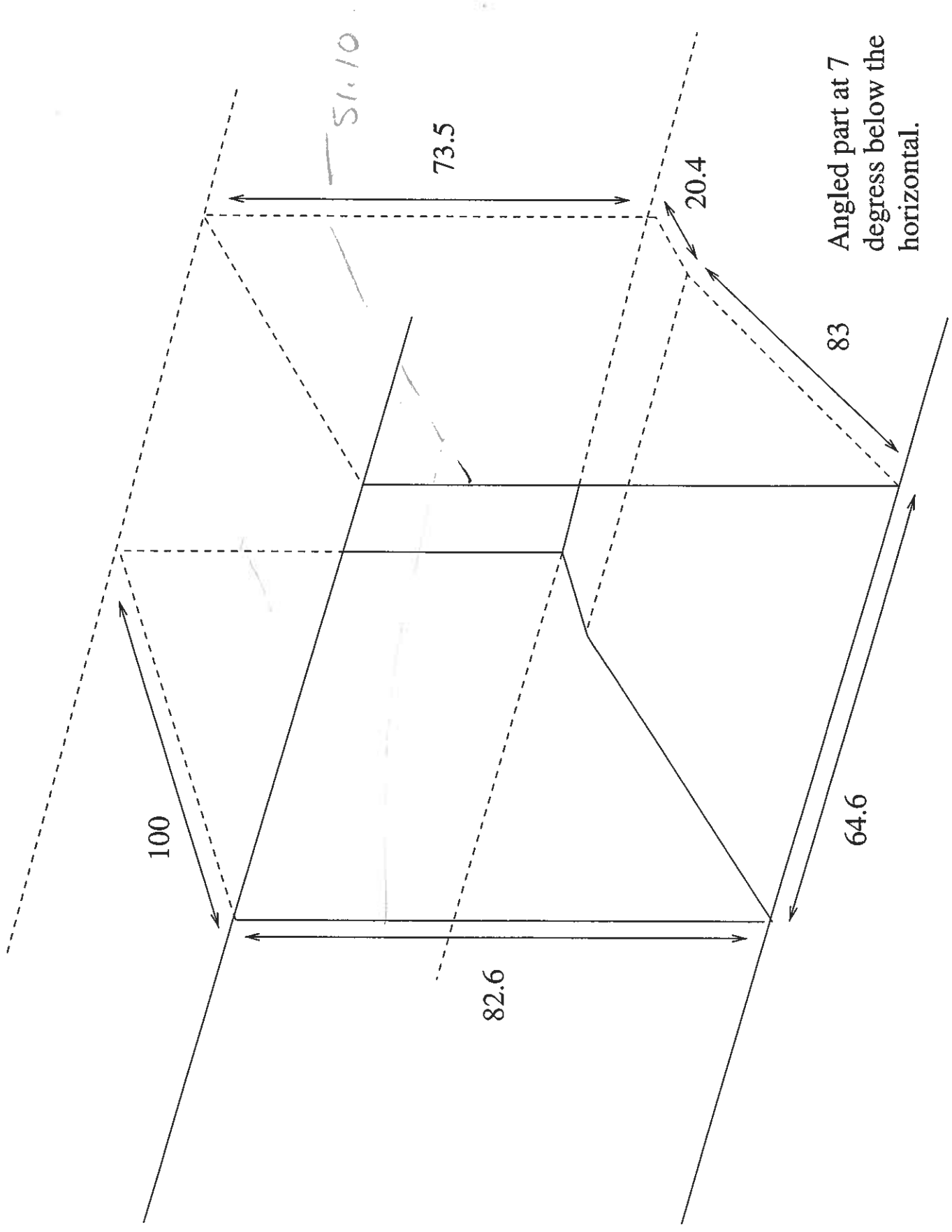
BOTTOM RIGHT SIDE  
NOT TO SCALE  
DOES NOT INCLUDE THE SPACER ON THE UPPER BAR



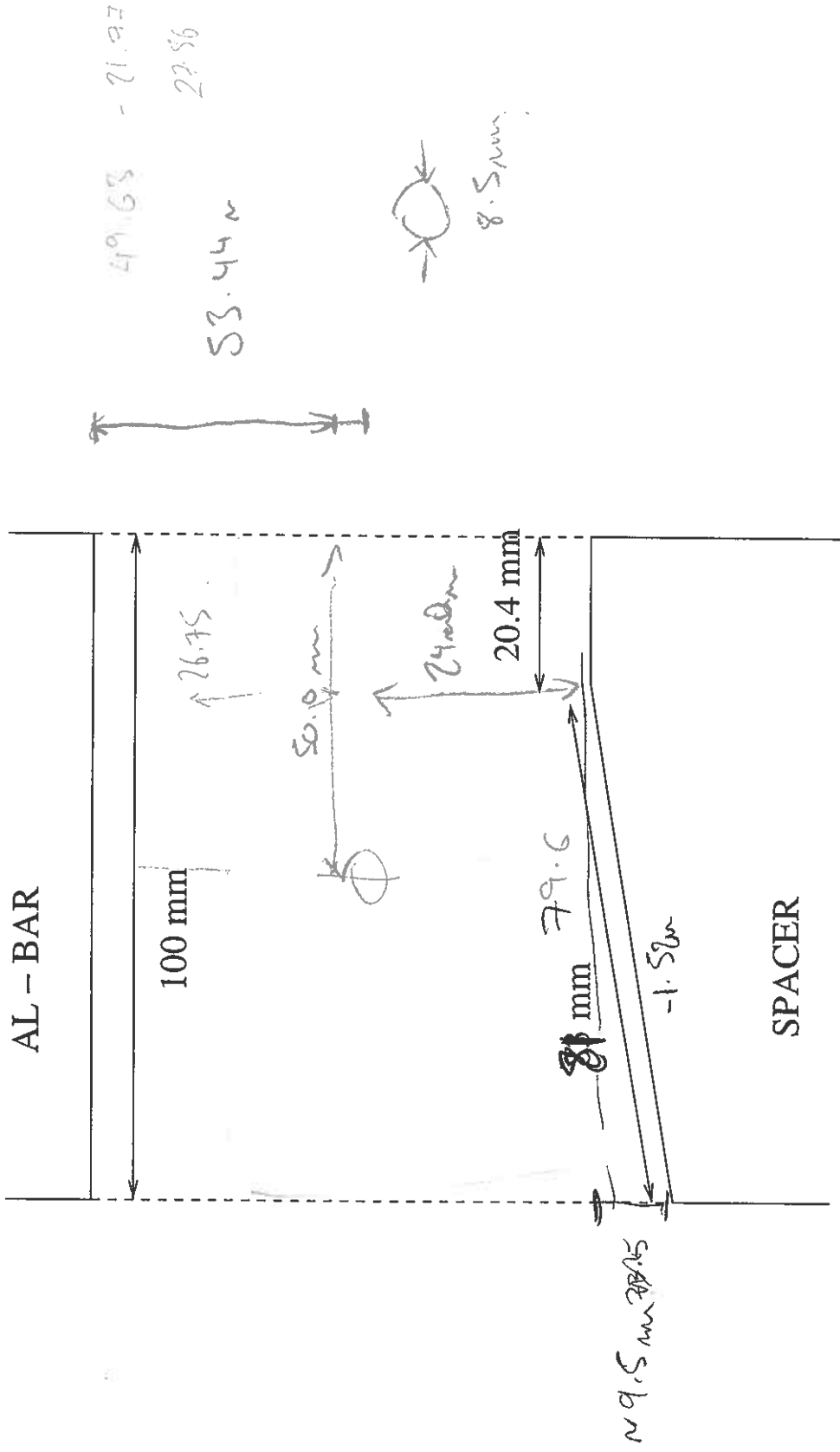
VIEW OF 'RIGHT' SIDE OF THE SPACE

# LEFT - HAND SUPPORT BAR: THREE DIMENSIONAL VIEW OF GAP

Lengths are in mm; dotted lines denote parts obscured from view at this angle.

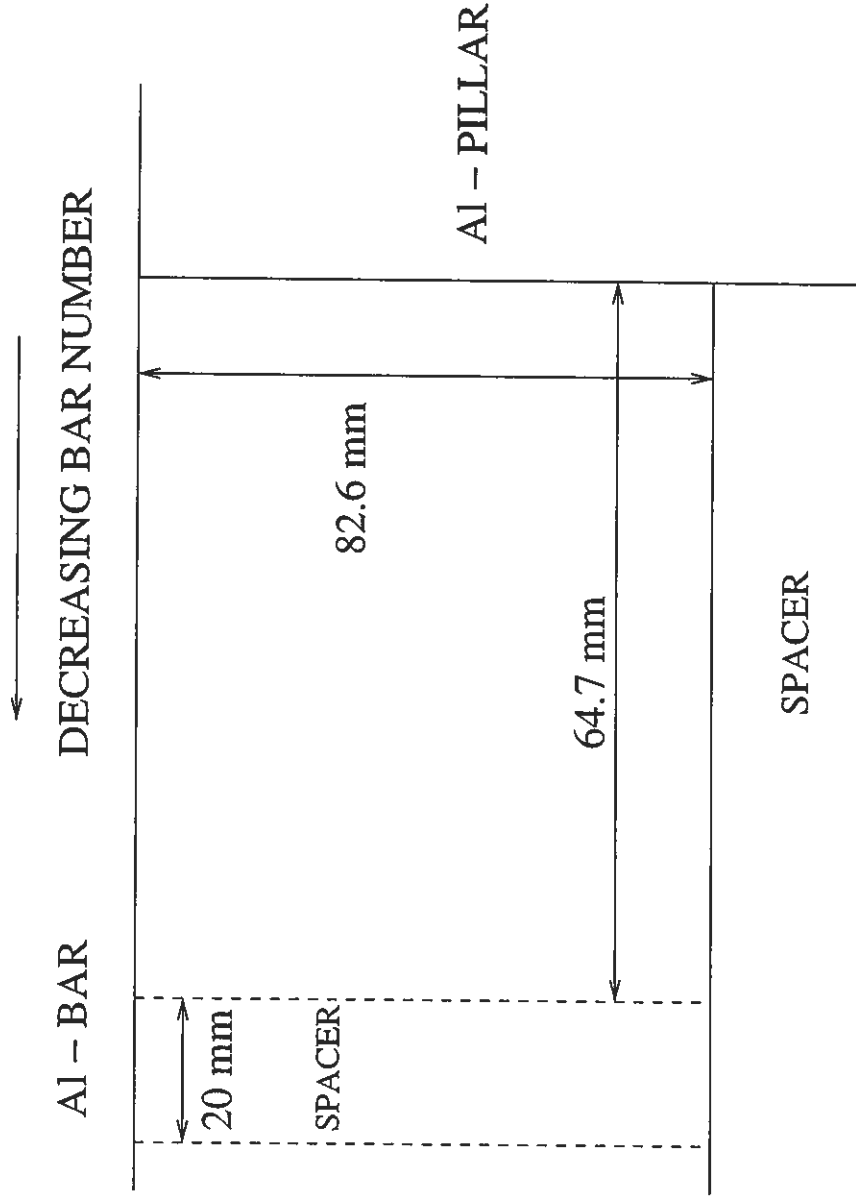


LEFT -SIDE; VIEW FROM THE BOTTOM LOOKING TO THE TOP  
 ALONG THE LENGTH OF THE SUPPORT BAR.



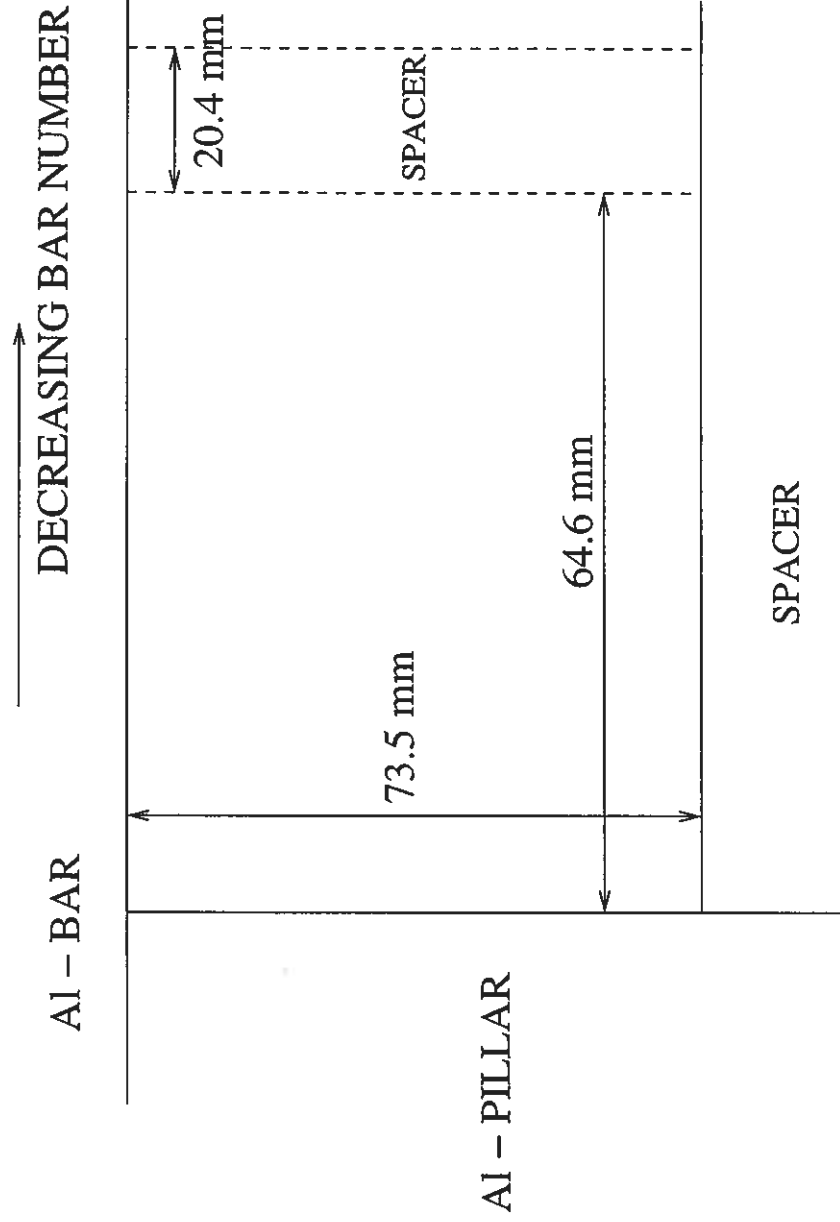
DOES NOT INCLUDE SPACER ON THE UPPER BAR

BOTTOM LEFT SIDE  
NOT TO SCALE  
DOES NOT INCLUDE THE SPACER ON THE UPPER BAR



VIEW OF 'LEFT' SIDE OF THE SPACE

BOTTOM LEFT SIDE  
NOT TO SCALE  
DOES NOT INCLUDE THE SPACER ON THE UPPER BAR

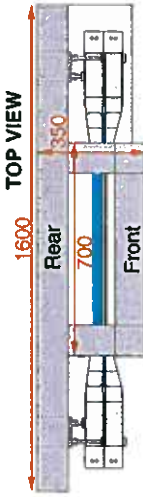


VIEW OF 'RIGHT' SIDE OF THE SPACE

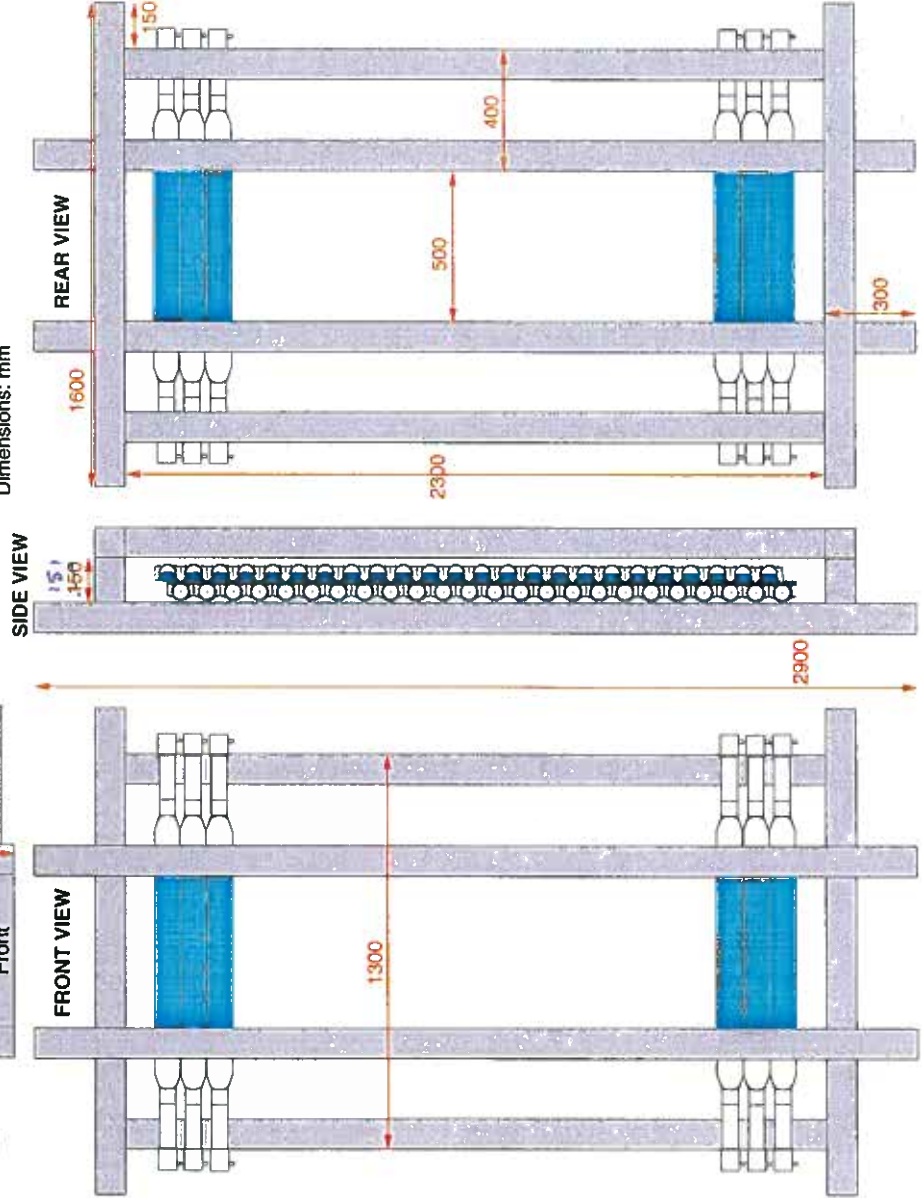




# BigBite Trigger Sub-Frame



J.R.M. Annand  
10th January 2002  
Material: Kanya MA1-5 100x100 mm  
Extruded Al  
Dimensions: mm



**PRELIMINARY**

**Bigbite  
Placing of Focal-plane Detector**

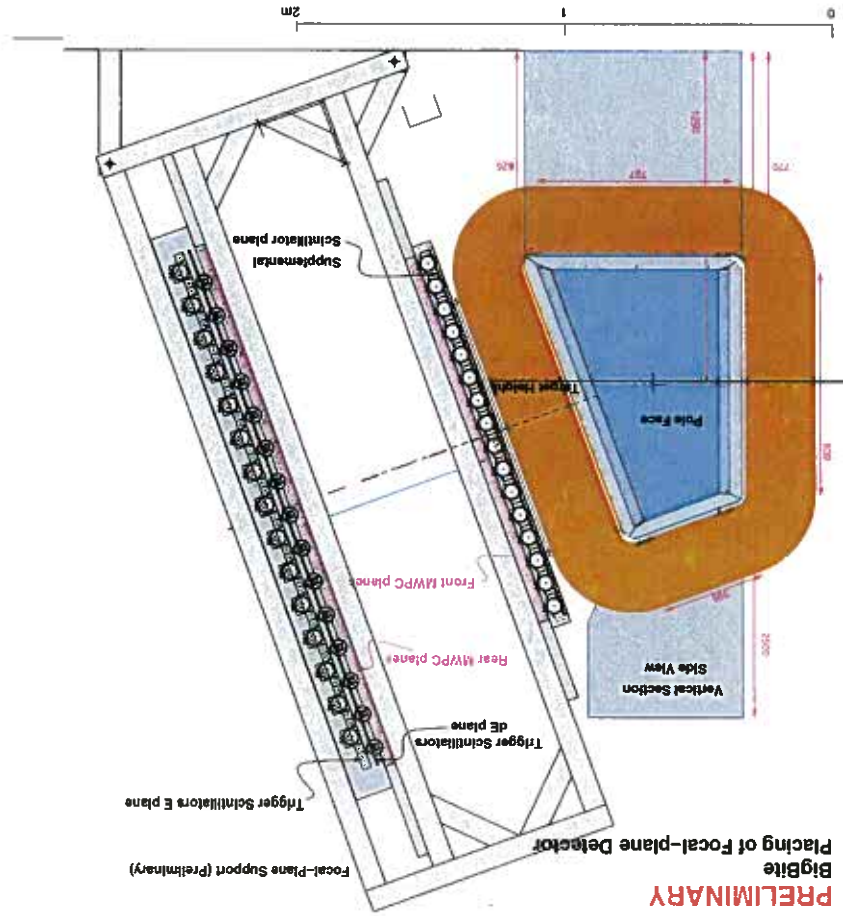
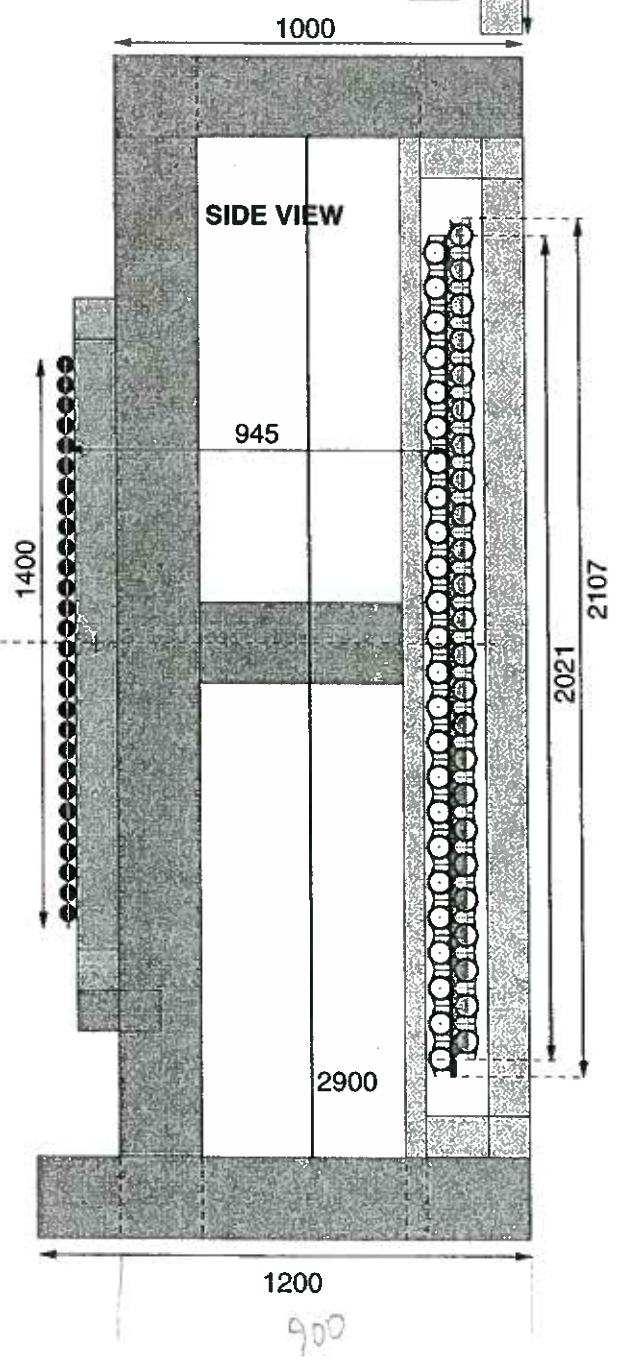
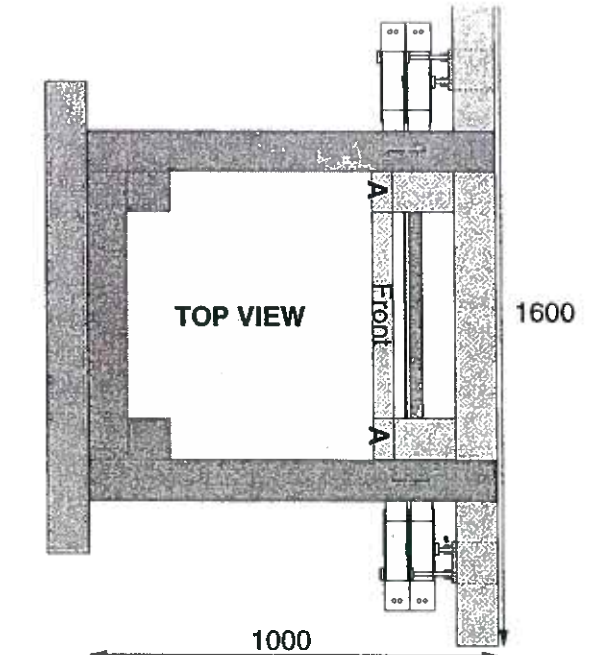
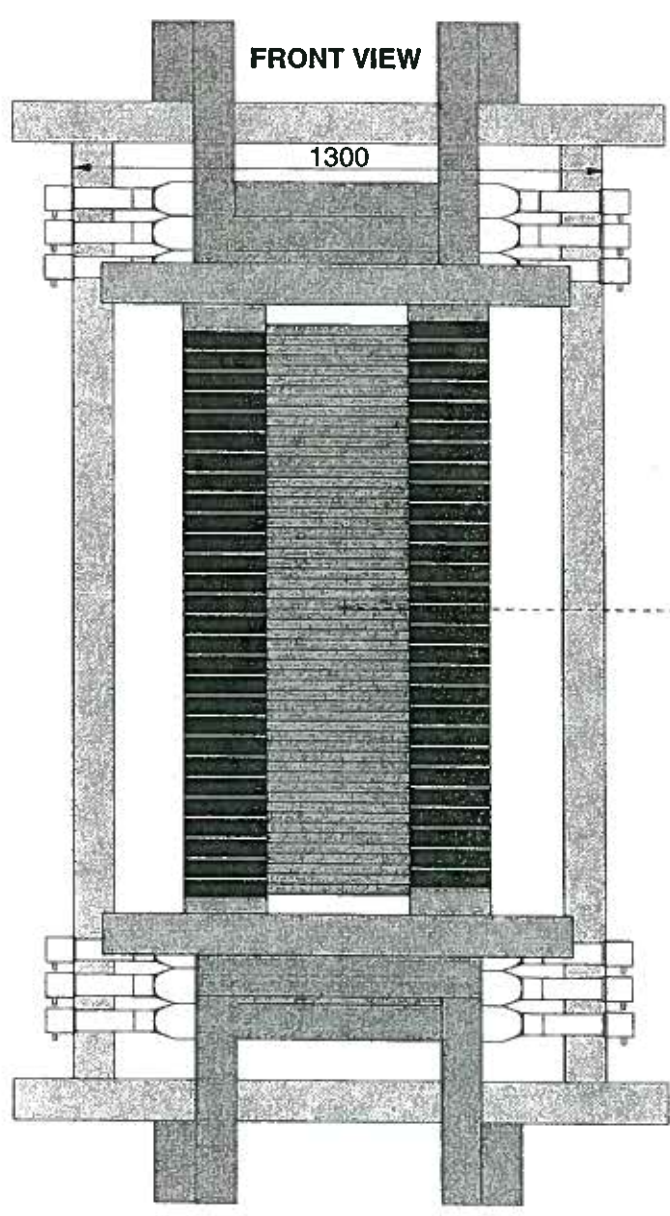


Figure 2: Side view of the Bigbite magnet and focal-plane detector. The focal-plane support structure is a preliminary guess, but a quantitative design is in progress.

# BIGBITE FRAME (PRELIMINARY)

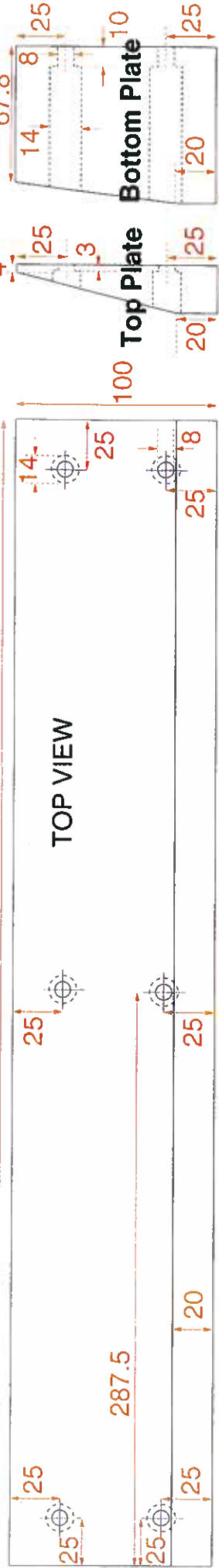
J.R.M. Annand  
15th January 2002





# Spacer Plates for BigBite Trigger Mounting

Top & Bottom Spacer Plate



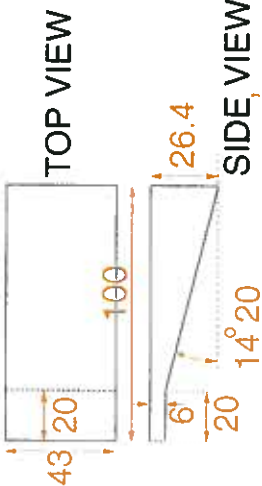
J.R.M. Annand

10th January 2002

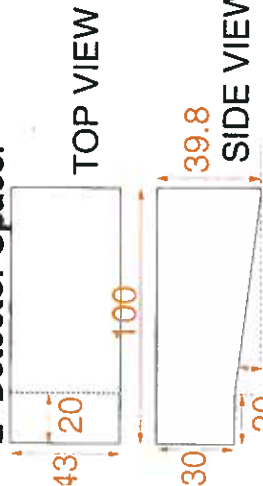
Dimensions in mm

- 8 off Top Spacer, material perspex
- 8 off Middle Spacer, 526x100x8 mm plain perspex sheet
- 8 off Bottom Spacer, material perspex
- 2 off DE-Detector Spacer, material perspex
- 2 off E-Detector Spacer, material perspex
- 2 off End Spacer (right), material perspex
- 2 off End Spacer (left), material perspex

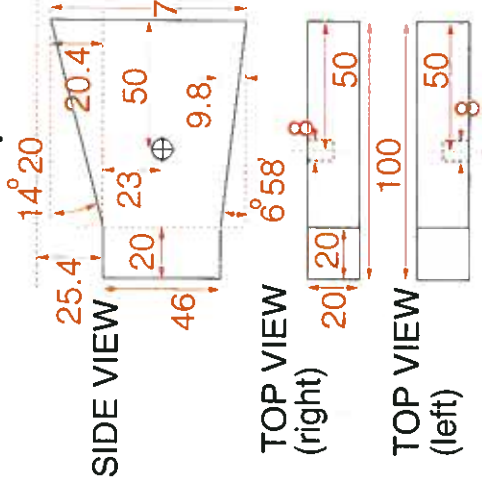
DE-Detector Spacer



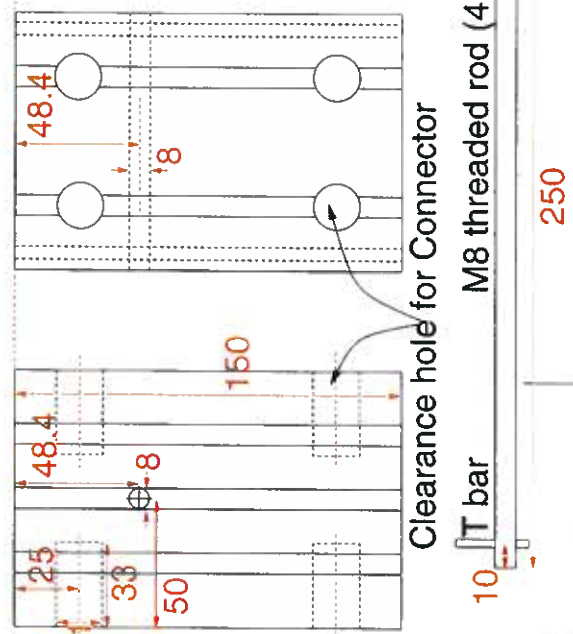
E-Detector Spacer



End Spacer



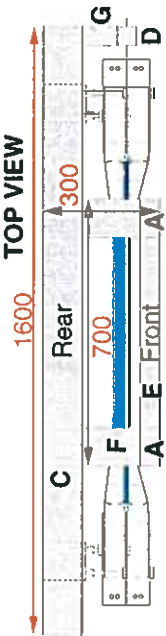
MA1-5 (main frame)



M8 threaded rod (4 off)



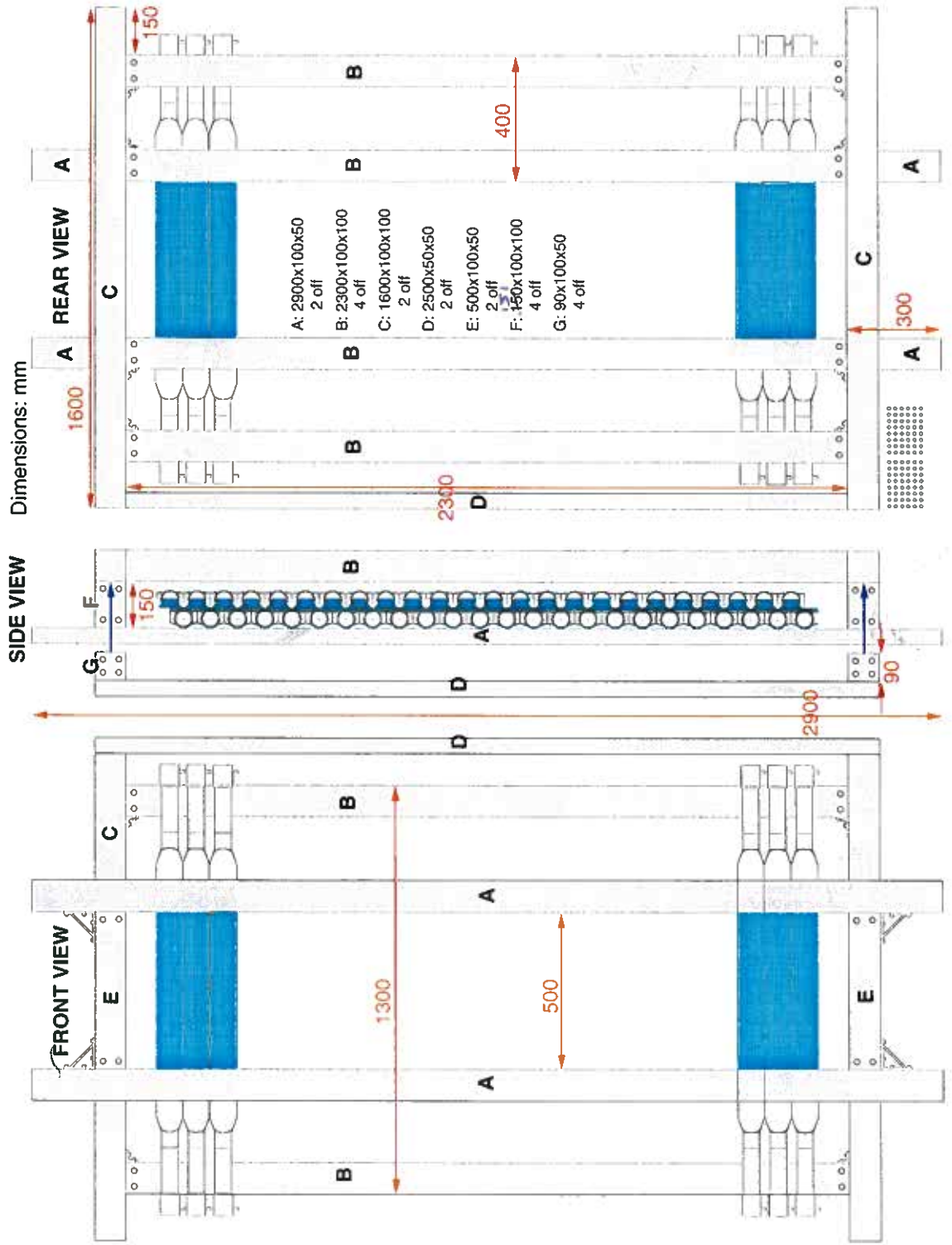
# BigBite Trigger Sub-Frame



J.R.M. Annand

10th January 2002

Material: Kanya MA1-5 100x100 mm Extruded Al  
MA1-2 100x50 mm (A)



# BigByte

Focal-plane layout  
along dispersive plane  
JRM Annand 18th Oct 2000

