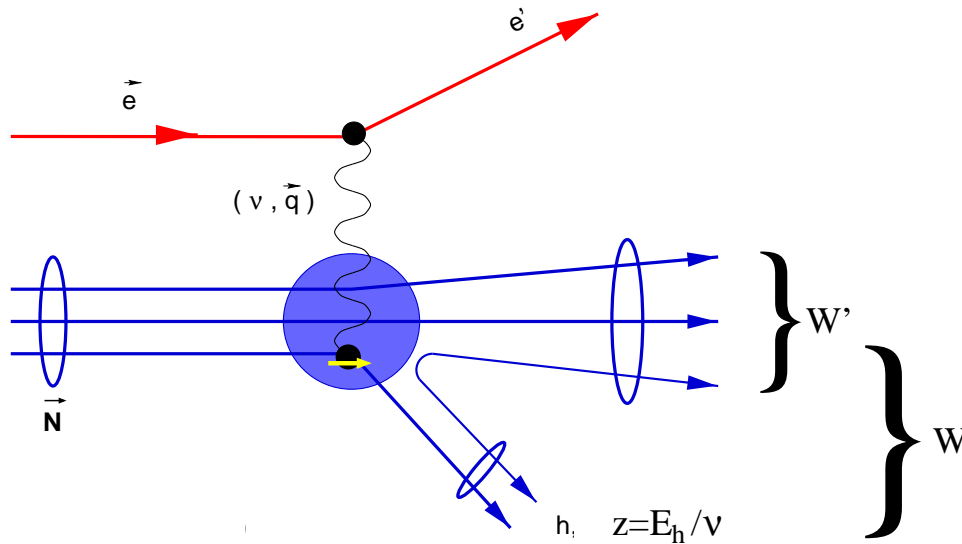


Semi-exclusive Spin Asymmetries on the Nucleon Experiment

Spokespersons: P. Bosted, D. Day, X. Jiang and M. Jones



Measure spin asymmetries in

$$(\vec{e}, e'h)X h = \pi^\pm, K^\pm$$

on a polarized proton and deuteron target in a parallel magnetic field.

- *BETA* detects e' at 32°
- *HMS* detects coincident π^\pm, K^\pm at a central momentum of $2.7 \text{ GeV}/c$ and 11°

New for Semi-SANE

- Need LiD and ND₃ in addition to NH₃ target
- Move *BETA* to 32° (only running with parallel target field).
- Replace helium beam pipe with regular small angle beam pipe.
- *Time to complete 1 week.*

