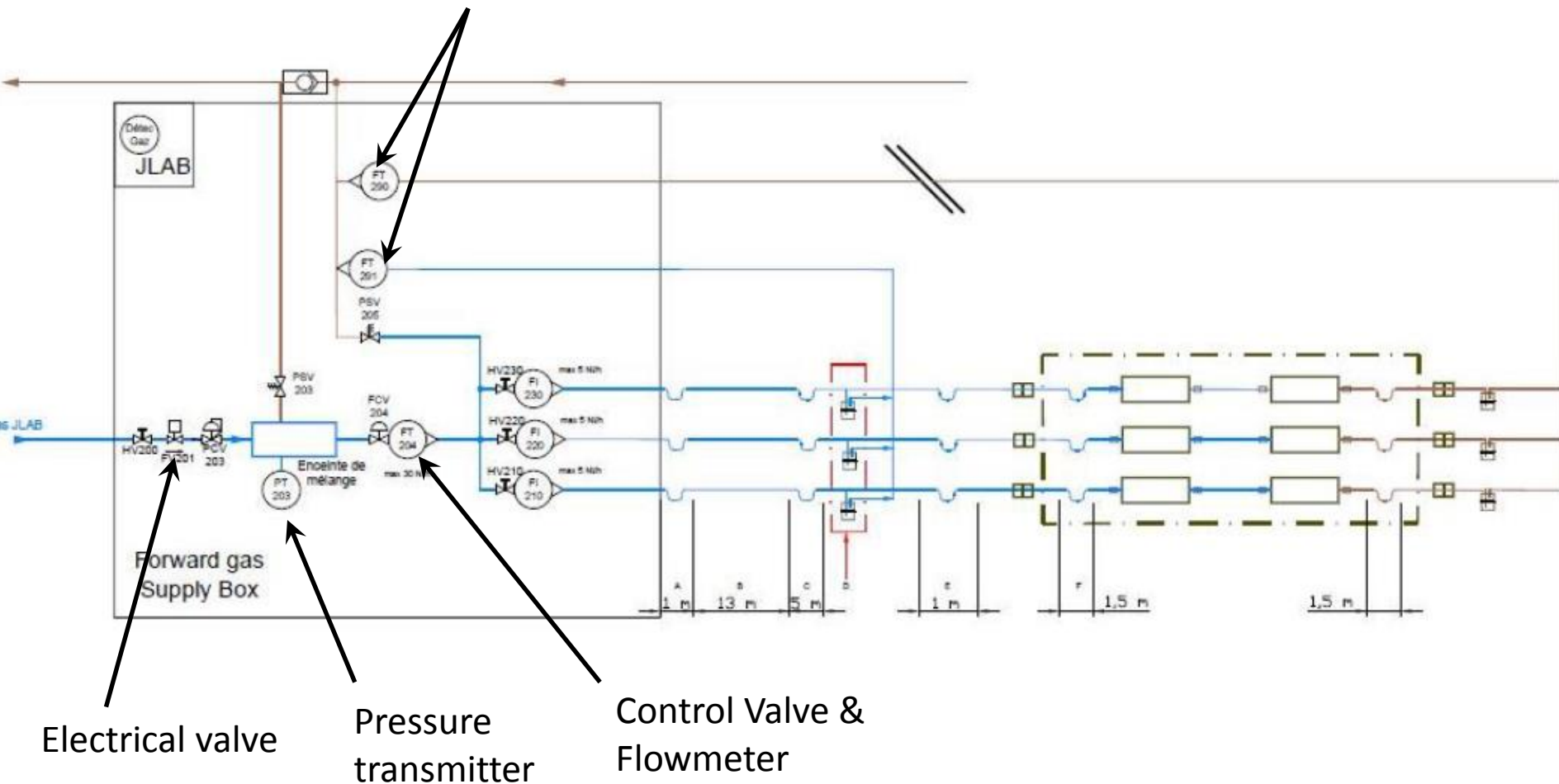


- **Gas instrumentation**
- **Control architecture**
- **Interface with Jlab**
- **Communication details**

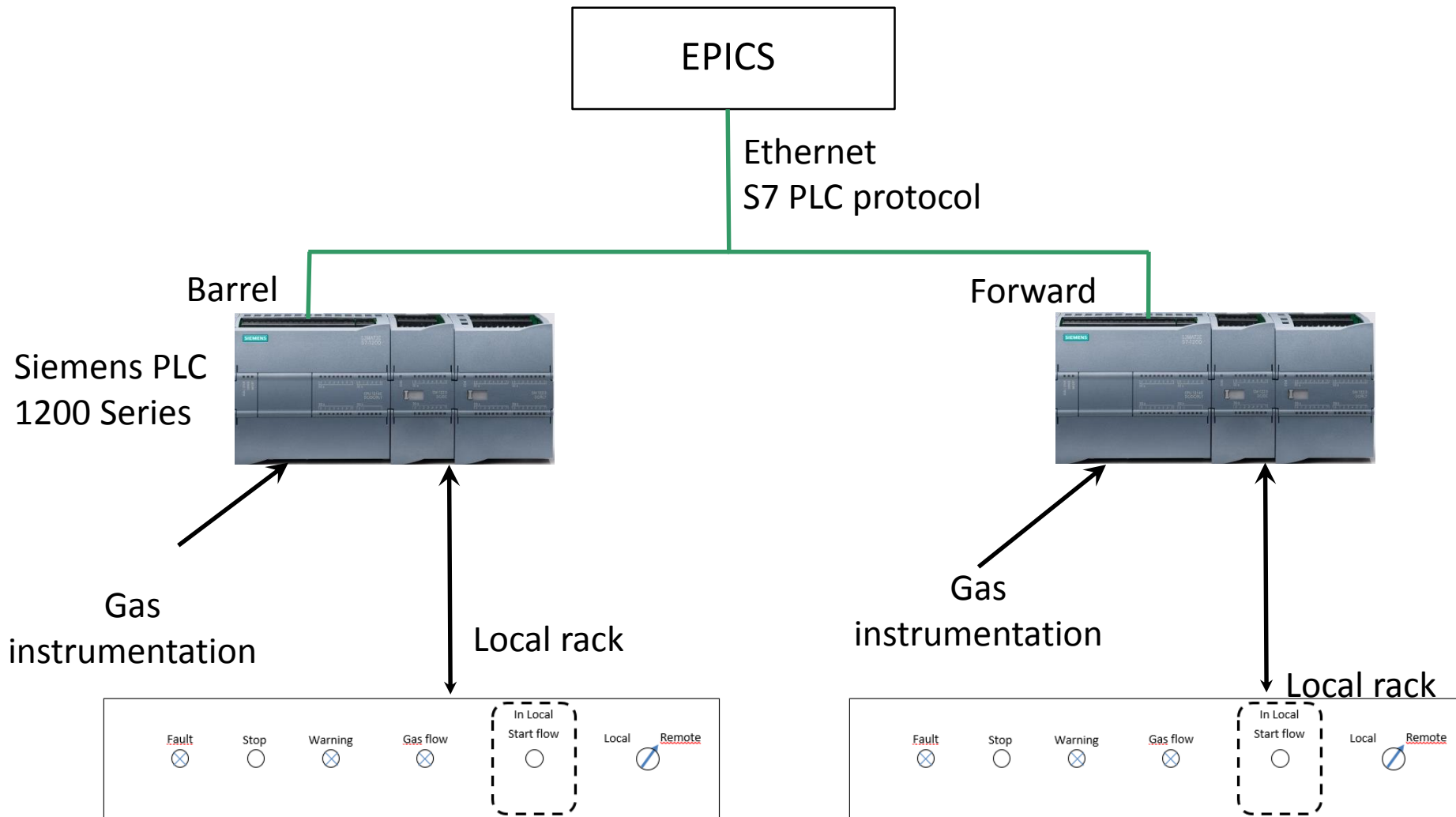
## Flowmeters



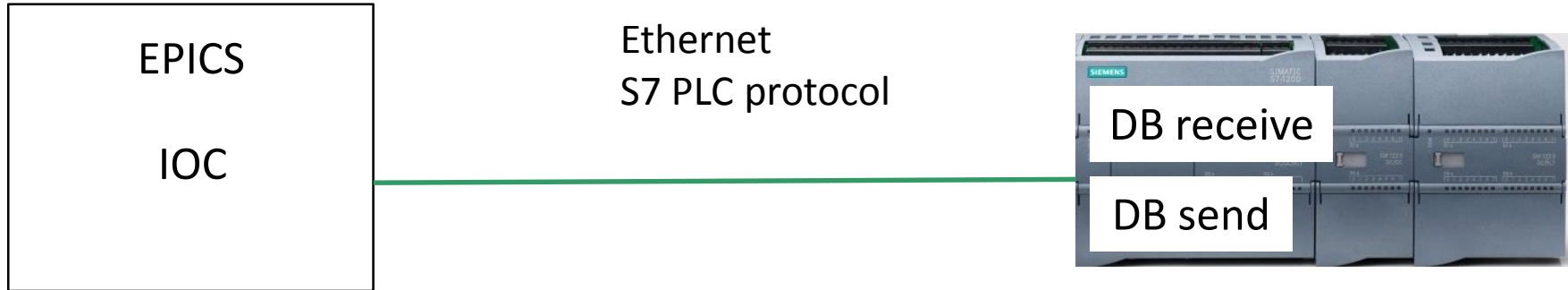
Electrical valve

Pressure transmitter

Control Valve & Flowmeter



- **Gas control** : for each sub system (barrel and forward)
  - **Start and stop off each sub system by digital signal**
- **With EPICS** :
  - **Read access**
    - 3 flowmeters values, 1 pressure value and 1 status of control valve
    - 1 valve status,
    - Faults thresholds,
    - Current Timers for fault ,
    - Faults.
    - 1 data block less than 240 bytes
  - **Write access**
    - Faults thresholds,
    - Timers values,
    - 1 data block less than 240 bytes



Size of each DB : 240 bytes