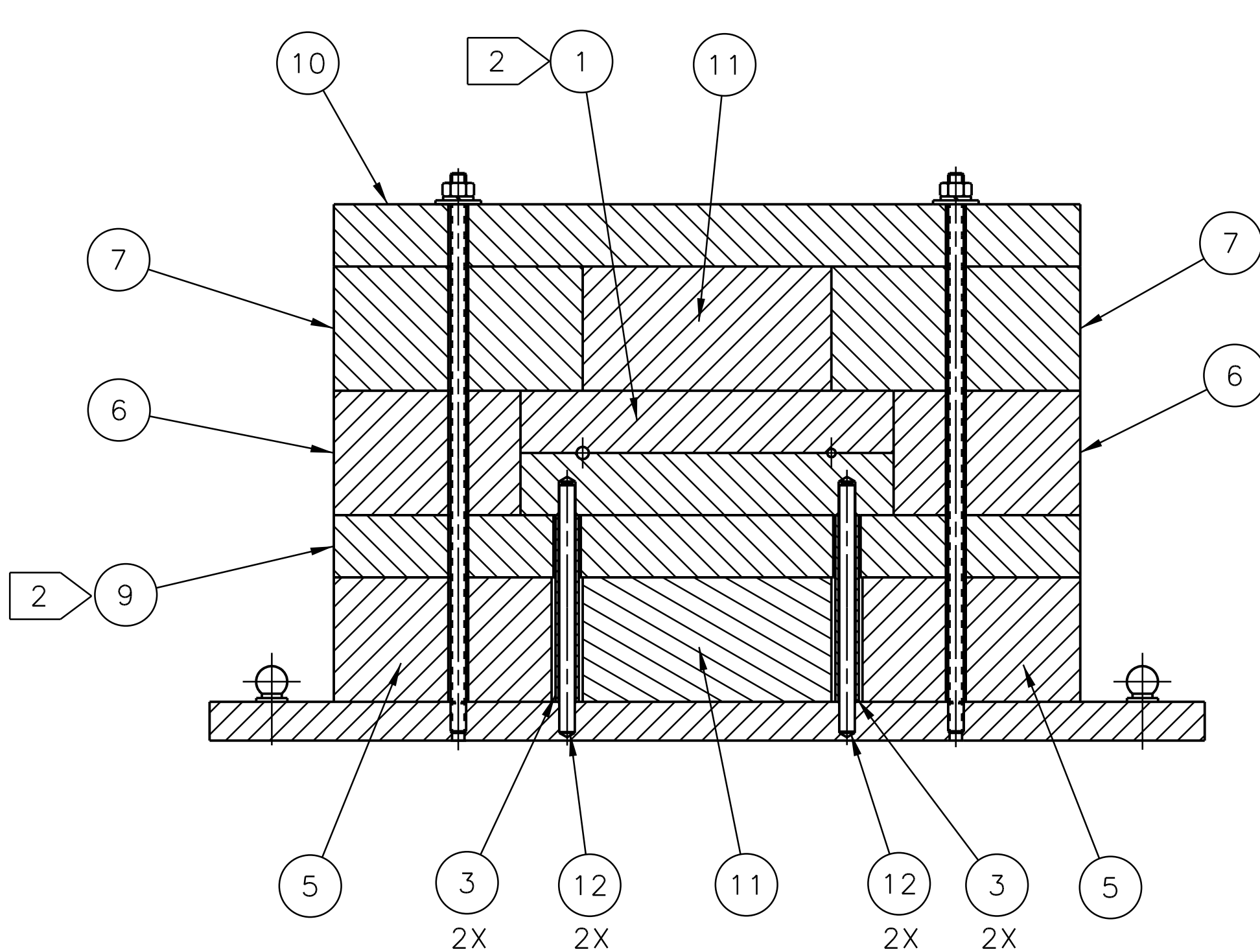
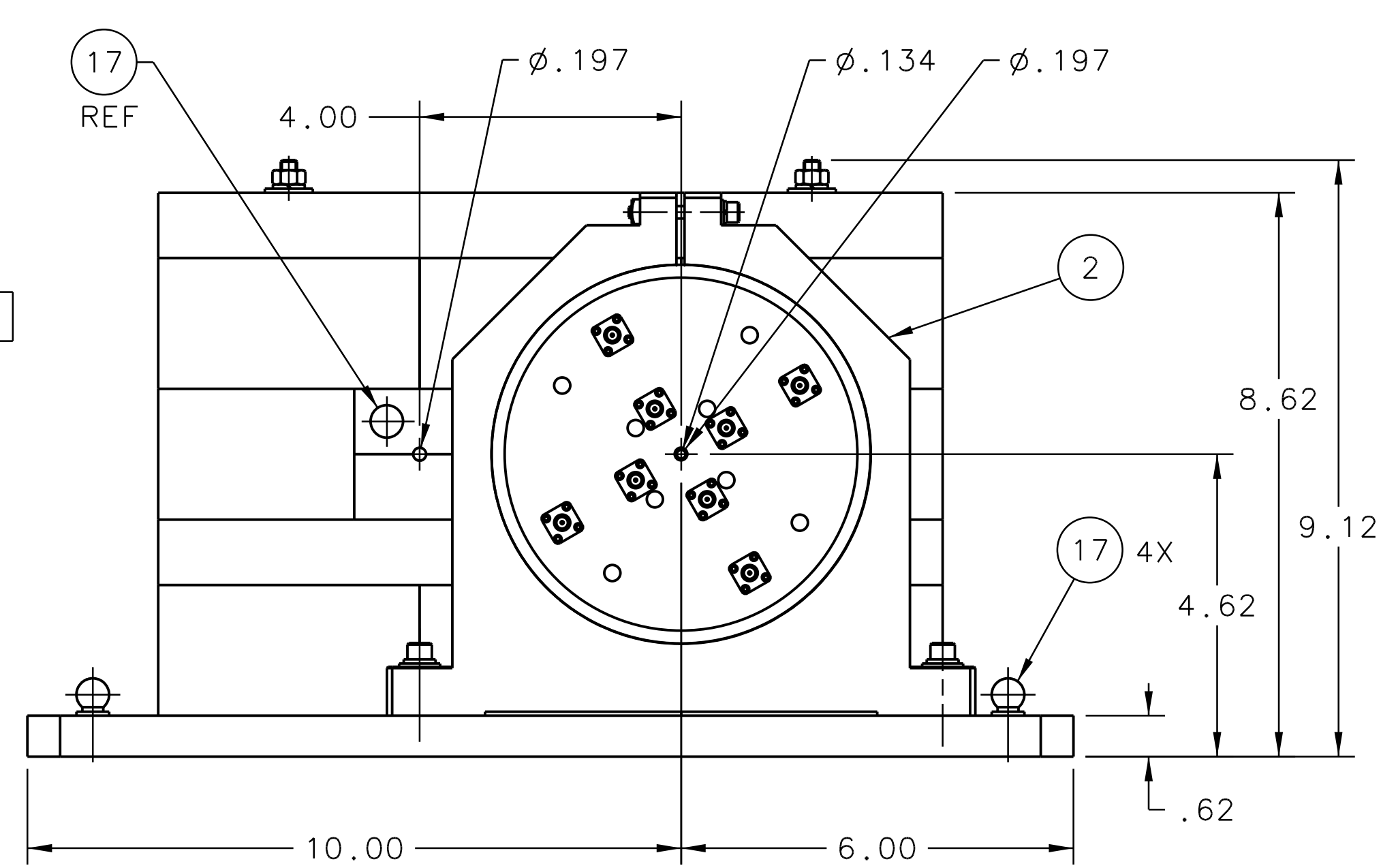
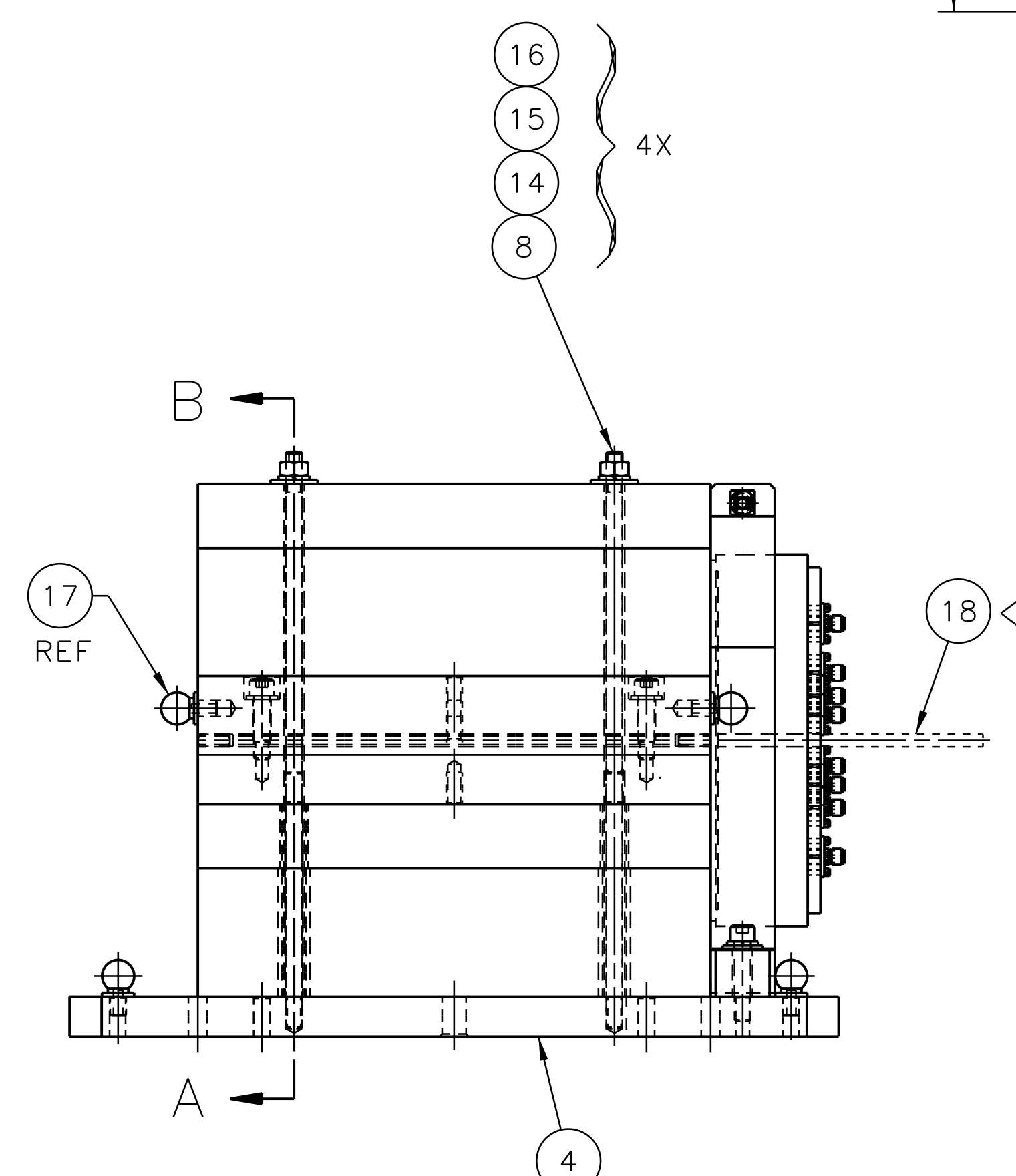


**NOTES:**

1. ALL DIMENSIONS ARE FOR REFERENCE.
2. BLOCK ASSY (ITEM 1) TO REST ON TUBES (ITEM 3). IF THE BUILD UP OF THE LEAD BLOCKS AND PLATE ARE LARGER, LEAD PLATE (ITEM 9) MUST BE TRIMMED.
3. USE ALIGNMENT PIN (ITEM 18) TO ALIGN ACTIVE COLLIMATOR (ITEM 2) TO THE HOLES IN THE BLOCK (ITEM 1). THEN TIGHTEN SCREW HOLDER ASSY.
4. PAINT OUTER SURFACES OF LEAD ITEMS WITH SAFETY BLUE PAINT.
5. STENCIL \*APPROX. ASSY WEIGHT 380 LBS\* AT APPROXIMATE LOCATION SHOWN, IN .50" MIN. CHARACTERS.



SECTION A-A



QTY	ITEM NO.	PART OR IDENTIFYING NO.	DESCRIPTION OR IDENTIFICATION	MATERIAL SPECIFICATION	NOTES
1	18	D00000-02-01-2026	DUAL DIAMETER ALIGNMENT PIN		3
7	17	McMASTER -CARR P/N 8484A13	SHOULDER TOOLING BALL	ALLOY STEEL	
4	16	McMASTER-CARR 91845A029	HEX NUT .250-20	STAINLESS STEEL 18-8	
6	15	McMASTER-CARR 92146A029	SPRING LOCK WASHER-.250	STAINLESS STEEL 18-8	
6	14	McMASTER-CARR 92141A029	FLAT ROUND WASHER-.250	STAINLESS STEEL 18-8	
2	13	McMASTER-CARR P/N 92196A544	SOCKET HEAD CAP SCREW 250-20 UNC X 1.25 LG	STAINLESS STEEL 18-8	
4	12	McMASTER-CARR 6061K412	PRECISION SHAFT .250 OD X 4.0 LG	1566 STEEL	
2	11	McMASTER-CARR P/N 9033K11	BRICK 2 X 4 X 8	LEAD	
1	10	D00000-06-01-2005	1ST COLLIMATOR LEAD PLATE 2		
1	9	D00000-06-01-2004	1ST COLLIMATOR LEAD PLATE 1		
4	8	D00000-06-01-2003	1ST COLLIMATOR SHIELDING STUD		
2	7	D00000-06-01-2002	1ST COLLIMATOR LEAD BRICK 3		
2	6	D00000-06-01-2001	1ST COLLIMATOR LEAD BRICK 2		
2	5	D00000-06-01-2000	1ST COLLIMATOR LEAD BRICK 1		
1	4	D00000-02-01-2066	1ST COLLIMATOR BASE PLATE		
4	3	D00000-02-01-2011	1ST COLLIMATOR SUPPORT TUBE		
1	2	D00000-02-01-1018	HOLDER ASSY-COLLIMATOR		
1	1	D00000-02-01-1017	1ST COLLIMATOR BLOCK ASSY		

UNITED STATES DEPARTMENT OF ENERGY  
**Jefferson Lab**  
 Thomas Jefferson National Accelerator Facility  
 Newport News, Virginia

HALL D GLUE-X BEAMLINE  
 COLLIMATOR ALCOVE  
 1ST COLLIMATOR ASSY

SCALE: 1:2  
 SHEET 1 OF 1

DATE: 22NOV10  
 DRAWN: R. GEIZ  
 CHECKED: VOR  
 APPROVED: VOR  
 APPROVED: T. WHITLATCH

FINISH: MACHINED SURFACES UNLESS OTHERWISE NOTED. DEBURR & BREAK ALL SHARP EDGES.  
 DO NOT SCALE DRAWING